



RI Office of Management and Budget Performance Report

RI Department of Children, Youth and Families

July 30, 2013

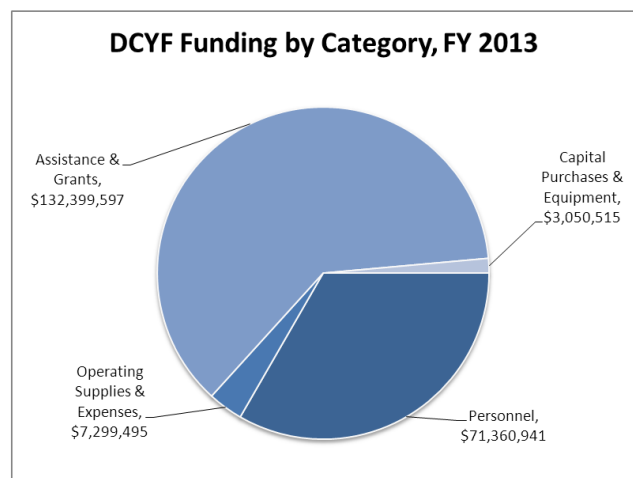
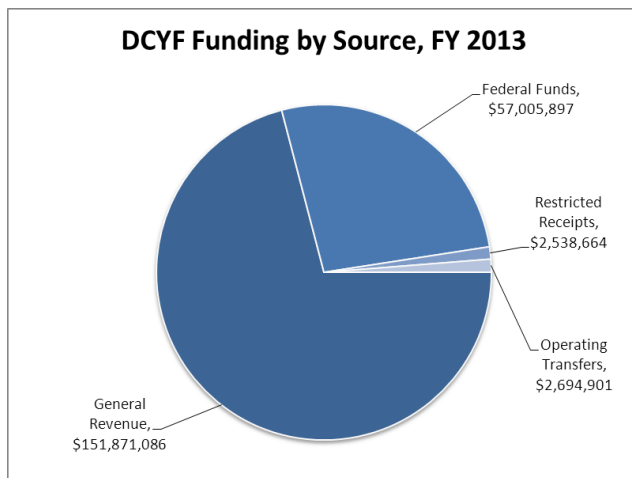
The Rhode Island Department of Children, Youth and Families (DCYF) works with families and community organizations to ensure the safety, permanency and well-being of all children and youth in Rhode Island. Through an integrated System of Care, DCYF provides children, youth and their families with necessary resources to develop the skills and behaviors to maintain safe and healthy families, achieve permanency, and successfully transition to adulthood. In Fiscal Year 2013, DCYF had 671.5 full-time equivalent (FTE) positions distributed among five main units: Central Management; Child Welfare, Community Services / Behavioral Health, Rhode Island Training School, and Juvenile Probation.

Children, Youth and Families Budget – Fiscal Year 2013

The majority of funding for DCYF in FY 2013 came from general revenue (70.9 percent), with federal funds representing 26.6 percent, and restricted receipts and operating transfers accounting for 2.4 percent. DCYF’s largest category of expenditure is assistance and grants (61.8 percent) followed by personnel (33.3 percent), operating supplies (3.4 percent) and capital purchases (1.4 percent). The tables below illustrate the sources of funding for DCYF and how funds were budgeted in FY 2013.¹

General Revenue	\$	151,871,086	70.9%
Federal Funds	\$	57,005,897	26.6%
Restricted Receipts	\$	2,538,664	1.2%
Operating Transfers	\$	2,694,901	1.3%
Total	\$	214,110,548	100.0%

Personnel	\$	71,360,941	33.3%
Operating Supplies & Expenses	\$	7,299,495	3.4%
Assistance & Grants	\$	132,399,597	61.8%
Capital Purchases & Equipment	\$	3,050,515	1.4%
Total	\$	214,110,548	100.0%

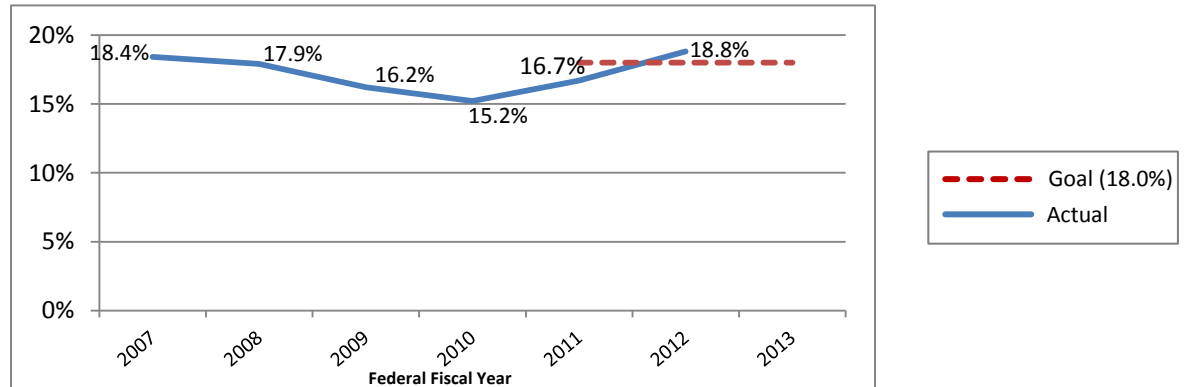


¹ Figures for DCYF’s funding sources and budget categories are based on the FY 2013 revised budget, as signed into law by Governor Lincoln D. Chafee on July 3, 2013 (2013 R.I. Pub. Laws, Ch. 144).

FOSTER CARE RE-ENTRIES

DCYF seeks to reduce the number of re-entries into the foster care system after a child receives a permanent home placement. Reducing foster care re-entry allows the state to provide less costly services in a child's home and community and to provide better outcomes for children.

Figure A: Percent of Children Re-Entering Foster Care within 12 Months of Family Reunification



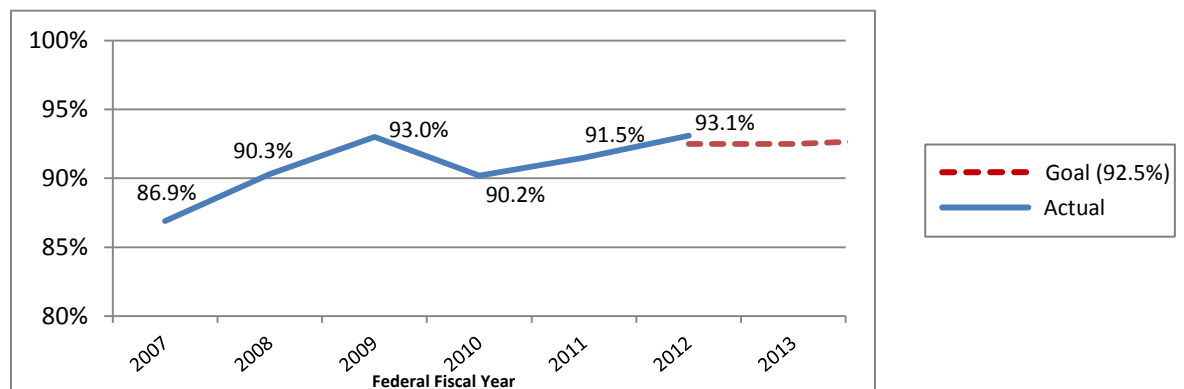
Key Points:

- DCYF influences this outcome by providing services to children as they make the transition from foster care into a permanent home. DCYF partners with the Family Care Community Partnership (FCCP), which offers a variety of targeted programs to children and their families based on their specific needs.
- Data are tracked by federal fiscal year (October 1 – September 30). Data from FFY 2013 will be available in October 2013.

ABSENCE OF REPEAT MALTREATMENT

Through its partnerships with community-based services, DCYF works to ensure that children are safe in their homes. Safer homes equates to fewer children being placed in foster care. DCYF tracks reports of repeat abuse or neglect and intervenes to prevent subsequent abuse.

Figure B: Percent of Abused Youth Without Subsequent Abuse/Neglect Within 6 Months



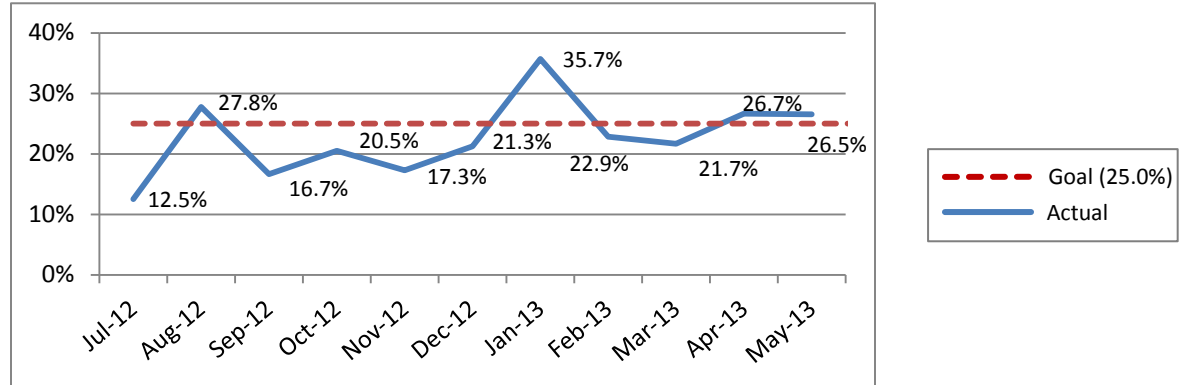
Key Points:

- DCYF has demonstrated improvement in preventing repeat cases of abuse/neglect in recent years. In 2007, 13.1 percent of youth abuse/neglect cases faced additional allegations within six months. In 2012, that figure declined to 6.9 percent.
- Data are tracked by federal fiscal year. Data from FFY 2013 will be available in October 2013.

TRAINING SCHOOL REINCARCERATION

DCYF administers the Rhode Island Training School, which provides rehabilitation services aimed at helping delinquent youth lead safe, productive, and healthy lives. By reducing youth reincarceration rates, DCYF can provide appropriate and less costly services in the youth's community.

Figure C: Percent of Youth Re-Entering Training School within 6 Months of Release



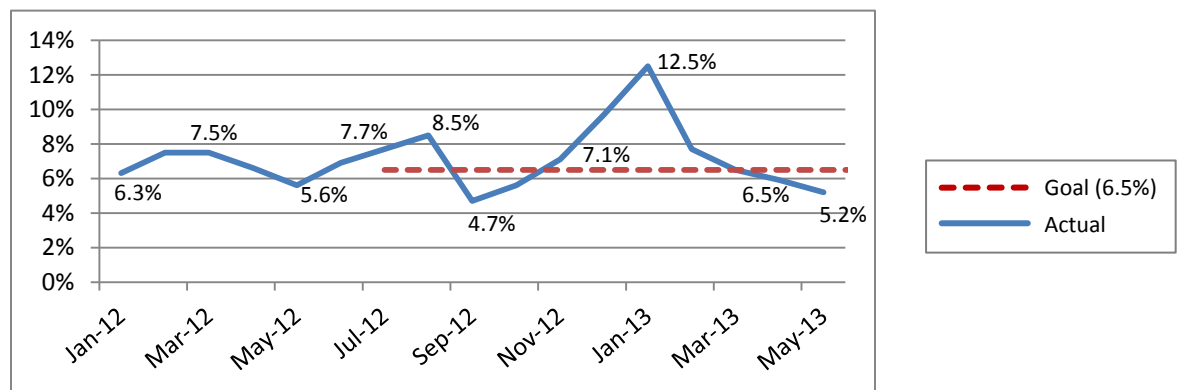
Key Points:

- In April 2013, Rhode Island was selected to be a partner state in the Pew-MacArthur Results First Initiative, which helps states assess the costs and benefits of adult and juvenile justice programs and use that data in budget and policy planning to maximize results. Through Results First, DCYF will collaborate with the Department of Corrections, the Office of Management and Budget, and other stakeholders to determine the most effective rehabilitation programs in reducing recidivism rates.

PREVENTION SERVICES

DCYF uses prevention services provided through the Family Care Community Partnership (FCCP) to divert families away from DCYF's child welfare system. Reducing the number of families entering the child welfare system from the FCCP provides better outcomes for children, as well as financial savings to the state.

Figure D: Percent of FCCP Families Returning to Family Services Unit or Probation Unit for Additional Services



Key Points:

- Services coordinated through the FCCP include housing assistance, shelter, adult and youth employment and training, GED, literacy, mental health and substance abuse treatment, early childhood services, healthcare, etc.

NEW MEASURES

Under Development

RELATIVE FOSTER CARE LICENSING

DCYF has six months to approve the foster home license for a relative caretaker to ensure that children are placed in safe, licensed homes and to maximize the amount of Federal reimbursement that the state may claim to offset the cost to care for the child. This measure illustrates, of all relative foster licenses processed within this month, the percentage processed within six months of initial application. The monthly performance goal is currently under development.

	Jan-13	Feb-13	Mar-13	Apr-13	May-13
Processed within Six Months	25.0%	36.8%	50.0%	34.8%	68.8%
Goal	N/A	N/A	N/A	N/A	N/A

YOUTH ACHIEVING PERMANENCY

DCYF strives to achieve permanency for all children who enter the foster care system. Permanency is defined as a youth being reunified with his or her family, adopted, or obtaining a guardianship. The figures below illustrate the percentage of foster care youth that achieve a permanent home. This measure is tracked by Federal fiscal year.

	2010	2011	2012
Youth Achieving Permanency	93.7%	95.8%	95.4%
Goal	N/A	96.0%	96.2%

HIGHER EDUCATION INCENTIVE GRANTS

The Higher Education Incentive Grants program provides assistance to former foster youth in an effort to reduce their financial burden when attending college. One of DCYF's goals is to increase the number of former foster youth that attend and successfully complete college. The figures below represent the number of grants awarded by fiscal year.

	2012	2013
Education Supports	49	49
Goal	N/A	51