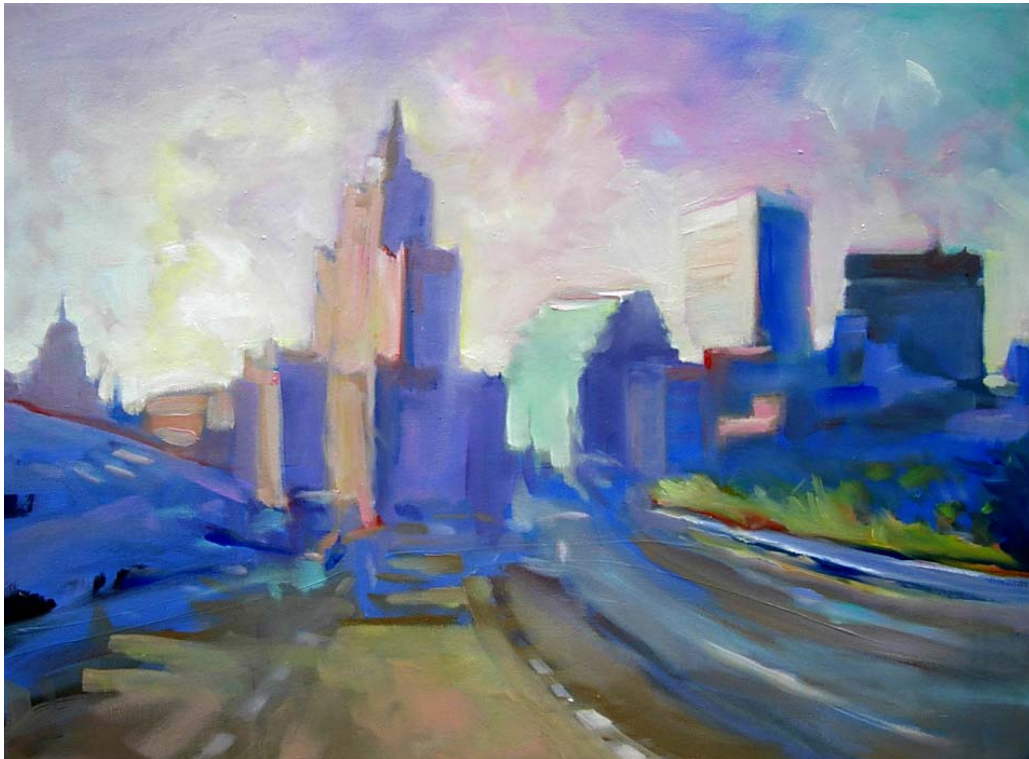


State of Rhode Island and Providence Plantations

Executive Summary



Fiscal Year 2009

Donald L. Carcieri, Governor

Appendix A

Schedules

General Revenue Budget Surplus Statement

	FY2006 Audited	FY2007 Unaudited	FY2008 Enacted	FY2008 Revised	FY2009 Recommended
Surplus					
Opening Surplus	\$ 38,698,361	\$ 38,330,947	\$ 174,323	\$ -	\$ 742,986
Audit adjustment		202			
Reappropriated Surplus	13,489,214	17,381,365	-	3,640,364	-
Subtotal	52,187,575	55,712,514	174,323	3,640,364	742,986
General Taxes	2,479,553,794	2,529,241,036	2,610,859,886	2,610,859,886	2,564,000,000
Revenue estimators' revision			-	(90,659,886)	
Changes to Adopted Estimates				29,966,847	39,592,548
Subtotal	2,479,553,794	2,529,241,036	2,610,859,886	2,550,166,847	2,603,592,548
Departmental Revenues	287,314,592	277,790,450	362,869,788	362,869,788	240,000,000
Revenue estimators' revision			-	(39,469,788)	
Changes to Adopted Estimates				15,376,315	109,298,081
Subtotal	287,314,592	277,790,450	362,869,788	338,776,315	349,298,081
Other Sources					
Gas Tax Transfers	4,322,195	4,704,602	4,685,000	4,685,000	4,685,000
Revenue estimators' revision		-	-	-	-
Other Miscellaneous	31,163,069	67,471,487	140,279,158	140,279,158	11,300,000
Rev Estimators' revision-Miscellaneous			-	5,620,842	
Changes to Adopted Estimates				35,294,223	5,301,100
Transfer from Budget Reserve Fund		19,423,025			
Lottery	323,899,490	320,989,832	339,700,000	339,700,000	363,900,000
Revenue Estimators' revision-Lottery		-	-	9,800,000	
Unclaimed Property	14,243,183	11,456,513	14,600,000	14,600,000	9,400,000
Revenue Estimators' revision-Unclaimed		-	-	1,400,000	
Subtotal	373,627,937	424,045,459	499,264,158	551,379,223	394,586,100
Total Revenues	\$ 3,140,496,323	\$ 3,231,076,945	\$ 3,472,993,832	\$ 3,440,322,385	\$ 3,347,476,729
Budget Stabilization	(63,583,898)	(65,388,158)	(69,463,363)	(68,806,448)	(73,660,834)
Total Available	\$ 3,129,100,000	\$ 3,221,401,301	\$ 3,403,704,792	\$ 3,375,156,301	\$ 3,274,558,881
Actual/Enacted Expenditures	\$ 3,073,387,688	\$ 3,217,760,937	\$ 3,403,638,116	\$ 3,403,638,116	\$ 3,272,710,433
Reappropriations	-	-	-	3,640,364	-
Supplemental - Repayment to RI Capital Fund				19,423,025	
Supplemental Appropriations	-	-	-	(52,288,190)	-
Total Expenditures	\$ 3,073,387,688	\$ 3,217,760,937	\$ 3,403,638,116	\$ 3,374,413,315	\$ 3,272,710,433
Free Surplus	\$ 38,330,947	\$ 0	\$ 66,676	\$ 742,986	\$ 1,848,448
Reappropriations	17,381,365	3,640,364	-	-	-
Transfer to Retirement Fund					
Total Ending Balances	\$ 55,712,312	\$ 3,640,364	\$ 66,676	\$ 742,986	\$ 1,848,448
Budget Reserve and Cash					
Stabilization Account	\$ 95,375,847	\$ 78,659,212	\$ 104,195,045	\$ 103,209,672	\$ 113,839,470

Expenditures from All Funds

	FY 2006	FY2007	FY 2008	FY 2008	FY 2009
	Actual	Unaudited	Enacted	Revised	Recommended
General Government					
Administration(1)	\$484,712,222	\$ 579,840,522	\$613,268,743	\$627,870,496	\$542,654,775
Business Regulation	10,818,327	11,619,331	13,135,623	12,765,050	11,748,704
Labor and Training	437,643,846	446,997,208	459,385,094	477,003,037	478,470,405
Revenue(1)	260,392,914	233,997,808	256,364,161	241,755,281	248,663,791
Legislature	30,706,758	32,350,516	35,964,082	37,567,738	35,615,553
Lieutenant Governor	900,055	874,724	925,112	839,816	884,920
Secretary of State	12,173,340	7,397,016	6,066,356	6,173,694	6,874,864
General Treasurer	37,344,072	24,775,355	36,890,123	37,357,591	31,448,068
Board of Elections	2,392,935	4,392,090	2,024,108	1,921,275	2,175,218
Rhode Island Ethics Commission	1,156,118	1,222,289	1,410,451	1,330,460	1,405,309
Governor's Office	4,929,963	4,738,217	4,921,696	4,773,728	4,658,611
Commission for Human Rights	1,181,941	1,247,126	1,388,940	1,322,567	1,382,968
Public Utilities Commission	5,179,216	5,473,869	7,096,087	6,938,452	6,869,214
Rhode Island Commission on Women	89,442	98,629	108,203	104,330	107,208
Subtotal - General Government	\$1,289,621,149	\$ 1,355,024,700	\$1,438,948,779	\$1,457,723,515	\$1,372,959,608
Human Services					
Office of Health & Human Services	-	640,980	6,578,965	7,860,219	15,744,177
Children, Youth, and Families	285,549,240	311,770,977	232,749,891	234,189,270	209,585,164
Elderly Affairs and Advocacy(2)	46,001,123	37,526,122	38,852,980	37,819,257	35,301,058
Health	108,187,155	104,636,981	125,224,331	132,285,433	124,235,173
Human Services	1,683,206,936	1,574,255,614	1,811,144,472	1,811,712,179	1,764,717,231
Mental Health, Retardation, & Hospitals	493,607,151	481,493,542	498,887,743	482,120,822	462,764,628
Office of the Child Advocate	456,409	551,198	560,757	522,070	558,800
Office of the Mental Health Advocate	377,376	385,295	424,343	405,546	431,171
Subtotal - Human Services	\$2,617,385,390	\$ 2,511,260,709	\$2,714,423,482	\$2,706,914,796	\$2,613,337,402
Education					
Elementary and Secondary	1,018,058,997	1,067,364,092	1,096,216,347	1,103,408,482	1,130,427,074
Higher Education - Board of Governors	680,079,328	728,911,092	770,836,024	783,663,952	816,325,009
RI Council on the Arts	2,626,161	2,922,282	6,484,097	4,570,637	3,275,655
RI Atomic Energy Commission	1,095,360	1,087,486	1,481,463	1,625,863	1,532,900
Higher Education Assistance Authority	22,973,871	23,939,108	29,350,404	28,939,692	29,240,665
Historical Preservation and Heritage Comm.	2,284,109	2,209,943	2,603,164	2,508,200	2,323,114
Public Telecommunications Authority	3,387,939	2,395,158	2,163,310	2,050,231	2,132,366
Subtotal - Education	\$1,730,505,765	\$ 1,828,829,161	\$1,909,134,809	\$1,926,767,057	\$1,985,256,783

Expenditures from All Funds

	FY 2006 Actual	FY2007 Unaudited	FY 2008 Enacted	FY 2008 Revised	FY 2009 Recommended
Public Safety					
Attorney General	22,225,476	21,914,607	23,903,316	23,339,313	23,731,514
Corrections	161,859,194	170,117,178	197,210,155	197,362,237	184,094,239
Judicial(3)	89,178,661	91,679,517	96,997,828	95,644,472	94,972,646
Military Staff	28,188,402	32,572,998	24,960,095	36,546,380	29,469,843
Public Safety(4)	82,700,322	91,197,828	95,327,452	92,784,191	108,978,402
Fire Safety Code Board of Appeal & Review	295,118	285,015	303,435	289,830	306,552
Office Of Public Defender	8,397,923	8,778,424	9,746,784	9,374,872	9,716,729
Subtotal - Public Safety	\$392,845,096	\$ 416,545,567	\$448,449,065	\$455,341,295	\$451,269,925
Natural Resources					
Environmental Management(5)	68,197,576	76,027,147	85,417,860	86,924,013	95,179,682
Coastal Resources Management Council(5)	4,483,026	3,897,901	4,508,659	5,702,171	-
Water Resources Board(5)	1,973,950	1,792,984	2,385,081	2,130,805	-
Subtotal - Natural Resources	\$74,654,552	\$ 81,718,032	\$92,311,600	\$94,756,989	\$95,179,682
Transportation					
Transportation	402,521,803	355,852,171	374,140,874	349,511,682	370,784,490
Subtotal - Transportation	\$402,521,803	\$ 355,852,171	\$374,140,874	\$349,511,682	\$370,784,490
Total	\$ 6,507,533,755	\$ 6,549,230,340	\$ 6,977,408,609	\$ 6,991,015,334	\$ 6,888,787,890
Proposed Audit adjustments		250,000			
		6,549,480,340			

(1) Department of Administration history adjusted for Taxation and Division of Motor Vehicles transferred in FY2007 to new Department of Revenue.

(2) Agencies merged with Department of Elderly Affairs and Advocacy include Commission on Deaf and Hard of Hearing, Governor's Commission on Disabilities, and the Developmental Disabilities Council.

(3) Judicial includes Judicial Tenure and Discipline.

(4) Agencies merged with Department of Public Safety include State Police, E-911 Emergency Telephone System, Municipal Police Training Academy, Sheriffs, Capitol Police, and the Governor's Justice Commission.

(5) Agencies to be merged with Department of Environmental Management include Coastal Resources Management and Water Resources Board.

Expenditures from General Revenues

	FY 2006 Actual	FY2007 Unaudited	FY 2008 Enacted	FY 2008 Revised	FY 2009 Recommended
General Government					
Administration(1)	\$375,154,137	\$448,583,808	\$485,351,641	\$505,196,446	\$446,358,182
Business Regulation	10,149,419	10,859,699	11,475,916	10,896,429	10,203,066
Labor and Training	7,324,546	7,146,779	6,583,162	6,377,187	6,299,992
Revenue(1)	35,740,584	34,528,687	38,575,957	35,165,844	37,374,032
Legislature	29,355,254	30,941,664	34,440,361	36,116,203	34,099,202
Lieutenant Governor	900,055	874,724	925,112	839,816	884,920
Secretary of State	5,218,294	6,150,444	5,036,136	5,042,689	5,778,144
General Treasurer	2,748,742	2,636,773	2,908,550	2,773,767	2,563,767
Board of Elections	1,439,759	3,625,842	1,437,214	1,289,947	1,512,874
Rhode Island Ethics Commission	1,156,118	1,222,289	1,410,451	1,330,460	1,405,309
Governor's Office	4,763,179	4,672,436	4,921,696	4,773,728	4,658,611
Commission for Human Rights	984,270	987,833	984,197	951,677	991,659
Public Utilities Commission	656,682	499,163	661,246	647,628	-
Rhode Island Commission on Women	89,442	98,629	108,203	104,330	107,208
Subtotal - General Government	\$475,680,481	\$552,828,770	\$594,819,842	\$611,506,151	\$552,236,966
Human Services					
Office of Health & Human Services	-	250,294	307,152	387,176	5,754,966
Children, Youth, and Families	167,965,207	189,391,301	149,249,856	151,956,515	136,984,222
Elderly Affairs and Advocacy(2)	22,963,972	19,630,145	19,510,134	18,062,670	16,789,244
Health	37,324,506	31,490,512	34,487,126	32,320,612	30,757,908
Human Services	718,532,156	704,559,182	811,185,218	795,931,661	767,944,841
Mental Health, Retardation, & Hospitals	249,867,986	238,316,374	243,459,229	234,197,334	219,609,438
Office of the Child Advocate	445,876	513,524	520,757	484,569	519,657
Office of the Mental Health Advocate	377,376	385,295	424,343	405,546	431,171
Subtotal - Human Services	\$1,197,477,079	\$1,184,536,627	\$1,259,143,815	\$1,233,746,083	\$1,178,791,447
Education					
Elementary and Secondary	834,246,326	888,448,124	909,429,659	906,392,019	930,464,291
Higher Education - Board of Governors	180,371,797	189,489,620	196,068,047	189,983,048	179,856,018
RI Council on the Arts	1,987,617	2,112,363	2,777,644	2,698,994	2,094,847
RI Atomic Energy Commission	799,460	827,654	819,869	798,827	824,470
Higher Education Assistance Authority	7,729,028	6,708,495	11,019,684	10,219,792	9,913,909
Historical Preservation and Heritage Comm.	1,395,341	1,615,594	1,577,792	1,487,312	1,348,825
Public Telecommunications Authority	1,257,552	1,312,264	1,363,654	1,316,196	1,365,306
Subtotal - Education	\$1,027,787,121	\$1,090,514,114	\$1,123,056,349	\$1,112,896,188	\$1,125,867,666

Expenditures from General Revenues

	FY 2006 Actual	FY2007 Unaudited	FY 2008 Enacted	FY 2008 Revised	FY 2009 Recommended
Public Safety					
Attorney General	\$19,895,945	\$19,799,873	\$21,335,305	\$20,626,429	\$21,212,039
Corrections	151,117,191	155,796,271	187,954,532	185,001,095	178,173,504
Judicial(3)	77,771,437	82,039,512	84,964,917	82,799,916	82,622,926
Military Staff	2,982,041	2,533,905	2,563,864	2,497,995	3,739,948
Public Safety(4)	70,980,886	79,871,941	79,985,466	78,250,595	81,956,037
Fire Safety Code Board of Appeal & Review	295,118	285,015	303,435	289,830	306,552
Office Of Public Defender	8,270,299	8,564,734	9,324,951	9,015,956	9,468,259
Subtotal - Public Safety	\$331,312,917	\$348,891,251	\$386,432,470	\$378,481,816	\$377,479,265
Natural Resources					
Environmental Management(5)	38,089,630	38,071,851	36,413,000	34,213,462	38,335,089
Coastal Resources Management Council(5)	1,681,767	2,076,370	1,879,559	1,940,645	-
Water Resources Board(5)	1,358,690	1,648,213	1,893,081	1,628,970	-
Subtotal - Natural Resources	\$41,130,087	\$41,796,434	\$40,185,640	\$37,783,077	\$38,335,089
Transportation					
Transportation	-	-	-	-	-
Subtotal - Transportation	-	-	-	-	-
Total	\$3,073,387,685	\$3,218,567,196	\$3,403,638,116	\$3,374,413,315	\$3,272,710,433
Proposed Audit adjustments		(806,258)			
		3,217,760,938			

(1) Department of Administration history adjusted for Taxation and Division of Motor Vehicles transferred in FY2007 to new Department of Revenue.

(2) Agencies merged with Department of Elderly Affairs and Advocacy include Commission on Deaf and Hard of Hearing, Governor's Commission on Disabilities, and the Developmental Disabilities Council.

(3) Judicial includes Judicial Tenure and Discipline.

(4) Agencies merged with Department of Public Safety include State Police, E-911 Emergency Telephone System, Municipal Police Training Academy, Sheriffs, Capitol Police, and the Governor's Justice Commission.

(5) Agencies to be merged with Department of Environmental Management include Coastal Resources Management and Water Resources Board.

Expenditures from Federal Funds

	FY 2006	FY2007	FY 2008	FY 2008	FY 2009
	Actual	Unaudited	Enacted	Revised	Recommended
General Government					
Administration(1)	\$28,843,073	\$46,312,586	\$45,581,896	\$46,591,786	\$33,952,039
Business Regulation	-	43,291	51,742	201,742	-
Labor and Training	33,831,488	29,931,444	28,124,845	35,037,304	35,395,196
Revenue(1)	1,529,556	1,147,679	1,335,145	2,128,997	1,894,095
Legislature	-	-	-	-	-
Lieutenant Governor	-	-	-	-	-
Secretary of State	6,496,305	976,109	586,744	572,503	541,139
General Treasurer	594,151	476,081	1,916,146	1,150,186	1,170,081
Board of Elections	953,176	766,248	586,894	631,328	662,344
Rhode Island Ethics Commission	-	-	-	-	-
Governor's Office	-	-	-	-	-
Commission for Human Rights	197,671	259,293	404,743	370,890	391,309
Public Utilities Commission	76,230	92,650	100,124	97,097	100,547
Rhode Island Commission on Women	-	-	-	-	-
Subtotal - General Government	\$72,521,650	\$80,005,381	\$78,688,279	\$86,781,833	\$74,106,750
Human Services					
Office of Health & Human Services	-	93,852	5,826,265	7,158,672	7,891,563
Children, Youth, and Families	114,995,314	120,424,524	80,211,094	79,619,679	69,633,001
Elderly Affairs and Advocacy(2)	15,736,403	12,646,234	13,717,234	13,490,681	12,898,249
Health	59,868,983	60,912,006	65,305,387	74,843,215	68,088,703
Human Services	961,465,758	866,755,175	989,435,533	1,005,657,588	987,279,551
Mental Health, Retardation, & Hospitals	240,348,945	240,445,805	243,971,014	234,903,609	226,713,559
Office of the Child Advocate	10,533	37,674	40,000	37,501	39,143
Office of the Mental Health Advocate	-	-	-	-	-
Subtotal - Human Services	\$1,392,425,936	\$1,301,315,270	\$1,398,506,527	\$1,415,710,945	\$1,372,543,769
Education					
Elementary and Secondary	\$180,108,204	\$174,313,592	\$178,395,910	\$188,634,265	\$191,008,411
Higher Education - Board of Governors	1,347,949	2,871,077	3,526,446	5,300,814	3,646,277
RI Council on the Arts	584,039	653,685	706,453	671,643	741,355
RI Atomic Energy Commission	136,215	101,942	420,940	537,277	407,277
Higher Education Assistance Authority	9,185,706	8,846,030	12,612,204	12,366,402	12,550,536
Historical Preservation and Heritage Comm.	581,658	508,937	529,078	528,895	479,640
Public Telecommunications Authority	-	-	-	-	-
Subtotal - Education	\$191,943,771	\$187,295,263	\$196,191,031	\$208,039,296	\$208,833,496

Expenditures from Federal Funds

	FY 2006 Actual	FY2007 Unaudited	FY 2008 Enacted	FY 2008 Revised	FY 2009 Recommended
Public Safety					
Attorney General	\$1,390,957	\$1,274,491	\$1,379,464	\$1,367,430	\$1,263,609
Corrections	9,064,113	9,252,613	2,807,500	3,553,559	2,640,735
Judicial(3)	2,334,472	1,412,645	2,064,119	2,649,752	1,939,312
Military Staff	24,913,198	27,561,826	20,594,699	30,966,740	23,999,074
Public Safety(4)	6,776,732	6,130,210	5,521,399	7,807,107	5,832,120
Fire Safety Code Board of Appeal & Review	-	-	-	-	-
Office Of Public Defender	127,624	213,690	421,833	358,916	248,470
Subtotal - Public Safety	\$44,607,096	\$45,845,475	\$32,789,014	\$46,703,504	\$35,923,320
Natural Resources					
Environmental Management(5)	\$18,683,990	\$21,320,143	\$28,153,533	\$30,791,460	\$34,845,754
Coastal Resources Management Council(5)	2,086,789	1,659,031	1,607,000	1,770,436	-
Water Resources Board(5)	203,685	64,170	-	-	-
Subtotal - Natural Resources	\$20,974,464	\$23,043,344	\$29,760,533	\$32,561,896	\$34,845,754
Transportation					
Transportation	\$258,876,586	\$225,339,560	\$274,706,956	\$239,425,158	\$263,437,353
Subtotal - Transportation	\$258,876,586	\$225,339,560	\$274,706,956	\$239,425,158	\$263,437,353
Total	\$1,981,349,503	\$1,862,844,293	\$2,010,642,340	\$2,029,222,632	\$1,989,690,442
Proposed Audit adjustments		1,056,258			
		1,863,900,551			

(1) Department of Administration history adjusted for Taxation and Division of Motor Vehicles transferred in FY2007 to new Department of Revenue.

(2) Agencies merged with Department of Elderly Affairs and Advocacy include Commission on Deaf and Hard of Hearing, Governor's Commission on Disabilities, and the Developmental Disabilities Council.

(3) Judicial includes Judicial Tenure and Discipline.

(4) Agencies merged with Department of Public Safety include State Police, E-911 Emergency Telephone System, Municipal Police Training Academy, Sheriffs, Capitol Police, and the Governor's Justice Commission.

(5) Agencies to be merged with Department of Environmental Management include Coastal Resources Management and Water Resources Board.

Expenditures from Restricted Receipts

	FY 2006	FY2007	FY 2008	FY 2008	FY 2009
	Actual	Unaudited	Enacted	Revised	Recommended
General Government					
Administration(1)	\$1,861,763	\$6,784,585	\$12,109,406	\$9,173,841	\$21,406,394
Business Regulation	668,908	716,341	1,607,965	1,666,879	1,545,638
Labor and Training	15,355,905	15,552,019	28,283,698	25,075,274	19,068,769
Revenue(1)	691,133	705,160	845,506	892,006	925,663
Legislature	1,351,504	1,408,852	1,523,721	1,451,535	1,516,351
Lieutenant Governor	-	-	-	-	-
Secretary of State	458,741	270,463	443,476	558,502	555,581
General Treasurer	28,150,156	21,474,116	31,772,287	33,193,653	27,460,845
Board of Elections	-	-	-	-	-
Rhode Island Ethics Commission	-	-	-	-	-
Governor's Office	117,777	(3,617)	-	-	-
Commission for Human Rights	-	-	-	-	-
Public Utilities Commission	4,446,304	4,882,056	6,334,717	6,193,727	6,768,667
Rhode Island Commission on Women	-	-	-	-	-
Subtotal - General Government	\$53,102,191	\$51,789,975	\$82,920,776	\$78,205,417	\$79,247,908
Human Services					
Office of Health & Human Services	-	\$296,834	\$445,548	\$314,371	\$2,097,648
Children, Youth, and Families	2,033,284	1,767,022	1,753,941	1,757,941	1,757,941
Elderly Affairs and Advocacy(2)	2,429,412	742,692	740,612	\$1,344,355	\$628,565
Health	10,972,385	12,204,991	25,403,142	25,092,196	25,359,152
Human Services	3,159,071	2,941,257	9,223,721	10,022,930	9,367,839
Mental Health, Retardation, & Hospitals	6,776	183,295	3,040,000	2,593,834	2,390,000
Office of the Child Advocate	-	-	-	-	-
Office of the Mental Health Advocate	-	-	-	-	-
Subtotal - Human Services	\$18,600,928	\$18,136,091	\$40,606,964	\$41,125,627	\$41,601,145
Education					
Elementary and Secondary	\$3,496,007	\$4,432,359	\$7,149,893	\$7,131,008	\$7,714,372
Higher Education - Board of Governors	762,134	1,067,062	893,520	1,093,499	641,526
RI Council on the Arts	-	-	-	200,000	-
RI Atomic Energy Commission	-	-	-	-	-
Higher Education Assistance Authority	-	-	-	-	-
Historical Preservation and Heritage Comm.	307,110	85,412	496,294	491,993	494,649
Public Telecommunications Authority	-	-	-	-	-
Subtotal - Education	\$4,565,251	\$5,584,833	\$8,539,707	\$8,916,500	\$8,850,547

Expenditures from Restricted Receipts

	FY 2006	FY2007	FY 2008	FY 2008	FY 2009
	Actual	Unaudited	Enacted	Revised	Recommended
Public Safety					
Attorney General	\$719,263	\$678,356	\$973,547	\$940,574	\$980,866
Corrections	2,423	-	-	-	-
Judicial(3)	7,631,618	7,272,677	8,518,792	8,661,007	8,710,408
Military Staff	264,966	242,449	407,532	301,504	315,321
Public Safety(4)	1,911,680	1,905,648	1,639,043	1,469,162	434,000
Fire Safety Code Board of Appeal & Review	-	-	-	-	-
Office Of Public Defender	-	-	-	-	-
Subtotal - Public Safety	\$10,529,950	\$10,099,130	\$11,538,914	\$11,372,247	\$10,440,595
Natural Resources					
Environmental Management(5)	\$9,817,750	\$15,257,111	\$16,945,441	\$16,071,872	\$16,661,875
Coastal Resources Management Council(5)	669,970	162,500	1,022,100	395,000	-
Water Resources Board(5)	327,254	-	400,000	400,000	-
Subtotal - Natural Resources	\$10,814,974	\$15,419,611	\$18,367,541	\$16,866,872	\$16,661,875
Transportation					
Transportation	-\$11,959	\$1,451,760	\$661,834	\$1,444,708	\$1,447,246
Subtotal - Transportation	-\$11,959	\$1,451,760	\$661,834	\$1,444,708	\$1,447,246
Total	\$97,601,335	\$102,481,400	\$162,635,736	\$157,931,371	\$158,249,316
Proposed Audit adjustments		-			
		\$102,481,400			

(1) Department of Administration history adjusted for Taxation and Division of Motor Vehicles transferred in FY2007 to new Department of Revenue.

(2) Agencies merged with Department of Elderly Affairs and Advocacy include Commission on Deaf and Hard of Hearing, Governor's Commission on Disabilities, and the Developmental Disabilities Council.

(3) Judicial includes Judicial Tenure and Discipline.

(4) Agencies merged with Department of Public Safety include State Police, E-911 Emergency Telephone System, Municipal Police Training Academy, Sheriffs, Capitol Police, and the Governor's Justice Commission.

(5) Agencies to be merged with Department of Environmental Management include Coastal Resources Management and Water Resources Board.

Expenditures from Other Funds

	FY 2006 Actual	FY2007 Unaudited	FY 2008 Enacted	FY 2008 Revised	FY 2009 Recommended
General Government					
Administration(1)	\$78,853,249	\$78,159,543	\$70,225,800	\$66,908,423	\$40,938,160
Business Regulation	-	-	-	-	-
Labor and Training	381,131,907	394,366,966	396,393,389	410,513,272	417,706,448
Revenue(1)	222,431,641	197,616,282	215,607,553	203,568,434	208,470,001
Legislature	-	-	-	-	-
Lieutenant Governor	-	-	-	-	-
Secretary of State	-	-	-	-	-
General Treasurer	5,851,023	188,385	293,140	239,985	253,375
Board of Elections	-	-	-	-	-
Rhode Island Ethics Commission	-	-	-	-	-
Governor's Office	49,007	69,398	-	-	-
Commission for Human Rights	-	-	-	-	-
Public Utilities Commission	-	-	-	-	-
Rhode Island Commission on Women	-	-	-	-	-
Subtotal - General Government	\$688,316,827	\$670,400,574	\$682,519,882	\$681,230,114	\$667,367,984
Human Services					
Office of Health & Human Services	-	-	-	-	-
Children, Youth, and Families	555,435	188,130	1,535,000	855,135	1,210,000
Elderly Affairs and Advocacy(2)	4,871,336	4,507,051	4,885,000	4,921,551	4,985,000
Health	21,281	29,472	28,676	29,410	29,410
Human Services	49,951	-	1,300,000	100,000	125,000
Mental Health, Retardation, & Hospitals	3,383,444	2,548,068	8,417,500	10,426,045	14,051,631
Office of the Child Advocate	-	-	-	-	-
Office of the Mental Health Advocate	-	-	-	-	-
Subtotal - Human Services	\$8,881,447	\$7,272,721	\$16,166,176	\$16,332,141	\$20,401,041
Education					
Elementary and Secondary	\$208,460	\$170,017	\$1,240,885	\$1,251,190	\$1,240,000
Higher Education - Board of Governors	497,597,448	535,483,333	570,348,011	587,286,591	632,181,188
RI Council on the Arts	54,505	156,234	3,000,000	1,000,000	439,453
RI Atomic Energy Commission	159,685	157,890	240,654	289,759	301,153
Higher Education Assistance Authority	6,059,137	8,384,583	5,718,516	6,353,498	6,776,220
Historical Preservation and Heritage Comm	-	-	-	-	-
Public Telecommunications Authority	2,130,387	1,082,894	799,656	734,035	767,060
Subtotal - Education	\$506,209,622	\$545,434,951	\$581,347,722	\$596,915,073	\$641,705,074

Expenditures from Other Funds

	FY 2006 Actual	FY2007 Unaudited	FY 2008 Enacted	FY 2008 Revised	FY 2009 Recommended
Public Safety					
Attorney General	\$219,311	\$161,887	\$215,000	\$404,880	\$275,000
Corrections	1,675,467	5,068,294	6,448,123	8,807,583	3,280,000
Judicial(3)	1,441,134	954,683	1,450,000	1,533,797	1,700,000
Military Staff	28,197	2,234,818	1,394,000	2,780,141	1,415,500
Public Safety(4)	3,031,024	3,290,029	8,181,544	5,257,327	20,756,245
Fire Safety Code Board of Appeal & Review	-	-	-	-	-
Office Of Public Defender	-	-	-	-	-
Subtotal - Public Safety	\$6,395,133	\$11,709,711	\$17,688,667	\$18,783,728	\$27,426,745
Natural Resources					
Environmental Management(5)	\$1,606,206	\$1,378,042	\$3,905,886	\$5,847,219	\$5,336,964
Coastal Resources Management Council(5)	44,500	-	-	1,596,090	-
Water Resources Board(5)	84,321	80,601	92,000	101,835	-
Subtotal - Natural Resources	\$1,735,027	\$1,458,643	\$3,997,886	\$7,545,144	\$5,336,964
Transportation					
Transportation	\$143,657,176	\$129,060,851	\$98,772,084	\$108,641,816	\$105,899,891
Subtotal - Transportation	\$143,657,176	\$129,060,851	\$98,772,084	\$108,641,816	\$105,899,891
Total	\$1,355,195,232	\$1,365,337,451	\$1,400,492,417	\$1,429,448,016	\$1,468,137,699
Proposed Audit adjustments		-			
		\$1,365,337,451			

(1) Department of Administration history adjusted for Taxation and Division of Motor Vehicles transferred in FY2007 to new Department of Revenue.

(2) Agencies merged with Department of Elderly Affairs and Advocacy include Commission on Deaf and Hard of Hearing, Governor's Commission on Disabilities, and the Developmental Disabilities Council.

(3) Judicial includes Judicial Tenure and Discipline.

(4) Agencies merged with Department of Public Safety include State Police, E-911 Emergency Telephone System, Municipal Police Training Academy, Sheriffs, Capitol Police, and the Governor's Justice Commission.

(5) Agencies to be merged with Department of Environmental Management include Coastal Resources Management and Water Resources Board.

Full-Time Equivalent Positions

	FY 2006	FY 2007	FY 2008	FY 2008 Revised	FY 2009
General Government					
Administration	777.9	1,065.2	1,032.9	791.8	775.8
Statwide Retirement Vacancies	-	-	-	-	(300.0)
Business Regulation	110.0	103.0	105.0	102.0	98.0
Labor & Training	510.7	467.9	454.9	417.5	407.2
Revenue	492.0	473.0	475.0	465.0	460.0
Legislature	289.0	294.0	298.2	297.9	297.9
Office of the Lieutenant Governor	10.0	9.5	9.5	9.0	8.0
Secretary of State	59.0	56.0	58.0	58.0	55.0
General Treasurer	87.5	86.5	88.0	88.0	86.0
Boards for Design Professionals	4.0	4.0	-	-	-
Board Of Elections	15.0	14.0	14.0	14.0	14.0
Rhode Island Ethics Commission	12.0	12.0	12.0	12.0	12.0
Office of the Governor	49.5	46.0	44.0	45.0	39.0
Commission for Human Rights	15.0	14.5	14.5	14.5	14.5
Public Utilities Commission	46.0	45.7	45.7	45.0	44.0
Rhode Island Commission on Women	1.0	1.0	1.0	1.0	1.0
Subtotal - General Government	2,478.6	2,692.3	2,652.7	2,360.7	2,012.4
Human Services					
Office of Health and Human Services		5.0	5.0	6.0	102.2
Children, Youth, and Families	849.8	789.0	805.0	788.5	733.5
Elderly Affairs and Advocacy	52.0	48.0	46.0	54.6	44.6
Health	499.4	465.6	459.0	437.1	409.5
Human Services	1,173.4	1,111.0	1,109.0	1,067.6	966.4
Mental Health, Retardation, & Hospitals	1,992.7	1,824.3	1,761.0	1,657.6	1,372.6
Office of the Child Advocate	6.1	5.8	5.8	5.8	5.8
Commission On the Deaf & Hard of Hearing (1)	3.0	3.0	3.0	-	-
RI Developmental Disabilities Council (1)	2.0	2.0	2.0	-	-
Governor's Commission on Disabilities (1)	6.6	6.6	5.6	-	-
Office of the Mental Health Advocate	3.7	3.7	3.7	3.7	3.7
Subtotal - Human Services	4,588.7	4,264.0	4,205.1	4,020.9	3,638.3
Education					
Elementary and Secondary Education	339.1	131.2	134.2	133.2	140.2
Davies	-	133.0	133.0	133.0	127.0
School for the Deaf	-	68.0	68.0	65.8	62.8
Elementary Secondary Education - Total	339.1	332.2	335.2	332.0	330.0
Office of Higher Education Non-Sponsored Research	22.0	21.0	21.0	21.0	20.1
URI Non-Sponsored Research	1,959.6	1,940.1	1,930.1	1,930.1	1,900.1
RIC Non-Sponsored Research	859.2	843.5	850.5	850.5	835.5
CCRI Non-Sponsored Research	748.9	750.2	748.2	748.2	733.2
Higher Education - Total Non-Sponsored	3,589.7	3,554.8	3,549.8	3,549.8	3,488.9

Full-Time Equivalent Positions

	FY 2006	FY 2007	FY 2008	FY 2008 Revised	FY 2009
RI Council On The Arts	8.0	8.6	8.6	8.6	8.6
RI Atomic Energy Commission	8.6	8.6	8.6	8.6	8.6
Higher Education Assistance Authority	46.0	46.0	46.0	42.6	42.6
Historical Preservation and Heritage Commission	17.6	17.6	17.6	17.6	16.6
Public Telecommunications Authority	22.0	20.0	20.0	20.0	20.0
Subtotal - Education	4,031.0	3,987.8	3,985.8	3,979.2	3,915.3
Public Safety					
Attorney General	234.5	234.8	234.8	234.8	231.1
Corrections	1,589.0	1,498.6	1,508.6	1,515.0	1,464.0
Judicial	742.0	732.5	732.5	732.3	729.3
Military Staff	105.0	109.0	110.0	104.0	103.0
Public Safety	-	-	-	609.1	591.5
E-911 (2)	53.6	53.6	53.6	-	-
RI State Fire Marshal (2)	38.0	36.0	35.0	-	-
Commission on Judicial Tenure and Discipline	1.0	1.0	-	-	-
Rhode Island Justice Commission (2)	8.5	7.6	7.6	-	-
Municipal Police Training Academy (2)	4.0	4.0	4.0	-	-
State Police (2)	282.0	273.0	272.0	-	-
Fire Safety Code Board of Appeal and Review	3.0	3.0	3.0	3.0	3.0
Office of the Public Defender	93.5	93.5	93.5	93.5	93.5
Subtotal - Public Safety	3,154.1	3,046.6	3,054.6	3,291.7	3,215.4
Natural Resources					
Environmental Management	531.3	505.3	491.4	482.0	501.0
Coastal Resources Management Council (3)	30.0	30.0	30.0	30.0	-
Water Resources Board (3)	9.0	9.0	9.0	6.0	-
Subtotal - Natural Resources	570.3	544.3	530.4	518.0	501.0
Transportation					
Transportation	809.7	786.7	773.7	733.2	729.2
Subtotal - Transportation	809.7	786.7	773.7	733.2	729.2
Total Non Sponsored	15,632.4	15,321.7	15,202.3	14,903.7	14,011.6
Higher Education Sponsored Research *					
Office	1.0	1.0	1.0	1.0	1.0
CCRI	100.0	100.0	100.0	100.0	100.0
RIC	82.0	82.0	82.0	82.0	82.0
URI	602.0	602.0	602.0	602.0	602.0
Subtotal Sponsored Research	785.0	785.0	785.0	785.0	785.0
Total Personnel Authorizations	16,417.4	16,106.7	15,987.3	15,688.7	14,796.6
Total Personnel **	16,417.4	16,106.7	15,987.3	15,688.7	14,796.6

*A total of 785.0 FTE positions in Higher Education in FY 2008 and FY 2009 represent FTE's supported by sponsored res funds. Commencing in FY2005, these positions were included in the overall FTE Cap. In addition, there are separate caps for each program and for sponsored/non-sponsored research FTE's.

- (1) Agencies merged with Department of Elderly Affairs and Advocacy.
- (2) Agencies merged with Department of Public Safety
- (3) Agencies to be merged with Department of Environmental Management

General Revenues as Recommended

	FY 2006 Actual	FY 2007 Unaudited	FY 2008 Revised	FY 2009 Recommended
Personal Income Tax	\$996,792,298	\$1,065,367,487	\$1,069,500,000	\$1,100,300,000
General Business Taxes				
Business Corporations	165,054,033	148,149,226	163,566,847	160,300,000
Public Utilities Gross Earnings	96,027,349	102,109,351	104,000,000	104,000,000
Financial Institutions	3,988,509	4,423,263	(100,000)	400,000
Insurance Companies	52,877,704	56,624,296	74,100,000	75,100,000
Bank Deposits	1,494,366	1,673,925	1,700,000	1,700,000
Health Care Provider Assessment	47,002,360	47,969,855	52,300,000	53,225,000
Sales and Use Taxes				
Sales and Use	869,162,931	873,203,817	865,000,000	888,400,000
Motor Vehicle	52,625,943	46,878,903	44,500,000	46,267,548
Motor Fuel	31,099	1,311,762	1,200,000	1,200,000
Cigarettes	126,340,938	120,480,817	119,100,000	117,300,000
Alcohol	10,870,193	10,705,751	11,000,000	11,000,000
Other Taxes				
Inheritance and Gift	39,204,438	34,683,979	30,100,000	30,100,000
Racing and Athletics	3,489,811	2,921,166	2,800,000	2,600,000
Realty Transfer	14,591,822	12,737,438	11,400,000	11,700,000
Total Taxes	2,479,553,794	2,529,241,036	2,550,166,847	2,603,592,548
Departmental Receipts	287,314,592	277,790,450	338,776,315	349,298,081
Taxes and Departmentals	2,766,868,386	2,807,031,486	2,888,943,162	2,952,890,629
Other Sources				
Gas Tax Transfer	4,322,195	4,704,602	4,685,000	4,685,000
Other Miscellaneous	31,163,069	86,894,512	145,900,000	16,601,100
Lottery	323,899,490	320,989,832	384,794,223	363,900,000
Unclaimed Property	14,243,183	11,456,513	16,000,000	9,400,000
Other Sources	373,627,937	424,045,459	551,379,223	394,586,100
Total General Revenues	\$3,140,496,323	\$3,231,076,945	\$3,440,322,385	\$3,347,476,729

Changes to FY 2008 Enacted Revenue Estimates

	Enacted	Revenue Estimating Conference Estimates	Changes to Adopted Estimates	Total
Personal Income Tax	\$1,082,856,883	(\$34,756,883)	\$21,400,000	\$1,069,500,000
General Business Taxes				
Business Corporations	167,207,055	(9,207,055)	5,566,847	163,566,847
Public Utilities Gross Earnings	109,300,000	(5,300,000)	-	104,000,000
Financial Institutions	2,003,344	(2,603,344)	500,000	(100,000)
Insurance Companies	68,833,704	2,766,296	2,500,000	74,100,000
Bank Deposits	1,600,000	100,000	-	1,700,000
Health Care Provider Assessment	48,900,000	3,400,000	-	52,300,000
Sales and Use Taxes				
Sales and Use	908,723,500	(43,723,500)	-	865,000,000
Motor Vehicle	50,235,400	(5,735,400)	-	44,500,000
Motor Fuel	1,100,000	100,000	-	1,200,000
Cigarettes	112,500,000	6,600,000	-	119,100,000
Alcohol	11,100,000	(100,000)	-	11,000,000
Other Taxes				
Inheritance and Gift	30,100,000	-	-	30,100,000
Racing and Athletics	2,600,000	200,000	-	2,800,000
Realty Transfer	13,800,000	(2,400,000)	-	11,400,000
Total Taxes	\$2,610,859,886	(\$90,659,886)	\$29,966,847	\$2,550,166,847
Departmental Receipts	\$362,869,788	(\$39,469,788)	\$15,376,315	\$338,776,315
Taxes and Departmentals	\$2,973,729,674	(\$130,129,674)	\$45,343,162	\$2,888,943,162
Other Sources				
Gas Tax Transfer	\$4,685,000	\$0	\$0	\$4,685,000
Other Miscellaneous	140,279,158	5,620,842	-	145,900,000
Lottery	339,700,000	9,800,000	35,294,223	384,794,223
Unclaimed Property	14,600,000	1,400,000	-	16,000,000
Other Sources	\$499,264,158	\$16,820,842	\$35,294,223	\$551,379,223
Total General Revenues	\$3,472,993,832	(\$113,308,832)	\$80,637,385	\$3,440,322,385

Changes to FY 2009 Adopted Revenue Estimates

	Revenue Estimating Conference Estimates	Changes to the Adopted Estimates	Total
Personal Income Tax	\$1,082,100,000	\$18,200,000	\$1,100,300,000
General Business Taxes			
Business Corporations	160,000,000	300,000	160,300,000
Public Utilities Gross Earnings	104,000,000	-	104,000,000
Financial Institutions	(19,000,000)	19,400,000	400,000
Insurance Companies	73,000,000	2,100,000	75,100,000
Bank Deposits	1,700,000	-	1,700,000
Health Care Provider Assessme	53,500,000	(275,000)	53,225,000
Sales and Use Taxes			
Sales and Use	888,400,000	-	888,400,000
Motor Vehicle	46,400,000	(132,452)	46,267,548
Motor Fuel	1,200,000	-	1,200,000
Cigarettes	117,300,000	-	117,300,000
Alcohol	11,000,000	-	11,000,000
Other Taxes			
Inheritance and Gift	30,100,000	-	30,100,000
Racing and Athletics	2,600,000	-	2,600,000
Realty Transfer	11,700,000	-	11,700,000
Total Taxes	\$2,564,000,000	\$39,592,548	\$2,603,592,548
Departmental Receipts	\$240,000,000	\$109,298,081	\$349,298,081
Taxes and Departmentals	\$2,804,000,000	\$148,890,629	\$2,952,890,629
Other Sources			
Gas Tax Transfer	\$4,685,000	\$0	\$4,685,000
Other Miscellaneous	11,300,000	5,301,100	16,601,100
Lottery	363,900,000	-	363,900,000
Unclaimed Property	9,400,000	-	9,400,000
Other Sources	\$389,285,000	\$5,301,100	\$394,586,100
Total General Revenues	\$3,193,285,000	\$154,191,729	\$3,347,476,729

General Revenue Changes to Adopted Estimates

FY 2008

Taxes

Personal Income Taxes

Limit Historic Structures Tax Credits to \$20.0 million \$21,400,000

Subtotal: Personal Income Taxes **\$21,400,000**

General Business Taxes

Insurance: Limit Historic Structures Tax Credits to \$20.0 million \$2,500,000

Financial Institutions: Limit Historic Structures Tax Credits to \$20.0 million 500,000

Business Corporations: Adjust REC Estimate for FY 07 Audit Adjustment 5,166,847

Business Corporations: Limit Historic Structures Tax Credits to \$20.0 million 400,000

Subtotal: General Business Taxes **\$8,566,847**

Subtotal: All Taxes **\$29,966,847**

Departmental Revenues

Fines and Penalties

Judiciary: Make Driving while using a Handheld Device an Offense \$87,500

Judiciary: Require Court Costs in lieu of Fines for Good Driving Dismissals 275,000

Subtotal: Fines and Penalties **\$362,500**

Sales and Services

DHS: Advance Slater Uncompensated Care Distributions \$14,713,815

Subtotal: Sales and Service **\$14,713,815**

Miscellaneous Departmental Revenues

DHS: RI Housing Grants \$300,000

Subtotal: Miscellaneous Departmental Revenues **\$300,000**

Subtotal: All Departmental Revenues **\$15,376,315**

Other Sources

Other Miscellaneous

Transfer from RI Housing \$26,020,247

Transfer from RI Resource Recovery 5,000,000

DEM: Access All Available Resources in U.S.T. Replacement Fund 2,000,000

DOC: Transfer Excess from Correctional Industries 1,250,000

MHRH/AG: Medmal Settlement 700,000

Treasury: Transfer Excess from Bond Refunding Authority 323,976

Subtotal: Other Miscellaneous **\$35,294,223**

Subtotal: Other Sources **\$35,294,223**

Total FY 2008 General Revenue Adjustments **\$80,637,385**

General Revenue Changes to Adopted Estimates

FY 2009

Taxes

Personal Income Taxes

Limit Historic Structures Tax Credits to \$40.0 million \$18,200,000

Subtotal: Personal Income Taxes **\$18,200,000**

General Business Taxes

Financial Institutions: Adjust REC Estimate for FY 07 Audit Adjustment \$19,000,000

Insurance: Limit Historic Structures Tax Credits to \$40.0 million 2,100,000

Financial Institutions: Limit Historic Structures Tax Credits to \$40.0 million 400,000

Business Corporate: Limit Historic Structures Tax Credits to \$40.0 million 300,000

Provider Tax: Reduce Nursing Home Reimbursement Rate (275,000)

Subtotal: General Business Taxes **\$21,525,000**

Sales and Use Taxes

Motor Carrier Single State Registration Refunds (132,452)

Subtotal: Sales and Use Taxes **(\$132,452)**

Subtotal: All Taxes **\$39,592,548**

Departmental Revenues

Licenses and Fees

DHS: Reinststitute the Hospital Licensing Fee \$77,991,212

DHS: Expand Hospital Licensing Fee to 4.94% of hospital net patient revenue 32,720,450

Taxation: Include Bottled Water in Hard-to-Dispose Taxable Beverages 611,919

DOC: Increase Community Corrections Fees 275,868

DOH: Discontinue Licensing of Massage Parlors (11,900)

DOA: Replace Writ Service by State Employees with Constable Service (275,000)

Subtotal: Licenses and Fees **\$111,312,549**

Fines and Penalties

Judiciary: Require Court Costs in lieu of Fines for Good Driving Dismissals \$1,100,000

Judiciary: Make Driving while using a Handheld Mobile Telephone an Offense 350,000

Subtotal: Fines and Penalties **\$1,450,000**

General Revenue Changes to Adopted Estimates

FY 2009

Sales and Services

DOH: Convert Newborn Screening and Hearing Fees to Restricted Receipts (\$1,733,160)

Subtotal: Sales and Services (\$1,733,160)

Miscellaneous Departmental Revenues

DHS: RI Housing Grants \$300,000

DOA: Cost Recoveries from New and Converted Restricted Receipts 100,000

DOA: Convert Energy Grants to Restricted Receipts (2,131,308)

Subtotal: Miscellaneous Departmental Revenues (\$1,731,308)

Subtotal: All Departmental Revenues \$109,298,081

Other Sources

Other Miscellaneous

Transfer from Resource Recovery to General Fund \$4,000,000

Prior Year Supplier Overpayments Credit as Determined by Audit 825,000

DHS: Recognize federal from DEFRA Child Support Benefit 476,100

Subtotal: Other Miscellaneous \$5,301,100

Subtotal: Other Sources \$5,301,100

Total FY 2009 General Revenue Adjustments \$154,191,729

Other Revenue Enhancements

FY 2008

Other Sources

DOT: Accept Payment for Upgrading Radio System \$335,000

Subtotal: Other Sources \$335,000

Total FY 2008 Other Revenue Adjustments \$335,000

FY 2009

Restricted Receipts

DOH: Convert Newborn Screening and Hearing Fees to Restricted Receipts \$1,733,160

DOH: Increase Newborn Screening and Hearing Fees 515,130

RIDE: Increase RITEAF Line Surcharge by \$0.07 320,544

Subtotal: Restricted Receipts 2,568,834

Other Sources

DOT: Charge Utility Permit Fees for Work on Highway Right-of-Way \$ 1,000,000

DOT: Charge Logo Sign Fees 100,000

Subtotal: Other Sources \$ 1,100,000

Total FY 2009 Other Revenue Adjustments \$3,668,834