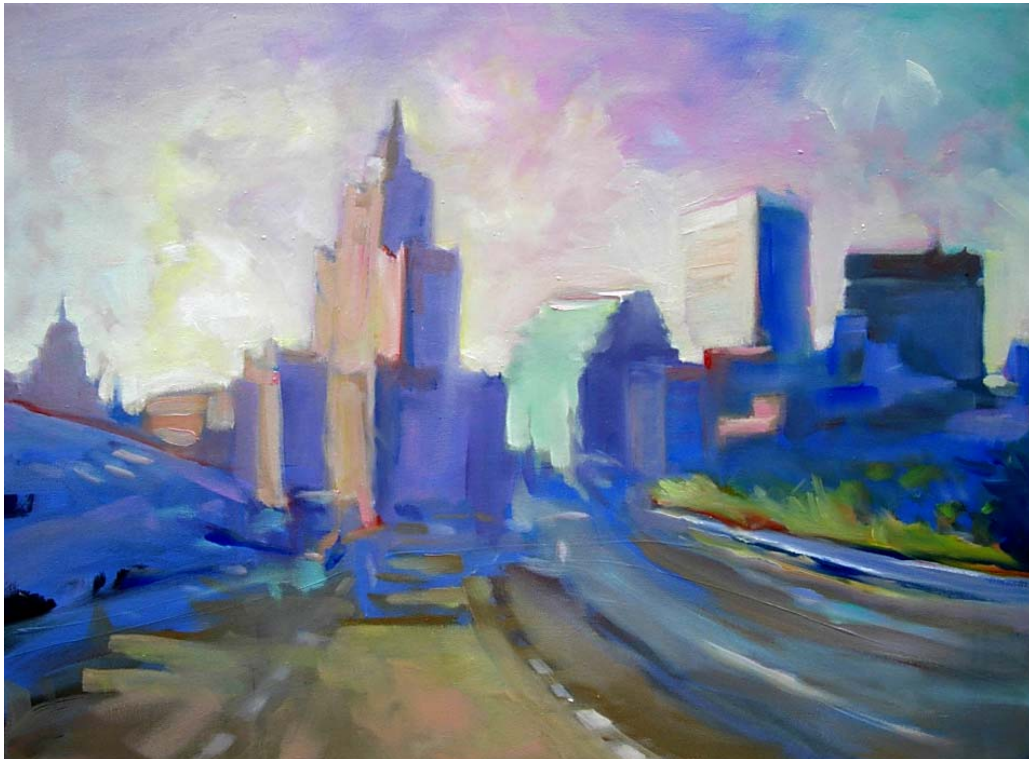


State of Rhode Island and Providence Plantations

Personnel Supplement



Fiscal Year 2009

Donald L. Carcieri, Governor

Office of the Governor

	<u>Grade</u>	<u>FY 2008</u>		<u>FY 2009</u>	
		<u>FTE</u>	<u>Cost</u>	<u>FTE</u>	<u>Cost</u>
Classified					
Programming Services Officer	131	1.0	72,967	1.0	72,967 ⁽¹⁾
Subtotal		1.0	72,967	1.0	72,967
Unclassified					
Governor	527F	1.0	117,817	1.0	117,817
Chief of Staff	850	1.0	140,713	1.0	140,713
Chief Information Officer	848	2.0	245,546	2.0	245,546
Executive Director	847	1.0	110,012	1.0	110,012
Associate Director Planning, Policy, Reg	843	1.0	105,881	1.0	105,881
Deputy Exec. Assistant/Communications	841	3.0	309,000	3.0	309,000
Executive Assistant/Chief of Staff	841	1.0	100,428	1.0	100,428
Director of Public Information	839	1.0	89,350	1.0	89,350
Assistant Director Policy	839	1.0	88,715	1.0	88,715
Staff Attorney V	836	1.0	78,385	1.0	78,385
Executive Assistant	836	1.0	107,373	1.0	107,373
Executive Assistant	835	1.0	66,839	1.0	66,839
Supervisor of Fiscal Services	834	2.0	149,143	2.0	149,143
Special Assistant	832	1.0	70,113	1.0	70,113
Principial Projects Mgr	831	2.0	134,620	2.0	134,620
Project Manager	830	1.0	64,287	1.0	64,287
Prin Plan & Program Specialist	828	2.0	127,775	2.0	127,775
Special Project Coordinator	829	1.0	64,445	1.0	64,445
Associate Executive Assistant	826	1.0	56,542	-	- ⁽²⁾
Administrative Secretary	825	2.0	99,264	2.0	99,264
Administrative Assistant	825	2.0	101,731	2.0	101,731
Office Manager	825	1.0	56,915	1.0	56,915
Admin Support Specialist	824	3.4	167,571	3.4	167,571
Sr Information & Public Relations Spec.	824	2.0	101,376	2.0	101,376
Administrative Assistant	822	1.0	48,228	1.0	48,228
Administrative Assistant/Secretary	821	1.6	74,731	1.6	74,731
Senior Administrative Aide	821	2.0	94,608	2.0	94,608
Administrative Assistant	819	4.0	151,960	3.0	113,284 ⁽³⁾
Subtotal		44.0	\$3,123,368	42.0	\$3,028,150
Cost Allocation to Department of Administration			(47,609)		- ⁽⁴⁾
Uncompensated Leave Days			(67,973)		-

Office of the Governor

	<u>Grade</u>	<u>FY 2008</u>		<u>FY 2009</u>	
		<u>FTE</u>	<u>Cost</u>	<u>FTE</u>	<u>Cost</u>
Turnover			(206,159)		-
Program Reduction		-	-	(4.0)	(234,779) ⁽⁵⁾
Total Salaries		45.0	\$2,874,594	39.0	\$2,866,338
Benefits					
Retirement			597,049		605,813
Medical			378,965		366,177
Retiree Health			112,399		111,122
FICA			221,649		209,745
Payroll Accrual			15,573		15,093
Total Salaries and Benefits		45.0	\$4,200,229	39.0	\$4,174,288
Cost Per FTE Position			93,338		107,033
Statewide Benefit Assessment			109,233		108,923
Payroll Costs		45.0	\$4,309,462	39.0	\$4,283,211
Purchased Services					
Clerical and Temporary Services			24,000		24,000
Total			\$24,000		\$24,000
Total Personnel		45.0	\$4,333,462	39.0	\$4,307,211
Distribution by Source of Funds					
General Revenue		45.0	4,333,462	39.0	4,307,211
Total: All Funds		45.0	\$4,333,462	39.0	\$4,307,211