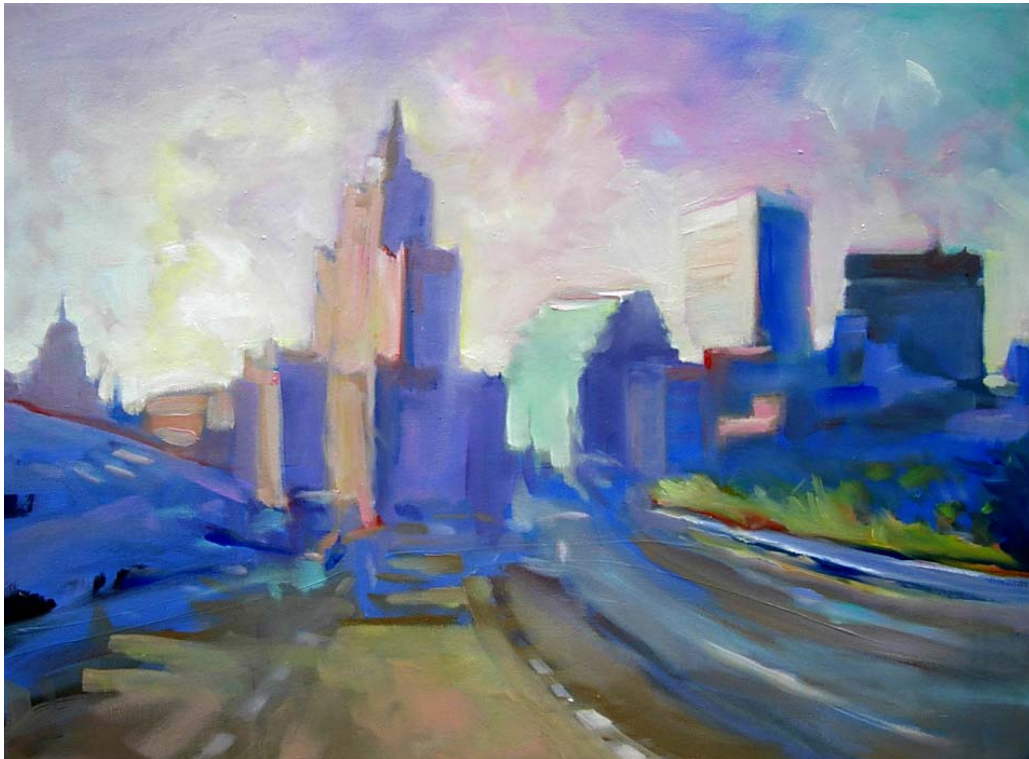


State of Rhode Island and Providence Plantations

# Personnel Supplement



## Fiscal Year 2009

Donald L. Carcieri, Governor

# Office of the Child Advocate

	<u>Grade</u>	<u>FY 2008</u>		<u>FY 2009</u>	
		<u>FTE</u>	<u>Cost</u>	<u>FTE</u>	<u>Cost</u>
<b>Classified</b>					
Child Advocate	0862 A	1.0	91,457	1.0	91,457
Assistant Child Advocate	0834 A	1.0	71,036	1.0	71,036
Staff Attorney III	0832 A	0.8	52,831	0.8	52,831
Senior Monitoring and Evaluation Specialist	0825 A	1.0	47,216	1.0	48,796
Chief Field Investigator	0820 A	1.0	38,629	1.0	39,526
Administrative Secretary	0816 A	1.0	38,488	1.0	38,488
<b>Subtotal</b>		<b>5.8</b>	<b>\$339,657</b>	<b>5.8</b>	<b>\$342,134</b>
Turnover			(18,643)		(3,874)
Uncompensated Leave Days			(9,294)		-
<b>Total Salaries</b>		<b>5.8</b>	<b>\$311,720</b>	<b>5.8</b>	<b>\$338,260</b>
<b>Benefits</b>					
Retirement			64,745		71,475
Medical			61,895		72,017
FICA			24,145		26,030
Retiree Health			12,189		13,058
Payroll Accrual			1,703		1,792
<b>Total Salaries and Benefits</b>		<b>5.8</b>	<b>\$476,397</b>	<b>5.8</b>	<b>\$522,632</b>
Cost Per FTE Position			82,137		90,109
Statewide Benefit Assessment			11,845		12,855
<b>Payroll Costs</b>		<b>5.8</b>	<b>\$488,242</b>	<b>5.8</b>	<b>\$535,487</b>
<b>Purchased Services</b>					
Clerical and Temporary Services			2,000		2,000
Training and Educational Services			1,000		-
<b>Total</b>			<b>\$3,000</b>		<b>\$2,000</b>
<b>Total Personnel</b>		<b>5.8</b>	<b>\$491,242</b>	<b>5.8</b>	<b>\$537,487</b>
<b>Distribution by Source of Funds</b>					
General Revenue		5.4	453,764	5.4	498,367
Federal Funds		0.4	37,478	0.4	39,120
<b>Total: All Funds</b>		<b>5.8</b>	<b>\$491,242</b>	<b>5.8</b>	<b>\$537,487</b>