

State of Rhode Island and Providence Plantations

# Budget



## Fiscal Year 2013

Volume 1 – General Government, Quasi-Public  
Agencies and Component Units

Lincoln D. Chafee, Governor

# Agency

---

## Board Of Elections

---

### Agency Mission

To protect the integrity of the electoral process and to effectively and efficiently administer the provisions of United States and Rhode Island election laws.

### Agency Description

The Board of Elections supervises all elections and state and local referenda. The Board supervises the maintenance, preparation and delivery of electronic optical-scan voting equipment, election return forms and other supplies used at each polling place. The Board instructs and certifies all election officials assigned to polls and prepares and distributes poll worker guides and related materials. The Board also appoints, trains and assigns bi-partisan pairs of supervisors for the mail ballot program for institutionally confined persons. The Board certifies the results of all elections under its jurisdiction, including tabulating machine and mail ballot votes cast; conducts recounts; certifies results to the Secretary of State; issues certificates of election to candidates; and provides an official tabulation of returns.

The Board oversees voter registration and public education activities and provides all registration materials used in the State. The Board trains and supervises all individuals who serve as statewide voter registration agents. The agency conducts voter registration drives throughout the State and at each institution of higher education in Rhode Island. It oversees and coordinates the registration of voters at other state agencies and departments as part of the National Voter Registration Act. The Board carries out the mandates of the Rhode Island Campaign Contributions and Expenditures Reporting Act (the "Act"). The agency oversees and monitors the campaign finance activities of candidates, political action committees and state vendors. The Board's responsibilities also include the development, printing and distribution of forms required for candidate, committee and vendor reports as well as the publication of manuals describing and explaining the requirements set forth in the statutes. The Board reviews and makes available for inspection all reports filed, prepares summaries and an annual report, and is authorized to investigate suspected violations of the Act. The agency oversees and administers the public financing of campaigns program for each of the State's five general offices.

### Statutory History

Chapter 825 of the Public Laws of 1901 created the "State Returning Board," which was replaced by Chapter 1040 of the Public Laws of 1941 which created the "Board of Elections" as a partisan board. Chapter 312 of the Public Laws of 1979 amended the law to establish the Board of Elections as a non-partisan board. R.I.G.L. 17-7 sets forth its duties and powers. R.I.G.L. 17-25 sets out the mandates of the Rhode Island Campaign Contributions and Expenditure Reporting Act (public financing of campaigns). R.I.G.L. 42-6 provides for the registration of voters at other state agencies. R.I.G.L. 17-27 provides for reporting requirements and monitoring of political contributions by state vendors. R.I.G.L. 17-19 provides for the use of an optical scan precinct count voting system in state elections.

# Budget

## Board Of Elections

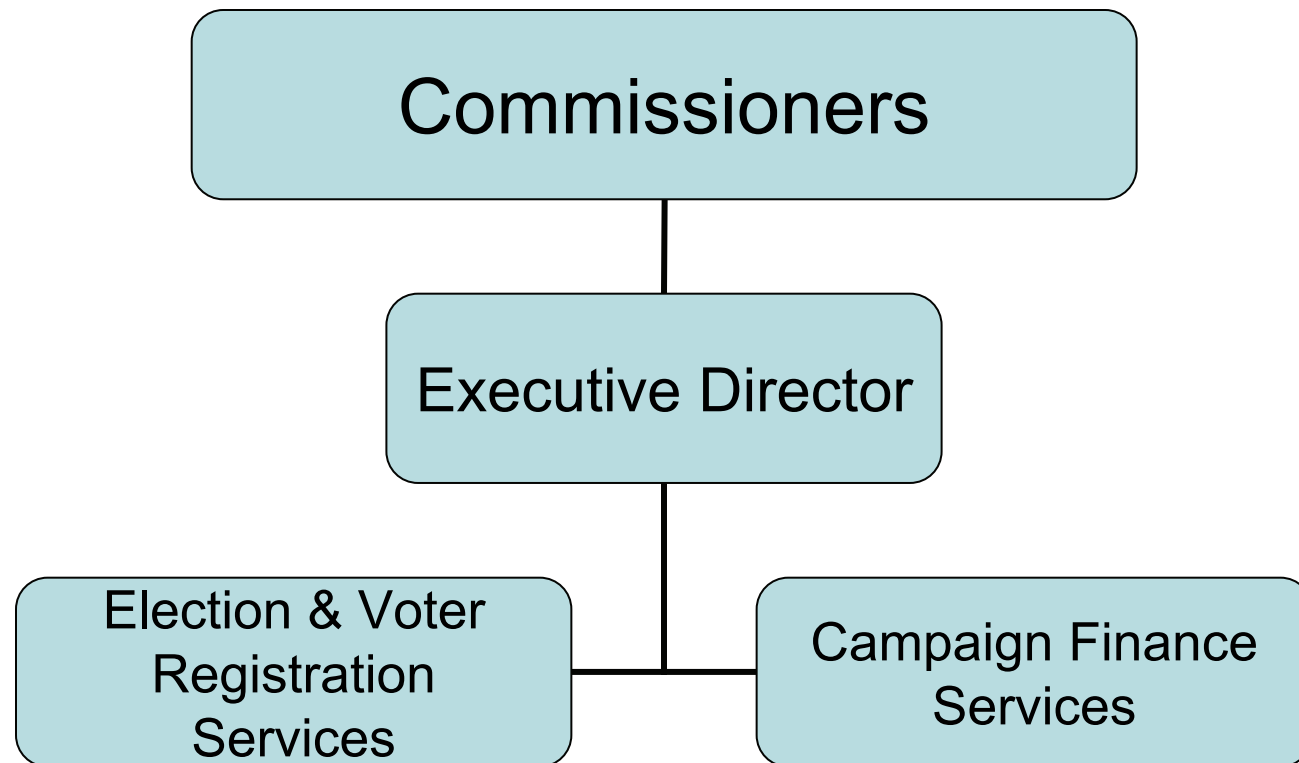
	FY 2010 Audited	FY 2011 Audited	FY 2012 Enacted	FY 2012 Revised	FY 2013 Recommend
<b>Expenditures By Program</b>					
Central Management	1,202,211	3,400,118	1,875,905	1,818,261	1,944,116
<b>Total Expenditures</b>	<b>\$1,202,211</b>	<b>\$3,400,118</b>	<b>\$1,875,905</b>	<b>\$1,818,261</b>	<b>\$1,944,116</b>
<b>Expenditures By Object</b>					
Personnel	1,077,962	1,528,996	1,634,323	1,523,485	1,594,442
Operating Supplies and Expenses	120,749	184,298	203,070	252,134	349,674
Assistance and Grants	3,500	1,656,210	-	4,130	-
<b>Subtotal: Operating Expenditures</b>	<b>1,202,211</b>	<b>3,369,504</b>	<b>1,837,393</b>	<b>1,779,749</b>	<b>1,944,116</b>
Capital Purchases and Equipment	-	30,614	38,512	38,512	-
<b>Total Expenditures</b>	<b>\$1,202,211</b>	<b>\$3,400,118</b>	<b>\$1,875,905</b>	<b>\$1,818,261</b>	<b>\$1,944,116</b>
<b>Expenditures By Funds</b>					
General Revenue	1,092,280	3,290,424	1,825,905	1,768,261	1,944,116
Federal Funds	109,931	109,694	50,000	50,000	-
<b>Total Expenditures</b>	<b>\$1,202,211</b>	<b>\$3,400,118</b>	<b>\$1,875,905</b>	<b>\$1,818,261</b>	<b>\$1,944,116</b>
<b>FTE Authorization</b>	<b>11.5</b>	<b>11.0</b>	<b>12.0</b>	<b>11.0</b>	<b>11.0</b>
<b>Agency Measures</b>					
Minorities as a Percentage of the Workforce	25.0%	27.3%	27.3%	27.3%	27.3%
Females as a Percentage of the Workforce	33.3%	36.4%	36.4%	36.4%	36.4%
Persons with Disabilities as a Percentage of the Workforce	-	-	-	-	-

# The Agency

---

Board of Elections

---



# Personnel

## Board Of Elections Central Management

	Grade	FY 2012		FY 2013	
		FTE	Cost	FTE	Cost
<b>Unclassified</b>					
Executive Director	0844A	1.0	137,574	1.0	137,574
Principal Projects Manager	0831A	1.0	82,130	1.0	82,130
Supervising Accountant	0831A	1.0	74,770	1.0	74,770
Senior Administrative Aide/Trng Spec	0319A	1.0	52,292	1.0	52,292
Planning & Program Dev. Specialist	0320A	4.0	196,591	4.0	198,413
Confidential Secretary	0817A	1.0	43,873	1.0	43,873
Senior Receptionist	0312A	1.0	38,124	1.0	38,334
Administrative Assistant	0312A	1.0	36,438	1.0	36,509
Commission Chairman	0510F	-	7,000	-	-
Commissioners	0510F	-	42,000	-	-
<b>Subtotal</b>		<b>11.0</b>	<b>\$710,792</b>	<b>11.0</b>	<b>\$663,895</b>
Overtime		-	-	-	5,360
<b>Subtotal</b>		<b>-</b>	<b>-</b>	<b>-</b>	<b>\$5,360</b>
<b>Total Salaries</b>		<b>11.0</b>	<b>\$710,792</b>	<b>11.0</b>	<b>\$669,255</b>
<b>Benefits</b>					
Defined Contribution Plan		-	-	-	7,129
FICA		-	52,471	-	48,881
Medical		-	126,497	-	141,301
Payroll Accrual		-	-	-	3,986
Retiree Health		-	45,399	-	45,544
Retirement		-	152,079	-	140,606
<b>Subtotal</b>		<b>-</b>	<b>\$376,446</b>	<b>-</b>	<b>\$387,447</b>
<b>Total Salaries and Benefits</b>		<b>11.0</b>	<b>\$1,087,238</b>	<b>11.0</b>	<b>\$1,056,702</b>
Cost Per FTE Position			\$98,840		\$96,064
Statewide Benefit Assessment		-	26,657	-	24,895
Temporary and Seasonal		-	50,000	-	120,000
<b>Subtotal</b>		<b>-</b>	<b>\$76,657</b>	<b>-</b>	<b>\$144,895</b>
<b>Payroll Costs</b>		<b>11.0</b>	<b>\$1,163,895</b>	<b>11.0</b>	<b>\$1,201,597</b>
<b>Purchased Services</b>					
Building and Grounds Maintenance		-	300	-	300
Clerical and Temporary Services		-	5,500	-	9,000
Legal Services		-	80,000	-	110,000
Management and Consultant Services		-	271,969	-	271,969
Other Contract Services		-	1,821	-	1,576
<b>Subtotal</b>		<b>-</b>	<b>\$359,590</b>	<b>-</b>	<b>\$392,845</b>

# Personnel

---

Board Of Elections

Central Management

---

	Grade	FY 2012		FY 2013	
		FTE	Cost	FTE	Cost
<b>Total Personnel</b>		<b>11.0</b>	<b>\$1,523,485</b>	<b>11.0</b>	<b>\$1,594,442</b>
<b>Distribution By Source Of Funds</b>					
General Revenue		11.0	1,473,485	11.0	1,594,442
Federal Funds		-	50,000	-	-
<b>Total All Funds</b>		<b>11.0</b>	<b>\$1,523,485</b>	<b>11.0</b>	<b>\$1,594,442</b>