

State of Rhode Island and Providence Plantations

# Budget



## Fiscal Year 2013

Volume III – Education

Lincoln D. Chafee, Governor

# Agency

---

## Rhode Island Higher Education Assistance Authority

---

### Agency Mission

The Authority provides a system of financial assistance programs consisting of the Scholarship and Grant Program, the Tuition Savings Program, and as a guaranty agency in the Federal Family Education Loan Program. Together, these programs enhance the aspirational and motivational levels of students and provide tools for educators/administrators in every school district in Rhode Island by: enabling early awareness of the relevance, importance, and value of college and career planning; promoting access to higher education; supporting the state's workforce needs; and providing financial assistance to qualified students and parents, many of whom are or might be discouraged and/or restricted from participating in post-secondary education because of insufficient financial resources.

### Agency Description

The Higher Education Assistance Authority (RIHEAA or "the Authority") is organized into three divisions which administer respectively: the Scholarship and Grant Program; the Tuition Savings Program (CollegeBoundfund®); and the Loan Program. The Scholarship and Grant Program administers various student financial assistance programs funded by general revenue appropriations from the State of Rhode Island, as well as by funds received from the U.S. Department of Education and funds derived from other sources. These programs include State Scholarship/Grant Program, the Federal LEAP/SLEAP Programs and the College Access Challenge Grants. The Tuition Savings Program administers the activities of the CollegeBoundfund®, including the student financial assistance programs funded by revenues generated by CollegeBoundfund®. Those student financial assistance programs are the Academic Promise Scholarship Program, the CollegeBoundfund® Matching Grant Program and the Adult Education Grant Program. In addition, revenues from CollegeBoundfund® are used to supplement the State Grant Program. The Loan Program administers RIHEAA's activities as the state designated guaranty agency in the Federal Family Education Loan Program (FFELP) assisting students and their parents in financing higher education expenses with federally guaranteed student loans. As part of Loan Program's federally mandated responsibilities to conduct early awareness and college outreach activities, RIHEAA has initiated WaytogoRI.org, an online web portal provided free to all Rhode Island residents, all elementary and secondary schools (public, private and parochial) and post-secondary institutions. WaytogoRI.org allows students, parents and educators to explore education and career options, plan and prepare for college and careers, conduct college and career searches and apply on-line and transmit academic transcripts electronically for college admission.

### Statutory History

The Authority was created in 1977 to administer the grant, scholarship, and loan programs for the State of Rhode Island, replacing a previously existing loan entity and assuming some functions of the Department of Education. Title 16 Chapter 56 and 57 of the Rhode Island General Laws establish and provide for the organization, functions, and statutory award formula of the Authority.

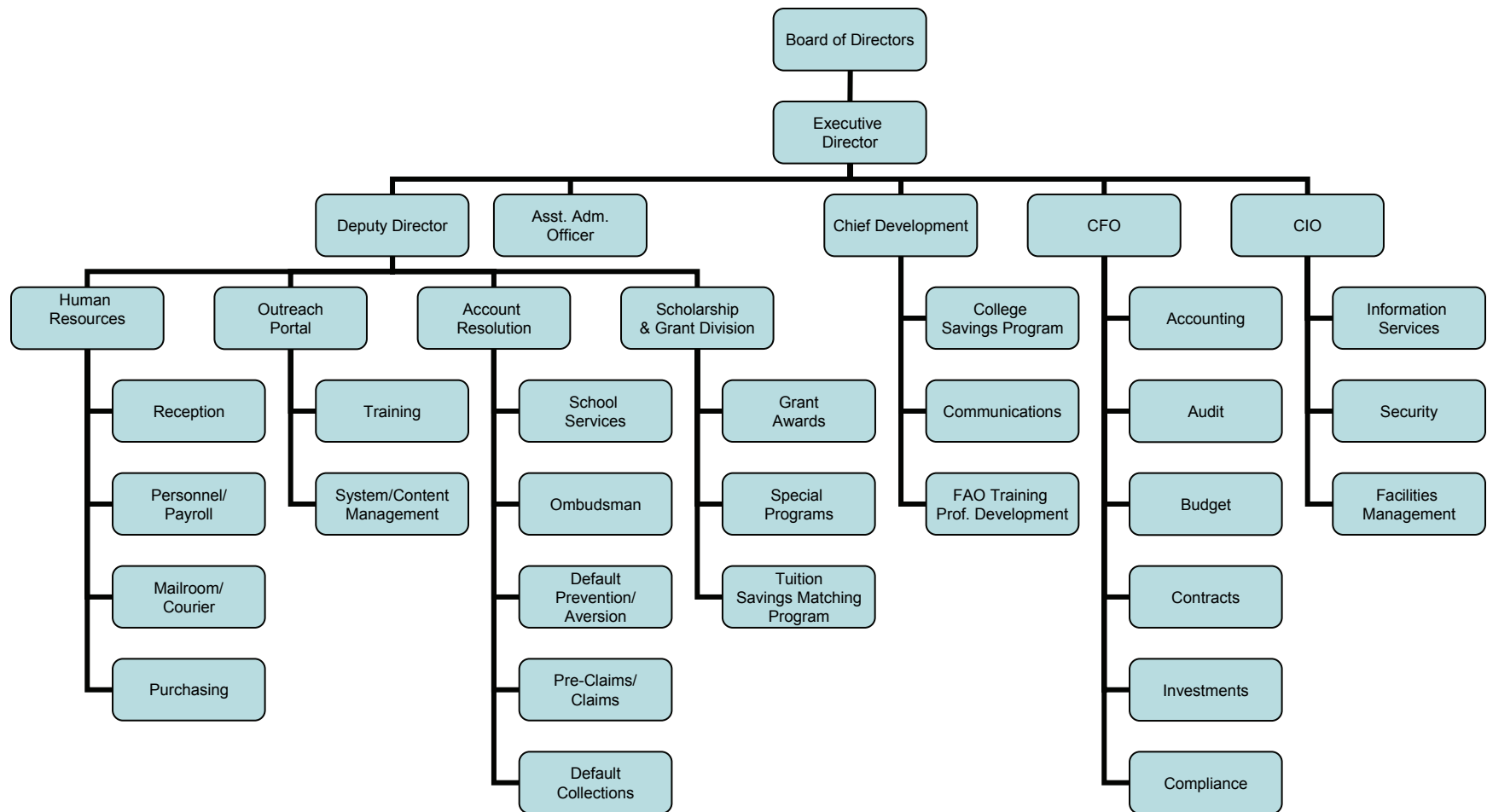
# Budget

## Rhode Island Higher Education Assistance Authority

	FY 2010 Audited	FY 2011 Audited	FY 2012 Enacted	FY 2012 Revised	FY 2013 Recommend
<b>Expenditures By Program</b>					
Central Management	23,669,359	23,672,445	27,412,147	27,920,690	-
<b>Total Expenditures</b>	<b>\$23,669,359</b>	<b>\$23,672,445</b>	<b>\$27,412,147</b>	<b>\$27,920,690</b>	-
<b>Expenditures By Object</b>					
Personnel	8,663,516	8,556,037	11,226,305	10,769,323	-
Operating Supplies and Expenses	2,340,581	1,693,738	3,002,713	2,895,500	-
Assistance and Grants	12,664,262	13,422,670	12,683,129	13,755,867	-
<b>Subtotal: Operating Expenditures</b>	<b>23,668,359</b>	<b>23,672,445</b>	<b>26,912,147</b>	<b>27,420,690</b>	-
Capital Purchases and Equipment	1,000	-	500,000	500,000	-
<b>Total Expenditures</b>	<b>\$23,669,359</b>	<b>\$23,672,445</b>	<b>\$27,412,147</b>	<b>\$27,920,690</b>	-
<b>Expenditures By Funds</b>					
General Revenue	6,611,632	7,320,186	5,913,104	5,911,798	-
Federal Funds	10,873,936	9,744,236	13,508,323	13,034,719	-
Other Funds	6,183,791	6,608,023	7,990,720	8,974,173	-
<b>Total Expenditures</b>	<b>\$23,669,359</b>	<b>\$23,672,445</b>	<b>\$27,412,147</b>	<b>\$27,920,690</b>	-
<b>FTE Authorization</b>	<b>37.3</b>	<b>41.6</b>	<b>41.6</b>	<b>41.6</b>	
<b>Total</b>	<b>37.3</b>	<b>41.6</b>	<b>41.6</b>	<b>41.6</b>	
<b>Agency Measures</b>					
Minorities as a Percentage of the Workforce	8.3%	5.0%	9.7%	9.7%	9.7%
Females as a Percentage of the Workforce	79.5%	71.5%	67.7%	67.7%	67.7%
Persons with Disabilities as a Percentage of the Workforce	6.3%	2.0%	6.5%	6.5%	6.5%
Scholarship and Grants Program Percentage of Eligible Students Receiving Grants	46.87%	48.67%	52.06%	52.06%	57.56%
Scholarship and Grants Program Average Grant Award	\$762	\$751	\$614	\$614	\$524
Scholarship and Grants Program State Grant as a Percentage of Unmet Need Prior to State Grants	6.18%	5.90%	4.79%	4.79%	3.96%

# The Agency

## Rhode Island Higher Education Assistance Authority



# Personnel

## Rhode Island Higher Education Assistance Authority Central Management

	Grade	FY 2012		FY 2013	
		FTE	Cost	FTE	Cost
<b>Classified</b>					
Deputy Director, RIHEAA	0143A	1.0	116,479	-	-
Asst. Dir. Fin. & Contract Mgmt.	0141A	1.0	106,620	-	-
Programmer Analyst Manager	0138A	1.0	102,040	-	-
Tech Support Analyst III	0135A	1.0	86,481	-	-
Chief of Program Development	0134A	1.0	81,168	-	-
Programmer Analyst II	0132A	1.0	75,122	-	-
Director Program Administration	0131A	4.0	271,689	-	-
Supervising Accountant	0131A	1.0	65,726	-	-
Programmer Analyst I JAVA	0128A	1.0	57,181	-	-
Tech Support Analyst I	0128A	1.0	51,741	-	-
Senior Accountant	0323A	1.0	50,449	-	-
System Support Tech II	0321A	1.0	50,246	-	-
Assistant Business Management Officer	0319A	1.0	49,748	-	-
Program Planner	0125A	1.0	46,283	-	-
Senior Telephone Operator	0315A	1.0	46,019	-	-
Information Services Tech I	0316A	1.0	45,484	-	-
Department Manager	0124A	3.0	132,203	-	-
Document Imaging Technician	0313A	1.0	43,806	-	-
Clerk Secretary	0318A	1.0	42,623	-	-
Default Prevention/Collections Agent II	0318A	2.0	85,100	-	-
Senior Word Processing Typist	0312A	1.0	41,933	-	-
Educational Assistant Tech. II	0316A	3.0	121,878	-	-
Assistant Administrative Officer	0121A	2.0	80,417	-	-
Storeskeeper	0315A	1.0	38,796	-	-
Accountant	0320A	1.0	38,536	-	-
Default Prevention/Collection I	0316A	2.0	70,244	-	-
Educational Assistant Tech. I	0314A	3.6	122,063	-	-
	<b>Subtotal</b>	<b>39.6</b>	<b>\$2,120,075</b>	-	-
<b>Unclassified</b>					
Executive Director	0848A	1.0	124,118	-	-
Assistant Administrative Officer	0821A	1.0	45,853	-	-
	<b>Subtotal</b>	<b>2.0</b>	<b>\$169,971</b>	-	-
Turnover			(241,555)	-	-
	<b>Subtotal</b>		<b>(\$241,555)</b>	-	-
	<b>Total Salaries</b>	<b>41.6</b>	<b>\$2,048,491</b>	-	-
<b>Benefits</b>					
Defined Contribution Plan			-	-	-
FICA			155,688	-	-
Medical			413,106	-	-
Payroll Accrual			-	-	-
Retiree Health			125,953	-	-
Retirement			441,167	-	-
	<b>Subtotal</b>		<b>\$1,135,914</b>	-	-

# Personnel

---

## Rhode Island Higher Education Assistance Authority Central Management

---

	Grade	FY 2012		FY 2013	
		FTE	Cost	FTE	Cost
<b>Total Salaries and Benefits</b>		41.6	\$3,184,405	-	-
Cost Per FTE Position			\$76,548		-
Statewide Benefit Assessment			76,818	-	-
<b>Subtotal</b>			<b>\$76,818</b>	-	-
<b>Payroll Costs</b>		41.6	\$3,261,223	-	-
<b>Purchased Services</b>					
Legal Services			127,250	-	-
Management and Consultant Services			7,380,850	-	-
<b>Subtotal</b>			<b>\$7,508,100</b>	-	-
<b>Total Personnel</b>		41.6	\$10,769,323	-	-
<b>Distribution By Source Of Funds</b>					
General Revenue		3.3	315,431	-	-
Federal Funds		36.1	10,179,719	-	-
Other Funds		2.2	274,173	-	-
<b>Total All Funds</b>		41.6	<b>\$10,769,323</b>	-	-

---

# Rhode Island Higher Education Assistance Authority Performance Measure Narratives

---

## ***Central Management***

---

### ***Scholarship and Grants Program Percentage of Eligible Students Receiving Grants***

This measure indicates the number of students to whom grants are awarded, as a percentage of the total number of eligible applicants. It reflects the goal of providing financial assistance to as many eligible applicants as possible, based on the availability of funds. Eligibility requirements include Rhode Island residency, at least half-time matriculation at an accredited school leading to a degree or certificate, and financial need. Applicants must also not be in default of federal student loans, nor can they owe a refund on a federal grant. Eligible applicants, for purposes of this measure, include those who submit applications after the March deadline who meet all other eligibility criteria. Funding sources for this grant program include general revenues and amounts earmarked from CollegeBound Fund administrative fees. FY 2011 and earlier also contained federal supplemental funding.

The standard is the seventy percent achieved in 1993, being the highest percentage in the agency's experience.

---

### ***Scholarship and Grants Program Average Grant Award***

The average grant award indicator equals the total amount of scholarship and grant awards to students divided by the total number of recipients. Funding sources for this grant program include general revenues and amounts earmarked from CollegeBound Fund administrative fees. FY 2011 and earlier also contained federal supplemental funding.

The standard is the previous highest average grant award.

### ***Scholarship and Grants Program State Grant as a Percentage of Unmet Need Prior to State Grants***

This measure indicates the amount of student need met by state grants as a percentage of the total unmet need prior to students receiving state grants. It is calculated by dividing the average grant by the average student financial need. The measure reflects the goal of meeting a student's financial need to the maximum extent possible, based on the availability of funds. Unmet need is defined as the student's cost of attendance at his/her college of choice minus the student's expected family contribution toward that cost and minus his/her estimated Pell Grant eligibility. Funding sources for this grant program include general revenues and amounts earmarked from CollegeBound Fund administrative fees. FY 2011 and earlier also contained federal supplemental funding.

Average financial need for FY 2013 is based on a presumed increase of 3% over the previous year.

---