

State of Rhode Island and Providence Plantations

Budget



Fiscal Year 2014

Volume I – General Government, Quasi-Public
Agencies and Component Units

Lincoln D. Chafee, Governor

Agency

General Assembly - Constitution

Agency Mission

The General Assembly meets annually and is responsible for enactment of laws, formation of state policy and evaluation of programs through the appropriation process.

Agency Description

The Rhode Island Legislature, the General Assembly, consists of two chambers. The Senate is composed of 38 members. The House of Representatives is composed of 75 members. The Office of the Speaker of the House, President of the Senate Staff, the Joint Committee on Legislative Affairs, the Legislative Council, the Fiscal Advisory Staff, the Office of the Auditor General, the Legislative Press Bureau, State Government Internship Office, the Law Revision Office, the Research and Proofing Offices, and the Special Legislative Commissions assist the General Assembly in executing its constitutional role.

Statutory History

The Legislature is one of the three branches of government authorized in the Rhode Island Constitution. Article VI establishes the powers of the Legislature, and Articles VII and VIII define the composition of the House of Representatives and the Senate.

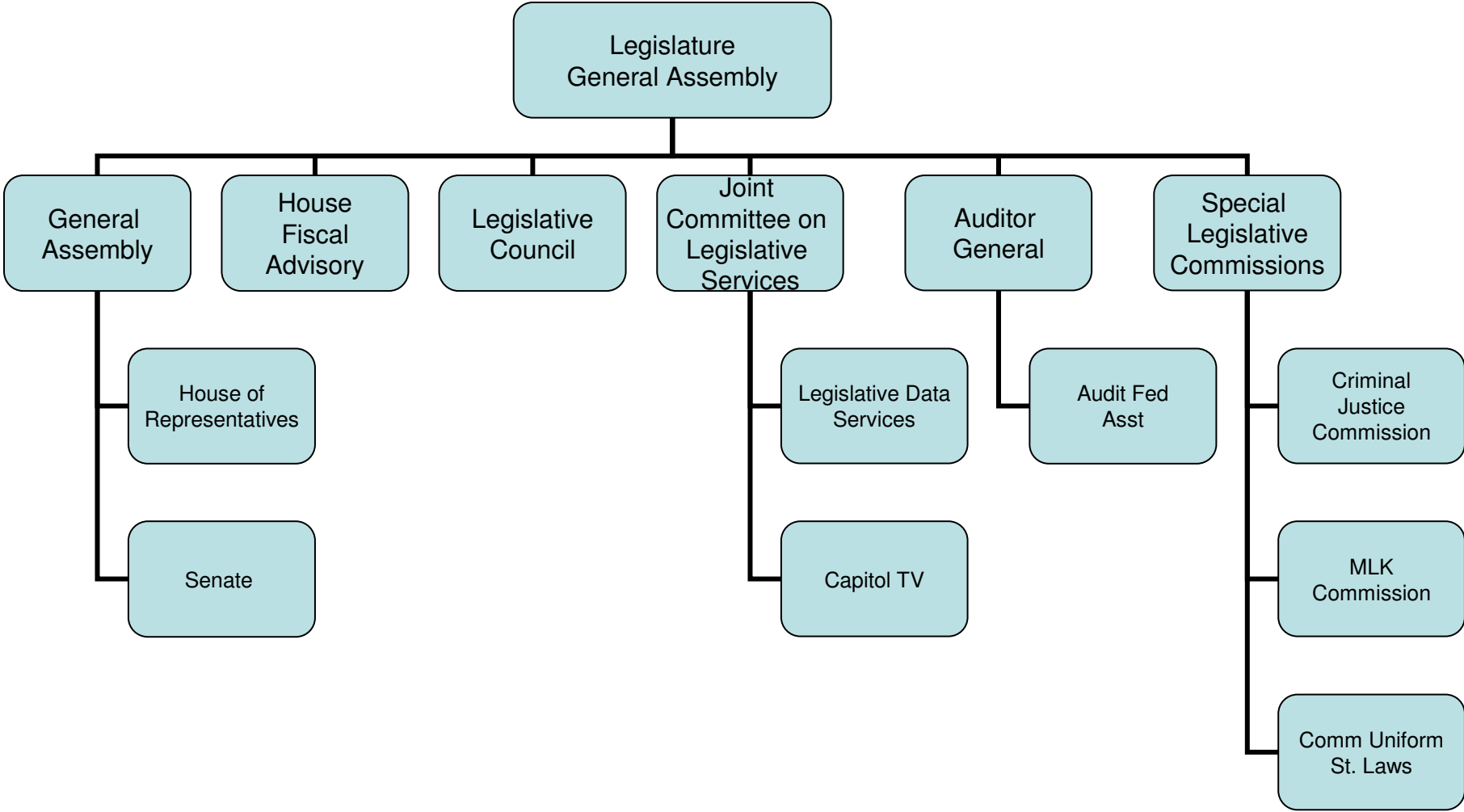
Budget

General Assembly - Constitution

	FY 2011 Audited	FY 2012 Audited	FY 2013 Enacted	FY 2013 Revised	FY 2014 Recommend
Expenditures By Program					
General Assembly	6,291,076	5,877,913	5,131,717	6,728,645	5,367,686
Fiscal Advisory Staff	1,417,350	1,448,633	1,678,830	1,682,519	1,712,414
Legislative Council	4,161,495	4,145,419	5,051,932	4,595,862	4,692,327
Joint Comm. on Legislative Services	18,191,934	19,182,885	21,642,507	23,834,819	21,493,079
Auditor General	4,634,006	4,664,711	5,325,332	5,058,071	5,312,142
Special Legislative Commissions	7,247	7,578	13,900	13,900	13,900
Total Expenditures	\$34,703,108	\$35,327,139	\$38,844,218	\$41,913,816	\$38,591,548
Expenditures By Object					
Personnel	30,979,804	31,132,265	33,572,328	32,600,982	33,239,528
Operating Supplies and Expenses	2,055,077	2,292,116	2,616,390	3,640,834	2,782,520
Assistance and Grants	1,548,292	1,601,950	2,300,000	2,300,000	2,300,000
Subtotal: Operating Expenditures	34,583,173	35,026,331	38,488,718	38,541,816	38,322,048
Capital Purchases and Equipment	119,935	300,808	355,500	3,372,000	269,500
Total Expenditures	\$34,703,108	\$35,327,139	\$38,844,218	\$41,913,816	\$38,591,548
Expenditures By Funds					
General Revenue	33,127,794	33,685,084	37,217,044	40,388,233	36,986,933
Restricted Receipts	1,575,314	1,642,055	1,627,174	1,525,583	1,604,615
Total Expenditures	\$34,703,108	\$35,327,139	\$38,844,218	\$41,913,816	\$38,591,548
FTE Authorization	298.5	298.5	298.5	298.5	298.5

The Agency

Legislature General Assembly



Personnel

General Assembly - Constitution Agency Summary

	Grade	FY 2013		FY 2014	
		FTE	Cost	FTE	Cost
Unclassified		298.5	19,181,111	298.5	19,774,119
Subtotal		298.5	\$19,181,111	298.5	\$19,774,119
Merit Increases - Auditor General		-	20,000	-	40,000
Temporary and Seasonal		-	373,197	-	373,220
Turnover		-	-	-	(\$451,759)
Subtotal		-	\$393,197	-	(\$38,539)
Total Salaries		298.5	\$19,574,308	298.5	\$19,735,580
Benefits					
Payroll Accrual			124,150		129,069
FICA			1,475,825		1,488,791
Retiree Health			1,204,120		1,346,301
Health Benefits			4,491,985		4,996,250
Retirement			3,893,203		4,239,598
Subtotal			\$11,189,283		\$12,200,009
Total Salaries and Benefits		298.5	\$30,763,591	298.5	\$31,935,589
Cost Per FTE Position (excluding Statewide Benefit Assessment)			\$103,064		\$106,990
Statewide Benefit Assessment			\$720,041		\$726,089
Payroll Costs		298.5	\$31,483,632	298.5	\$32,661,678
Purchased Services					
Buildings and Ground Maintenance			6,500		3,500
Legal Services			485,000		275,000
Other Contracts			1,850		1,850
Information Technology			112,000		122,000
Clerical and Temporary Services			41,000		40,000
Management & Consultant Services			471,000		135,500
Subtotal			\$1,117,350		\$577,850
Total Personnel		298.5	\$32,600,982	298.5	\$33,239,528
Distribution By Source Of Funds					
General Revenue		298.5	\$31,220,694	298.5	\$31,788,207
Restricted Receipts		-	\$1,380,288	-	\$1,451,321
Total All Funds		298.5	\$32,600,982	298.5	\$33,239,528

The Program

General Assembly - Constitution General Assembly

Program Mission

The General Assembly meets annually and is responsible for the enactment of laws, the formation of basic state policy, and the evaluation of existing programs through the appropriation process.

Program Description

The General Assembly consists of two chambers. The Senate is composed of 38 members. The House of Representatives is composed of 75 members.

Statutory History

The legislative power of the State is vested in the Legislature as set forth in Article VI of the State Constitution, and the composition of the General Assembly is established in Articles VII and VIII of the State Constitution.

The Budget

General Assembly - Constitution General Assembly

	2011 Audited	2012 Audited	2013 Enacted	2013 Revised	2014 Recommend
Expenditures By Subprogram					
Operations	6,291,076	5,877,913	5,131,717	6,728,645	5,367,686
Total Expenditures	\$6,291,076	\$5,877,913	\$5,131,717	\$6,728,645	\$5,367,686
Expenditures By Object					
Personnel	5,168,302	4,695,524	3,786,417	4,282,545	4,020,039
Operating Supplies and Expenses	1,103,200	1,126,576	1,249,800	1,529,100	1,287,147
Subtotal: Operating Expenditures	6,271,502	5,822,100	5,036,217	5,811,645	5,307,186
Capital Purchases and Equipment	19,574	55,813	95,500	917,000	60,500
Total Expenditures	\$6,291,076	\$5,877,913	\$5,131,717	\$6,728,645	\$5,367,686
Expenditures By Funds					
General Revenue	6,291,076	5,877,913	5,131,717	6,728,645	5,367,686
Total Expenditures	\$6,291,076	\$5,877,913	\$5,131,717	\$6,728,645	\$5,367,686

Personnel

General Assembly - Constitution

General Assembly

	Grade	FY 2013		FY 2014	
		FTE	Cost	FTE	Cost
Unclassified					
REPRESENTATIVE	00509F	-	1,058,287	-	1,115,846
REPRESENTATIVE SPEAKER OF HOUS	00511F	-	29,280	-	30,158
SENATOR	00509F	-	531,501	-	557,923
SENATOR-PRESIDENT OF THE SENAT	00511F	-	29,280	-	30,158
Subtotal		-	\$1,648,348	-	\$1,734,085
Temporary and Seasonal		-	373,197	-	373,220
Subtotal		-	\$373,197	-	\$373,220
Total Salaries		-	\$2,021,545	-	\$2,107,305
Benefits					
Payroll Accrual			13,637		14,466
FICA			149,237		155,798
Health Benefits			1,155,613		1,246,741
Subtotal			\$1,318,487		\$1,417,005
Total Salaries and Benefits		-	\$3,340,032	-	\$3,524,310
Cost Per FTE Position (excluding Statewide Benefit Assessment)			-		-
Statewide Benefit Assessment			\$61,813		\$65,029
Payroll Costs		-	\$3,401,845	-	\$3,589,339
Purchased Services					
Clerical and Temporary Services			40,500		39,500
Management & Consultant Services			419,000		120,000
Legal Services			420,000		270,000
Other Contracts			1,200		1,200
Subtotal			\$880,700		\$430,700
Total Personnel		-	\$4,282,545	-	\$4,020,039
Distribution By Source Of Funds					
General Revenue		-	\$4,282,545	-	\$4,020,039
Total All Funds		-	\$4,282,545	-	\$4,020,039

The Program

General Assembly - Constitution Fiscal Advisory Staff

Program Mission

Perform fiscal research and analysis for the Legislature, its committees, and individual legislators.

Program Description

The Fiscal Advisory Staff to the House Finance Committee and to the Legislature operates under the supervision of the House Finance Committee. Duties include examination of revenues, review of appropriations and expenditures, and analysis of the State's indebtedness and Capital Improvement Program. The House Fiscal Advisor serves as one of three principals on the Revenue Consensus Forecasting and the Medical and Public Assistance Caseload Estimating Conferences.

Statutory History

The Fiscal Advisory Staff to the House Finance Committee was established as a separate agency in 1959. Statutory provisions for the Fiscal Advisory Staff to the House Finance Committee are contained in R.I.G.L. 22-6.

The Budget

General Assembly - Constitution Fiscal Advisory Staff

	2011 Audited	2012 Audited	2013 Enacted	2013 Revised	2014 Recommend
Expenditures By Subprogram					
Operations	1,417,350	1,448,633	1,678,830	1,682,519	1,712,414
Total Expenditures	\$1,417,350	\$1,448,633	\$1,678,830	\$1,682,519	\$1,712,414
Expenditures By Object					
Personnel	1,340,131	1,382,929	1,557,480	1,564,169	1,598,934
Operating Supplies and Expenses	67,289	63,082	106,350	103,350	101,480
Subtotal: Operating Expenditures	1,407,420	1,446,011	1,663,830	1,667,519	1,700,414
Capital Purchases and Equipment	9,930	2,622	15,000	15,000	12,000
Total Expenditures	\$1,417,350	\$1,448,633	\$1,678,830	\$1,682,519	\$1,712,414
Expenditures By Funds					
General Revenue	1,417,350	1,448,633	1,678,830	1,682,519	1,712,414
Total Expenditures	\$1,417,350	\$1,448,633	\$1,678,830	\$1,682,519	\$1,712,414

Personnel

General Assembly - Constitution Fiscal Advisory Staff

	Grade	FY 2013		FY 2014	
		FTE	Cost	FTE	Cost
Unclassified					
HOUSE FISCAL ADVISOR	07878F	1.0	153,079	1.0	153,079
PRINCIPAL ANALYST II	07749F	1.0	103,628	1.0	103,628
PRINCIPAL ANALYST I	07963F	1.0	99,986	1.0	99,986
SENIOR ANALYST III	07972F	1.0	89,592	1.0	89,592
DEPUTY FISCAL ADVISOR	07967F	1.0	84,467	1.0	112,623
SENIOR ANALYST II	07894F	1.0	81,223	1.0	81,223
LEGISLATIVE BUDGET ANALYST II	07992F	1.0	73,465	1.0	73,465
ANALYST II	07992F	1.0	60,867	1.0	60,867
LEGISLATIVE BUDGET ANALYST II	07735F	1.0	60,867	1.0	60,867
ANALYST I	07904F	1.0	55,211	1.0	55,211
FISCAL ANALYST I	07772F	1.0	55,211	1.0	55,211
ADMINISTRATIVE ASSISTANT	07821F	1.0	55,076	1.0	55,076
LEGISLATIVE BUDGET ANALYST I	07735F	1.0	53,605	1.0	53,605
Subtotal		13.0	\$1,026,277	13.0	\$1,054,433
Turnover		-	-	-	(31,633)
Subtotal		-	-	-	(\$31,633)
Total Salaries		13.0	\$1,026,277	13.0	\$1,022,800
Benefits					
Payroll Accrual			6,241		6,396
FICA			76,050		75,858
Retiree Health			70,403		78,113
Health Benefits			119,084		131,429
Retirement			227,629		245,983
Subtotal			\$499,407		\$537,779
Total Salaries and Benefits		13.0	\$1,525,684	13.0	\$1,560,579
Cost Per FTE Position (excluding Statewide Benefit Assessment)			\$117,360		\$120,045
Statewide Benefit Assessment			\$38,485		\$38,355
Payroll Costs		13.0	\$1,564,169	13.0	\$1,598,934
Total Personnel		13.0	\$1,564,169	13.0	\$1,598,934
Distribution By Source Of Funds					
General Revenue		13.0	\$1,564,169	13.0	\$1,598,934
Total All Funds		13.0	\$1,564,169	13.0	\$1,598,934

The Program

General Assembly - Constitution Legislative Council

Program Mission

Legislative Council is the principal research and legal arm of the General Assembly. The Council's staff of attorneys, researchers, secretaries and clerical aides provides legislators with information on matters pending or to come before the Legislature. Legislative Council's principal activity is drafting of legislation for individual members.

Program Description

The Legislative Council has two main functions: bill drafting and research, with separate offices to handle each. The bill-drafting section is ordinarily referred to as Legislative Council. Staffed by a number of attorneys, the Council takes bill-drafting requests and prepares the legislation. Other staff members handle the typing, proofing and duplicating of the bill and its delivery to legislators in the House and Senate chambers.

Statutory History

The Legislative Council was established as a separate agency in 1939. Statutory provisions for the Legislative Council are contained in R.I.G.L. 22-8.

The Budget

General Assembly - Constitution Legislative Council

	2011 Audited	2012 Audited	2013 Enacted	2013 Revised	2014 Recommend
Expenditures By Subprogram					
Operations	4,161,495	4,145,419	5,051,932	4,595,862	4,692,327
Total Expenditures	\$4,161,495	\$4,145,419	\$5,051,932	\$4,595,862	\$4,692,327
Expenditures By Object					
Personnel	4,101,858	4,100,591	4,965,152	4,503,382	4,596,577
Operating Supplies and Expenses	59,637	44,828	75,280	80,980	84,250
Subtotal: Operating Expenditures	4,161,495	4,145,419	5,040,432	4,584,362	4,680,827
Capital Purchases and Equipment	-	-	11,500	11,500	11,500
Total Expenditures	\$4,161,495	\$4,145,419	\$5,051,932	\$4,595,862	\$4,692,327
Expenditures By Funds					
General Revenue	4,161,495	4,145,419	5,051,932	4,595,862	4,692,327
Total Expenditures	\$4,161,495	\$4,145,419	\$5,051,932	\$4,595,862	\$4,692,327

Personnel

General Assembly - Constitution Legislative Council

	Grade	FY 2013		FY 2014	
		FTE	Cost	FTE	Cost
Unclassified					
DIRECTOR (LEGISLATIVE COUNCIL)	00752F	1.0	116,891	1.0	116,891
CHIEF ASST TO DIRECTOR	00991F	1.0	115,693	1.0	115,693
LEGISLATIVE LEGAL COUNSEL	00792F	0.6	62,232	0.6	62,232
LEGAL COUNSEL	07818H	0.6	61,364	0.6	61,364
LEGAL COUNSEL	00875F	0.6	60,950	0.6	60,950
DIR LEG RESEARCH/SR POL ADV	07963F	1.0	99,986	1.0	99,986
LEGAL COUNSEL	07738F	0.6	59,893	0.6	59,893
LEGAL COUNSEL	07774A	0.6	52,432	0.6	52,432
LAW CLERK	00822F	0.6	51,691	0.6	51,691
LEGAL COUNSEL	00788F	0.6	50,682	0.6	50,682
LEGAL COUNSEL (LEGISLATIVE COU	07880F	1.0	82,882	1.0	82,882
LEGAL COUNSEL	00822F	0.6	49,341	0.6	49,341
LEGAL COUNSEL	07765F	0.6	48,610	0.6	48,610
LEGAL COUNSEL	07726F	0.6	45,533	0.6	45,533
LEGISLATIVE COORDINATOR	07728F	1.0	69,315	1.0	69,315
RESEARCHER II	07978F	1.0	58,832	1.0	58,832
LEGAL COUNSEL	07734F	1.6	88,353	1.6	104,714
LEGAL COUNSEL	07739F	0.6	33,028	0.6	33,028
LEGISLATIVE COUNSEL	00757F	0.6	33,028	0.6	33,028
LEGAL COUNSEL	07962F	0.6	32,527	0.6	32,527
CLERICAL (LEGISLATIVE COUNCIL)	00881F	1.0	53,419	1.0	53,419
CLERICAL (LEGISLATIVE COUNCIL)	00805H	1.0	51,233	1.0	51,233
LEGISLATIVE AIDE	07922F	1.0	51,167	1.0	51,167
CLERICAL	00811F	1.0	50,152	1.0	50,152
CONSTITUENT LIAISON	07976F	1.0	49,393	1.0	49,393
LEGAL COUNSEL	07734F	1.0	49,080	1.0	65,446
LEGISLATIVE LEGAL COUNSEL	00903F	0.6	28,538	0.6	28,538
LEGAL COUNSEL	07706F	0.6	28,454	0.6	28,454
LEGAL COUNSEL - PT	07814F	1.2	55,586	1.2	74,114
CLERICAL (LEGISLATIVE COUNCIL)	00764F	1.0	45,980	1.0	45,980
LEGISLATIVE AIDE	07921F	1.0	45,857	1.0	45,857
SECRETARY	00921F	1.0	45,857	1.0	45,857
LEGISLATIVE AIDE	07848H	0.6	27,256	0.6	27,256
SECRETARY	07773F	1.0	43,587	1.0	43,587
CLERICAL	00816F	1.0	42,396	1.0	42,396
LEGISLATIVE AIDE	00839H	1.0	41,922	1.0	41,922
CLERICAL(LEGISLATIVE COUNCIL)	00917F	1.0	41,148	1.0	41,148
LEGISLATIVE AIDE	07895F	1.0	41,055	1.0	41,055
CLERICAL (LEGISLATIVE COUN)	00814F	1.0	40,763	1.0	40,763
LEGAL COUNSEL	07961F	0.6	22,929	0.6	22,929
LEGISLATIVE AIDE	00877H	1.0	38,086	1.0	38,086
PROOFREADER	07938F	1.0	38,001	1.0	38,001
SECRETARY	00933F	1.0	37,854	1.0	37,854
LEGAL COUNSEL	07819F	0.6	22,640	0.6	22,640
LEGISLATIVE RESEARCHER	07907F	1.0	36,686	1.0	36,686

Personnel

General Assembly - Constitution Legislative Council

	Grade	FY 2013		FY 2014	
		FTE	Cost	FTE	Cost
LEGAL COUNSEL	07777F	0.6	21,947	0.6	21,947
LEGAL COUNSEL	07777F	0.6	21,946	0.6	21,946
SECRETARY	07854F	1.0	36,171	1.0	48,228
LEGISLATIVE AIDE (LEG COUNCIL)	07933F	1.0	36,134	1.0	36,134
LEGAL COUNSEL	07983F	0.6	20,588	0.6	20,588
SECRETARY	07928F	2.0	66,815	2.0	76,360
SENIOR PROOFREADER	07923F	1.0	30,360	1.0	30,360
PROOFER	00717F	0.5	14,412	0.5	14,412
PROOFER	00717F	1.5	43,236	1.5	43,236
CLERICAL (LEGISLATIVE COUNCIL)	07984F	1.0	27,139	1.0	36,185
CLERICAL (LEGISLATIVE COUNCIL)	07869F	1.6	39,586	1.6	46,605
Subtotal		50.0	\$2,660,636	50.0	\$2,749,558
Turnover		-	-	-	(82,490)
Subtotal		-	-	-	(\$82,490)
Total Salaries		50.0	\$2,660,636	50.0	\$2,667,068
Benefits					
Payroll Accrual			17,775		18,456
FICA			203,180		203,682
Retiree Health			182,520		203,688
Health Benefits			683,868		756,738
Retirement			590,129		641,430
Subtotal			\$1,677,472		\$1,823,994
Total Salaries and Benefits		50.0	\$4,338,108	50.0	\$4,491,062
Cost Per FTE Position (excluding Statewide Benefit Assessment)			\$86,762		\$89,821
Statewide Benefit Assessment			\$99,774		\$100,015
Payroll Costs		50.0	\$4,437,882	50.0	\$4,591,077
Purchased Services					
Clerical and Temporary Services			500		500
Legal Services			65,000		5,000
Subtotal			\$65,500		\$5,500
Total Personnel		50.0	\$4,503,382	50.0	\$4,596,577
Distribution By Source Of Funds					
General Revenue		50.0	\$4,503,382	50.0	\$4,596,577
Total All Funds		50.0	\$4,503,382	50.0	\$4,596,577

The Program

General Assembly - Constitution Joint Comm. on Legislative Services

Program Mission

The Joint Committee on Legislative Services (JCLS) is responsible for all administrative matters affecting the operations of the General Assembly. The Office also coordinates the Legislative Data Services and Telecommunications - Cable TV activities.

Program Description

Under the direction of the Joint Committee on Legislative Services, the JCLS Administrative Office is responsible for the overall day-to-day operations of the General Assembly. Matters pertaining to personnel, payroll and benefits, operations, purchasing and accounts payable are handled through this office. The JCLS Office prepares and submits the annual budget and oversees the finances of the Legislature. The operations staff is responsible for the purchasing function, the upkeep and maintenance of the legislative offices in the State House, the disbursement of supplies to the various offices of the JCLS, and is responsible for repairs to equipment and furnishings of the Legislature. All payables of the Legislature are processed by utilizing the State's RIFANS financial system.

Statutory History

The Joint Committee on Legislative Affairs was established as a separate agency in 1960. Statutory provisions for the Joint Committee on Legislative Affairs are contained in R.I.G.L. 22-11.

The Budget

General Assembly - Constitution Joint Comm. on Legislative Services

	2011 Audited	2012 Audited	2013 Enacted	2013 Revised	2014 Recommend
Expenditures By Subprogram					
Operations	18,191,934	19,182,885	21,642,507	23,834,819	21,493,079
Total Expenditures	\$18,191,934	\$19,182,885	\$21,642,507	\$23,834,819	\$21,493,079
Expenditures By Object					
Personnel	16,174,677	16,699,843	18,413,897	17,666,259	18,202,569
Operating Supplies and Expenses	392,541	647,909	715,110	1,460,060	825,010
Assistance and Grants	1,548,292	1,601,950	2,300,000	2,300,000	2,300,000
Subtotal: Operating Expenditures	18,115,510	18,949,702	21,429,007	21,426,319	21,327,579
Capital Purchases and Equipment	76,424	233,183	213,500	2,408,500	165,500
Total Expenditures	\$18,191,934	\$19,182,885	\$21,642,507	\$23,834,819	\$21,493,079
Expenditures By Funds					
General Revenue	18,191,934	19,182,885	21,642,507	23,834,819	21,493,079
Total Expenditures	\$18,191,934	\$19,182,885	\$21,642,507	\$23,834,819	\$21,493,079

Personnel

General Assembly - Constitution Joint Comm. on Legislative Services

	Grade	FY 2013		FY 2014	
		FTE	Cost	FTE	Cost
Unclassified					
CHIEF OF STAFF	07834F	1.0	167,876	1.0	167,876
CHIEF OF STAFF	07834F	1.0	160,882	1.0	160,882
LEGAL COUNSEL TO THE SEN PRES.	07703F	1.0	146,937	1.0	146,937
SENATE FISCAL ADVISOR	07762F	1.0	107,352	1.0	143,136
DEP CHF OF STAFF/DIR OF POLICY	07823F	1.0	140,050	1.0	140,050
CHIEF LEGAL COUNSEL	07999F	1.0	100,720	1.0	134,293
LEGAL COUNSEL	07711F	1.0	125,775	1.0	125,775
SENIOR POLICY ANALYST	07979F	1.0	118,011	1.0	118,011
LEGAL COUNSEL	00736F	0.6	69,875	0.6	69,875
LEGAL COUNSEL FOR THE SPEAKER	07711F	0.6	68,605	0.6	68,605
EXECUTIVE DIRECTOR TO JCLS	07909F	1.0	112,623	1.0	112,623
HOUSE DIR OF COMMUNICATIONS	07731F	1.0	111,692	1.0	111,692
LEGAL COUNSEL	00731F	0.6	64,916	0.6	64,916
DEP CHIEF OF STAFF/LEGISLATION	07752F	1.0	107,150	1.0	107,150
DIRECTOR OF HOUSE POLICY	07963F	1.0	99,986	1.0	99,986
DIRECTOR OF IT	07898F	1.0	99,896	1.0	99,896
DEPUTY FISCAL ADVISOR	07967F	1.0	97,386	1.0	97,386
SECRETARY OF THE SENATE	07743F	1.0	95,437	1.0	95,437
SENATE PARLIAMENTARIAN	00993F	0.6	56,242	0.6	56,242
EXECUTIVE DIRECTOR	00940F	1.0	93,682	1.0	93,682
DEPUTY DIRECTOR IT	07854F	1.0	92,648	1.0	92,648
SENIOR LEGAL COUNSEL	07906F	1.0	92,399	1.0	92,399
DEPUTY CHIEF OF STAFF	07792F	1.0	90,755	1.0	90,755
DIRECTOR OF LAW REVISION		1.0	88,346	1.0	88,436
SPEC ASST TO MAJORITY LEADER	07701F	1.0	88,112	1.0	88,112
HOUSE READING CLERK	07820F	0.9	75,086	0.9	75,086
LEGISLATIVE PERSONNEL ADMIN	07822F	1.0	86,347	1.0	86,347
SENIOR FINANCIAL OFFICER	07894F	1.0	86,321	1.0	86,321
EXECUTIVE ASSISTANT	07721F	1.0	84,824	1.0	84,824
CHIEF OF STAFF	07916F	1.0	83,347	1.0	83,347
ADMINISTRATIVE ASSISTANT	07721F	1.0	83,057	1.0	83,057
SUPERVISOR LEGISLATIVE PRESS	00797F	1.0	82,749	1.0	82,749
HOUSE PARLIAMENTARIAN-LEG COUN	07768F	0.6	49,019	0.6	49,019
ADMINISTRATIVE ASSISTANT	07997F	1.0	81,222	1.0	81,222
EXECUTIVE ASSISTANT	07783F	1.0	80,543	1.0	80,543
DIRECTOR OF CAPITOL TV	07716F	1.0	80,274	1.0	80,274
DIRECTOR OF CONSTITNENT SERVIC	00915F	1.0	79,609	1.0	79,609
SR DATA/ SYSTEM SPECIALIST	07997F	1.0	79,530	1.0	79,530
ASST DIRECTOR OF LAW REVISION	07915F	0.7	54,589	0.7	54,589
SR LEGISLATIVE FISCAL ANLAYST	00799F	1.0	78,923	1.0	78,923
ADMINISTRATIVE ASSISTANT	07716F	1.0	78,566	1.0	78,566
SUPERVISING SVS ADMINISTRATOR	07896F	1.0	76,111	1.0	76,111
LEGAL COUNSEL	07916F	0.6	45,643	0.6	45,643
SUPERVISING AUDITOR	07771F	1.0	56,502	1.0	75,336
DEPUTY DIRECTOR OF POLICY	07768F	1.0	74,594	1.0	74,594

Personnel

General Assembly - Constitution Joint Comm. on Legislative Services

	Grade	FY 2013		FY 2014	
		FTE	Cost	FTE	Cost
DIRECTOR OF COMMUNICATIONS	07721F	1.0	74,221	1.0	74,221
CONSTITUENT LIAISON	07738F	1.0	73,763	1.0	73,763
CLERK-HOUSE FINANCE	07747F	1.0	72,426	1.0	72,426
EXECUTIVE ASSISTANT	07734F	1.0	71,991	1.0	71,991
PROGRAM COORDINATOR	07721F	1.0	70,687	1.0	70,687
LEGISLATIVE GRANTS COORDINATOR	00865F	1.0	70,413	1.0	70,413
LEGAL COUNSEL/SPECIAL PROJECTS	07911F	1.0	70,207	1.0	70,207
TELEVISION MAINTENANCE ENGINEE	07911F	1.0	52,655	1.0	70,207
SR. PRODUCER/DIRECTOR	07729F	1.0	70,145	1.0	70,145
CHIEF OF STAFF	00871F	1.0	70,087	1.0	70,087
DPTY DIR OF CONSTITUENT SERVIC	07916F	1.0	69,456	1.0	69,456
LEGAL COUNSEL	07734F	0.6	41,231	0.6	41,231
IT TECHNICAL SPECIALIST II	07710F	1.0	68,627	1.0	68,627
ASSISTANT TO ADMINISTRATOR	07747F	1.0	67,803	1.0	67,803
HOUSE RECORDING CLERK	00807F	0.6	40,529	0.6	40,529
FISCAL ANALYST II	07893F	0.6	39,928	0.6	39,928
POLICY ANALYST II	07893F	1.0	66,546	1.0	66,546
LEGISLATIVE FISCAL ANALYST II	07738F	1.0	64,885	1.0	64,885
DIRECTOR OF SENATE SERVICES	07826F	1.0	64,289	1.0	64,289
IT TECHNICAL SPECIALIST II	07871F	1.0	64,247	1.0	64,247
SECRETARY	00925F	1.0	63,746	1.0	63,746
OPERATIONS SUPERVISOR	07864F	1.0	61,765	1.0	61,765
COMPUTER OPERATOR	00942F	0.6	36,379	0.6	36,379
DIRECTOR OF COMMUNICATIONS	07863F	1.0	60,451	1.0	60,451
SENIOR POLICY ANALYST	07804F	1.0	60,247	1.0	60,247
SUPERVISOR OF OPERATIONS	07936F	1.0	44,131	1.0	58,841
SECRETARY	07994F	1.0	58,217	1.0	58,217
PRESS ROOM FOREPERSON	00882F	1.0	57,946	1.0	57,946
SENIOR DATA ANALYST	07951F	1.0	57,913	1.0	57,913
SUPERVISOR VET'S AFFAIRS OFFI	07908F	1.0	57,607	1.0	57,607
POLICY ANALYST I	00868H	0.6	34,309	0.6	34,309
SENIOR RESEARCH ANALYST	07880F	1.0	41,812	1.0	55,750
LEGISLATIVE ASSISTANT	00994F	1.0	55,462	1.0	55,462
POLICY/RESEARCH ASSISTANT	07897F	1.0	41,570	1.0	55,426
LEGISLATIVE AIDE	00876F	1.0	55,027	1.0	55,027
POLICY ANALYST	07818F	1.0	54,738	1.0	54,738
SECRETARY	07955F	1.0	54,627	1.0	54,627
LEGISLATIVE ASSISTANT	00755F	0.6	32,754	0.6	32,754
LEGAL COUNSEL	07886F	0.6	32,751	0.6	32,751
LEGAL COORDINATOR	00709F	1.0	54,249	1.0	54,249
SECRETARY	07857F	1.0	54,163	1.0	54,163
LEGISLATIVE ASSISTANT	07790F	1.0	54,080	1.0	54,080
SECRETARY	00827H	1.0	53,775	1.0	53,775
POLICY ANALYST II	07735F	1.0	53,605	1.0	53,605
PUBLICIST	00930F	1.0	53,532	1.0	53,532
SENIOR PRESS OPERATOR	00891F	1.0	53,481	1.0	53,481

Personnel

General Assembly - Constitution Joint Comm. on Legislative Services

	Grade	FY 2013		FY 2014	
		FTE	Cost	FTE	Cost
LEGISLATIVE ASSISTANT	07847F	1.0	52,926	1.0	52,926
FISCAL ANALYST I	07772F	1.0	52,708	1.0	52,708
LEGISLATIVE FISCAL ANALYST I	07772F	1.0	52,708	1.0	52,708
LEGISLATIVE PROJECT COORDINATO	07863F	1.0	39,408	1.0	52,544
HOUSE FINANCE POLICY ASSISTANT	00876F	1.0	39,305	1.0	52,407
LEGISLATIVE ASSISTANT	00937F	1.0	52,407	1.0	52,407
LEGISLATIVE COORDINATOR	00937F	1.0	52,407	1.0	52,407
SECRETARY	00794F	1.0	51,806	1.0	51,806
ASSISTANT COMPUTER OPERATOR	07951F	1.0	51,752	1.0	51,752
LEGISLATIVE ASSISTANT	00976F	1.0	51,745	1.0	51,745
HOUSE OPERATIONS SENIOR STAFFE	07942F	1.0	38,702	1.0	51,602
LEGISLATIVE COORDINATOR	07922F	1.0	51,166	1.0	51,166
T. V. TECHNICIAN II	00730F	1.0	50,921	1.0	50,921
ADMINISTRATIVE ASSISTANT	00973F	1.0	50,888	1.0	50,888
PUBLICIST	07994F	1.0	50,639	1.0	50,639
ADMINISTRATIVE ASSISTANT	00799F	1.0	50,449	1.0	50,449
ADMINISTRATIVE ASSISTANT	07821F	1.0	37,552	1.0	50,069
POLICY AIDE	00937F	1.0	37,433	1.0	49,911
CONSTITUENT SVS CASEWORKER	00946F	1.0	49,482	1.0	49,482
SECRETARY	00902F	1.0	49,278	1.0	49,278
TV TECHNICIAN II	00944F	1.0	49,265	1.0	49,265
ADMINISTRATIVE ASSISTANT	07922F	1.0	48,841	1.0	48,841
CONSTITUENT LIAISON	00973F	1.0	48,575	1.0	48,575
CONSTITUENT LIAISON	07812F	2.0	86,484	2.0	97,110
CLERICAL	00920F	1.0	48,315	1.0	48,315
ADMINISTRATIVE ASSISTANT	07949H	0.8	38,576	0.8	38,576
DATA ANALYST	00786F	1.0	48,070	1.0	48,070
DATA ANALYST	07824F	1.0	48,008	1.0	48,008
CONSTITUENT SERVICES LIAISON	07887F	0.6	28,080	0.6	28,080
CONSTITUENT SERVICES LIAISON	07887F	1.2	56,160	1.2	56,160
LEGISLATIVE AIDE	00932F	1.0	46,630	1.0	46,630
TV DIRECTOR	00990F	1.0	46,529	1.0	46,529
ADMINISTRATIVE AIDE/CLERK	07922F	1.0	46,515	1.0	46,515
ASST FINANCIAL OFFICER	07922F	1.0	46,515	1.0	46,515
SECRETARY/CLERK	07802F	1.0	46,514	1.0	46,514
PRESS OPERATOR	00782F	3.0	137,751	3.0	137,751
LEGAL COUNSEL	07843F	0.6	27,455	0.6	27,455
T. V. TECHNICIAN	07819F	1.0	45,563	1.0	45,563
ADMINISTRATION ASSISTANT	07779F	1.0	45,287	1.0	45,287
SENATE SERVICES ASSISTANT	07892F	1.0	45,006	1.0	45,006
COORDINATOR	07789F	1.0	44,843	1.0	44,843
T. V. TECHNICIAN	07789F	1.0	44,843	1.0	44,843
SECRETARY	00713F	1.0	44,330	1.0	44,330
POLICY ANALYST	07897F	2.0	78,511	2.0	87,886
CLERK- LABOR COMMITTEE	07974F	0.6	26,302	0.6	26,302
TV TECHNICIAN	07773F	1.0	43,587	1.0	43,587

Personnel

General Assembly - Constitution Joint Comm. on Legislative Services

	Grade	FY 2013		FY 2014	
		FTE	Cost	FTE	Cost
SPECIAL PROJECT COORDINATOR	07819F	0.6	26,036	0.6	26,036
SECRETARY	07764F	2.0	76,395	2.0	86,533
LEGAL COUNSEL	07859F	0.6	25,746	0.6	25,746
LEGISLATIVE PROJECT COORDINATO	07766F	1.0	42,842	1.0	42,842
LEGISLATIVE ASSISTANT	07913F	2.0	74,577	2.0	85,304
LEGISLATIVE PROJECT COORDINATO	07853F	1.0	42,602	1.0	42,602
LEGISLATIVE AIDE	07913F	1.0	42,395	1.0	42,395
RESEARCH ASSISTANT	07719F	1.0	42,310	1.0	42,310
TV TECHNICIAN II	00924F	1.0	41,433	1.0	41,433
LEGISLATIVE ASSISTANT	07858F	2.0	71,498	2.0	82,760
SECRETARY	00883F	1.0	41,177	1.0	41,177
LEGISLATIVE AIDE	00872F	1.0	40,574	1.0	40,574
PUBLICIST	07748F	1.0	40,553	1.0	40,553
LEGISLATIVE ASSISTANT	07801H	0.6	24,231	0.6	24,231
LEGAL COUNSEL -PT	07719F	0.6	24,178	0.6	24,178
LEGISLATIVE AIDE	07782F	1.0	39,928	1.0	39,928
LEGAL COUNSEL	07941F	0.6	23,944	0.6	23,944
LEGISLATIVE AIDE	07958F	1.0	39,374	1.0	39,374
SECRETARY	00808H	1.0	39,347	1.0	39,347
ADMINISTRATIVE ASSISTANT	07760F	1.0	39,305	1.0	39,305
LEGAL COUNSEL	07760F	0.6	23,583	0.6	23,583
LEGISLATIVE ASSISTANT	07758F	1.0	39,176	1.0	39,176
LEGISLATIVE ASSISTANT	07773F	2.0	69,397	2.0	78,000
SECRETARY	07814F	1.0	38,910	1.0	38,910
LEGISLATIVE ASSISTANT	07848H	1.0	28,283	1.0	37,711
LEGISLATIVE AIDE	07712F	1.0	37,184	1.0	37,184
COMPUTER TECHNICIAN	07820H	0.4	15,701	0.4	15,701
TV TECHNICIAN I	00938F	1.0	36,273	1.0	36,273
LEGISLATIVE AIDE	07984F	1.0	36,185	1.0	36,185
SECRETARY	07984F	1.0	36,185	1.0	36,185
SECRETARY/RECEPTIONIST	07984F	0.6	21,711	0.6	21,711
LEGISLATIVE AIDE	00988F	1.0	36,066	1.0	36,066
LEGISLATIVE AIDE	07857F	1.6	49,755	1.6	57,560
LEGISLATIVE AIDE	07807F	1.0	35,187	1.0	35,187
LEGISLATIVE ASSISTANT	07907F	1.0	34,939	1.0	34,939
LEGAL COUNSEL	00874F	0.6	20,704	0.6	20,704
COMMUNICATIONS ASSISTANT	07846F	1.0	34,313	1.0	34,313
SECRETARY	07983F	2.0	58,982	2.0	67,179
SECRETARY	00877F	1.0	33,442	1.0	33,442
LEGISLATIVE AIDE	07926F	0.6	20,049	0.6	20,049
LEGISLATIVE ASSISTANT	07926F	1.0	33,415	1.0	33,415
LEGISLATIVE AIDE	00874F	0.7	23,629	0.7	23,629
CLERICAL	07840H	0.6	19,228	0.6	19,228
LEGISLATIVE AIDE	07945F	1.6	42,887	1.0	51,240
ADMINISTRATIVE AIDE	07917F	1.0	31,978	1.0	31,978
LEGISLATIVE AIDE	07926F	2.0	50,891	2.6	66,484

Personnel

General Assembly - Constitution Joint Comm. on Legislative Services

	Grade	FY 2013		FY 2014	
		FTE	Cost	FTE	Cost
ADMINISTRATIVE AIDE	07984F	1.0	23,396	1.0	31,195
CLERICAL	07875H	1.0	25,345	1.0	25,345
LEGISLATIVE ASSISTANT	07810F	0.6	14,780	0.6	14,780
CAMERA OPERATOR	07810F	2.0	41,050	2.0	46,914
LEGISLATIVE AIDE	07810F	1.0	23,457	1.0	23,457
LEGISLATIVE AIDE	07810F	2.0	46,914	2.0	46,914
Subtotal		190.1	\$10,918,359	190.1	\$11,254,599
Turnover		-	-	-	(337,636)
Subtotal		-	-	-	(\$337,636)
Total Salaries		190.1	\$10,918,359	190.1	\$10,916,963
Benefits					
Payroll Accrual			69,948		72,447
FICA			824,148		824,375
Retiree Health			748,999		833,747
Health Benefits			2,110,175		2,386,123
Retirement			2,421,692		2,625,528
Subtotal			\$6,174,962		\$6,742,220
Total Salaries and Benefits		190.1	\$17,093,321	190.1	\$17,659,183
Cost Per FTE Position (excluding Statewide Benefit Assessment)			\$89,922		\$92,899
Statewide Benefit Assessment			\$409,438		\$409,386
Payroll Costs		190.1	\$17,502,759	190.1	\$18,068,569
Purchased Services					
Information Technology			112,000		122,000
Management & Consultant Services			45,000		8,500
Buildings and Ground Maintenance			6,500		3,500
Subtotal			\$163,500		\$134,000
Total Personnel		190.1	\$17,666,259	190.1	\$18,202,569
Distribution By Source Of Funds					
General Revenue		190.1	\$17,666,259	190.1	\$18,202,569
Total All Funds		190.1	\$17,666,259	190.1	\$18,202,569

The Program

General Assembly - Constitution Auditor General

Program Mission

Provides independent audits, accounting, and evaluation of State Government programs to the General Assembly for its legislative oversight and capability.

Program Description

The Office of the Auditor General assists the General Assembly in reviewing compliance, efficiency, economy, and effectiveness of state programs. The Office of the Auditor General conducts financial and program audits, which encompass the investigation of all matters relating to a review of program costs and the evaluation of program performance; completes the annual post-audit of the receipts and expenditures of the State; and, in accordance with the Single Audit Act of 1984, circular number A-128, issued by the United States Office of Management and Budget, and Chapter 41 of the Rhode Island General Laws, conducts annual audits of federally-funded programs administered by the State.

Statutory History

The Office of the Auditor General was established as a separate agency in 1974. Statutory provisions for the Office of the Auditor General are contained in R.I.G.L. 22-13-1.

The Budget

General Assembly - Constitution Auditor General

	2011 Audited	2012 Audited	2013 Enacted	2013 Revised	2014 Recommend
Expenditures By Subprogram					
Operations	4,634,006	4,664,711	5,325,332	5,058,071	5,312,142
Total Expenditures	\$4,634,006	\$4,664,711	\$5,325,332	\$5,058,071	\$5,312,142
Expenditures By Object					
Personnel	4,194,836	4,253,378	4,849,382	4,584,627	4,821,409
Operating Supplies and Expenses	425,163	402,143	455,950	453,444	470,733
Subtotal: Operating Expenditures	4,619,999	4,655,521	5,305,332	5,038,071	5,292,142
Capital Purchases and Equipment	14,007	9,190	20,000	20,000	20,000
Total Expenditures	\$4,634,006	\$4,664,711	\$5,325,332	\$5,058,071	\$5,312,142
Expenditures By Funds					
General Revenue	3,058,692	3,022,656	3,698,158	3,532,488	3,707,527
Restricted Receipts	1,575,314	1,642,055	1,627,174	1,525,583	1,604,615
Total Expenditures	\$4,634,006	\$4,664,711	\$5,325,332	\$5,058,071	\$5,312,142

Personnel

General Assembly - Constitution

Auditor General

	Grade	FY 2013		FY 2014	
		FTE	Cost	FTE	Cost
Unclassified					
AUDITOR GENERAL	07703F	1.0	150,064	1.0	150,064
SENIOR AUDIT MANAGER	07752F	1.0	112,020	1.0	112,020
SENIOR AUDIT MANAGER	07792F	1.0	108,906	1.0	108,906
SENIOR AUDIT MANAGER	07906F	1.0	105,599	1.0	105,599
AUDIT MANAGER	00985F	1.0	98,680	1.0	98,680
AUDIT MANAGER	07743F	1.0	93,406	1.0	93,406
AUDIT MANAGER	07788F	1.0	90,622	1.0	90,622
LEGAL COUNSEL	00850F	0.6	53,917	0.6	53,917
INFORMATION SYSTEMS AUDIT MGR	07972F	1.0	85,326	1.0	85,326
TRNG DIR/MUNICIPAL TRNG LIAISO	00784F	1.0	81,997	1.0	81,997
ASST INFORMATION SYSTEMS MGR	07997F	1.0	81,222	1.0	81,222
SUPERVISING AUDITOR	07716F	0.8	63,975	0.8	63,975
SUPERVISING AUDITOR	07771F	1.0	79,103	1.0	79,103
SUPERVISING AUDITOR	07833F	1.0	79,063	1.0	79,063
SUPERVISING AUDITOR	07799F	1.0	78,924	1.0	78,924
SUPERVISING AUDITOR	07915F	1.0	75,991	1.0	75,991
PRINCIPAL AUDITOR	07725F	1.0	74,454	1.0	74,454
PRINCIPAL AUDITOR	07982F	1.0	69,439	1.0	69,439
ADMINISTRATIVE OFFICER	07750F	1.0	67,636	1.0	67,636
PRINCIPAL AUDITOR	00787F	1.0	64,533	1.0	64,533
DATA SYSTEMS COORDINATOR	07957F	1.0	63,731	1.0	63,731
PRINCIPAL AUDITOR	07996F	1.0	62,138	1.0	62,138
PRINCIPAL AUDITOR	07747F	2.0	123,278	2.0	123,278
PRINCIPAL AUDITOR	07804F	1.0	60,247	1.0	60,247
SENIOR AUDITOR	00887F	1.0	58,963	1.0	58,963
ASSISTANT DATA SYSTEMS COORD	07976F	1.0	54,097	1.0	54,097
SECRETARY (AUDITOR GEN.)	00756F	1.0	53,749	1.0	53,749
SENIOR AUDITOR	07951F	1.0	51,752	1.0	51,752
PRIN WORD PROCESSING OPERATOR	00706F	1.0	47,423	1.0	47,423
I.T. AUDITOR	07756F	1.0	47,031	1.0	47,031
SENIOR AUDITOR	07824F	1.0	45,722	1.0	45,722
AUDITOR	07892F	1.0	45,005	1.0	45,005
SENIOR AUDITOR	07847F	1.0	44,105	1.0	44,105
AUDITOR	07913F	1.0	42,395	1.0	42,395
AUDITOR	07860F	1.0	41,802	1.0	41,802
AUDITOR	07974F	1.0	41,750	1.0	41,750
AUDITOR	07918F	3.0	121,518	3.0	121,518
AUDITOR	07918F	1.0	40,506	1.0	40,506
AUDITOR	07969F	1.0	39,257	1.0	39,257
ADMINISTRATIVE AIDE	07917F	1.0	37,407	1.0	37,407
ADMINISTRATIVE AIDE	07984F	1.0	36,185	1.0	36,185
SENIOR AUDITOR	07922F	1.0	34,000	1.0	68,000
SENIOR AUDITOR	07794F	1.0	20,553	1.0	40,506
Subtotal		45.4	\$2,927,491	45.4	\$2,981,444

Personnel

General Assembly - Constitution Auditor General

	Grade	FY 2013		FY 2014	
		FTE	Cost	FTE	Cost
Merit Increases - Auditor General		-	20,000	-	40,000
Subtotal		-	\$20,000	-	\$40,000
Total Salaries		45.4	\$2,947,491	45.4	\$3,021,444
Benefits					
Payroll Accrual			16,549		17,304
FICA			223,210		229,078
Retiree Health			202,198		230,753
Health Benefits			423,245		475,219
Retirement			653,753		726,657
Subtotal			\$1,518,955		\$1,679,011
Total Salaries and Benefits		45.4	\$4,466,446	45.4	\$4,700,455
Cost Per FTE Position (excluding Statewide Benefit Assessment)			\$98,380		\$103,534
Statewide Benefit Assessment			\$110,531		\$113,304
Payroll Costs		45.4	\$4,576,977	45.4	\$4,813,759
Purchased Services					
Management & Consultant Services			7,000		7,000
Other Contracts			650		650
Subtotal			\$7,650		\$7,650
Total Personnel		45.4	\$4,584,627	45.4	\$4,821,409
Distribution By Source Of Funds					
General Revenue		45.4	\$3,204,339	45.4	\$3,370,088
Restricted Receipts		-	\$1,380,288	-	\$1,451,321
Total All Funds		45.4	\$4,584,627	45.4	\$4,821,409

The Program

General Assembly - Constitution

Special Legislative Commissions

Program Mission

Special Legislative Commissions include boards and commissions established for the promotion of certain goals and objectives, and to address items of local, regional and national concern.

Program Description

Included in this program are: the Commission on Uniform State Laws, the Criminal Justice Commission, and the Martin Luther King Commission.

Statutory History

Special Legislative Commissions are generally established under the authority granted to the General Assembly in the Rhode Island State Constitution. Specific provisions for various commissions are also established within the Rhode Island General Laws.

The Budget

General Assembly - Constitution Special Legislative Commissions

	2011 Audited	2012 Audited	2013 Enacted	2013 Revised	2014 Recommend
Expenditures By Subprogram					
Operations	7,247	7,578	13,900	13,900	13,900
Total Expenditures	\$7,247	\$7,578	\$13,900	\$13,900	\$13,900
Expenditures By Object					
Operating Supplies and Expenses	7,247	7,578	13,900	13,900	13,900
Subtotal: Operating Expenditures	7,247	7,578	13,900	13,900	13,900
Total Expenditures	\$7,247	\$7,578	\$13,900	\$13,900	\$13,900
Expenditures By Funds					
General Revenue	7,247	7,578	13,900	13,900	13,900
Total Expenditures	\$7,247	\$7,578	\$13,900	\$13,900	\$13,900