

State of Rhode Island and Providence Plantations

Budget



Fiscal Year 2014

Volume III – Education

Lincoln D. Chafee, Governor

Agency

Rhode Island Atomic Energy Commission

Agency Mission

To operate and maintain the facilities at the RINSC, to support projects in all areas and to actively seek commercial projects, and to provide assistance to other state agencies in their radiation and emergency response programs.

Agency Description

The Rhode Island Nuclear Science Center (RINSC) is used for medical, biological, environmental, and materials research, education and commercial activities. The staff runs the Radiation Safety Program for the University of Rhode Island. The Director serves on the State Radiation Advisory Commission and has taken over responsibility for low-level radioactive waste disposal activities.

The center's state-of-the-art analytic laboratories and equipment are currently being used for several environmental monitoring programs sponsored by the Department of Environmental Management, the Narragansett Bay Commission and other agencies. Several years ago, the facility completed a multi-year, \$3 million dollar reactor upgrade program financed through Department of Energy Grants. In 1993, the reactor was converted to a new low enriched uranium fuel system that has greatly reduced security requirements and associated costs while providing a significant improvement in performance. Subsequent grants have resulted in the addition of required mechanical and electronic equipment necessary to substantially increase reactor capability. These improvements will permit the RINSC to compete successfully for production of medical isotopes and will provide the necessary neutron flux to conduct Neutron Capture Therapy that is a promising new method of curing brain cancer and skin cancer. Engineering, design and fabrication work is currently in progress for the construction of a cancer treatment facility and researchers at Brown University, and the RINSC has received a grant to develop new compounds for use at this facility. This multi-year grant supports a collaborative effort with the Massachusetts Institute of Technology (MIT) to develop a successful treatment for one of the most deadly forms of brain cancer.

A laboratory for the development of new radio-pharmaceuticals has been completed by R.I. Consultants. This company recently developed a new method of utilizing radio-isotopes to prevent clogging of the arteries after angioplasty and they are currently developing new products for several research groups. BioPAL Incorporated is making extensive use of the reactor to conduct analysis of medical samples for a variety of treatment and research purposes. They have developed a new method of using medical isotopes that eliminate the dose to patients during diagnostic treatments. SubChem Systems Inc. has just completed a new laboratory building on the South Lab Wing for the development of underwater sensors for weapons of mass destruction. RINSC is located at the University of Rhode Island, Bay Campus, in Narragansett. The center contains a state-of-the-art nuclear counting system, laboratories, a mass spectrometer, a class-100 clean room and facilities for handling and storage of radioactive material. The Rhode Island Nuclear Science Center has operated on a daily basis without incident since 1962.

Statutory History

R.I.G.L. 42-27 establishes the commission for matters relating to nuclear power.

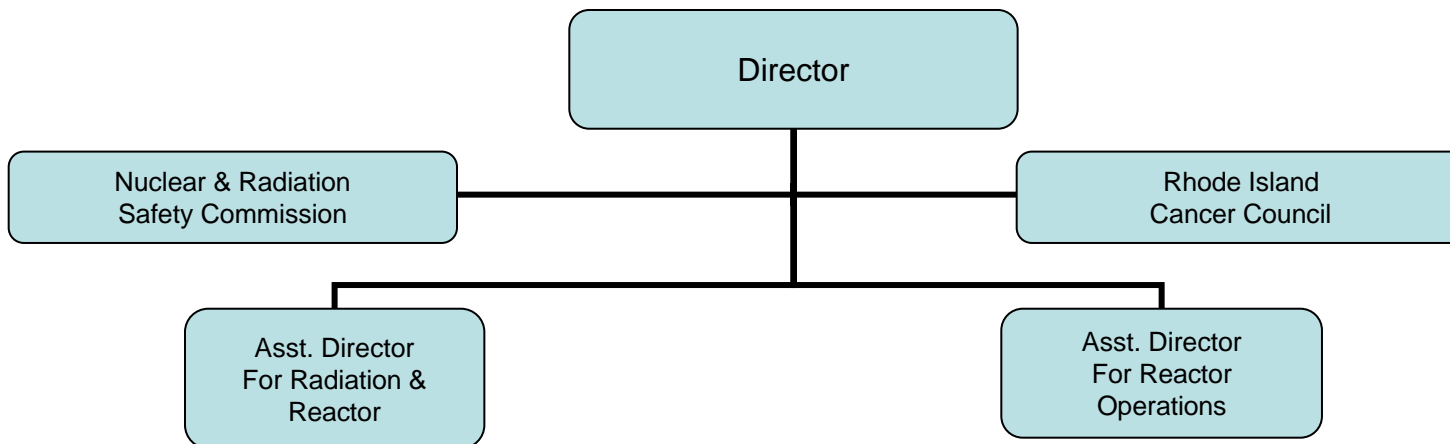
The Budget

Rhode Island Atomic Energy Commission Central Management

	2011 Audited	2012 Audited	2013 Enacted	2013 Revised	2014 Recommend
Expenditures By Subprogram					
Operations	1,198,881	1,282,491	1,476,951	1,427,436	1,436,731
Total Expenditures	\$1,198,881	\$1,282,491	\$1,476,951	\$1,427,436	\$1,436,731
Expenditures By Object					
Personnel	984,443	1,062,475	1,077,315	1,021,848	1,034,819
Operating Supplies and Expenses	175,600	137,703	327,636	311,417	320,912
Subtotal: Operating Expenditures	1,160,043	1,200,178	1,404,951	1,333,265	1,355,731
Capital Purchases and Equipment	38,838	82,313	72,000	94,171	81,000
Total Expenditures	\$1,198,881	\$1,282,491	\$1,476,951	\$1,427,436	\$1,436,731
Expenditures By Funds					
General Revenue	858,629	875,412	876,213	866,750	861,710
Federal Funds	76,635	79,057	267,616	267,044	267,044
Operating Transfers from Other Funds	263,617	328,022	333,122	293,642	307,977
Total Expenditures	\$1,198,881	\$1,282,491	\$1,476,951	\$1,427,436	\$1,436,731

The Agency

Atomic Energy Commission



Personnel

Rhode Island Atomic Energy Commission Central Management

	Grade	FY 2013		FY 2014	
		FTE	Cost	FTE	Cost
Classified					
DIR. R. I. ATOMIC ENERGY COMM	00050A	1.0	160,962	1.0	160,962
ASST DIR FOR OPR NUC SCI CTR	00039A	1.0	99,696	1.0	99,696
ASSISTANT DIRECTOR FOR RADIATION & SR REACTOR FACILITY ENGINEER	00039A	1.0	96,760	1.0	81,527
REACTOR SUPV.NUCLEAR SCI CTR	00032A	1.0	75,122	1.0	75,122
PRIN REACTOR OPERATOR	00028A	1.0	64,821	1.0	68,293
HEALTH PHYSICIST	00030A	1.0	62,468	1.0	62,468
HEALTH PHYSICIST	00030A	1.0	57,910	1.0	57,423
SENIOR CLERK TYPIST	00009A	0.6	22,020	0.6	22,020
Subtotal		7.6	\$639,759	7.6	\$627,511
Unclassified					
INFORMATION SYSTEMS SPECIALIST	00816A	1.0	41,907	1.0	41,907
Subtotal		1.0	\$41,907	1.0	\$41,907
Temporary and Seasonal		-	29,794	-	29,794
Turnover		-	(45,057)	-	(59,629)
Subtotal		-	(\$15,263)	-	(\$29,835)
Total Salaries		8.6	\$666,403	8.6	\$639,583
Benefits					
Payroll Accrual			3,728		3,676
FICA			49,345		47,184
Retiree Health			45,675		49,842
Health Benefits			71,731		100,793
Retirement			147,678		156,951
Subtotal			\$318,157		\$358,446
Total Salaries and Benefits		8.6	\$984,560	8.6	\$998,029
Cost Per FTE Position (excluding Statewide Benefit Assessment)			\$114,484		\$116,050
Statewide Benefit Assessment			\$24,970		\$24,472
Payroll Costs		8.6	\$1,009,530	8.6	\$1,022,501
Purchased Services					
Other Contracts			1,395		1,395
Training and Educational Services			10,923		10,923
Subtotal			\$12,318		\$12,318
Total Personnel		8.6	\$1,021,848	8.6	\$1,034,819
Distribution By Source Of Funds					
General Revenue		6.8	\$830,233	6.8	\$824,693
Federal Funds		-	\$27,428	-	\$27,428
Operating Transfers from Other Funds		1.8	\$164,187	1.8	\$182,698
Total All Funds		8.6	\$1,021,848	8.6	\$1,034,819

Performance Measures

Rhode Island Atomic Energy Commission Central Management

Sample Hours

The figures below represent the number of hours the reactor is used on a per sample basis. [Performance data and targets are provided by State fiscal year. The 2013 Actual figure represents performance data from the first four months of FY 2013 (7/1/12 through 10/31/12).]

	2011	2012	2013	2014
Target	N/A	N/A	3,000	3,200
Actual	2,268	2,644	619	--

Rhode Island Nuclear Science Center (RINSC) Outreach

The RINSC has become a destination for local junior high schools, high schools, and universities. The RINSC also participates in the University of Rhode Island Graduate School of Oceanography's annual day at the bay. Each public tour takes approximately two hours to complete. The figures below represent the number of hours the RINSC staff interact with the public. Outreach hours are calculated by the number of public visitors multiplied by two. [Performance data and targets are provided by State fiscal year. The 2013 Actual figure represents performance data from the first four months of FY 2013 (7/1/12 through 10/31/12).]

	2011	2012	2013	2014
Target	N/A	N/A	800	800
Actual	N/A	653	316	--

Results of Biannual Nuclear Regulatory Commission Inspection

The NRC inspects the facility biannually to ensure compliance with Federal regulations. Any violations cited in the NRC's report along with the severity of the violation are listed. (More information and documentation about NRC's enforcement efforts is available at <http://www.nrc.gov/reading-rm/doc-collections/enforcement/>.)

	2011	2012	2013	2014
Target	N/A	0 violations	N/A	0 violations
Actual	N/A	1 Level IV NCV (Non-cited violation)	N/A	--