

State of Rhode Island and Providence Plantations

# Budget



## Fiscal Year 2014

Volume IV – Public Safety, Natural Resources  
and Transportation

Lincoln D. Chafee, Governor

# Agency

---

## Judicial Department - Constitution

---

### Agency Mission

In our mission to administer justice while maintaining our independence, we are duty bound to act with unflinching honor to serve and protect the ideals of democracy for the citizens of this state.

### Agency Description

Rhode Island has a unified court system composed of six statewide courts. The Supreme Court is the court of last resort, the Superior Court is the court of general jurisdiction, and the Family, District, Traffic Tribunal, and Workers' Compensation Courts are courts of limited jurisdiction.

The entire system in Rhode Island is state-funded with the exception of probate courts, which are the responsibility of cities and towns, and the municipal courts, which are local courts of limited jurisdiction. The Chief Justice of the Supreme Court is the executive head of the Rhode Island Judiciary and has authority over the judicial budget. The Chief Justice appoints the State Court Administrator and an administrative staff to handle budgetary and general administrative functions. Under the direction of the Chief Justice, the State Court Administrator has control of judicial appropriations for all state courts, except those as provided otherwise by law. Each court has responsibility over its own operations and has a chief judge who appoints an administrator to handle internal court management.

The state budget officer's duties and powers relating to budgetary controls and personnel requests of the judicial department are purely ministerial, concerned only with the availability of the funds. Itemized estimates of the financial needs of the Judiciary are submitted, without revision, by the budget officer to the Governor on or before October 1 for inclusion in the budget. In turn the Governor includes in the budget recommendation to the General Assembly the financial needs of the Judiciary without revision.

### Statutory History

The Judicial is one of the three branches of government defined in the Rhode Island Constitution. The powers and jurisdictions of the six courts are identified in the Rhode Island General Laws as follows: Title 8 Chapter 1, Supreme Court; Title 8 Chapter 2, Superior Court; Title 8 Chapter 8, District Court; Title 8 Chapter 10, Family Court; Title 28 Chapter 30, Workers' Compensation Court; and, Title 8 Chapter 8.2, Traffic Tribunal.

The budgetary and finance controls of the Judiciary are identified in the Rhode Island General Laws as follows: Title 8 Section 8-15-4, Appointment of Court Administrator and Assistants; Title 35 Section 35-3-1, Budget Officer – General Powers and Duties; Title 36 Section 36-4-2.1, Exemption from Merit System; Title 36 Section 36-4-16.4, Salaries of Directors, Judges, and Workers' Compensation Judges; Title 36 Section 36-6-1, Controller – Duties in General; and Title 37 Section 37-8-1, State House – State Office Building – Courthouses.

# Budget

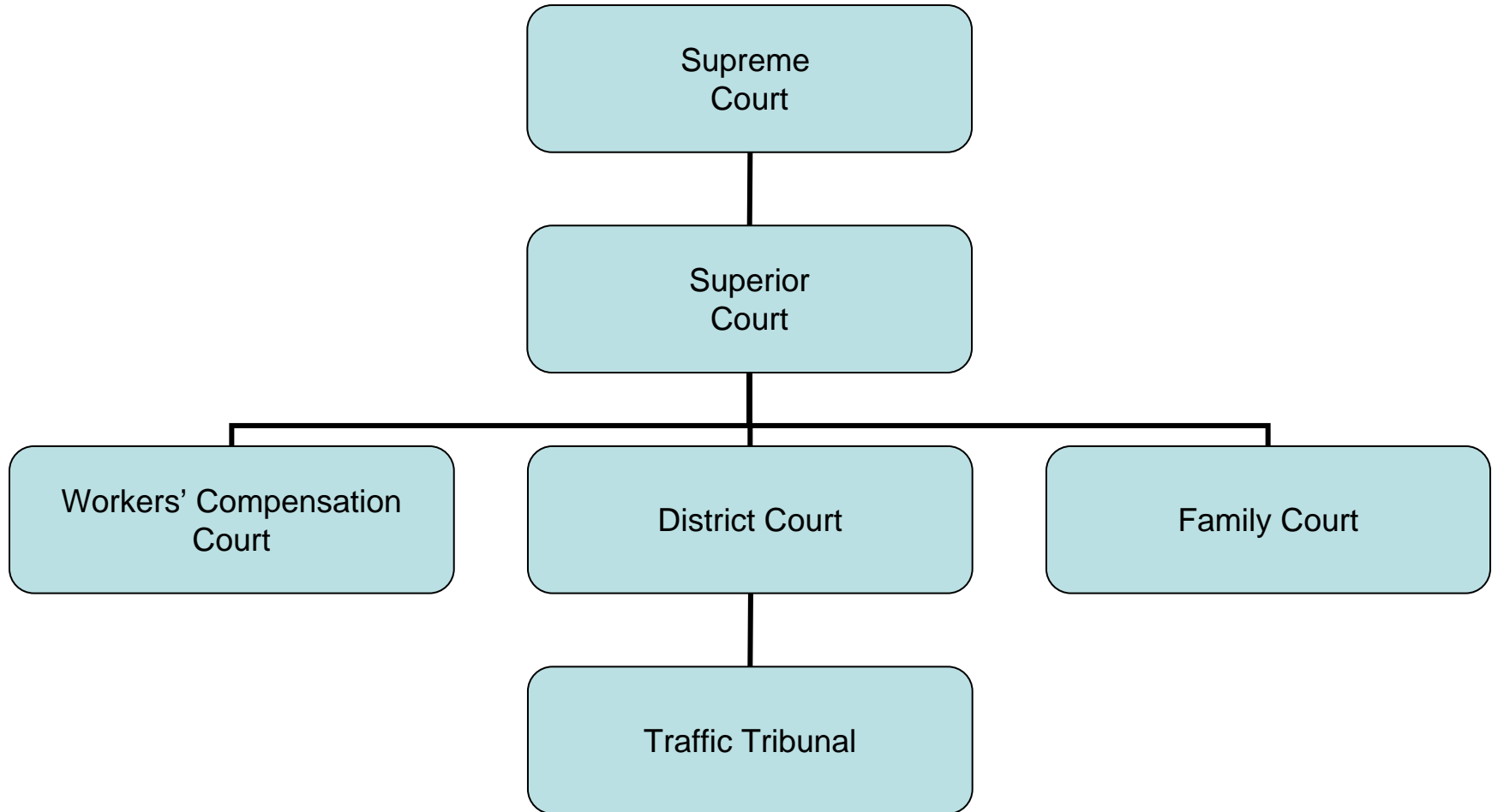
## Judicial Department - Constitution

|   | FY 2011<br>Audited  | FY 2012<br>Audited   | FY 2013<br>Enacted   | FY 2013<br>Revised   | FY 2014<br>Recommend |
|---|---------------------|----------------------|----------------------|----------------------|----------------------|
| <b>Expenditures By Program</b>          |                     |                      |                      |                      |                      |
| Supreme Court                           | 31,263,806          | 31,878,887           | 32,843,854           | 36,604,515           | 34,894,854           |
| Superior Court                          | 20,851,178          | 21,855,277           | 22,615,527           | 21,937,305           | 22,895,509           |
| Family Court                            | 19,136,922          | 20,027,371           | 20,906,417           | 20,321,283           | 21,329,265           |
| District Court                          | 10,961,933          | 11,643,985           | 11,851,922           | 11,643,091           | 12,543,456           |
| Traffic Tribunal                        | 7,572,756           | 8,192,012            | 8,191,888            | 7,933,583            | 8,190,350            |
| Worker's Compensation Court             | 7,273,592           | 7,204,814            | 7,725,081            | 7,693,329            | 7,842,060            |
| Judicial Tenure & Discipline            | 106,076             | 105,450              | 113,609              | 113,327              | 115,627              |
| <b>Total Expenditures</b>               | <b>\$97,166,263</b> | <b>\$100,907,796</b> | <b>\$104,248,298</b> | <b>\$106,246,433</b> | <b>\$107,811,121</b> |
| <b>Expenditures By Object</b>           |                     |                      |                      |                      |                      |
| Personnel                               | 74,100,105          | 78,286,142           | 81,226,075           | 79,226,861           | 83,036,796           |
| Operating Supplies and Expenses         | 10,142,041          | 10,618,217           | 9,839,752            | 9,988,589            | 10,057,792           |
| Assistance and Grants                   | 10,391,610          | 10,198,781           | 10,707,234           | 10,864,190           | 11,015,642           |
| <b>Subtotal: Operating Expenditures</b> | <b>94,633,756</b>   | <b>99,103,140</b>    | <b>101,773,061</b>   | <b>100,079,640</b>   | <b>104,110,230</b>   |
| Capital Purchases and Equipment         | 2,532,507           | 1,804,656            | 2,475,237            | 6,166,793            | 3,700,891            |
| <b>Total Expenditures</b>               | <b>\$97,166,263</b> | <b>\$100,907,796</b> | <b>\$104,248,298</b> | <b>\$106,246,433</b> | <b>\$107,811,121</b> |
| <b>Expenditures By Funds</b>            |                     |                      |                      |                      |                      |
| General Revenue                         | 84,300,614          | 87,723,958           | 89,249,996           | 87,871,436           | 91,881,359           |
| Federal Funds                           | 2,555,921           | 2,377,916            | 2,682,107            | 2,760,203            | 2,624,248            |
| Restricted Receipts                     | 9,480,024           | 9,731,044            | 10,641,195           | 11,240,237           | 11,790,514           |
| Operating Transfers from Other Funds    | 829,704             | 1,074,878            | 1,675,000            | 4,374,557            | 1,515,000            |
| <b>Total Expenditures</b>               | <b>\$97,166,263</b> | <b>\$100,907,796</b> | <b>\$104,248,298</b> | <b>\$106,246,433</b> | <b>\$107,811,121</b> |
| <b>FTE Authorization</b>                | <b>699.7</b>        | <b>723.3</b>         | <b>723.3</b>         | <b>723.3</b>         | <b>723.3</b>         |

# The Agency

## Judicial Department

---



# Personnel

## Judicial Department - Constitution Agency Summary

|   | Grade | FY 2013      |                      | FY 2014      |                      |
|---|-------|--------------|----------------------|--------------|----------------------|
|   |       | FTE          | Cost                 | FTE          | Cost                 |
| Classified  |       | 16.0         | 885,852              | 16.0         | 885,852              |
| Unclassified  |       | 707.3        | 50,877,230           | 707.3        | 51,021,655           |
| <b>Subtotal</b>   |       | <b>723.3</b> | <b>\$51,763,082</b>  | <b>723.3</b> | <b>\$51,907,507</b>  |
| Overtime  |       | -            | 417,533              | -            | 420,062              |
| Turnover  |       | -            | (\$2,847,805)        | -            | (\$1,493,729)        |
| <b>Subtotal</b>   |       | <b>-</b>     | <b>(\$2,430,272)</b> | <b>-</b>     | <b>(\$1,073,667)</b> |
| <b>Total Salaries</b>   |       | <b>723.3</b> | <b>\$49,332,810</b>  | <b>723.3</b> | <b>\$50,833,840</b>  |
| <b>Benefits</b>   |       |              |                      |              |                      |
| Payroll Accrual   |       |              | 267,725              |              | 280,664              |
| FICA  |       |              | 3,416,816            |              | 3,559,447            |
| Retiree Health  |       |              | 3,399,464            |              | 3,010,524            |
| Health Benefits   |       |              | 7,929,395            |              | 8,640,052            |
| Retirement  |       |              | 10,615,029           |              | 12,452,011           |
| <b>Subtotal</b>   |       |              | <b>\$25,628,429</b>  |              | <b>\$27,942,698</b>  |
| <b>Total Salaries and Benefits</b>                                    |       | <b>723.3</b> | <b>\$74,961,239</b>  | <b>723.3</b> | <b>\$78,776,538</b>  |
| <b>Cost Per FTE Position (excluding Statewide Benefit Assessment)</b> |       |              | <b>\$103,638</b>     |              | <b>\$108,913</b>     |
| <b>Statewide Benefit Assessment</b>                                   |       |              | <b>\$1,838,737</b>   |              | <b>\$1,890,517</b>   |
| <b>Payroll Costs</b>  |       | <b>723.3</b> | <b>\$76,799,976</b>  | <b>723.3</b> | <b>\$80,667,055</b>  |
| <b>Purchased Services</b>   |       |              |                      |              |                      |
| Training and Educational Services                                     |       |              | 114,531              |              | 114,531              |
| Legal Services  |       |              | 435,417              |              | 435,417              |
| Other Contracts   |       |              | 356,612              |              | 393,946              |
| Information Technology  |       |              | 422,451              |              | 432,451              |
| Clerical and Temporary Services                                       |       |              | 935,341              |              | 830,863              |
| Design and Engineering Services                                       |       |              | 74,533               |              | 74,533               |
| Management & Consultant Services                                      |       |              | 76,000               |              | 76,000               |
| Medical Services  |       |              | 12,000               |              | 12,000               |
| <b>Subtotal</b>   |       |              | <b>\$2,426,885</b>   |              | <b>\$2,369,741</b>   |
| <b>Total Personnel</b>  |       | <b>723.3</b> | <b>\$79,226,861</b>  | <b>723.3</b> | <b>\$83,036,796</b>  |
| <b>Distribution By Source Of Funds</b>                                |       |              |                      |              |                      |
| General Revenue   |       | 641.6        | \$68,376,554         | 641.6        | \$72,141,747         |
| Federal Funds   |       | 17.1         | \$2,343,161          | 17.1         | \$2,247,882          |
| Restricted Receipts   |       | 64.6         | \$8,507,146          | 64.6         | \$8,647,167          |
| <b>Total All Funds</b>  |       | <b>723.3</b> | <b>\$79,226,861</b>  | <b>723.3</b> | <b>\$83,036,796</b>  |

# The Program

---

## Judicial Department - Constitution Supreme Court

---

### **Program Mission**

Provide timely review of all decisions appealed from the lower courts.

Provide overall administrative direction to the unified court system.

Regulate the admission, registration, and discipline of attorneys to the Rhode Island Bar.

### **Program Description**

The Supreme Court Program includes the budget for the Court as well as the Administrative Office of State Courts, and the State Law Library.

The Court portion of the budget covers the justices, their secretarial and legal staff, the law clerk department, and the Supreme Court Clerk's Office. Through this portion of the budget the Supreme Court fulfills its role as the court of last resort. The Court also renders advisory opinions to the legislative and executive branches of government; issues writs of habeas corpus, mandamus, certiorari and certain other prerogative writs; and regulates the admission, registration and discipline of members of the Rhode Island Bar.

Administrative services include all budgetary, personnel and purchasing functions; technology services; facilities and operations, which includes the maintenance of courthouse and judicial buildings as well as security; programming for judicial education; the collection of court-ordered restitution, fines, fees and costs; judicial records center; and research and statistical analysis.

The State Law Library is the only complete, public legal reference service in Rhode Island, and it operates under the Supreme Court. The Library has over 110,000 volumes and also provides access to computer aided legal research.

Other major activities of the Supreme Court include domestic violence training and monitoring, mandatory continuing legal education, appellate screening, alternative dispute resolution, disciplinary counsel, community outreach and public relations, and the interpreter program.

### **Statutory History**

The Supreme Court is the only constitutionally established court and is identified in Article X of the Rhode Island State Constitution. The organization, jurisdiction and powers of the Supreme Court are described in Title 8 Chapter 1 of the Rhode Island General Laws, and the administrative authority of the court is established by Title 8 Chapter 15. Other statutes relating to the Supreme Court include Title 8 Chapters 3 through 7 of the Rhode Island General Laws.

# The Budget

## Judicial Department - Constitution Supreme Court

|   | 2011<br>Audited     | 2012<br>Audited     | 2013<br>Enacted     | 2013<br>Revised     | 2014<br>Recommend   |
|---|---------------------|---------------------|---------------------|---------------------|---------------------|
| <b>Expenditures By Subprogram</b>       |                     |                     |                     |                     |                     |
| Supreme Court Operations                | 27,815,702          | 28,630,707          | 29,281,614          | 33,042,275          | 31,332,614          |
| Defense of Indigents                    | 3,448,104           | 3,248,180           | 3,562,240           | 3,562,240           | 3,562,240           |
| <b>Total Expenditures</b>               | <b>\$31,263,806</b> | <b>\$31,878,887</b> | <b>\$32,843,854</b> | <b>\$36,604,515</b> | <b>\$34,894,854</b> |
| <b>Expenditures By Object</b>           |                     |                     |                     |                     |                     |
| Personnel                               | 17,658,290          | 18,614,049          | 19,034,317          | 19,131,245          | 19,793,696          |
| Operating Supplies and Expenses         | 7,422,115           | 7,636,444           | 7,103,826           | 7,003,550           | 7,049,590           |
| Assistance and Grants                   | 4,472,223           | 4,238,918           | 4,473,082           | 4,543,535           | 4,593,285           |
| <b>Subtotal: Operating Expenditures</b> | <b>29,552,628</b>   | <b>30,489,411</b>   | <b>30,611,225</b>   | <b>30,678,330</b>   | <b>31,436,571</b>   |
| Capital Purchases and Equipment         | 1,711,178           | 1,389,476           | 2,232,629           | 5,926,185           | 3,458,283           |
| <b>Total Expenditures</b>               | <b>\$31,263,806</b> | <b>\$31,878,887</b> | <b>\$32,843,854</b> | <b>\$36,604,515</b> | <b>\$34,894,854</b> |
| <b>Expenditures By Funds</b>            |                     |                     |                     |                     |                     |
| General Revenue                         | 28,800,456          | 29,628,646          | 29,531,338          | 29,009,217          | 29,763,782          |
| Federal Funds                           | 269,004             | 101,870             | 220,021             | 269,665             | 272,163             |
| Restricted Receipts                     | 1,364,642           | 1,073,493           | 1,417,495           | 2,951,076           | 3,343,909           |
| Operating Transfers from Other Funds    | 829,704             | 1,074,878           | 1,675,000           | 4,374,557           | 1,515,000           |
| <b>Total Expenditures</b>               | <b>\$31,263,806</b> | <b>\$31,878,887</b> | <b>\$32,843,854</b> | <b>\$36,604,515</b> | <b>\$34,894,854</b> |

# Personnel

## Judicial Department - Constitution Supreme Court

|   | Grade  | FY 2013    |                  | FY 2014    |                  |
|---|--------|------------|------------------|------------|------------------|
|   |        | FTE        | Cost             | FTE        | Cost             |
| <b>Classified</b>                         |        |            |                  |            |                  |
| ASSISTANT BUILDING AND GROUNDS OFFICER    | 00024A | 4.0        | 233,389          | 4.0        | 233,389          |
| BLDG MAINT SUPERVISOR                     | 00018G | 1.0        | 39,437           | 1.0        | 39,437           |
| JANITOR                                   | 000000 | 3.0        | 96,977           | 3.0        | 96,977           |
| <b>Subtotal</b>                           |        | <b>8.0</b> | <b>\$369,803</b> | <b>8.0</b> | <b>\$369,803</b> |
| <b>Unclassified</b>                       |        |            |                  |            |                  |
| CHIEF JUSTICE (SUPREME COURT)             | 08809F | 1.0        | 218,760          | 1.0        | 218,760          |
| ASSOCIATE JUSTICE                         | 08808F | 4.0        | 745,766          | 4.0        | 745,766          |
| STATE COURT ADMINISTRATOR                 | 08848A | 1.0        | 165,125          | 1.0        | 165,125          |
| CHIEF DISCIPLINARY COUNSEL                | 00844A | 1.0        | 143,555          | 1.0        | 143,555          |
| EXECUTIVE DIRECTOR (JUDICIAL)             | 00844A | 1.0        | 138,844          | 1.0        | 138,844          |
| DIRECTOR OF FINANCE/ASSOCIATE             | 00844A | 1.0        | 138,415          | 1.0        | 138,415          |
| EXECUTIVE ASSISTANT FOR POLICY AND        | 00843A | 1.0        | 137,080          | 1.0        | 139,986          |
| DEPUTY ADMINISTRATOR (STATE COURTS)       | 00845A | 1.0        | 136,530          | 1.0        | 136,530          |
| CHIEF SUPERVISORY CLERK                   | 00842A | 2.0        | 254,472          | 2.0        | 254,472          |
| DEPUTY EXECUTIVE                          | 00841A | 2.0        | 254,094          | 2.0        | 254,094          |
| CLERK PRO-TEMPORE                         | 00841A | 1.0        | 111,453          | 1.0        | 111,453          |
| DEPUTY DISCIPLINARY COUNSEL               | 00837A | 1.0        | 105,551          | 1.0        | 105,551          |
| ASSISTANT ADMINISTRATOR/POLICY & PROGRAMS | 00837A | 2.0        | 209,839          | 2.0        | 209,839          |
| ASSISTANT DIRECTOR POLICY OFFICE          | 00839A | 6.0        | 616,978          | 6.0        | 616,978          |
| DIRECTOR OF CONSUMER                      | 00835A | 1.0        | 98,986           | 1.0        | 98,986           |
| PUBLIC INFORMATION OFFICER                | 00835A | 1.0        | 98,633           | 1.0        | 98,633           |
| PRINCIPAL COURT FUNCTIONAL SPECIALIST     | 04436A | 1.0        | 98,011           | 1.0        | 98,011           |
| STAFF ATTORNEY IV                         | 00834A | 1.0        | 94,729           | 1.0        | 94,729           |
| CHIEF STAFF ATTORNEY                      | 00835A | 2.0        | 184,121          | 2.0        | 184,121          |
| SOFTWARE SUPPORT SPECIALIST               | 00133A | 5.0        | 453,674          | 5.0        | 453,674          |
| ASSISTANT DISCIPLINARY COUNSEL            | 00831A | 2.0        | 170,055          | 2.0        | 170,055          |
| SENIOR DEVELOPER (JUDICIAL)               | 08835F | 1.0        | 82,403           | 1.0        | 82,403           |
| STAFF ATTORNEY II                         | 00830A | 1.8        | 147,963          | 1.8        | 147,963          |
| EXECUTIVE DIRECTOR/EXECUTIVE              | 00831A | 1.0        | 81,473           | 1.0        | 81,473           |
| ADMINISTRATIVE CLERK                      | 00029A | 1.0        | 81,176           | 1.0        | 81,176           |
| CONFIDENTIAL INVESTIGATOR                 | 00831A | 2.0        | 159,877          | 2.0        | 159,877          |
| PROJECT MANAGER                           | 08630A | 6.0        | 467,410          | 6.0        | 467,410          |
| PRINCIPAL SUPERVISORY CLERK               | 00130A | 2.0        | 155,744          | 2.0        | 155,744          |
| ADMINISTRATIVE ASST (JUDICIAL)            | 04429A | 3.0        | 231,146          | 3.0        | 231,146          |
| STAFF ATTORNEY                            | 00829A | 4.7        | 342,607          | 4.7        | 342,607          |
| ADMINISTRATIVE CLERK OF OFFICE SERVICES   | 04427A | 2.0        | 143,564          | 2.0        | 143,564          |
| ASSISTANT ADMINISTRATOR/MANAGEMENT AND    | 00134A | 1.0        | 71,291           | 1.0        | 73,894           |
| DEPUTY LAW LIBRARIAN                      | 00126A | 1.0        | 70,386           | 1.0        | 70,386           |
| PRINCIPAL DEPUTY CLERK (SYSTEMS)          | 00825A | 1.0        | 69,872           | 1.0        | 69,872           |
| SPECIAL ASSISTANT                         | 00829A | 4.0        | 276,636          | 4.0        | 276,636          |
| PROJECT MANAGER (JUDICIAL)                | 08830A | 1.0        | 68,459           | 1.0        | 68,459           |
| COORDINATOR, SPECIAL PROJECTS             | 00827A | 6.0        | 401,583          | 6.0        | 403,716          |
| FISCAL MANAGEMENT OFFICER (JUDICIAL)      | 08832A | 1.0        | 66,904           | 1.0        | 69,352           |
| PRINCIPAL ASSISTANT ADMINISTRATOR         | 08825A | 1.0        | 66,112           | 1.0        | 66,112           |
| BAR ADMINISTRATOR (JUDICIAL)              | 08829A | 1.0        | 62,632           | 1.0        | 65,886           |



# Personnel

## Judicial Department - Constitution Supreme Court

|   | Grade   | FY 2013      |                     | FY 2014      |                     |
|---|---------|--------------|---------------------|--------------|---------------------|
|   |         | FTE          | Cost                | FTE          | Cost                |
| PRINCIPAL ADMINISTRATIVE CLERK  | 00825A  | 2.0          | 125,044             | 2.0          | 125,044             |
| PRINCIPAL DEPUTY CLERK (SYSTEMS)                                      | 08825A  | 1.0          | 61,891              | 1.0          | 61,891              |
| OFFICE MANAGER  | 00824A  | 3.0          | 179,450             | 3.0          | 179,450             |
| PRIN ASSISTANT ADMINISTRATOR  | 00325AA | 2.0          | 118,156             | 2.0          | 118,156             |
| SENIOR MONITORING AND EVALUATION                                      | 05325A  | 2.0          | 115,343             | 2.0          | 115,343             |
| SENIOR MANAGEMENT ANALYST   | 00823A  | 3.0          | 166,603             | 3.0          | 166,603             |
| ASSISTANT SUPERVISING CLERK   | 00122A  | 2.0          | 108,401             | 2.0          | 108,401             |
| MONITORING & EVALUATION SPECIALIST                                    | 00823A  | 3.0          | 162,042             | 3.0          | 165,916             |
| LAW CLERK (JUDICIARY)   | 08823A  | 16.0         | 835,043             | 16.0         | 835,043             |
| CHAMBER LAW CLERK (JUDICIAL)  | 08823A  | 11.0         | 570,526             | 11.0         | 570,526             |
| ADMINISTRATIVE ASSISTANT  | 05322A  | 5.0          | 258,582             | 5.0          | 259,719             |
| SENIOR MANAGEMENT ANALYST (JUDICIAL)                                  | 04423A  | 4.0          | 197,937             | 4.0          | 199,534             |
| OPERATIONS TECHNICIAN   | 00821A  | 0.6          | 29,318              | 0.6          | 29,318              |
| SENIOR ADMINISTRATIVE AIDE  | 00821A  | 0.6          | 29,318              | 0.6          | 29,318              |
| ADMINISTRATIVE AIDE   | 00816A  | 1.0          | 48,466              | 1.0          | 48,466              |
| DEPUTY CLERK  | 00120A  | 5.0          | 241,105             | 5.0          | 241,105             |
| RECORDS CUSTODIAN DOCUMENTS DISTRIBUTION                              | 04418A  | 4.0          | 187,719             | 4.0          | 187,719             |
| CONFIDENTIAL SECRETARY  | 00817A  | 1.0          | 45,963              | 1.0          | 45,963              |
| ADMINISTRATIVE ASSISTANT II (JUDICIAL)                                | 08820A  | 1.0          | 44,641              | 1.0          | 45,827              |
| ADMINISTRATIVE ASSISTANT II   | 00315A  | 3.6          | 154,941             | 3.6          | 154,941             |
| SECOND ASSISTANT LAW LIBRARIAN  | 00811A  | 0.8          | 32,071              | 0.8          | 32,071              |
| PRIN CLERK TYPIST   | 00010A  | 1.0          | 35,029              | 1.0          | 35,029              |
| ADMINISTRATIVE AIDE   | 00810A  | 0.6          | 20,966              | 0.6          | 20,966              |
| DATA ENTRY AIDE   | 05410A  | 1.0          | 32,594              | 1.0          | 32,594              |
| SEASONAL EDITOR III (JUDICIAL)  | 00287H  | -            | 18,200              | -            | 18,200              |
| <b>Subtotal</b>   |         | <b>153.7</b> | <b>\$11,441,258</b> | <b>153.7</b> | <b>\$11,462,396</b> |
| Overtime  |         | -            | 233,535             | -            | 236,064             |
| Turnover  |         | -            | (220,102)           | -            | (20,102)            |
| <b>Subtotal</b>   |         | <b>-</b>     | <b>\$13,433</b>     | <b>-</b>     | <b>\$215,962</b>    |
| <b>Total Salaries</b>   |         | <b>161.7</b> | <b>\$11,824,494</b> | <b>161.7</b> | <b>\$12,048,161</b> |
| <b>Benefits</b>   |         |              |                     |              |                     |
| Payroll Accrual   |         |              | 63,450              |              | 66,134              |
| FICA  |         |              | 856,945             |              | 878,136             |
| Retiree Health  |         |              | 788,839             |              | 835,988             |
| Health Benefits   |         |              | 1,894,724           |              | 1,957,544           |
| Retirement  |         |              | 2,587,581           |              | 2,897,254           |
| <b>Subtotal</b>   |         |              | <b>\$6,191,539</b>  |              | <b>\$6,635,056</b>  |
| <b>Total Salaries and Benefits</b>                                    |         | <b>161.7</b> | <b>\$18,016,033</b> | <b>161.7</b> | <b>\$18,683,217</b> |
| <b>Cost Per FTE Position (excluding Statewide Benefit Assessment)</b> |         |              | <b>\$111,416</b>    |              | <b>\$115,542</b>    |
| <b>Statewide Benefit Assessment</b>                                   |         |              | <b>\$434,661</b>    |              | <b>\$442,954</b>    |
| <b>Payroll Costs</b>  |         | <b>161.7</b> | <b>\$18,450,694</b> | <b>161.7</b> | <b>\$19,126,171</b> |

# Personnel

## Judicial Department - Constitution Supreme Court

|  | Grade | FY 2013      |                     | FY 2014      |                     |
|--|-------|--------------|---------------------|--------------|---------------------|
|  |       | FTE          | Cost                | FTE          | Cost                |
| <b>Purchased Services</b>              |       |              |                     |              |                     |
| Information Technology                 |       |              | 300,000             |              | 310,000             |
| Clerical and Temporary Services        |       |              | 119,582             |              | 128,342             |
| Legal Services                         |       |              | 87,185              |              | 87,185              |
| Other Contracts                        |       |              | 98,232              |              | 66,446              |
| Training and Educational Services      |       |              | 10,000              |              | 10,000              |
| Design and Engineering Services        |       |              | 65,552              |              | 65,552              |
| <b>Subtotal</b>                        |       |              | <b>\$680,551</b>    |              | <b>\$667,525</b>    |
| <b>Total Personnel</b>                 |       | <b>161.7</b> | <b>\$19,131,245</b> | <b>161.7</b> | <b>\$19,793,696</b> |
| <b>Distribution By Source Of Funds</b> |       |              |                     |              |                     |
| General Revenue                        |       | 150.1        | \$17,334,017        | 150.1        | \$17,978,844        |
| Federal Funds                          |       | -            | \$60,728            | -            | \$72,017            |
| Restricted Receipts                    |       | 11.6         | \$1,736,500         | 11.6         | \$1,742,835         |
| <b>Total All Funds</b>                 |       | <b>161.7</b> | <b>\$19,131,245</b> | <b>161.7</b> | <b>\$19,793,696</b> |

# Performance Measures

---

## Judicial Department - Constitution Supreme Court

---

### *Disposition Rate of Appeal Cases*

The figures below represent the disposition rate of appeal cases. For annual disposition rate, total dispositions should equal or exceed new appeals in order for the court to stay current with caseload. [Performance data and targets are provided by calendar year. The 2011 and 2012 Actual figures represent performance data for calendar years 2010 and 2011, respectively. The 2013 Actual figure represents performance data from 1/1/12 through 9/30/12.]

|               | 2011 | 2012 | 2013 | 2014 |
|---------------|------|------|------|------|
| <b>Target</b> | 100% | 100% | 100% | 100% |
| <b>Actual</b> | 80%  | 102% | 101% | --   |

# The Program

---

## Judicial Department - Constitution Superior Court

---

### **Program Mission**

Provide timely and fair adjudication of all cases within the jurisdiction of the Superior Court.

Maintain a complete and accurate record for all cases that are filed with the Superior Court.

Provide a written transcript of any proceeding or appeal.

### **Program Description**

The program budget for Superior Court includes the operation of the Court itself, administrative services, and the operation of the clerks' offices.

Superior Court has four locations: Providence/Bristol, Kent, Washington, and Newport Counties. It has jurisdiction over all felony cases and misdemeanor cases which have been appealed or waived from the District Court. The Court also hears all civil cases where the amount at issue exceeds \$10,000, equity cases wherein injunctive relief is sought, civil cases that are appealed from the District Court, and all probate and zoning appeals. The Superior Court has concurrent original jurisdiction with the District Court in all other actions at law in which the amount in controversy exceeds \$5,000 yet does not exceed \$10,000. The administrative office of the Court handles all case scheduling, supervises the court secretaries and stenographers, and provides other administrative services.

Each Court location has a clerk's office which is responsible for maintaining the records of the court. This includes creating files for each case, filing all papers that are received, updating the record in each case to reflect court proceedings and the papers that have been filed, and maintaining and marking all exhibits of evidence.

Other major programs include jury selection, court-annexed arbitration, court ordered restitution, and administration of jurors' fees and expenses. In FY 1995, a Gun Court was established to adjudicate offenses where guns are involved and the planning process began for the Adult Drug Court. In FY 2002, the Adult Drug Court was established preceded by the FY 2001 establishment of the Business Calendar.

### **Statutory History**

The Superior Court is a statutorily authorized court. The jurisdiction and sessions of the court, and the role and responsibilities of the clerks, secretaries and stenographers of the court are outlined in Title 8 Chapters 2 through 7 of the Rhode Island General Laws.

# The Budget

## Judicial Department - Constitution Superior Court

|   | 2011<br>Audited     | 2012<br>Audited     | 2013<br>Enacted     | 2013<br>Revised     | 2014<br>Recommend   |
|---|---------------------|---------------------|---------------------|---------------------|---------------------|
| <b>Expenditures By Subprogram</b>       |                     |                     |                     |                     |                     |
| Superior Court Operations               | 19,315,932          | 20,296,547          | 20,987,476          | 20,076,155          | 20,999,642          |
| Jury Operations                         | 1,535,246           | 1,558,730           | 1,628,051           | 1,861,150           | 1,895,867           |
| <b>Total Expenditures</b>               | <b>\$20,851,178</b> | <b>\$21,855,277</b> | <b>\$22,615,527</b> | <b>\$21,937,305</b> | <b>\$22,895,509</b> |
| <b>Expenditures By Object</b>           |                     |                     |                     |                     |                     |
| Personnel                               | 17,149,435          | 18,043,945          | 18,955,820          | 18,006,503          | 18,954,986          |
| Operating Supplies and Expenses         | 1,172,478           | 1,329,728           | 1,128,160           | 1,225,555           | 1,225,447           |
| Assistance and Grants                   | 2,372,356           | 2,350,611           | 2,468,657           | 2,642,357           | 2,652,186           |
| <b>Subtotal: Operating Expenditures</b> | <b>20,694,269</b>   | <b>21,724,284</b>   | <b>22,552,637</b>   | <b>21,874,415</b>   | <b>22,832,619</b>   |
| Capital Purchases and Equipment         | 156,909             | 130,993             | 62,890              | 62,890              | 62,890              |
| <b>Total Expenditures</b>               | <b>\$20,851,178</b> | <b>\$21,855,277</b> | <b>\$22,615,527</b> | <b>\$21,937,305</b> | <b>\$22,895,509</b> |
| <b>Expenditures By Funds</b>            |                     |                     |                     |                     |                     |
| General Revenue                         | 20,303,527          | 21,341,828          | 21,932,328          | 21,487,320          | 22,494,581          |
| Federal Funds                           | 87,692              | 65,573              | 175,025             | 143,262             | 94,205              |
| Restricted Receipts                     | 459,959             | 447,876             | 508,174             | 306,723             | 306,723             |
| <b>Total Expenditures</b>               | <b>\$20,851,178</b> | <b>\$21,855,277</b> | <b>\$22,615,527</b> | <b>\$21,937,305</b> | <b>\$22,895,509</b> |

# Personnel

## Judicial Department - Constitution Superior Court

|   | Grade            | FY 2013    |                  | FY 2014    |                  |
|---|------------------|------------|------------------|------------|------------------|
|   |                  | FTE        | Cost             | FTE        | Cost             |
| <b>Unclassified</b>   |                  |            |                  |            |                  |
| PRESIDING JUSTICE (SUPERIOR COURT)                            | 08807F           | 1.0        | 196,954          | 1.0        | 196,954          |
| ASSOCIATE JUSTICE   | 08805F           | 21.0       | 3,476,523        | 21.0       | 3,476,523        |
| SPECIAL MAGISTRATE  | 08803F           | 1.0        | 164,379          | 1.0        | 164,379          |
| MAGISTRATE  | 08803F           | 3.0        | 475,650          | 3.0        | 475,650          |
| ADMIN CLERK (SUPERIOR COURT)                                  | 00846A           | 1.0        | 154,340          | 1.0        | 154,340          |
| GENERAL MAGISTRATE  | 08803F           | 1.0        | 153,887          | 1.0        | 153,887          |
| CLERK (PROVIDENCE COUNTY)                                     | 00839A           | 1.0        | 120,434          | 1.0        | 120,434          |
| JURY COMMISSIONER   | 00837A           | 1.0        | 106,120          | 1.0        | 106,120          |
| ADMINISTRATOR, ARBITRATION PROGRAM                            | 00139A           | 1.0        | 97,162           | 1.0        | 97,162           |
| GENERAL CHIEF CLERK   | 00835A           | 1.0        | 90,644           | 1.0        | 90,644           |
| CLERK (NEWPORT COUNTY)  | 00832A           | 1.0        | 88,759           | 1.0        | 88,759           |
| DEPUTY ADMINISTRATOR/CLERK                                    | 00834A           | 1.0        | 87,519           | 1.0        | 87,519           |
| CONFIDENTIAL INVESTIGATOR                                     | 00831A           | 1.0        | 83,671           | 1.0        | 83,671           |
| CLERK (WASHINGTON COUNTY)                                     | 00832A           | 1.0        | 81,363           | 1.0        | 81,363           |
| ASSISTANT ADMINISTRATOR/MANAGEMENT AND<br>CLERK (KENT COUNTY) | 00134A<br>00834A | 1.0<br>1.0 | 79,563<br>79,563 | 1.0<br>1.0 | 79,563<br>79,563 |
| ASSOCIATE JURY COMMISSIONER                                   | 00833A           | 1.0        | 76,708           | 1.0        | 76,708           |
| PROJECT MANAGER   | 08630A           | 2.0        | 152,753          | 2.0        | 152,753          |
| ADMINISTRATIVE CLERK  | 00029A           | 1.0        | 75,769           | 1.0        | 75,769           |
| SPECIAL ASSISTANT (JUDICIAL)                                  | 08829A           | 1.0        | 75,769           | 1.0        | 75,769           |
| SUPERVISING CLERK   | 08626A           | 4.0        | 276,338          | 4.0        | 276,338          |
| PROJECT COORDINATOR   | 00026A           | 1.0        | 68,966           | 1.0        | 68,966           |
| COURT REPORTER  | 00127A           | 28.0       | 1,857,782        | 28.0       | 1,857,782        |
| MANAGER OF CALENDAR SERVICES (OUT)                            | 00824A           | 1.0        | 63,372           | 1.0        | 63,372           |
| SUPERVISING DEPUTY CLERK                                      | 00126A           | 1.0        | 61,485           | 1.0        | 61,485           |
| PRIN ASSISTANT ADMINISTRATOR                                  | 00325AA          | 1.0        | 60,695           | 1.0        | 62,933           |
| COORDINATOR, SPECIAL PROJECTS                                 | 00827A           | 1.0        | 60,232           | 1.0        | 63,232           |
| ASSISTANT MANAGER OF CALENDAR SERVICES                        | 00823A           | 2.0        | 120,001          | 2.0        | 120,001          |
| ASSISTANT SUPERVISING CLERK                                   | 00122A           | 2.0        | 119,764          | 2.0        | 119,764          |
| MANAGER OF CALENDAR SERVICES (PROVIDENCE)                     | 00824A           | 1.0        | 57,433           | 1.0        | 59,396           |
| COURT SECRETARY/JUDICIAL, SUPERIOR COURT                      | 00823A           | 1.0        | 57,053           | 1.0        | 57,053           |
| DEPUTY CLERK I  | 00124A           | 3.0        | 170,287          | 3.0        | 170,287          |
| SENIOR ADMINISTRATIVE AIDE                                    | 00821A           | 1.0        | 56,059           | 1.0        | 56,059           |
| PRODUCTION SYSTEMS SPECIALIST                                 | 00820A           | 1.0        | 54,319           | 1.0        | 54,319           |
| ASSISTANT ADMIN OFFICER                                       | 00021A           | 1.0        | 52,931           | 1.0        | 52,931           |
| MONITORING & REVALUATION SPECIALIST (JUD)                     | 08823A           | 2.0        | 101,980          | 2.0        | 103,526          |
| DEPUTY CLERK (SUPERIOR COURT)                                 | 00120A           | 26.0       | 1,308,184        | 26.0       | 1,313,211        |
| ASSISTANT COURT SECRETARY/JUDICIAL                            | 00821A           | 3.0        | 145,411          | 3.0        | 146,788          |
| CONFIDENTIAL SECRETARY  | 00817A           | 1.0        | 45,963           | 1.0        | 45,963           |
| ELECTRONIC COURT REPORTER                                     | 00119A           | 2.7        | 122,949          | 2.7        | 122,949          |
| ADMINISTRATIVE AIDE   | 00816A           | 1.0        | 45,528           | 1.0        | 45,528           |
| POLICY AIDE   | 00818A           | 4.0        | 172,771          | 4.0        | 172,771          |
| SENIOR ADMINISTRATIVE AIDE                                    | 00817A           | 1.0        | 42,211           | 1.0        | 42,211           |
| ADMINISTRATIVE ASSISTANT II                                   | 00315A           | 1.0        | 41,270           | 1.0        | 41,270           |
| ASSISTANT CLERK (SUPERIOR COURT)                              | 00118A           | 9.0        | 364,850          | 9.0        | 369,185          |

# Personnel

## Judicial Department - Constitution Superior Court

|   | Grade  | FY 2013      |                     | FY 2014      |                     |
|---|--------|--------------|---------------------|--------------|---------------------|
|   |        | FTE          | Cost                | FTE          | Cost                |
| ADMINISTRATIVE AIDE   | 00815A | 1.0          | 37,722              | 1.0          | 37,722              |
| ADMINISTRATIVE ASSISTANT  | 00314A | 1.0          | 37,129              | 1.0          | 38,154              |
| GENERAL OPERATIONS ASSISTANT  | 00114A | 9.0          | 327,972             | 9.0          | 331,422             |
| CENTRAL REGISTRY CLRK   | 00014A | 1.0          | 33,640              | 1.0          | 33,640              |
| DATA ENTRY AIDE   | 05410A | 1.0          | 32,314              | 1.0          | 33,094              |
| RECORDS CLERK/DATA ENTRY AIDE   | 00110A | 10.0         | 317,495             | 10.0         | 322,575             |
| <b>Subtotal</b>   |        | <b>165.7</b> | <b>\$12,231,636</b> | <b>165.7</b> | <b>\$12,261,457</b> |
| Overtime  |        | -            | 43,707              | -            | 43,707              |
| Turnover  |        | -            | (782,594)           | -            | (396,290)           |
| <b>Subtotal</b>   |        | <b>-</b>     | <b>(\$738,887)</b>  | <b>-</b>     | <b>(\$352,583)</b>  |
| <b>Total Salaries</b>   |        | <b>165.7</b> | <b>\$11,492,749</b> | <b>165.7</b> | <b>\$11,908,874</b> |
| <b>Benefits</b>   |        |              |                     |              |                     |
| Payroll Accrual   |        |              | 63,051              |              | 66,185              |
| FICA  |        |              | 782,634             |              | 820,710             |
| Retiree Health  |        |              | 815,984             |              | 623,175             |
| Health Benefits   |        |              | 1,600,061           |              | 1,761,145           |
| Retirement  |        |              | 2,420,168           |              | 2,942,384           |
| <b>Subtotal</b>   |        |              | <b>\$5,681,898</b>  |              | <b>\$6,213,599</b>  |
| <b>Total Salaries and Benefits</b>                                    |        | <b>165.7</b> | <b>\$17,174,647</b> | <b>165.7</b> | <b>\$18,122,473</b> |
| <b>Cost Per FTE Position (excluding Statewide Benefit Assessment)</b> |        |              | <b>\$103,649</b>    |              | <b>\$109,369</b>    |
| <b>Statewide Benefit Assessment</b>                                   |        |              | <b>\$429,338</b>    |              | <b>\$444,944</b>    |
| <b>Payroll Costs</b>  |        | <b>165.7</b> | <b>\$17,603,985</b> | <b>165.7</b> | <b>\$18,567,417</b> |
| <b>Purchased Services</b>   |        |              |                     |              |                     |
| Clerical and Temporary Services                                       |        |              | 60,291              |              | 45,342              |
| Legal Services  |        |              | 311,631             |              | 311,631             |
| Other Contracts   |        |              | 17,000              |              | 17,000              |
| Design and Engineering Services                                       |        |              | 1,596               |              | 1,596               |
| Medical Services  |        |              | 12,000              |              | 12,000              |
| <b>Subtotal</b>   |        |              | <b>\$402,518</b>    |              | <b>\$387,569</b>    |
| <b>Total Personnel</b>  |        | <b>165.7</b> | <b>\$18,006,503</b> | <b>165.7</b> | <b>\$18,954,986</b> |
| <b>Distribution By Source Of Funds</b>                                |        |              |                     |              |                     |
| General Revenue   |        | 165.7        | \$17,663,368        | 165.7        | \$18,626,800        |
| Federal Funds   |        | -            | \$43,135            | -            | \$28,186            |
| Restricted Receipts   |        | -            | \$300,000           | -            | \$300,000           |
| <b>Total All Funds</b>  |        | <b>165.7</b> | <b>\$18,006,503</b> | <b>165.7</b> | <b>\$18,954,986</b> |

# Performance Measures

---

## Judicial Department - Constitution Superior Court

---

### *Felony Disposition Rate*

The figures below represent the percentage of felony cases disposed within 180 days of arraignment. [Performance data and targets are provided by calendar year. The 2011 and 2012 Actual figures represent performance data for calendar years 2010 and 2011, respectively. The 2013 Actual figure represents performance data from 1/1/12 through 9/30/12.]

|               | 2011 | 2012 | 2013 | 2014 |
|---------------|------|------|------|------|
| <b>Target</b> | 75%  | 75%  | 75%  | 75%  |
| <b>Actual</b> | 65%  | 62%  | 60%  | --   |

### *Civil Case Disposition Rate*

The figures below reflect the disposition rate of civil cases assigned to the trial calendar. Total dispositions should equal or exceed new cases each year in order for the court to stay current with the caseload. [Performance data and targets are provided by calendar year. The 2011 and 2012 Actual figures represent performance data for calendar years 2010 and 2011, respectively. The 2013 Actual figure represents performance data from 1/1/12 through 9/30/12.]

|               | 2011 | 2012 | 2013 | 2014 |
|---------------|------|------|------|------|
| <b>Target</b> | 100% | 100% | 100% | 100% |
| <b>Actual</b> | 109% | 146% | 144% | --   |



# The Program

---

## Judicial Department - Constitution Family Court

---

### **Program Mission**

Adjudicate the cases within the jurisdiction of the Family Court in a timely and fair manner.

Provide counseling and other assistance to families involved in litigation before the court.

### **Program Description**

The program budget for Family Court includes the operation of the Court itself, the administrative office of the Court, the clerks' offices, and the operation of several ancillary programs, including juvenile intake services, the Family Counseling Unit, the Collections Unit and the Court Appointed Special Advocate Unit.

The Family Court handles all criminal cases involving juveniles; juvenile status offenses, such as truancy and disobedience; all cases where parents have been charged with neglect, abandonment or abuse of their children; and other miscellaneous cases involving children, such as child marriages and paternity issues. The Court also hears all divorces and issues stemming from a divorce, such as orders for child support and temporary allowances.

The Court has offices in Providence, Kent, Newport and Washington Counties. There are clerks' offices in each of these locations, and the office staff is responsible for preparing all court calendars and maintaining records of the Court. All papers are filed with the clerk's office, and this office sets up a file for each case and maintains an up-to-date record of court proceedings and the papers that have been filed.

Because of the special nature of the Family Court, it provides a variety of services to families. For example, the Family Counseling Unit provides alcohol and drug screens and supervises visitation, in addition to providing investigative and mediation services to the court. The Child Support Collections Unit handles the collection and disbursement of child support payments. Specialty courts include the Juvenile Drug Court, the Family Treatment Drug Court, the Domestic Violence Court, the Truancy Court, the Mental Health Court Clinic, and the Juvenile Re-entry Court.

### **Statutory History**

The Family Court is authorized by statute. The composition and jurisdiction of the Family Court is identified in Title 8 Chapter 10 of the Rhode Island General Laws.

# The Budget

## Judicial Department - Constitution Family Court

|   | 2011<br>Audited     | 2012<br>Audited     | 2013<br>Enacted     | 2013<br>Revised     | 2014<br>Recommend   |
|---|---------------------|---------------------|---------------------|---------------------|---------------------|
| <b>Expenditures By Subprogram</b>       |                     |                     |                     |                     |                     |
| Operations                              | 19,136,922          | 20,027,371          | 20,906,417          | 20,321,283          | 21,329,265          |
| <b>Total Expenditures</b>               | <b>\$19,136,922</b> | <b>\$20,027,371</b> | <b>\$20,906,417</b> | <b>\$20,321,283</b> | <b>\$21,329,265</b> |
| <b>Expenditures By Object</b>           |                     |                     |                     |                     |                     |
| Personnel                               | 17,319,361          | 18,402,569          | 19,283,741          | 18,624,781          | 19,578,856          |
| Operating Supplies and Expenses         | 440,496             | 509,053             | 366,225             | 463,142             | 467,145             |
| Assistance and Grants                   | 1,030,781           | 989,592             | 1,185,304           | 1,162,213           | 1,212,117           |
| <b>Subtotal: Operating Expenditures</b> | <b>18,790,638</b>   | <b>19,901,214</b>   | <b>20,835,270</b>   | <b>20,250,136</b>   | <b>21,258,118</b>   |
| Capital Purchases and Equipment         | 346,284             | 126,157             | 71,147              | 71,147              | 71,147              |
| <b>Total Expenditures</b>               | <b>\$19,136,922</b> | <b>\$20,027,371</b> | <b>\$20,906,417</b> | <b>\$20,321,283</b> | <b>\$21,329,265</b> |
| <b>Expenditures By Funds</b>            |                     |                     |                     |                     |                     |
| General Revenue                         | 16,875,534          | 17,147,852          | 18,044,955          | 18,030,704          | 19,071,385          |
| Federal Funds                           | 2,187,175           | 2,113,121           | 2,156,933           | 2,290,579           | 2,257,880           |
| Restricted Receipts                     | 74,213              | 766,398             | 704,529             | -                   | -                   |
| <b>Total Expenditures</b>               | <b>\$19,136,922</b> | <b>\$20,027,371</b> | <b>\$20,906,417</b> | <b>\$20,321,283</b> | <b>\$21,329,265</b> |

# Personnel

## Judicial Department - Constitution Family Court

|  | Grade  | FY 2013 |           | FY 2014 |           |
|--|--------|---------|-----------|---------|-----------|
|  |        | FTE     | Cost      | FTE     | Cost      |
| <b>Unclassified</b>                        |        |         |           |         |           |
| CHIEF JUDGE, FAMILY COURT                  | 08807F | 1.0     | 196,954   | 1.0     | 196,954   |
| ASSOCIATE JUSTICE                          | 08805F | 11.0    | 1,830,117 | 11.0    | 1,830,117 |
| MAGISTRATE                                 | 08803F | 7.0     | 1,080,706 | 7.0     | 1,080,706 |
| ADMIN CLERK (SUPERIOR COURT)               | 00846A | 1.0     | 153,809   | 1.0     | 153,809   |
| GENERAL MAGISTRATE                         | 08803F | 1.0     | 139,897   | 1.0     | 139,897   |
| ADMINISTRATOR/DIRECTOR (CASA)(JUDICIAL)    | 08843A | 1.0     | 135,287   | 1.0     | 135,287   |
| ADMINISTRATOR - CLERK (FAMILY COURT)       | 00843A | 1.0     | 133,638   | 1.0     | 133,638   |
| DEPUTY EXECUTIVE                           | 00841A | 1.0     | 125,280   | 1.0     | 125,277   |
| SENIOR POLICY ASSOCIATE                    | 00838A | 1.0     | 111,959   | 1.0     | 111,959   |
| DIRECTOR OF INTERGOVERNMENTAL RELATIONS    | 00840A | 1.0     | 109,752   | 1.0     | 115,142   |
| STAFF ATTORNEY V (JUDICIAL)                | 08836A | 1.0     | 93,762    | 1.0     | 93,762    |
| DEPUTY DIRECTOR-COMMUNITY AFFAIRS          | 00834A | 2.0     | 185,184   | 2.0     | 185,184   |
| STAFF ATTORNEY V                           | 00836A | 3.0     | 276,471   | 3.0     | 286,106   |
| DEPUTY ADMINISTRATOR/CLERK                 | 00834A | 3.0     | 267,398   | 3.0     | 267,398   |
| DEPUTY DIRECTOR                            | 00832A | 1.0     | 85,260    | 1.0     | 85,260    |
| STAFF ATTORNEY III                         | 00832A | 8.0     | 649,796   | 8.0     | 653,117   |
| EXECUTIVE DIRECTOR/EXECUTIVE               | 08831A | 1.0     | 80,502    | 1.0     | 84,605    |
| PROJECT MANAGER (JUDICIAL)                 | 08830A | 1.0     | 78,728    | 1.0     | 78,728    |
| EXECUTIVE DIRECTOR                         | 00136A | 1.0     | 75,153    | 1.0     | 75,153    |
| EXECUTIVE DIRECTOR/EXECUTIVE               | 00831A | 2.0     | 149,539   | 2.0     | 149,539   |
| PRIN PLANNING & PROG SPEC                  | 05328A | 2.0     | 144,900   | 2.0     | 144,900   |
| COURT REPORTER                             | 00127A | 16.0    | 1,066,918 | 16.0    | 1,073,074 |
| ASSISTANT INTAKE SUPERVISOR (FAMILY COURT) | 00128A | 6.0     | 399,236   | 6.0     | 400,593   |
| ASSOCIATE EXECUTIVE ASSISTANT              | 00826A | 1.0     | 61,485    | 1.0     | 61,485    |
| PRINCIPAL SUPERVISORY CLERK                | 00130A | 1.0     | 60,475    | 1.0     | 60,475    |
| COORDINATOR SPECIAL PROJECTS (JUCICIAL)    | 08827A | 2.0     | 120,057   | 2.0     | 124,296   |
| CASA COORDINATOR                           | 00822A | 1.0     | 59,935    | 1.0     | 59,935    |
| SOCIAL CASEWORKER II (JUDICIAL)            | 00824A | 8.0     | 472,947   | 8.0     | 474,561   |
| SUPERVISING DEPUTY CLERK (FAMILY COURT)    | 00822A | 6.0     | 336,835   | 6.0     | 336,835   |
| VOLUNTEER COORDINATOR                      | 00822A | 1.0     | 54,752    | 1.0     | 54,752    |
| ADMINISTRATIVE ASSISTANT                   | 05320A | 1.0     | 53,167    | 1.0     | 53,167    |
| ADMINISTRATIVE COORDINATOR                 | 00820A | 1.0     | 53,167    | 1.0     | 53,167    |
| MEDIATION COUNSELOR                        | 00820A | 5.0     | 263,016   | 5.0     | 263,016   |
| DEPUTY CLERK                               | 00120A | 22.0    | 1,134,071 | 22.0    | 1,140,265 |
| EXECUTIVE SECRETARY                        | 00823A | 2.0     | 101,698   | 2.0     | 103,224   |
| SENIOR ADMINISTRATIVE AIDE                 | 00817A | 3.0     | 147,039   | 3.0     | 147,039   |
| ELECTRONIC COURT REPORTER                  | 00119A | 8.6     | 397,114   | 8.6     | 401,558   |
| SOCIAL CASEWORKER (JUDICIAL)               | 0J322A | 2.0     | 91,220    | 2.0     | 94,028    |
| ADMINISTRATIVE ASSISTANT                   | 00815A | 2.0     | 82,061    | 2.0     | 82,061    |
| SENIOR DATA ENTRY OPERATOR                 | 00812A | 14.5    | 586,548   | 14.5    | 587,187   |
| DOMESTIC VIOLENCE LIAISON                  | 00818A | 1.0     | 40,268    | 1.0     | 41,237    |
| ADMINISTRATIVE ASSISTANT II                | 08815A | 0.6     | 23,679    | 0.6     | 23,679    |
| ADMINISTRATIVE ASSISTANT (JUDICIAL)        | 08814A | 1.0     | 38,156    | 1.0     | 38,872    |
| FISCAL CLERK                               | 00010A | 1.0     | 37,918    | 1.0     | 37,918    |
| CLERK TYPIST                               | 00305A | 1.0     | 36,585    | 1.0     | 36,585    |

# Personnel

## Judicial Department - Constitution Family Court

|   | Grade  | FY 2013      |                     | FY 2014      |                     |
|---|--------|--------------|---------------------|--------------|---------------------|
|   |        | FTE          | Cost                | FTE          | Cost                |
| CLERK SECRETARY   | 00314A | 1.0          | 35,121              | 1.0          | 35,121              |
| DATA ENTRY AIDE   | 05410A | 14.0         | 483,823             | 14.0         | 485,742             |
| <b>Subtotal</b>   |        | <b>173.7</b> | <b>\$12,341,383</b> | <b>173.7</b> | <b>\$12,396,410</b> |
| Overtime  |        | -            | 46,841              | -            | 46,841              |
| Turnover  |        | -            | (946,830)           | -            | (585,059)           |
| <b>Subtotal</b>   |        | <b>-</b>     | <b>(\$899,989)</b>  | <b>-</b>     | <b>(\$538,218)</b>  |
| <b>Total Salaries</b>   |        | <b>173.7</b> | <b>\$11,441,394</b> | <b>173.7</b> | <b>\$11,858,192</b> |
| <b>Benefits</b>   |        |              |                     |              |                     |
| Payroll Accrual   |        |              | 61,135              |              | 64,520              |
| FICA  |        |              | 787,883             |              | 828,540             |
| Retiree Health  |        |              | 775,157             |              | 726,872             |
| Health Benefits   |        |              | 1,916,336           |              | 2,072,241           |
| Retirement  |        |              | 2,334,726           |              | 2,726,995           |
| <b>Subtotal</b>   |        |              | <b>\$5,875,237</b>  |              | <b>\$6,419,168</b>  |
| <b>Total Salaries and Benefits</b>                                    |        | <b>173.7</b> | <b>\$17,316,631</b> | <b>173.7</b> | <b>\$18,277,360</b> |
| <b>Cost Per FTE Position (excluding Statewide Benefit Assessment)</b> |        |              | <b>\$99,693</b>     |              | <b>\$105,224</b>    |
| <b>Statewide Benefit Assessment</b>                                   |        |              | <b>\$425,862</b>    |              | <b>\$442,926</b>    |
| <b>Payroll Costs</b>  |        | <b>173.7</b> | <b>\$17,742,493</b> | <b>173.7</b> | <b>\$18,720,286</b> |
| <b>Purchased Services</b>   |        |              |                     |              |                     |
| Information Technology  |        |              | 72,451              |              | 72,451              |
| Clerical and Temporary Services                                       |        |              | 518,285             |              | 474,203             |
| Management & Consultant Services                                      |        |              | 76,000              |              | 76,000              |
| Legal Services  |        |              | 14,000              |              | 14,000              |
| Other Contracts   |        |              | 89,636              |              | 110,000             |
| Training and Educational Services                                     |        |              | 104,531             |              | 104,531             |
| Design and Engineering Services                                       |        |              | 7,385               |              | 7,385               |
| <b>Subtotal</b>   |        |              | <b>\$882,288</b>    |              | <b>\$858,570</b>    |
| <b>Total Personnel</b>  |        | <b>173.7</b> | <b>\$18,624,781</b> | <b>173.7</b> | <b>\$19,578,856</b> |
| <b>Distribution By Source Of Funds</b>                                |        |              |                     |              |                     |
| General Revenue   |        | 156.6        | \$16,439,690        | 156.6        | \$17,431,177        |
| Federal Funds   |        | 17.1         | \$2,185,091         | 17.1         | \$2,147,679         |
| <b>Total All Funds</b>  |        | <b>173.7</b> | <b>\$18,624,781</b> | <b>173.7</b> | <b>\$19,578,856</b> |

# Performance Measures

## Judicial Department - Constitution Family Court

### *Timeliness of Wayward/Delinquent Cases Suitable for Non-Judicial Processing Diversion*

The Family Court has a Juvenile Services Unit that processes cases of juvenile, first-time offenders who have committed less serious offenses to be handled outside of court with no arraignment. The figures below reflect the percentage of cases suitable for non-judicial processing that were diverted within 45 days of filing. [Performance data and targets are provided by calendar year. The 2011 and 2012 Actual figures represent performance data for calendar years 2010 and 2011, respectively. The 2013 Actual figure represents performance data from 1/1/12 through 9/30/12.]

|               | 2011 | 2012 | 2013 | 2014 |
|---------------|------|------|------|------|
| <b>Target</b> | 80%  | 80%  | 80%  | 80%  |
| <b>Actual</b> | 79%  | 78%  | 83%  | --   |

### *Timeliness of Wayward/Delinquent Cases Requiring Court Involvement Adjudication*

The figures below reflect the percentage of cases requiring court involvement that are adjudicated within 180 days of filing. [Performance data and targets are provided by calendar year. The 2011 and 2012 Actual figures represent performance data for calendar years 2010 and 2011, respectively. The 2013 Actual figure represents performance data from 1/1/12 through 9/30/12.]

|               | 2011 | 2012 | 2013 | 2014 |
|---------------|------|------|------|------|
| <b>Target</b> | 75%  | 75%  | 75%  | 75%  |
| <b>Actual</b> | 67%  | 59%  | 55%  | --   |

### *Timeliness of Child Protection Case Adjudication*

The figures below reflect the percentage of child protection cases that are adjudicated within 180 days of filing. [Performance data and targets are provided by calendar year. The 2011 and 2012 Actual figures represent performance data for calendar years 2010 and 2011, respectively. The 2013 Actual figure represents performance data from 1/1/12 through 9/30/12.]

|               | 2011 | 2012 | 2013 | 2014 |
|---------------|------|------|------|------|
| <b>Target</b> | 65%  | 65%  | 65%  | 65%  |
| <b>Actual</b> | 49%  | 39%  | 48%  | --   |

### *Timeliness of Divorce Case Disposition*

The figures below reflect the percentage of divorce cases disposed within 365 days. [Performance data and targets are provided by calendar year. The 2011 and 2012 Actual figures represent performance data for calendar years 2010 and 2011, respectively. The 2013 Actual figure represents performance data from 1/1/12 through 9/30/12.]

|               | 2011 | 2012  | 2013 | 2014 |
|---------------|------|-------|------|------|
| <b>Target</b> | 100% | 100%  | 100% | 100% |
| <b>Actual</b> | 99%  | 99.8% | 97%  | --   |

# The Program

---

## Judicial Department - Constitution District Court

---

### **Program Mission**

Adjudicate the cases within the jurisdiction of the District Court in a timely and fair manner.

Maintain a complete and accurate record for every case.

### **Program Description**

The District Court consists of a chief judge, an administrative judge and associate judges. The court is also served by two magistrates. The program budget for the District Court includes the cost of operation for the Court itself and the operation of the clerk's offices. The District Court handles all misdemeanor cases, all civil cases where the amount in dispute is under \$5,000, trespass and ejection cases between landlords and tenants, and all small claims, which includes certain civil cases where the amount in dispute is under \$2,500. The District Court handles most felony bail hearings in capital and other serious cases. The District Court also holds hearings on commitments under the mental health and drug abuse laws and handles certain agency appeals. The Court has four locations, in Providence, Kent, Newport and Washington Counties, with a clerk's office at each location. The clerks' offices maintain all the records for the Court. As with the other courts, all papers are filed in the clerk's office. The office creates a file for every case and maintains an up-to-date record on what has happened in the case. In addition, the Pretrial Services Unit was established in FY 2002 to provide pre-arraignment and post-arraignment services to defendants.

### **Statutory History**

The District Court is a statutorily authorized court. The powers and jurisdiction of the Court are defined in Title 8 Chapter 8 of the Rhode Island General Laws.

# Personnel

## Judicial Department - Constitution

### District Court

|   | Grade  | FY 2013     |                    | FY 2014     |                    |
|---|--------|-------------|--------------------|-------------|--------------------|
|   |        | FTE         | Cost               | FTE         | Cost               |
| <b>Unclassified</b>                       |        |             |                    |             |                    |
| CHIEF JUDGE DISTRICT COURT                | 08807F | 1.0         | 180,541            | 1.0         | 180,541            |
| ADMINISTRATIVE JUDGE                      | 08805F | 1.0         | 175,318            | 1.0         | 175,318            |
| MAGISTRATE                                | 08803F | 1.0         | 167,876            | 1.0         | 167,876            |
| CLERK/MAGISTRATE                          | 08803F | 1.0         | 164,379            | 1.0         | 164,379            |
| ASSOCIATE JUDGE, DISTRICT COURT           | 08810F | 11.0        | 1,731,319          | 11.0        | 1,731,319          |
| ADMIN CLERK (SUPERIOR COURT)              | 00846A | 1.0         | 155,832            | 1.0         | 155,832            |
| DEPUTY EXECUTIVE                          | 00841A | 1.0         | 122,191            | 1.0         | 127,375            |
| CHIEF CLERK OF DISTRICT COURTS            | 00840A | 1.0         | 99,085             | 1.0         | 103,981            |
| ASSISTANT ADMINISTRATOR/POLICY & PROGRAMS | 00837A | 2.0         | 186,982            | 2.0         | 189,925            |
| CLERK (WASHINGTON COUNTY)                 | 00832A | 1.0         | 87,806             | 1.0         | 87,806             |
| CLERK (NEWPORT COUNTY)                    | 00832A | 1.0         | 86,860             | 1.0         | 86,860             |
| ADMINISTRATIVE CLERK (DISTRICT COURT)     | 00833A | 1.0         | 83,644             | 1.0         | 83,644             |
| SPECIAL ASSISTANT                         | 00829A | 1.0         | 83,006             | 1.0         | 83,006             |
| ADMINISTRATIVE CLERK                      | 00029A | 2.0         | 146,928            | 2.0         | 146,928            |
| ADMINISTRATIVE CLERK OF OFFICE SERVICES   | 04427A | 1.0         | 65,290             | 1.0         | 65,290             |
| SUPERVISING CLERK                         | 08626A | 2.0         | 130,476            | 2.0         | 133,197            |
| DEPUTY CLERK I                            | 00124A | 3.0         | 189,067            | 3.0         | 189,067            |
| DEPUTY CHIEF INVESTIGATOR                 | 05426A | 2.0         | 123,919            | 2.0         | 123,919            |
| OFFICE MANAGER                            | 00824A | 2.0         | 120,392            | 2.0         | 120,392            |
| ASSOC EXECUTIVE ASST (JUDICIAL            | 08826A | 1.0         | 58,557             | 1.0         | 58,557             |
| COORDINATOR SPECIAL PROJECTS (JUCICIAL)   | 08827A | 1.0         | 56,573             | 1.0         | 56,573             |
| SUPERVISING DEPUTY CLERK-TRAINING OFFICER | 00823A | 16.0        | 867,562            | 16.0        | 876,231            |
| ASSISTANT CLERK/RESEARCH                  | 00818A | 1.0         | 49,831             | 1.0         | 49,831             |
| GENERAL OPERATIONS ASSISTANT              | 00114A | 1.0         | 43,116             | 1.0         | 43,116             |
| ADMINISTRATIVE ASSISTANT                  | 05316A | 1.0         | 41,781             | 1.0         | 41,781             |
| SENIOR OPERATIONS CLERK                   | 04416A | 4.0         | 161,531            | 4.0         | 164,072            |
| RECORDS CLERK/DATA ENTRY AIDE             | 00110A | 19.0        | 647,838            | 19.0        | 649,925            |
| DATA ENTRY AIDE                           | 05410A | 1.0         | 33,361             | 1.0         | 33,361             |
| DATA ENTRY OPERATOR                       | 00812A | 11.0        | 364,495            | 11.0        | 364,495            |
| RECORDS AIDE (JUDICIARY)                  | 04410A | 1.0         | 31,193             | 1.0         | 31,753             |
| <b>Subtotal</b>                           |        | <b>93.0</b> | <b>\$6,456,749</b> | <b>93.0</b> | <b>\$6,486,350</b> |
| Overtime                                  |        | -           | 24,713             | -           | 24,713             |
| Turnover                                  |        | -           | (406,000)          | -           | -                  |
| <b>Subtotal</b>                           |        | -           | <b>(\$381,287)</b> | -           | <b>\$24,713</b>    |
| <b>Total Salaries</b>                     |        | <b>93.0</b> | <b>\$6,075,462</b> | <b>93.0</b> | <b>\$6,511,063</b> |
| <b>Benefits</b>                           |        |             |                    |             |                    |
| Payroll Accrual                           |        |             | 33,449             |             | 36,436             |
| FICA                                      |        |             | 412,942            |             | 449,771            |
| Retiree Health                            |        |             | 434,567            |             | 340,374            |
| Health Benefits                           |        |             | 1,105,797          |             | 1,324,835          |
| Retirement                                |        |             | 1,396,173          |             | 1,741,388          |
| <b>Subtotal</b>                           |        |             | <b>\$3,382,928</b> |             | <b>\$3,892,804</b> |

# Personnel

## Judicial Department - Constitution District Court

|   | Grade | FY 2013 |             | FY 2014 |              |
|---|-------|---------|-------------|---------|--------------|
|   |       | FTE     | Cost        | FTE     | Cost         |
| <b>Total Salaries and Benefits</b>                                    |       | 93.0    | \$9,458,390 | 93.0    | \$10,403,867 |
| <b>Cost Per FTE Position (excluding Statewide Benefit Assessment)</b> |       |         | \$101,703   |         | \$111,870    |
| <b>Statewide Benefit Assessment</b>                                   |       |         | \$232,753   |         | \$243,238    |
| <b>Payroll Costs</b>  |       | 93.0    | \$9,691,143 | 93.0    | \$10,647,105 |
| <b>Purchased Services</b>   |       |         |             |         |              |
| Clerical and Temporary Services                                       |       |         | 237,183     |         | 182,976      |
| Legal Services  |       |         | 4,601       |         | 4,601        |
| Other Contracts   |       |         | 35,000      |         | 35,000       |
| <b>Subtotal</b>   |       |         | \$276,784   |         | \$222,577    |
| <b>Total Personnel</b>  |       | 93.0    | \$9,967,927 | 93.0    | \$10,869,682 |
| <b>Distribution By Source Of Funds</b>                                |       |         |             |         |              |
| General Revenue   |       | 90.0    | \$9,716,779 | 90.0    | \$10,665,128 |
| Federal Funds   |       | -       | \$54,207    | -       | -            |
| Restricted Receipts   |       | 3.0     | \$196,941   | 3.0     | \$204,554    |
| <b>Total All Funds</b>  |       | 93.0    | \$9,967,927 | 93.0    | \$10,869,682 |



# Performance Measures

---

## Judicial Department - Constitution District Court

---

### *Timeliness of Misdemeanor Case Disposition*

The figures below reflect the percentage of misdemeanor cases disposed within 60 days of filing. [Performance data and targets are provided by calendar year. The 2011 and 2012 Actual figures represent performance data for calendar years 2010 and 2011, respectively. The 2013 Actual figure represents performance data from 1/1/12 through 9/30/12.]

|               | 2011 | 2012 | 2013 | 2014 |
|---------------|------|------|------|------|
| <b>Target</b> | 90%  | 90%  | 90%  | 90%  |
| <b>Actual</b> | 77%  | 75%  | 74%  | --   |

# The Program

---

## Judicial Department - Constitution Traffic Tribunal

---

### **Program Mission**

Adjudicate the cases within the jurisdiction of the Traffic Tribunal in a timely and fair manner.

Maintain a complete and accurate record for every case.

### **Program Description**

The Traffic Tribunal was created effective July 1, 1999. It is the successor to the Administrative Adjudication Court. It consists of associate judges and magistrates. It is under the supervision of the chief magistrate, who is the administrative head of the Traffic Tribunal with the power to make rules for regulating practice, procedure and business within the Traffic Tribunal.

The Traffic Tribunal hears and determines civil traffic violations. It has exclusive jurisdiction over certain offenses and concurrent jurisdiction with the municipal courts over others. The Traffic Tribunal hears certain administrative appeals for the Registry of Motor Vehicles. The appeals panel of the Traffic Tribunal hears appeals from the Traffic Tribunal and the municipal courts. The Traffic Tribunal does not hear those offenses committed in places within the exclusive jurisdiction of the United States, or criminal motor vehicle offenses such as driving so as to endanger resulting in death, and driving while under the influence of alcohol and drugs, which state law specifies will be heard under the jurisdiction of other courts. The Traffic Tribunal currently sits at its main courthouse in the John O. Pastore Center, 670 New London Avenue in Cranston; Traffic Tribunal also sits in Wakefield.

### **Statutory History**

The powers and jurisdiction of the Traffic Tribunal are defined in Title 8 Chapter 8.2 of the Rhode Island General Laws. The 1999 session of the General Assembly passed Senate Bill S932 entitled the Rhode Island Traffic Safety and Accountability Act of 1999. This act abolished the Administrative Adjudication Court effective July 1, 1999 and created the Traffic Tribunal.

# The Budget

---

## Judicial Department - Constitution Traffic Tribunal

---

|   | 2011<br>Audited    | 2012<br>Audited    | 2013<br>Enacted    | 2013<br>Revised    | 2014<br>Recommend  |
|---|--------------------|--------------------|--------------------|--------------------|--------------------|
| <b>Expenditures By Subprogram</b>       |                    |                    |                    |                    |                    |
| Operations                              | 7,572,756          | 8,192,012          | 8,191,888          | 7,933,583          | 8,190,350          |
| <b>Total Expenditures</b>               | <b>\$7,572,756</b> | <b>\$8,192,012</b> | <b>\$8,191,888</b> | <b>\$7,933,583</b> | <b>\$8,190,350</b> |
| <b>Expenditures By Object</b>           |                    |                    |                    |                    |                    |
| Personnel                               | 6,719,209          | 7,276,173          | 7,277,230          | 7,111,988          | 7,326,786          |
| Operating Supplies and Expenses         | 304,605            | 373,181            | 347,065            | 356,805            | 356,805            |
| Assistance and Grants                   | 469,500            | 483,586            | 531,945            | 429,142            | 471,111            |
| <b>Subtotal: Operating Expenditures</b> | <b>7,493,314</b>   | <b>8,132,940</b>   | <b>8,156,240</b>   | <b>7,897,935</b>   | <b>8,154,702</b>   |
| Capital Purchases and Equipment         | 79,442             | 59,072             | 35,648             | 35,648             | 35,648             |
| <b>Total Expenditures</b>               | <b>\$7,572,756</b> | <b>\$8,192,012</b> | <b>\$8,191,888</b> | <b>\$7,933,583</b> | <b>\$8,190,350</b> |
| <b>Expenditures By Funds</b>            |                    |                    |                    |                    |                    |
| General Revenue                         | 7,572,756          | 8,192,012          | 8,191,888          | 7,933,583          | 8,190,350          |
| <b>Total Expenditures</b>               | <b>\$7,572,756</b> | <b>\$8,192,012</b> | <b>\$8,191,888</b> | <b>\$7,933,583</b> | <b>\$8,190,350</b> |

# Personnel

## Judicial Department - Constitution

### Traffic Tribunal

|   | Grade   | FY 2013     |                    | FY 2014     |                    |
|---|---------|-------------|--------------------|-------------|--------------------|
|   |         | FTE         | Cost               | FTE         | Cost               |
| <b>Unclassified</b>                       |         |             |                    |             |                    |
| CHIEF MAGISTRATE                          | 08810F  | 1.0         | 168,739            | 1.0         | 168,739            |
| JUDGE ADMINISTRATIVE ADJUDICATION COURT   | 08803F  | 3.0         | 498,719            | 3.0         | 498,719            |
| MAGISTRATE TRAFFIC TRIBUNAL               | 00803F  | 4.0         | 640,030            | 4.0         | 640,030            |
| EXECUTIVE DIRECTOR (JUDICIAL)             | 00844A  | 1.0         | 138,370            | 1.0         | 138,370            |
| ADMINISTRATOR/ADMINISTRATIVE              | 00838A  | 1.0         | 109,303            | 1.0         | 109,303            |
| ASSISTANT ADMINISTRATOR/POLICY & PROGRAMS | 00837A  | 1.0         | 86,696             | 1.0         | 86,696             |
| PRINCIPAL SUPERVISORY CLERK               | 00130A  | 1.0         | 80,439             | 1.0         | 80,439             |
| ADMINISTRATIVE CLERK OF OFFICE SERVICES   | 04427A  | 2.0         | 143,333            | 2.0         | 143,333            |
| COORDINATOR SPECIAL PROJECTS (JUCICIAL)   | 08827A  | 1.0         | 71,602             | 1.0         | 71,602             |
| BUSINESS MANAGEMENT OFFICER (COURTS)      | 00835A  | 1.0         | 71,099             | 1.0         | 71,099             |
| PROJECT COORDINATOR                       | 00026A  | 1.0         | 65,520             | 1.0         | 65,520             |
| DEPUTY CLERK I                            | 00124A  | 2.0         | 123,977            | 2.0         | 123,977            |
| ASSISTANT LEGAL COUNSEL (TRANSPORTATION)  | 00822A  | 0.6         | 35,961             | 0.6         | 35,961             |
| PRIN ASSISTANT ADMINISTRATOR              | 00325AA | 3.0         | 171,610            | 3.0         | 171,610            |
| ADMINISTRATIVE CLERK I                    | 04429A  | 1.0         | 56,819             | 1.0         | 56,819             |
| ADMINISTRATIVE CLERK                      | 00029A  | 0.6         | 34,091             | 0.6         | 34,091             |
| PRINCIPAL AUDITOR                         | 00828A  | 1.0         | 55,994             | 1.0         | 55,994             |
| SUPERVISING DEPUTY CLERK-TRAINING OFFICER | 00823A  | 1.0         | 54,445             | 1.0         | 56,736             |
| DEPUTY CLERK                              | 00120A  | 5.0         | 259,309            | 5.0         | 259,309            |
| SECURITY OFFICER                          | 04419A  | 9.0         | 418,175            | 9.0         | 419,450            |
| SENIOR OPERATIONS CLERK                   | 04416A  | 2.0         | 90,698             | 2.0         | 90,698             |
| GENERAL OPERATIONS ASSISTANT              | 00114A  | 6.0         | 253,882            | 6.0         | 253,882            |
| ADMINISTRATIVE ASSISTANT                  | 00813A  | 5.0         | 201,311            | 5.0         | 201,311            |
| ASSISTANT ADMINISTRATIVE SECRETARY        | 04412A  | 1.0         | 38,419             | 1.0         | 38,419             |
| DATA ENTRY OPERATOR                       | 00812A  | 10.0        | 373,708            | 10.0        | 373,708            |
| RECORDS CLERK/DATA ENTRY AIDE             | 00110A  | 14.0        | 472,292            | 14.0        | 474,741            |
| COURT INTERPRETER-SEASONAL                | 00273H  | -           | 46,800             | -           | 46,800             |
| <b>Subtotal</b>                           |         | <b>78.2</b> | <b>\$4,761,341</b> | <b>78.2</b> | <b>\$4,767,356</b> |
| Overtime                                  |         | -           | 48,737             | -           | 48,737             |
| Turnover                                  |         | -           | (416,053)          | -           | (416,053)          |
| <b>Subtotal</b>                           |         | -           | <b>(\$367,316)</b> | -           | <b>(\$367,316)</b> |
| <b>Total Salaries</b>                     |         | <b>78.2</b> | <b>\$4,394,025</b> | <b>78.2</b> | <b>\$4,400,040</b> |
| <b>Benefits</b>                           |         |             |                    |             |                    |
| Payroll Accrual                           |         |             | 24,098             |             | 24,517             |
| FICA                                      |         |             | 301,889            |             | 304,690            |
| Retiree Health                            |         |             | 299,346            |             | 294,076            |
| Health Benefits                           |         |             | 824,585            |             | 888,823            |
| Retirement                                |         |             | 1,001,353          |             | 1,098,966          |
| <b>Subtotal</b>                           |         |             | <b>\$2,451,271</b> |             | <b>\$2,611,072</b> |

# Personnel

## Judicial Department - Constitution Traffic Tribunal

|   | Grade | FY 2013 |             | FY 2014 |             |
|---|-------|---------|-------------|---------|-------------|
|   |       | FTE     | Cost        | FTE     | Cost        |
| <b>Total Salaries and Benefits</b>                                    |       | 78.2    | \$6,845,296 | 78.2    | \$7,011,112 |
| <b>Cost Per FTE Position (excluding Statewide Benefit Assessment)</b> |       |         | \$87,536    |         | \$89,656    |
| <b>Statewide Benefit Assessment</b>                                   |       |         | \$162,948   |         | \$163,174   |
| <b>Payroll Costs</b>  |       | 78.2    | \$7,008,244 | 78.2    | \$7,174,286 |
| <b>Purchased Services</b>   |       |         |             |         |             |
| Other Contracts   |       |         | 103,744     |         | 152,500     |
| <b>Subtotal</b>   |       |         | \$103,744   |         | \$152,500   |
| <b>Total Personnel</b>  |       | 78.2    | \$7,111,988 | 78.2    | \$7,326,786 |
| <b>Distribution By Source Of Funds</b>                                |       |         |             |         |             |
| General Revenue   |       | 78.2    | \$7,111,988 | 78.2    | \$7,326,786 |
| <b>Total All Funds</b>  |       | 78.2    | \$7,111,988 | 78.2    | \$7,326,786 |

# Performance Measures

---

## Judicial Department - Constitution Traffic Tribunal

---

### *Timeliness of Summonses Disposition*

The figures below reflect the percentage of traffic summonses disposed within 60 days. [Performance data and targets are provided by calendar year. The 2011 and 2012 Actual figures represent performance data for calendar years 2010 and 2011, respectively. The 2013 Actual figure represents performance data from 1/1/12 through 9/30/12.]

|               | 2011 | 2012 | 2013 | 2014 |
|---------------|------|------|------|------|
| <b>Target</b> | 100% | 100% | 100% | 100% |
| <b>Actual</b> | 96%  | 96%  | 96%  | --   |

# The Program

---

## Judicial Department - Constitution Worker's Compensation Court

---

### **Program Mission**

Hear all disputes regarding workers' compensation claims.

Decide all controversies efficiently, effectively, and economically.

### **Program Description**

The Workers' Compensation Court is a member of the unified judicial system and has the same authority and power to subpoena and to cite and punish for civil contempt as exists in the Superior Court. It hears and decides all controversies as they pertain to Workers' Compensation in an efficient, effective, and economical manner. Presently, it has nine judges and one chief judge as well as support staff which includes administrators, hearing reporters, and clerical staff. It is supported from the Workers' Compensation Administrative Fund.

Upon the filing of a petition for benefits arising out of a work-related injury case, a case file is set up and notices are sent to all parties. Before proceeding to a full evidentiary hearing, a judge conducts a pretrial conference, with a view of expediting the case and reducing the issues in dispute to a minimum. If the matter can not be resolved informally the judge must enter a pretrial order as to the right of the employee to receive benefits (approximately 70 percent of all litigation is concluded at this point).

Those cases not resolved at pretrial are heard by the same judge for trial. At the trial, a judge will hear all questions. The judge will then decide the merits of the controversy pursuant to the law and a fair preponderance of the evidence. From this decision a decree is entered. At this stage either party may appeal to the Appellate Division. The Appellate Division consists of three judges assigned by the Chief Judge, none of whom is the Trial Judge.

The Appellate Division judges review the transcript and the record of the case along with the appellant's reasons for appeal and memoranda of law. The Appellate Division then decides the matter and a final decree of the Appellate Division is entered. If either party is aggrieved by the decision of the Appellate Division, they may petition the Supreme Court for a writ of certiorari. Upon petition, the Supreme Court may review any decree of the Workers' Compensation Court.

### **Statutory History**

Title 28, Chapters 29 through 38 of the Rhode Island General Laws includes provisions relating to the Workers' Compensation Court.

# The Budget

---

## Judicial Department - Constitution Worker's Compensation Court

---

|   | 2011<br>Audited    | 2012<br>Audited    | 2013<br>Enacted    | 2013<br>Revised    | 2014<br>Recommend  |
|---|--------------------|--------------------|--------------------|--------------------|--------------------|
| <b>Expenditures By Subprogram</b>       |                    |                    |                    |                    |                    |
| Operations                              | 7,273,592          | 7,204,814          | 7,725,081          | 7,693,329          | 7,842,060          |
| <b>Total Expenditures</b>               | <b>\$7,273,592</b> | <b>\$7,204,814</b> | <b>\$7,725,081</b> | <b>\$7,693,329</b> | <b>\$7,842,060</b> |
| <b>Expenditures By Object</b>           |                    |                    |                    |                    |                    |
| Personnel                               | 5,881,697          | 5,882,794          | 6,418,879          | 6,273,705          | 6,399,778          |
| Operating Supplies and Expenses         | 440,237            | 494,225            | 539,676            | 590,440            | 611,098            |
| Assistance and Grants                   | 843,994            | 797,935            | 738,523            | 803,181            | 803,181            |
| <b>Subtotal: Operating Expenditures</b> | <b>7,165,928</b>   | <b>7,174,954</b>   | <b>7,697,078</b>   | <b>7,667,326</b>   | <b>7,814,057</b>   |
| Capital Purchases and Equipment         | 107,664            | 29,860             | 28,003             | 26,003             | 28,003             |
| <b>Total Expenditures</b>               | <b>\$7,273,592</b> | <b>\$7,204,814</b> | <b>\$7,725,081</b> | <b>\$7,693,329</b> | <b>\$7,842,060</b> |
| <b>Expenditures By Funds</b>            |                    |                    |                    |                    |                    |
| Restricted Receipts                     | 7,273,592          | 7,204,814          | 7,725,081          | 7,693,329          | 7,842,060          |
| <b>Total Expenditures</b>               | <b>\$7,273,592</b> | <b>\$7,204,814</b> | <b>\$7,725,081</b> | <b>\$7,693,329</b> | <b>\$7,842,060</b> |



# Personnel

## Judicial Department - Constitution Worker's Compensation Court

|   | Grade   | FY 2013     |                    | FY 2014     |                    |
|---|---------|-------------|--------------------|-------------|--------------------|
|   |         | FTE         | Cost               | FTE         | Cost               |
| <b>Classified</b>   |         |             |                    |             |                    |
| COURT REPORTER  | 00029A  | 8.0         | 516,049            | 8.0         | 516,049            |
| <b>Subtotal</b>   |         | <b>8.0</b>  | <b>\$516,049</b>   | <b>8.0</b>  | <b>\$516,049</b>   |
| <b>Unclassified</b>   |         |             |                    |             |                    |
| CHIEF JUDGE, WORKERS COMPENSATION COURT                               | 08807F  | 1.0         | 192,851            | 1.0         | 192,851            |
| JUDGE, WORKERS COMPENSATION COURT                                     | 08810F  | 9.0         | 1,431,848          | 9.0         | 1,431,848          |
| ADMINISTRATIVE CLERK (WORKERS COMP COURT)                             | 08846A  | 1.0         | 157,735            | 1.0         | 157,735            |
| ADMINISTRATOR, WORKERS' COMPENSATION                                  | 00841A  | 1.0         | 124,721            | 1.0         | 124,721            |
| DEPUTY ADMINISTRATOR WORKERS'   | 08837A  | 1.0         | 105,812            | 1.0         | 105,812            |
| MEDICAL ADVISORY BOARD ADMINISTRATOR                                  | 00840A  | 1.0         | 105,074            | 1.0         | 105,074            |
| EXECUTIVE ASSISTANT (JUDICIAL)  | 00336A  | 1.0         | 97,782             | 1.0         | 97,782             |
| ASSISTANT ADMINISTRATOR/POLICY & PROGRAMS                             | 00837A  | 1.0         | 76,227             | 1.0         | 76,227             |
| SENIOR MANAGEMENT ANALYST   | 00823A  | 1.0         | 64,378             | 1.0         | 64,378             |
| EXECUTIVE SECRETARY TO CHIEF JUDGE                                    | 00825A  | 1.0         | 62,061             | 1.0         | 62,061             |
| ADMINISTRATIVE ASSISTANT/CONFIDENTIAL                                 | 08824A  | 3.0         | 176,625            | 3.0         | 176,625            |
| DEPUTY CLERK  | 00120A  | 10.0        | 517,966            | 10.0        | 519,605            |
| SENIOR ASSISTANT ADMINISTRATOR  | 00323AA | 3.0         | 146,069            | 3.0         | 146,069            |
| LAW CLERK (JUDICIARY)   | 08823A  | 2.0         | 96,613             | 2.0         | 96,613             |
| MEDICAL ADVISORY BOARD COORDINATOR                                    | 00818A  | 2.0         | 79,685             | 2.0         | 79,685             |
| DATA ENTRY OPERATOR   | 00812A  | 4.0         | 140,236            | 4.0         | 141,420            |
| <b>Subtotal</b>   |         | <b>42.0</b> | <b>\$3,575,683</b> | <b>42.0</b> | <b>\$3,578,506</b> |
| Overtime  |         | -           | 20,000             | -           | 20,000             |
| Turnover  |         | -           | (76,226)           | -           | (76,225)           |
| <b>Subtotal</b>   |         | -           | <b>(\$56,226)</b>  | -           | <b>(\$56,225)</b>  |
| <b>Total Salaries</b>   |         | <b>50.0</b> | <b>\$4,035,506</b> | <b>50.0</b> | <b>\$4,038,330</b> |
| <b>Benefits</b>   |         |             |                    |             |                    |
| Payroll Accrual   |         |             | 22,265             |             | 22,595             |
| FICA  |         |             | 269,231            |             | 272,308            |
| Retiree Health  |         |             | 280,825            |             | 184,756            |
| Health Benefits   |         |             | 582,113            |             | 629,216            |
| Retirement  |         |             | 859,684            |             | 1,028,386          |
| <b>Subtotal</b>   |         |             | <b>\$2,014,118</b> |             | <b>\$2,137,261</b> |
| <b>Total Salaries and Benefits</b>                                    |         | <b>50.0</b> | <b>\$6,049,624</b> | <b>50.0</b> | <b>\$6,175,591</b> |
| <b>Cost Per FTE Position (excluding Statewide Benefit Assessment)</b> |         |             | <b>\$120,992</b>   |             | <b>\$123,512</b>   |
| <b>Statewide Benefit Assessment</b>                                   |         |             | <b>\$150,581</b>   |             | <b>\$150,687</b>   |
| <b>Payroll Costs</b>  |         | <b>50.0</b> | <b>\$6,200,205</b> | <b>50.0</b> | <b>\$6,326,278</b> |

# Personnel

## Judicial Department - Constitution Worker's Compensation Court

|  | Grade | FY 2013     |                    | FY 2014     |                    |
|--|-------|-------------|--------------------|-------------|--------------------|
|  |       | FTE         | Cost               | FTE         | Cost               |
| <b>Purchased Services</b>              |       |             |                    |             |                    |
| Information Technology                 |       |             | 50,000             |             | 50,000             |
| Legal Services                         |       |             | 10,500             |             | 10,500             |
| Other Contracts                        |       |             | 13,000             |             | 13,000             |
| <b>Subtotal</b>                        |       |             | <b>\$73,500</b>    |             | <b>\$73,500</b>    |
| <b>Total Personnel</b>                 |       | <b>50.0</b> | <b>\$6,273,705</b> | <b>50.0</b> | <b>\$6,399,778</b> |
| <b>Distribution By Source Of Funds</b> |       |             |                    |             |                    |
| Restricted Receipts                    |       | 50.0        | \$6,273,705        | 50.0        | \$6,399,778        |
| <b>Total All Funds</b>                 |       | <b>50.0</b> | <b>\$6,273,705</b> | <b>50.0</b> | <b>\$6,399,778</b> |

# Performance Measures

---

## Judicial Department - Constitution Worker's Compensation Court

---

### *Timeliness of Case Disposition at Pretrial*

The figures below reflect the percentage of workers' compensation claims disposed at pretrial within 90 days of filing. [Performance data and targets are provided by calendar year. The 2011 and 2012 Actual figures represent performance data for calendar years 2010 and 2011, respectively. The 2013 Actual figure represents performance data from 1/1/12 through 9/30/12.]

|               | 2011 | 2012 | 2013 | 2014 |
|---------------|------|------|------|------|
| <b>Target</b> | 90%  | 90%  | 90%  | 90%  |
| <b>Actual</b> | 89%  | 88%  | 88%  | --   |

### *Timeliness of Cases Disposed at Trial*

The figures below reflect the percentage of workers' compensation cases disposed at trial within 360 days of filing. [Performance data and targets are provided by calendar year. The 2011 and 2012 Actual figures represent performance data for calendar years 2010 and 2011, respectively. The 2013 Actual figure represents performance data from 1/1/12 through 9/30/12.]

|               | 2011 | 2012 | 2013 | 2014 |
|---------------|------|------|------|------|
| <b>Target</b> | 90%  | 90%  | 90%  | 90%  |
| <b>Actual</b> | 87%  | 89%  | 89%  | --   |

# The Program

---

## Judicial Department - Constitution Judicial Tenure & Discipline

---

### **Program Mission**

Ensure the integrity of the Rhode Island Court System.

Investigate reasonable allegations of wrongdoing by Rhode Island judges.

Recommend, when appropriate, sanctions to be imposed against Rhode Island judges.

### **Program Description**

The Commission on Judicial Tenure and Discipline, a program of the Rhode Island Judiciary, is responsible for conducting investigations of judges suspected of or charged with misconduct. The commission, upon receiving from any person a verified statement, not unfounded or frivolous, alleging facts indicating that a Justice of the Supreme Court, the Superior Court, the Family Court, the District Court, the Workers' Compensation Court, the Traffic Tribunal and the Probate Court judges or magistrates and judicial officers appointed pursuant to Rhode Island General Laws is guilty of a serious violation of the Code of Judicial Conduct or the Canons of Judicial Ethics, or of a willful and persistent failure to perform his/her duties, or disabling substance abuse, or conduct that brings the judicial office into serious disrepute, or that such a judge has a physical or mental disability that seriously interferes and will continue to interfere with the performance of his/her duties, shall make a preliminary investigation to determine whether formal proceedings shall be instituted and a hearing held. The Commission may, on its own initiative, make such a preliminary investigation, without receiving a verified statement, to determine whether formal proceedings shall be instituted and a hearing held.

When formal proceedings are ordered, the justice is given formal notice of the charges and of the time fixed for a public hearing. The justice is required to appear at the hearing, may be represented by counsel, offer evidence and otherwise participate in said hearing. Recommendation concerning the disciplining of any justice shall be made in a report to the Chief Justice of the Supreme Court. The Supreme Court is required to grant a review if requested by said justice. After the hearing, the Supreme Court may affirm, modify or reject the Commission's recommendation(s).

### **Statutory History**

The Commission on Judicial Tenure and Discipline was established in 1974 under Rhode Island Public Law 1972, Ch. 136, Section 1 for the purpose of conducting investigations upon the filing of a verified complaint or upon its own initiative of the conduct of judges of the Supreme, Superior, Family and District Courts. Subsequent enactments in P.L.1983, Ch. 26 and P.L. 1990, Ch. 332, Article 1, sec. 13 and P.L. 1991, Ch. 132, sec. 2 as well as P.L. 1991, Ch. 205, sec. 2 and P.L. 1996, Ch. 312 enlarged the jurisdiction to include the Workers' Compensation Court, the Traffic Tribunal as well as all judges of Probate Courts in any city or town in the State of Rhode Island. P.L. 2007, Ch. 178 altered the composition of the Commission.

# The Budget

---

## Judicial Department - Constitution Judicial Tenure & Discipline

---

|   | 2011<br>Audited  | 2012<br>Audited  | 2013<br>Enacted  | 2013<br>Revised  | 2014<br>Recommend |
|---|------------------|------------------|------------------|------------------|-------------------|
| <b>Expenditures By Subprogram</b>       |                  |                  |                  |                  |                   |
| Operations                              | 106,076          | 105,450          | 113,609          | 113,327          | 115,627           |
| <b>Total Expenditures</b>               | <b>\$106,076</b> | <b>\$105,450</b> | <b>\$113,609</b> | <b>\$113,327</b> | <b>\$115,627</b>  |
| <b>Expenditures By Object</b>           |                  |                  |                  |                  |                   |
| Personnel                               | 96,447           | 103,324          | 110,994          | 110,712          | 113,012           |
| Operating Supplies and Expenses         | 9,629            | 2,126            | 2,615            | 2,615            | 2,615             |
| <b>Subtotal: Operating Expenditures</b> | <b>106,076</b>   | <b>105,450</b>   | <b>113,609</b>   | <b>113,327</b>   | <b>115,627</b>    |
| <b>Total Expenditures</b>               | <b>\$106,076</b> | <b>\$105,450</b> | <b>\$113,609</b> | <b>\$113,327</b> | <b>\$115,627</b>  |
| <b>Expenditures By Funds</b>            |                  |                  |                  |                  |                   |
| General Revenue                         | 106,076          | 105,450          | 113,609          | 113,327          | 115,627           |
| <b>Total Expenditures</b>               | <b>\$106,076</b> | <b>\$105,450</b> | <b>\$113,609</b> | <b>\$113,327</b> | <b>\$115,627</b>  |

# Personnel

## Judicial Department - Constitution Judicial Tenure & Discipline

|   | Grade  | FY 2013    |                  | FY 2014    |                  |
|---|--------|------------|------------------|------------|------------------|
|   |        | FTE        | Cost             | FTE        | Cost             |
| <b>Unclassified</b>   |        |            |                  |            |                  |
| EXECUTIVE ASSISTANT TO THE CHAIRPERSON                                | 00829A | 1.0        | 69,180           | 1.0        | 69,180           |
| <b>Subtotal</b>   |        | <b>1.0</b> | <b>\$69,180</b>  | <b>1.0</b> | <b>\$69,180</b>  |
| <b>Total Salaries</b>   |        | <b>1.0</b> | <b>\$69,180</b>  | <b>1.0</b> | <b>\$69,180</b>  |
| <b>Benefits</b>   |        |            |                  |            |                  |
| Payroll Accrual   |        |            | 277              |            | 277              |
| FICA  |        |            | 5,292            |            | 5,292            |
| Retiree Health  |        |            | 4,746            |            | 5,283            |
| Health Benefits   |        |            | 5,779            |            | 6,248            |
| Retirement  |        |            | 15,344           |            | 16,638           |
| <b>Subtotal</b>   |        |            | <b>\$31,438</b>  |            | <b>\$33,738</b>  |
| <b>Total Salaries and Benefits</b>                                    |        | <b>1.0</b> | <b>\$100,618</b> | <b>1.0</b> | <b>\$102,918</b> |
| <b>Cost Per FTE Position (excluding Statewide Benefit Assessment)</b> |        |            | <b>\$100,618</b> |            | <b>\$102,918</b> |
| <b>Statewide Benefit Assessment</b>                                   |        |            | <b>\$2,594</b>   |            | <b>\$2,594</b>   |
| <b>Payroll Costs</b>  |        | <b>1.0</b> | <b>\$103,212</b> | <b>1.0</b> | <b>\$105,512</b> |
| <b>Purchased Services</b>   |        |            |                  |            |                  |
| Legal Services  |        |            | 7,500            |            | 7,500            |
| <b>Subtotal</b>   |        |            | <b>\$7,500</b>   |            | <b>\$7,500</b>   |
| <b>Total Personnel</b>  |        | <b>1.0</b> | <b>\$110,712</b> | <b>1.0</b> | <b>\$113,012</b> |
| <b>Distribution By Source Of Funds</b>                                |        |            |                  |            |                  |
| General Revenue   |        | 1.0        | \$110,712        | 1.0        | \$113,012        |
| <b>Total All Funds</b>  |        | <b>1.0</b> | <b>\$110,712</b> | <b>1.0</b> | <b>\$113,012</b> |

# Performance Measures

---

## Judicial Department - Constitution Judicial Tenure & Discipline

---

### *Timeliness of Verified Complaint Disposition*

The figures below reflect the percentage of cases closed during a fiscal year that was disposed within 90 days of docketing. Performance data include both cases filed through the end of a fiscal year and cases that were pending at the beginning of the fiscal year. [Performance data and targets are provided by State fiscal year. The 2013 Actual figure represents performance data from the first four months of FY 2013 (7/1/12 through 10/31/12).]

|               | 2011 | 2012 | 2013 | 2014 |
|---------------|------|------|------|------|
| <b>Target</b> | 100% | 100% | 100% | 100% |
| <b>Actual</b> | 74%  | 71%  | 80%  | --   |