

State of Rhode Island and Providence Plantations

Budget



Fiscal Year 2014

Volume IV – Public Safety, Natural Resources
and Transportation

Lincoln D. Chafee, Governor

Agency

Office Of Public Defender

Agency Mission

To provide high quality representation to all indigents in criminal, juvenile and parental rights litigation, fulfilling the governmental obligation to provide effective assistance of counsel and to secure fundamental fairness and due process to the indigent citizens of Rhode Island.

Agency Description

The Office of the Public Defender is statutorily mandated to represent indigent adults and juveniles who are charged with criminal offenses or who are in jeopardy of losing custody of their children to the State. Referrals come from the Supreme, Superior, District, and Family Courts. All who are financially eligible are assigned to a staff attorney for representation in the appropriate court.

The office carries out a single program: representation of indigents. Within this program are activities associated with adult and juvenile criminal matters, and with termination of parental rights and dependency and neglect petitions filed by the DCYF. The office offers appellate representation in the Rhode Island Supreme Court in those areas in which it offers trial level representation. Assisting the attorneys who deliver the primary service of the office is a support staff of social workers, investigators, interpreters, information technology staff, intake staff and clericals.

The Public Defender is appointed by the Governor with the advice and consent of the Senate for a six-year term.

Statutory History

The Office of the Public Defender was created in 1941 by Chapter 1007 of the Rhode Island Public Laws. It was one of the earliest, and perhaps even the first, statewide Public Defender agencies in the Nation. Title 12, Chapter 15 of the Rhode Island General Laws defines the organization and functions of the agency, and mandates it to represent those who are without financial resources to retain private counsel. Title 14, Chapter 1 describes the referral process by the Family Court, and Title 40, Chapter 11 authorizes referral of dependency, neglect and termination of parental rights cases to the office by the Family Court.

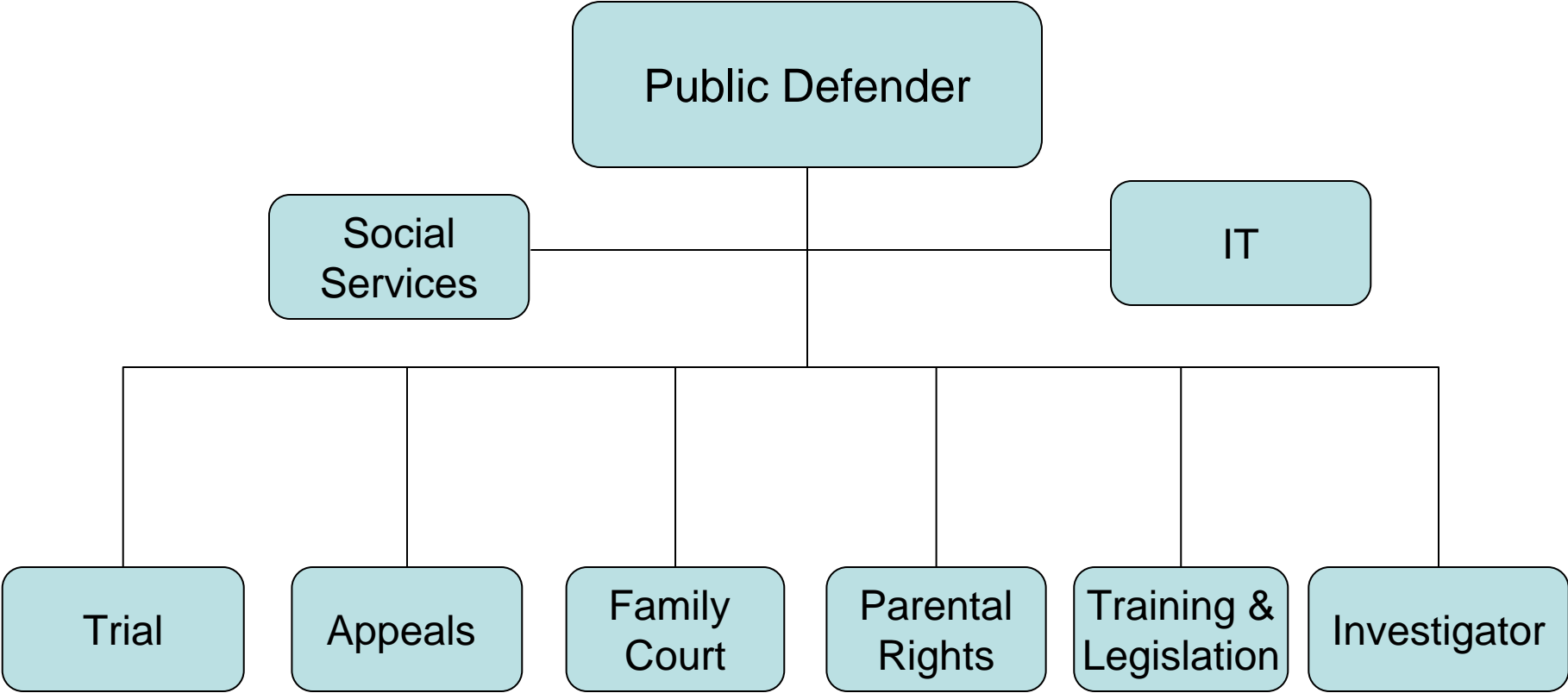
Budget

Office Of Public Defender

	FY 2011 Audited	FY 2012 Audited	FY 2013 Enacted	FY 2013 Revised	FY 2014 Recommend
Expenditures By Program					
Central Management	9,990,894	10,560,860	11,213,124	11,049,410	11,326,682
Total Expenditures	\$9,990,894	\$10,560,860	\$11,213,124	\$11,049,410	\$11,326,682
Expenditures By Object					
Personnel	9,074,432	9,567,553	10,109,772	9,957,682	10,218,257
Operating Supplies and Expenses	807,184	832,970	952,589	962,236	984,258
Assistance and Grants	77,980	115,535	101,596	75,000	75,000
Subtotal: Operating Expenditures	9,959,596	10,516,058	11,163,957	10,994,918	11,277,515
Capital Purchases and Equipment	31,298	44,802	49,167	54,492	49,167
Total Expenditures	\$9,990,894	\$10,560,860	\$11,213,124	\$11,049,410	\$11,326,682
Expenditures By Funds					
General Revenue	9,493,812	10,166,398	10,791,226	10,757,414	11,034,686
Federal Funds	497,082	394,462	421,898	291,996	291,996
Total Expenditures	\$9,990,894	\$10,560,860	\$11,213,124	\$11,049,410	\$11,326,682
FTE Authorization	93.0	92.0	93.0	93.0	93.0

The Agency

Rhode Island Public Defender



Personnel

Office Of Public Defender Central Management

	Grade	FY 2013		FY 2014	
		FTE	Cost	FTE	Cost
Unclassified					
DEPUTY PUBLIC DEFENDER	00843A	1.0	138,165	1.0	138,165
PUBLIC DEFENDER	00845A	1.0	129,623	1.0	134,792
CHIEF/TRIAL DIVISION	00840A	1.0	121,984	1.0	121,984
TRAINER/ASSISTANT PUBLIC DEFENDER	00839A	2.0	233,188	2.0	233,188
STAFF ATTORNEY VII	00840A	3	115,142	1.0	118,044
ASSISTANT PUBLIC DEFENDER	00837A	1.0	103,608	1.0	103,608
ASSISTANT PUBLIC DEFENDER I	00836A	6.0	596,663	6.0	596,663
DIRECTOR OF PUBLIC INFORMATION	00839A	1.0	88,695	1.0	93,187
ASSISTANT PUBLIC DEFENDER II	00834A	6.0	529,096	6.0	529,096
EXECUTIVE ASSISTANT	00833A	1.0	84,379	1.0	84,379
STAFF ATTORNEY IV	00834A	1.0	83,541	1.0	83,541
ASSISTANT PUBLIC DEFENDER III	00832A	5.0	392,022	5.0	392,022
CHIEF INVESTIGATOR (PUBLIC DEFENDER)	00828A	1.0	72,822	1.0	72,822
STAFF ATTORNEY II	00830A	14.0	978,553	14.0	985,269
PERSONNEL ADMINISTRATOR	00829A	1.0	69,180	1.0	69,180
DEPUTY CHIEF INVESTIGATOR	05426A	1.0	68,827	1.0	68,827
CASEWORK SUPERVISOR	00826A	1.0	61,485	1.0	61,485
ASSISTANT PUBLIC DEFENDER IV	00828A	10.0	602,025	10.0	619,663
ADMINISTRATIVE SUPPORT SPECIALIST	05424A	1.0	58,453	1.0	58,453
INVESTIGATOR I	05423A	2.0	115,263	2.0	115,263
CASE MANAGEMENT COORDINATOR	05019A	5.0	278,594	5.0	278,594
SOCIAL SERVICES CASEWORKER	05021A	5.0	270,430	5.0	272,368
INVESTIGATOR II	05421A	3.0	148,862	3.0	150,138
INTERPRETER (SPANISH)	05420A	2.0	96,817	2.0	96,817
SUPERVISING CLERK	05418A	2	46,099	1.0	46,099
ADMINISTRATIVE SECRETARY	05317A	4.0	174,091	4.0	174,507
CONFIDENTIAL SECRETARY	00817A	1.0	41,784	1.0	41,784
LEGAL SECRETARY I	05415A	4.0	165,752	4.0	165,752
CLERICAL	05413A	1	147,231	4.0	148,231
LEGAL SECRETARY II	05413A	4.0	142,244	4.0	143,548
DATA ENTRY AIDE	05410A	1.0	31,599	1.0	32,155
Subtotal		92.0	\$6,186,217	92.0	\$6,229,624
Nonclassified					
COMMUNITY RELATIONS OFFICER	00818A	1.0	40,862	1.0	42,056
Subtotal		1.0	\$40,862	1.0	\$42,056

Personnel

Office Of Public Defender Central Management

	Grade	FY 2013		FY 2014	
		FTE	Cost	FTE	Cost
Turnover		-	(81,580)	-	(125,430)
Subtotal		-	(\$81,580)	-	(\$125,430)
Total Salaries		93.0	\$6,145,499	93.0	\$6,146,250
Benefits					
Payroll Accrual			33,601		34,289
FICA			470,131		470,188
Retiree Health			421,582		469,068
Health Benefits			962,893		1,034,492
Retirement			1,401,256		1,515,684
Subtotal			\$3,289,463		\$3,523,721
Total Salaries and Benefits		93.0	\$9,434,962	93.0	\$9,669,971
Cost Per FTE Position (excluding Statewide Benefit Assessment)			\$101,451		\$103,978
Statewide Benefit Assessment			\$230,456		\$230,484
Payroll Costs		93.0	\$9,665,418	93.0	\$9,900,455
Purchased Services					
Information Technology			16,920		16,920
Clerical and Temporary Services			228,412		247,930
Legal Services			25,000		30,000
Other Contracts			21,500		22,520
Buildings and Ground Maintenance			432		432
Subtotal			\$292,264		\$317,802
Total Personnel		93.0	\$9,957,682	93.0	\$10,218,257
Distribution By Source Of Funds					
General Revenue		93.0	\$9,751,523	93.0	\$10,012,418
Federal Funds		-	\$206,159	-	\$205,839
Total All Funds		93.0	\$9,957,682	93.0	\$10,218,257

1 Includes one currently vacant Intake Clerical position that has been posted and will be filled within the next two pay periods.

3 Employee going to step 3 on October 7, 2012

2 The agency only has one FTE at this position - supervising Clerk with a 5418 paygrade