

State of Rhode Island and Providence Plantations

Budget



Fiscal Year 2016

Volume I – General Government and Quasi-Public Agencies

Gina M. Raimondo, Governor

Agency

Office Of Lieutenant Governor

Agency Mission

To fulfill the constitutional and statutory functions of the law for the Office of Lieutenant Governor.

Agency Description

The Lieutenant Governor was established as one of the five general offices subject to voter election under the Constitution of Rhode Island. The Office of the Lieutenant Governor is an organization within the Executive Department. The Lieutenant Governor fulfills the executive responsibilities of the Governor upon his/her death, resignation, impeachment or inability to serve. The Lieutenant Governor appoints members of the general public to serve on committees and commissions established by the General Assembly. Additionally, the Lieutenant Governor chairs and serves on various commissions and advisory boards. The Lieutenant Governor was named as chair of Rhode Island Healthcare Reform Commission by executive order in January of 2011. The Office of the Lieutenant Governor initiates legislation and has assumed advocacy and leadership roles in such areas as emergency management, veterans affairs, education, economic development, the environment, long-term care, health care and elderly affairs. The Office also serves as a liaison between citizens and state agencies.

Statutory History

Article IX, Sections 1 and 9 through 11 of the Constitution of Rhode Island specify the Lieutenant Governor's elected power, duties in the case of death, resignation, impeachment of the Governor, responsibilities in the case of a vacancy of position, and compensation. Article IV, Sections 1 and 3 of the Constitution of Rhode Island address the quadrennial election process by the voters of Rhode Island and the transition responsibility for the Lieutenant Governor.

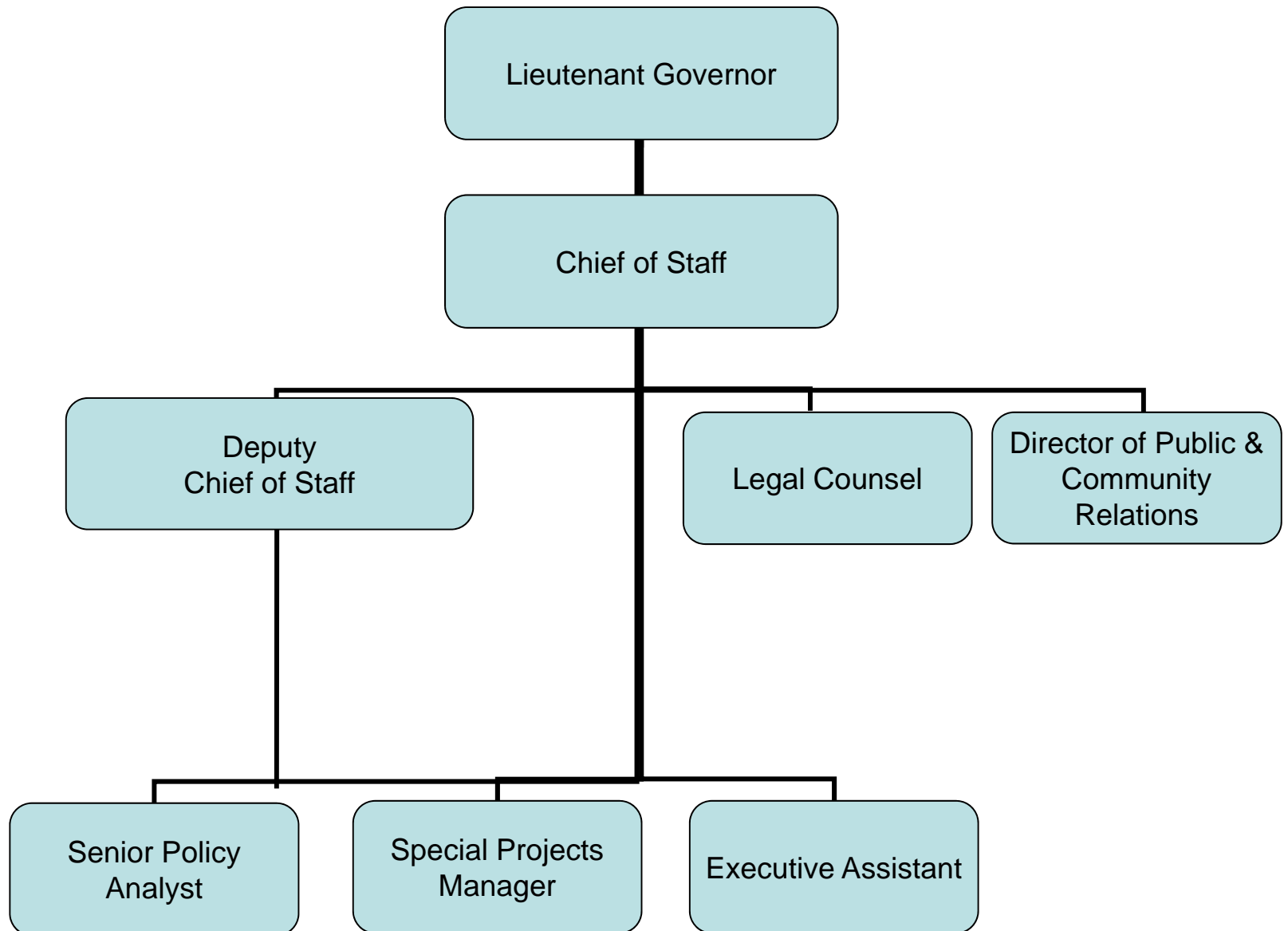
Budget

Office Of Lieutenant Governor

	FY 2013 Audited	FY 2014 Audited	FY 2015 Enacted	FY 2015 Revised	FY 2016 Recommend
Expenditures By Program					
Lt. Governor's Office - General	1,243,608	2,673,290	1,089,434	1,064,842	1,292,621
Total Expenditures	\$1,243,608	\$2,673,290	\$1,089,434	\$1,064,842	\$1,292,621
Expenditures By Object					
Personnel	1,216,901	2,426,953	1,040,901	982,628	1,103,907
Operating Supplies and Expenses	21,529	143,973	47,783	69,464	87,964
Assistance and Grants	-	100,000	-	12,000	100,000
Subtotal: Operating Expenditures	1,238,430	2,670,926	1,088,684	1,064,092	1,291,871
Capital Purchases and Equipment	5,178	2,364	750	750	750
Total Expenditures	\$1,243,608	\$2,673,290	\$1,089,434	\$1,064,842	\$1,292,621
Expenditures By Funds					
General Revenue	942,140	957,446	1,015,084	1,007,208	1,227,621
Federal Funds	301,468	1,583,196	74,350	40,134	65,000
Restricted Receipts	-	132,648	-	17,500	-
Total Expenditures	\$1,243,608	\$2,673,290	\$1,089,434	\$1,064,842	\$1,292,621
FTE Authorization	8.0	8.0	8.0	8.0	8.0

The Agency

Office of Lieutenant Governor



Personnel

Office Of Lieutenant Governor Lt. Governor's Office - General

	Grade	FY 2015		FY 2016	
		FTE	Cost	FTE	Cost
Unclassified					
CHIEF OF STAFF (LT GOV)	08444A	1.0	130,685	1.0	133,299
LIEUTENANT GOVERNOR	00531F	1.0	113,223	1.0	117,637
DIRECTOR OF PUBLIC & COMMUNITY RELATIONS	08455A	1.0	79,807	1.0	81,403
DEPUTY CHIEF OF STAFF (LT GOVERNOR)	08437A	1.0	94,438	1.0	96,327
LEGAL COUNSEL	08426A	-	-	1.0	70,273
SENIOR POLICY ANALYST (LT GOVERNOR)	08427A	1.0	58,538	1.0	59,709
HEALTH POLICY DIRECTOR (LT GOV)	08431A	1.0	68,895	-	-
SPECIAL PROJECTS MANAGER	08422A	1.0	51,964	1.0	53,003
EXECUTIVE ASSISTANT	08436A	1.0	58,538	1.0	59,709
Subtotal		8.0	\$656,088	8.0	\$671,360
Turnover		-	(64,957)	-	(669)
Subtotal		-	(\$64,957)	-	(\$669)
Total Salaries		8.0	\$591,131	8.0	\$670,691
Benefits					
Payroll Accrual			4,601		3,795
FICA			47,859		50,409
Retiree Health			43,129		40,240
Health Benefits			79,350		107,951
Retirement			141,559		161,233
Subtotal			\$316,498		\$363,628
Total Salaries and Benefits		8.0	\$907,629	8.0	\$1,034,319
Cost Per FTE Position (Excluding Temporary and Seasonal)			\$113,454		\$129,290
Statewide Benefit Assessment			\$34,249		\$28,838
Payroll Costs		8.0	\$941,878	8.0	\$1,063,157
Purchased Services					
Other Contracts			40,750		40,750
Subtotal			\$40,750		\$40,750
Total Personnel		8.0	\$982,628	8.0	\$1,103,907
Distribution By Source Of Funds					
General Revenue		7.0	\$958,494	8.0	\$1,103,907
Federal Funds		1.0	\$24,134	-	-
Total All Funds		8.0	\$982,628	8.0	\$1,103,907