

State of Rhode Island and Providence Plantations

# Budget



## Fiscal Year 2016

Volume IV – Public Safety, Natural Resources and Transportation

Gina M. Raimondo, Governor

# Agency

---

## Department Of Attorney General

---

### Agency Mission

To represent the State with regard to the investigation, prosecution, and trial of all felony matters, misdemeanor cases, and appellate matters within its jurisdiction.

To provide public protection on behalf of the people of Rhode Island as citizens, consumers, and taxpayers.

To provide criminal history information and descriptive data on demand to federal and local law enforcement agencies seven days a week, 24-hours a day.

### Agency Description

The Attorney General is established under the Rhode Island Constitution as one of the five general officers subject to election by the voters. As the State's central legal agency, the Attorney General is responsible for the prosecution of all felony criminal cases, misdemeanor appeals, and misdemeanor cases brought by state law enforcement action in the various district courts.

The Attorney General initiates legal action to protect the interests of the citizens of Rhode Island regarding compliance with the Open Meetings Act and the Access to Public Records Act, and protection of the public from deceptive business practices and anti-trust violations. Additionally, the Attorney General provides legal advice to state officers and represents all agencies, departments, and commissions in litigation. The State Bureau of Criminal Identification, the central repository for all criminal records in the State, is operated and maintained by the Attorney General.

The Office of Attorney General is divided into four programs: Criminal, Civil, Bureau of Criminal Identification, and General.

### Statutory History

Article IV, Section 1 of the Rhode Island Constitution and R.I.G.L. 42-9 establish the Office of the Attorney General. R.I.G.L. 12-9 relates to extradition; R.I.G.L. 9-31 relates to governmental tort liability; R.I.G.L. 12-12 relates to indictments and information; R.I.G.L. 12-1 relates to criminal identification; and R.I.G.L. 11-57 relates to weapons.

# Budget

## Department Of Attorney General

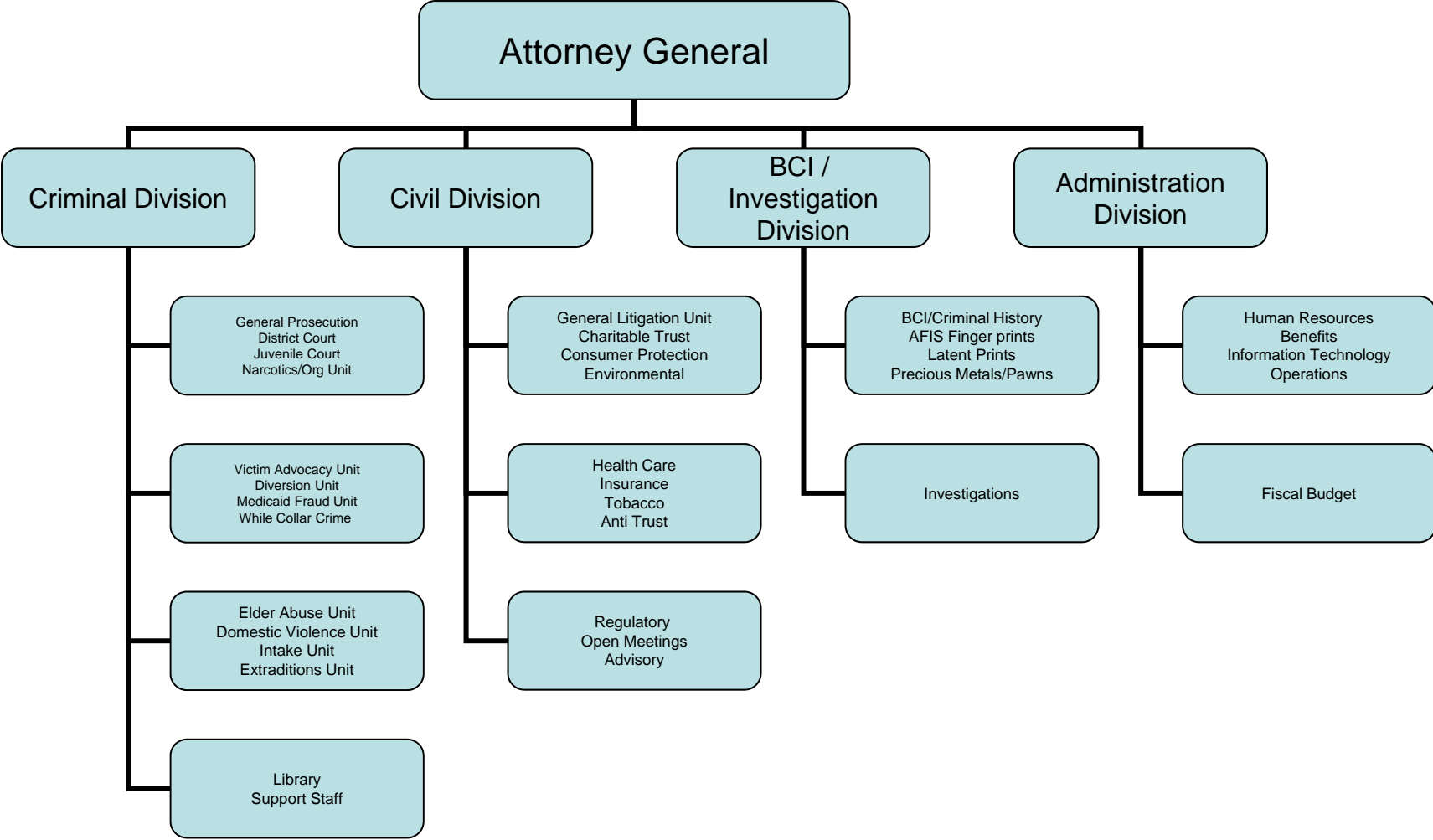
|   | FY 2013<br>Audited  | FY 2014<br>Audited  | FY 2015<br>Enacted  | FY 2015<br>Revised  | FY 2016<br>Recommend |
|---|---------------------|---------------------|---------------------|---------------------|----------------------|
| <b>Expenditures By Program</b>          |                     |                     |                     |                     |                      |
| Criminal                                | 15,560,352          | 21,284,765          | 26,442,544          | 29,372,820          | 17,106,413           |
| Civil                                   | 5,063,030           | 5,485,599           | 5,733,404           | 6,184,174           | 6,182,731            |
| Bureau of Criminal Identification       | 1,385,594           | 1,382,120           | 1,542,124           | 1,575,883           | 1,591,162            |
| General                                 | 3,014,791           | 2,857,513           | 3,073,613           | 3,043,735           | 3,155,011            |
| <b>Total Expenditures</b>               | <b>\$25,023,767</b> | <b>\$31,009,997</b> | <b>\$36,791,685</b> | <b>\$40,176,612</b> | <b>\$28,035,317</b>  |
| <b>Expenditures By Object</b>           |                     |                     |                     |                     |                      |
| Personnel                               | 22,954,764          | 24,457,966          | 25,570,240          | 29,147,701          | 25,634,869           |
| Operating Supplies and Expenses         | 1,525,578           | 1,974,298           | 3,226,111           | 3,705,930           | 1,902,815            |
| <b>Subtotal: Operating Expenditures</b> | <b>24,480,342</b>   | <b>26,432,264</b>   | <b>28,796,351</b>   | <b>32,853,631</b>   | <b>27,537,684</b>    |
| Capital Purchases and Equipment         | 543,425             | 4,577,733           | 7,995,334           | 7,322,981           | 497,633              |
| <b>Total Expenditures</b>               | <b>\$25,023,767</b> | <b>\$31,009,997</b> | <b>\$36,791,685</b> | <b>\$40,176,612</b> | <b>\$28,035,317</b>  |
| <b>Expenditures By Funds</b>            |                     |                     |                     |                     |                      |
| General Revenue                         | 22,301,954          | 23,235,530          | 23,607,146          | 24,544,068          | 25,193,210           |
| Federal Funds                           | 1,390,205           | 1,648,980           | 1,634,631           | 2,679,629           | 1,291,777            |
| Restricted Receipts                     | 923,413             | 5,900,916           | 11,249,908          | 12,702,915          | 1,250,330            |
| Operating Transfers from Other Funds    | 408,195             | 224,571             | 300,000             | 250,000             | 300,000              |
| <b>Total Expenditures</b>               | <b>\$25,023,767</b> | <b>\$31,009,997</b> | <b>\$36,791,685</b> | <b>\$40,176,612</b> | <b>\$28,035,317</b>  |
| <b>FTE Authorization</b>                | <b>233.1</b>        | <b>233.1</b>        | <b>236.1</b>        | <b>236.1</b>        | <b>236.1</b>         |

# The Agency

---

## Attorney General

---



# Personnel

## Department Of Attorney General Agency Summary

|   | Grade | FY 2015      |                     | FY 2016      |                     |
|---|-------|--------------|---------------------|--------------|---------------------|
|   |       | FTE          | Cost                | FTE          | Cost                |
| Unclassified  |       | 236.1        | 15,729,653          | 236.1        | 16,151,507          |
| <b>Subtotal</b>   |       | <b>236.1</b> | <b>\$15,729,653</b> | <b>236.1</b> | <b>\$16,151,507</b> |
| Turnover  |       | -            | (\$475,421)         | -            | (\$762,109)         |
| <b>Subtotal</b>   |       | <b>-</b>     | <b>(\$475,421)</b>  | <b>-</b>     | <b>(\$762,109)</b>  |
| <b>Total Salaries</b>   |       | <b>236.1</b> | <b>\$15,254,232</b> | <b>236.1</b> | <b>\$15,389,398</b> |
| <b>Benefits</b>   |       |              |                     |              |                     |
| Payroll Accrual   |       |              | 87,226              |              | 86,995              |
| FICA  |       |              | 1,156,928           |              | 1,157,952           |
| Retiree Health  |       |              | 1,032,749           |              | 935,329             |
| Health Benefits   |       |              | 2,713,820           |              | 2,927,801           |
| Retirement  |       |              | 3,713,361           |              | 3,787,736           |
| <b>Subtotal</b>   |       |              | <b>\$8,704,084</b>  |              | <b>\$8,895,813</b>  |
| <b>Total Salaries and Benefits</b>                              |       | <b>236.1</b> | <b>\$23,958,316</b> | <b>236.1</b> | <b>\$24,285,211</b> |
| <b>Cost Per FTE Position (Excluding Temporary and Seasonal)</b> |       |              | <b>\$101,480</b>    |              | <b>\$102,869</b>    |
| <b>Statewide Benefit Assessment</b>                             |       |              | <b>\$656,287</b>    |              | <b>\$665,865</b>    |
| <b>Payroll Costs</b>  |       | <b>236.1</b> | <b>\$24,614,603</b> | <b>236.1</b> | <b>\$24,951,076</b> |
| <b>Purchased Services</b>                                       |       |              |                     |              |                     |
| Information Technology  |       |              | 3,904,341           |              | 277,973             |
| Clerical and Temporary Services                                 |       |              | 40,024              |              | 40,027              |
| Legal Services  |       |              | 310,000             |              | 250,000             |
| Other Contracts   |       |              | 160,858             |              | 10,910              |
| Buildings and Ground Maintenance                                |       |              | 55,463              |              | 55,471              |
| Design and Engineering Services                                 |       |              | 28,698              |              | 28,698              |
| Medical Services  |       |              | 33,714              |              | 20,714              |
| <b>Subtotal</b>   |       |              | <b>\$4,533,098</b>  |              | <b>\$683,793</b>    |
| <b>Total Personnel</b>  |       | <b>236.1</b> | <b>\$29,147,701</b> | <b>236.1</b> | <b>\$25,634,869</b> |
| <b>Distribution By Source Of Funds</b>                          |       |              |                     |              |                     |
| General Revenue   |       | 215.0        | \$22,779,056        | 219.6        | \$23,425,968        |
| Federal Funds   |       | 15.1         | \$2,637,408         | 10.5         | \$1,256,660         |
| Restricted Receipts   |       | 6.0          | \$3,731,237         | 6.0          | \$952,241           |
| <b>Total All Funds</b>  |       | <b>236.1</b> | <b>\$29,147,701</b> | <b>236.1</b> | <b>\$25,634,869</b> |

# The Program

---

## Department Of Attorney General Criminal

---

### **Program Mission**

To represent the State with regard to the investigation, prosecution, and trial of all felony matters, misdemeanor cases brought by state law enforcement, and appellate matters within its jurisdiction.

### **Program Description**

The Criminal Program, with offices in Providence, Kent, Washington, and Newport counties, is responsible for the prosecution of felony cases and misdemeanor appeals from the district courts. The Narcotics and Organized Crime Prosecution Unit is composed of legal and support staff. This unit prosecutes all narcotics and organized crime cases. The Forfeiture Unit handles all asset forfeiture cases. The information Charging Unit prepares information for all felony cases filed in Providence County, with the exception of Grand Jury indictments. The Victim/Witness Unit administers a comprehensive assistance program for victims and state witnesses, which is mandated by the Victim's Bill of Rights. The Diversion Unit provides alternatives to court prosecution for selected first-time, non-violent felony offenders. The Juvenile Unit is responsible for prosecuting all juveniles charged with felonies by local police and state agencies, and all adults charged with criminal child abuse. The Appellate Unit represents the State in all criminal appeals before the Rhode Island Supreme Court and post-conviction cases filed in federal court. The Medicaid Fraud Control Unit prosecutes fraud and abuse by providers of Medicaid services to Rhode Island and the Welfare Fraud Unit investigates and prosecutes all cases of welfare fraud.

### **Statutory History**

Article IV, Section 1 of the Rhode Island Constitution and R.I.G.L. 42-9 establish the Office of the Attorney General. R.I.G.L. 12-9 relates to extradition; R.I.G.L. 9-31 relates to governmental tort liability; R.I.G.L. 12-12 relates to indictments and information; R.I.G.L. 12-1 relates to criminal identification; and R.I.G.L. 11-57 relates to weapons.

# The Budget

---

## Department Of Attorney General Criminal

---

|   | 2013<br>Audited     | 2014<br>Audited     | 2015<br>Enacted     | 2015<br>Revised     | 2016<br>Recommend   |
|---|---------------------|---------------------|---------------------|---------------------|---------------------|
| <b>Expenditures By Subprogram</b>       |                     |                     |                     |                     |                     |
| Operations                              | 15,560,352          | 21,284,765          | 26,442,544          | 29,372,820          | 17,106,413          |
| <b>Total Expenditures</b>               | <b>\$15,560,352</b> | <b>\$21,284,765</b> | <b>\$26,442,544</b> | <b>\$29,372,820</b> | <b>\$17,106,413</b> |
| <b>Expenditures By Object</b>           |                     |                     |                     |                     |                     |
| Personnel                               | 14,428,672          | 15,537,099          | 16,189,657          | 19,212,792          | 15,626,156          |
| Operating Supplies and Expenses         | 1,021,914           | 1,394,504           | 2,612,179           | 3,141,673           | 1,337,567           |
| <b>Subtotal: Operating Expenditures</b> | <b>15,450,586</b>   | <b>16,931,603</b>   | <b>18,801,836</b>   | <b>22,354,465</b>   | <b>16,963,723</b>   |
| Capital Purchases and Equipment         | 109,766             | 4,353,162           | 7,640,708           | 7,018,355           | 142,690             |
| <b>Total Expenditures</b>               | <b>\$15,560,352</b> | <b>\$21,284,765</b> | <b>\$26,442,544</b> | <b>\$29,372,820</b> | <b>\$17,106,413</b> |
| <b>Expenditures By Funds</b>            |                     |                     |                     |                     |                     |
| General Revenue                         | 13,886,911          | 14,316,427          | 14,475,192          | 14,863,145          | 15,461,041          |
| Federal Funds                           | 1,307,847           | 1,641,802           | 1,634,631           | 2,679,629           | 1,291,777           |
| Restricted Receipts                     | 365,594             | 5,326,536           | 10,332,721          | 11,830,046          | 353,595             |
| <b>Total Expenditures</b>               | <b>\$15,560,352</b> | <b>\$21,284,765</b> | <b>\$26,442,544</b> | <b>\$29,372,820</b> | <b>\$17,106,413</b> |

# Personnel

## Department Of Attorney General Criminal

|   | Grade  | FY 2015      |                    | FY 2016      |                     |
|---|--------|--------------|--------------------|--------------|---------------------|
|   |        | FTE          | Cost               | FTE          | Cost                |
| <b>Unclassified</b>                     |        |              |                    |              |                     |
| ASSISTANT ATTORNEY GENERAL              | 08745A | 1.0          | 147,718            | 1.0          | 150,672             |
| EXECUTIVE ASSISTANT FOR POLICY AND      | 08743A | 1.0          | 142,989            | 1.0          | 145,849             |
| ASSISTANT ATTORNEY GENERAL              | 08740A | 4.0          | 486,558            | 4.0          | 496,288             |
| ASSISTANT ATTORNEY GENERAL              | 08738A | 7.1          | 729,082            | 7.0          | 750,750             |
| STAFF ATTORNEY V                        | 08736A | 5.0          | 468,239            | 5.0          | 485,774             |
| STAFF ATTORNEY IV                       | 08734A | 5.0          | 469,343            | 5.0          | 478,725             |
| DIRECTOR OF INVESTIGATIONS              | 08735A | 1.0          | 93,807             | 1.0          | 95,684              |
| STAFF ATTORNEY VI                       | 08736A | 1.0          | 92,629             | 1.0          | 94,477              |
| STAFF ATTORNEY III                      | 08732A | 7.0          | 556,983            | 7.0          | 573,874             |
| PRINCIPAL AUDITOR                       | 08728A | 1.0          | 75,363             | 1.0          | 76,870              |
| STAFF ATTORNEY II                       | 08730A | 9.3          | 695,625            | 9.6          | 735,453             |
| STAFF ATTORNEY II                       | 00830A | 1.7          | 123,280            | 1.3          | 104,064             |
| STAFF ATTORNEY I                        | 08728A | 28.9         | 1,896,724          | 30.0         | 2,008,684           |
| SENIOR LEGAL ASSISTANT                  | 08724A | 4.0          | 251,381            | 4.0          | 256,390             |
| SPECIAL PROSECUTOR INVESTIGATOR         | 08724A | 2.0          | 122,897            | 2.0          | 125,353             |
| SENIOR INVESTIGATOR (ATTORNEY GENERAL)  | 08726A | 9.0          | 548,889            | 8.0          | 511,545             |
| ADMINISTRATIVE ASSISTANT                | 08722A | 2.0          | 113,719            | 2.0          | 115,992             |
| CONSUMER INVESTIGATOR                   | 08718A | 0.6          | 32,290             | 0.6          | 32,933              |
| LEGAL ASSISTANT                         | 08720A | 5.0          | 267,944            | 5.0          | 275,737             |
| ASSISTANT CLERK/RESEARCH                | 08718A | 1.0          | 53,568             | 1.0          | 55,357              |
| SENIOR ECONOMIC CRIME INVESTIGATOR (AG) | 08724A | 2.0          | 106,727            | 2.0          | 110,572             |
| CASE INTAKE COORDINATOR                 | 08716A | 3.0          | 140,734            | 3.0          | 143,550             |
| PARALEGAL CLERK                         | 08717A | 19.0         | 888,370            | 19.0         | 911,121             |
| SENIOR LEGAL SECRETARY                  | 08713A | 1.0          | 46,683             | 1.0          | 47,615              |
| CONFIDENTIAL SECRETARY TO ATTORNEY      | 08716A | 1.0          | 46,211             | 1.0          | 47,136              |
| SENIOR ADMINISTRATIVE AIDE              | 08717A | 1.0          | 45,405             | 1.0          | 46,315              |
| FAMILY CRISIS AIDE                      | 08714A | 2.0          | 87,150             | 2.0          | 88,892              |
| ADMINISTRATIVE AIDE                     | 08715A | 1.0          | 42,712             | 1.0          | 43,565              |
| TECHNICAL ASSISTANT                     | 08715A | 1.0          | 42,712             | 1.0          | 43,565              |
| CLASSIFICATION CLERK                    | 08714A | 6.0          | 245,605            | 6.0          | 250,516             |
| INVESTIGATOR/CLERK                      | 08714A | 5.0          | 203,095            | 5.0          | 209,665             |
| CONSUMER SPECIALIST                     | 08714A | 1.0          | 39,614             | 1.0          | 40,406              |
| PRINCIPAL CLERK STENOGRAPHER            | 08711A | 3.0          | 115,240            | 3.0          | 117,544             |
| LEGAL SECRETARY                         | 08712A | 5.0          | 190,756            | 5.0          | 196,523             |
| CHIEF OUT-COUNTIES CLERK (ATTORNEY      | 08711A | 0.6          | 22,670             | 0.6          | 23,123              |
| DATA ENTRY OPERATOR                     | 08712A | 3.0          | 107,722            | 3.0          | 111,859             |
| <b>Subtotal</b>                         |        | <b>151.1</b> | <b>\$9,740,434</b> | <b>151.1</b> | <b>\$10,002,438</b> |



# Personnel

## Department Of Attorney General Criminal

|   | Grade | FY 2015      |                     | FY 2016      |                     |
|---|-------|--------------|---------------------|--------------|---------------------|
|   |       | FTE          | Cost                | FTE          | Cost                |
| Turnover  |       | -            | (327,341)           | -            | (552,705)           |
| <b>Subtotal</b>   |       | -            | <b>(\$327,341)</b>  | -            | <b>(\$552,705)</b>  |
| <b>Total Salaries</b>   |       | <b>151.1</b> | <b>\$9,413,093</b>  | <b>151.1</b> | <b>\$9,449,733</b>  |
| <b>Benefits</b>   |       |              |                     |              |                     |
| Payroll Accrual   |       |              | 54,083              |              | 53,338              |
| FICA  |       |              | 720,694             |              | 714,390             |
| Retiree Health  |       |              | 635,940             |              | 573,904             |
| Health Benefits   |       |              | 1,761,978           |              | 1,955,116           |
| Retirement  |       |              | 2,292,211           |              | 2,325,242           |
| <b>Subtotal</b>   |       |              | <b>\$5,464,906</b>  |              | <b>\$5,621,990</b>  |
| <b>Total Salaries and Benefits</b>                              |       | <b>151.1</b> | <b>\$14,877,999</b> | <b>151.1</b> | <b>\$15,071,723</b> |
| <b>Cost Per FTE Position (Excluding Temporary and Seasonal)</b> |       |              | <b>\$98,471</b>     |              | <b>\$99,760</b>     |
| <b>Statewide Benefit Assessment</b>                             |       |              | <b>\$405,118</b>    |              | <b>\$408,576</b>    |
| <b>Payroll Costs</b>  |       | <b>151.1</b> | <b>\$15,283,117</b> | <b>151.1</b> | <b>\$15,480,299</b> |
| <b>Purchased Services</b>                                       |       |              |                     |              |                     |
| Information Technology  |       |              | 3,649,229           |              | 15,361              |
| Clerical and Temporary Services                                 |       |              | 38,048              |              | 38,048              |
| Other Contracts   |       |              | 160,349             |              | 10,399              |
| Buildings and Ground Maintenance                                |       |              | 35,839              |              | 35,839              |
| Design and Engineering Services                                 |       |              | 25,496              |              | 25,496              |
| Medical Services  |       |              | 20,714              |              | 20,714              |
| <b>Subtotal</b>   |       |              | <b>\$3,929,675</b>  |              | <b>\$145,857</b>    |
| <b>Total Personnel</b>  |       | <b>151.1</b> | <b>\$19,212,792</b> | <b>151.1</b> | <b>\$15,626,156</b> |
| <b>Distribution By Source Of Funds</b>                          |       |              |                     |              |                     |
| General Revenue   |       | 135.0        | \$13,673,392        | 139.6        | \$14,269,058        |
| Federal Funds   |       | 15.1         | \$2,637,408         | 10.5         | \$1,256,660         |
| Restricted Receipts   |       | 1.0          | \$2,901,992         | 1.0          | \$100,438           |
| <b>Total All Funds</b>  |       | <b>151.1</b> | <b>\$19,212,792</b> | <b>151.1</b> | <b>\$15,626,156</b> |

# The Program

---

## Department Of Attorney General Civil

---

### **Program Mission**

To provide cost effective legal representation to the State, its agencies, boards and commissions.

To provide public protection on behalf of the people of Rhode Island as citizens, consumers and taxpayers.

### **Program Description**

The Attorney General of Rhode Island is the State's Chief Legal Officer for both criminal and civil matters and is charged with conducting the State's legal affairs and representing the State in all legal proceedings. By law, the Attorney General represents the State, its agencies and employees in the Rhode Island Supreme Court and all lower state courts; institutes actions in state and federal courts whenever warranted; ensures that representation is provided to state officers, employees, and agencies in all courts; advises state officers and agencies on legal issues and gives written opinions on legal issues when requested by an appropriate governmental officer; and represents the interests of the people.

### **Statutory History**

Article IV, Section 1 of the Rhode Island Constitution and R.I.G.L. 41-9 establish the office of the Attorney General. R.I.G.L. 12-9 relates to extraditions; R.I.G.L. 9-31 relates to governmental tort liability; R.I.G.L. 12-12 relates to indictments and i

# The Budget

---

## Department Of Attorney General Civil

---

|   | <b>2013<br/>Audited</b> | <b>2014<br/>Audited</b> | <b>2015<br/>Enacted</b> | <b>2015<br/>Revised</b> | <b>2016<br/>Recommend</b> |
|---|-------------------------|-------------------------|-------------------------|-------------------------|---------------------------|
| <b>Expenditures By Subprogram</b>       |                         |                         |                         |                         |                           |
| Operations                              | 5,063,030               | 5,485,599               | 5,733,404               | 6,184,174               | 6,182,731                 |
| <b>Total Expenditures</b>               | <b>\$5,063,030</b>      | <b>\$5,485,599</b>      | <b>\$5,733,404</b>      | <b>\$6,184,174</b>      | <b>\$6,182,731</b>        |
| <b>Expenditures By Object</b>           |                         |                         |                         |                         |                           |
| Personnel                               | 4,810,892               | 5,129,616               | 5,344,776               | 5,794,226               | 5,791,475                 |
| Operating Supplies and Expenses         | 251,865                 | 355,983                 | 350,914                 | 352,234                 | 353,225                   |
| <b>Subtotal: Operating Expenditures</b> | <b>5,062,757</b>        | <b>5,485,599</b>        | <b>5,695,690</b>        | <b>6,146,460</b>        | <b>6,144,700</b>          |
| Capital Purchases and Equipment         | 273                     | -                       | 37,714                  | 37,714                  | 38,031                    |
| <b>Total Expenditures</b>               | <b>\$5,063,030</b>      | <b>\$5,485,599</b>      | <b>\$5,733,404</b>      | <b>\$6,184,174</b>      | <b>\$6,182,731</b>        |
| <b>Expenditures By Funds</b>            |                         |                         |                         |                         |                           |
| General Revenue                         | 4,505,211               | 4,911,219               | 4,816,217               | 5,311,305               | 5,285,996                 |
| Restricted Receipts                     | 557,819                 | 574,380                 | 917,187                 | 872,869                 | 896,735                   |
| <b>Total Expenditures</b>               | <b>\$5,063,030</b>      | <b>\$5,485,599</b>      | <b>\$5,733,404</b>      | <b>\$6,184,174</b>      | <b>\$6,182,731</b>        |

# Personnel

## Department Of Attorney General Civil

|   | Grade  | FY 2015     |                    | FY 2016     |                    |
|---|--------|-------------|--------------------|-------------|--------------------|
|   |        | FTE         | Cost               | FTE         | Cost               |
| <b>Unclassified</b>   |        |             |                    |             |                    |
| ASSISTANT ATTORNEY GENERAL                                      | 08745A | 1.0         | 147,718            | 1.0         | 150,672            |
| ASSISTANT ATTORNEY GENERAL                                      | 08740A | 2.0         | 239,334            | 2.0         | 245,121            |
| ASSISTANT ATTORNEY GENERAL                                      | 08738A | 9.0         | 993,346            | 9.0         | 1,011,661          |
| STAFF ATTORNEY V  | 08736A | 1.0         | 93,507             | 1.0         | 98,976             |
| STAFF ATTORNEY IV   | 08734A | 1.0         | 86,457             | 1.0         | 88,186             |
| STAFF ATTORNEY III  | 08732A | 5.0         | 421,106            | 5.0         | 432,690            |
| STAFF ATTORNEY II   | 08730A | 3.0         | 225,616            | 3.0         | 230,127            |
| STAFF ATTORNEY I  | 08728A | 6.0         | 398,548            | 6.0         | 421,908            |
| SENIOR LEGAL ASSISTANT  | 08724A | 2.0         | 122,051            | 2.0         | 124,490            |
| OFFICE MANAGER (AG)   | 08720A | 1.0         | 52,631             | 1.0         | 53,684             |
| ADMINISTRATIVE AIDE   | 08715A | 3.0         | 132,203            | 3.0         | 134,897            |
| SENIOR ADMINISTRATIVE AIDE                                      | 08717A | 1.0         | 43,243             | 1.0         | 44,108             |
| PARALEGAL CLERK   | 08717A | 5.0         | 203,725            | 5.0         | 211,807            |
| ADMINISTRATIVE AIDE   | 08715A | 1.0         | 40,677             | 1.0         | 41,491             |
| SENIOR LEGAL SECRETARY  | 08713A | 2.0         | 81,260             | 2.0         | 82,884             |
| LEGAL SECRETARY   | 08712A | 2.0         | 72,331             | 2.0         | 75,502             |
| <b>Subtotal</b>   |        | <b>45.0</b> | <b>\$3,353,753</b> | <b>45.0</b> | <b>\$3,448,204</b> |
| Turnover  |        | -           | (120,678)          | -           | (168,962)          |
| <b>Subtotal</b>   |        | -           | <b>(\$120,678)</b> | -           | <b>(\$168,962)</b> |
| <b>Total Salaries</b>   |        | <b>45.0</b> | <b>\$3,233,075</b> | <b>45.0</b> | <b>\$3,279,242</b> |
| <b>Benefits</b>   |        |             |                    |             |                    |
| Payroll Accrual   |        |             | 18,354             |             | 18,609             |
| FICA  |        |             | 243,778            |             | 247,242            |
| Retiree Health  |        |             | 218,233            |             | 199,267            |
| Health Benefits   |        |             | 562,973            |             | 570,562            |
| Retirement  |        |             | 786,607            |             | 806,964            |
| <b>Subtotal</b>   |        |             | <b>\$1,829,945</b> |             | <b>\$1,842,644</b> |
| <b>Total Salaries and Benefits</b>                              |        | <b>45.0</b> | <b>\$5,063,020</b> | <b>45.0</b> | <b>\$5,121,886</b> |
| <b>Cost Per FTE Position (Excluding Temporary and Seasonal)</b> |        |             | <b>\$112,512</b>   |             | <b>\$113,820</b>   |
| <b>Statewide Benefit Assessment</b>                             |        |             | <b>\$139,022</b>   |             | <b>\$142,892</b>   |
| <b>Payroll Costs</b>  |        | <b>45.0</b> | <b>\$5,202,042</b> | <b>45.0</b> | <b>\$5,264,778</b> |

# Personnel

## Department Of Attorney General Civil

|  | Grade | FY 2015     |                    | FY 2016     |                    |
|--|-------|-------------|--------------------|-------------|--------------------|
|  |       | FTE         | Cost               | FTE         | Cost               |
| <b>Purchased Services</b>              |       |             |                    |             |                    |
| Information Technology                 |       |             | 252,112            |             | 259,612            |
| Clerical and Temporary Services        |       |             | 1,976              |             | 1,979              |
| Legal Services                         |       |             | 310,000            |             | 250,000            |
| Other Contracts                        |       |             | 343                |             | 345                |
| Buildings and Ground Maintenance       |       |             | 11,979             |             | 11,987             |
| Design and Engineering Services        |       |             | 2,774              |             | 2,774              |
| Medical Services                       |       |             | 13,000             |             | -                  |
| <b>Subtotal</b>                        |       |             | <b>\$592,184</b>   |             | <b>\$526,697</b>   |
| <b>Total Personnel</b>                 |       | <b>45.0</b> | <b>\$5,794,226</b> | <b>45.0</b> | <b>\$5,791,475</b> |
| <b>Distribution By Source Of Funds</b> |       |             |                    |             |                    |
| General Revenue                        |       | 40.0        | \$4,964,981        | 40.0        | \$4,939,672        |
| Restricted Receipts                    |       | 5.0         | \$829,245          | 5.0         | \$851,803          |
| <b>Total All Funds</b>                 |       | <b>45.0</b> | <b>\$5,794,226</b> | <b>45.0</b> | <b>\$5,791,475</b> |

# The Program

---

Department Of Attorney General  
Bureau of Criminal Identification

---

## **Program Mission**

To provide criminal history information and descriptive data on demand to federal and local law enforcement agencies, 24-hours a day, seven days a week.

## **Program Description**

The Bureau of Criminal Identification (BCI) is a repository and central clearinghouse for information on individuals who have been arrested or convicted of crimes in Rhode Island. This information includes criminal history records, fingerprints, and warrant information. The unit operates 24 hours a day, seven days a week. This unit also receives and processes requests for records from law enforcement agencies across the country. Additionally, BCI issues and maintains pistol permits, issues security guard licenses, and conducts background checks.

## **Statutory History**

Section 12-1-4 of the Rhode Island General Laws establishes the Bureau of Criminal Identification within the Office of the Attorney General. The duties of this unit are further outlined in Sections 12-1-5 through 12-1-12.

# The Budget

---

## Department Of Attorney General Bureau of Criminal Identification

---

|   | 2013<br>Audited    | 2014<br>Audited    | 2015<br>Enacted    | 2015<br>Revised    | 2016<br>Recommend  |
|---|--------------------|--------------------|--------------------|--------------------|--------------------|
| <b>Expenditures By Subprogram</b>       |                    |                    |                    |                    |                    |
| Operations                              | 1,385,594          | 1,382,120          | 1,542,124          | 1,575,883          | 1,591,162          |
| <b>Total Expenditures</b>               | <b>\$1,385,594</b> | <b>\$1,382,120</b> | <b>\$1,542,124</b> | <b>\$1,575,883</b> | <b>\$1,591,162</b> |
| <b>Expenditures By Object</b>           |                    |                    |                    |                    |                    |
| Personnel                               | 1,312,572          | 1,320,385          | 1,476,634          | 1,511,587          | 1,526,866          |
| Operating Supplies and Expenses         | 47,954             | 61,735             | 57,970             | 56,776             | 56,776             |
| <b>Subtotal: Operating Expenditures</b> | <b>1,360,526</b>   | <b>1,382,120</b>   | <b>1,534,604</b>   | <b>1,568,363</b>   | <b>1,583,642</b>   |
| Capital Purchases and Equipment         | 25,068             | -                  | 7,520              | 7,520              | 7,520              |
| <b>Total Expenditures</b>               | <b>\$1,385,594</b> | <b>\$1,382,120</b> | <b>\$1,542,124</b> | <b>\$1,575,883</b> | <b>\$1,591,162</b> |
| <b>Expenditures By Funds</b>            |                    |                    |                    |                    |                    |
| General Revenue                         | 1,303,236          | 1,374,942          | 1,542,124          | 1,575,883          | 1,591,162          |
| Federal Funds                           | 82,358             | 7,178              | -                  | -                  | -                  |
| <b>Total Expenditures</b>               | <b>\$1,385,594</b> | <b>\$1,382,120</b> | <b>\$1,542,124</b> | <b>\$1,575,883</b> | <b>\$1,591,162</b> |

# Personnel

## Department Of Attorney General Bureau of Criminal Identification

|   | Grade  | FY 2015     |                    | FY 2016     |                    |
|---|--------|-------------|--------------------|-------------|--------------------|
|   |        | FTE         | Cost               | FTE         | Cost               |
| <b>Unclassified</b>   |        |             |                    |             |                    |
| CHIEF OF THE OFFICE OF INVESTIGATIONS                           | 08736A | 1.0         | 92,624             | 1.0         | 94,476             |
| DATA PROCESSING SYSTEMS MANAGER                                 | 08736A | 1.0         | 88,214             | 1.0         | 89,978             |
| ADMINISTRATIVE ASSISTANT  | 08722A | 2.0         | 109,083            | 2.0         | 112,700            |
| AFIS OPERATOR/FINGERPRINT EXPERT                                | 08724A | 1.0         | 49,050             | 1.0         | 51,818             |
| LEGAL ASSISTANT   | 08720A | 4.0         | 191,335            | 4.0         | 197,547            |
| SENIOR ADMINISTRATIVE AIDE                                      | 08717A | 1.0         | 45,405             | 1.0         | 46,314             |
| CLASSIFICATION CLERK  | 08714A | 2.0         | 86,507             | 2.0         | 88,210             |
| DATA ENTRY OPERATOR   | 08712A | 1.0         | 39,672             | 1.0         | 40,466             |
| LEGAL SECRETARY   | 08712A | 2.0         | 76,084             | 2.0         | 77,324             |
| PRINCIPAL CLERK STENOGRAPHER                                    | 08711A | 4.0         | 147,827            | 4.0         | 153,014            |
| <b>Subtotal</b>   |        | <b>19.0</b> | <b>\$925,801</b>   | <b>19.0</b> | <b>\$951,847</b>   |
| Turnover  |        | -           | (5,545)            | -           | (13,116)           |
| <b>Subtotal</b>   |        | <b>-</b>    | <b>(\$5,545)</b>   | <b>-</b>    | <b>(\$13,116)</b>  |
| <b>Total Salaries</b>   |        | <b>19.0</b> | <b>\$920,256</b>   | <b>19.0</b> | <b>\$938,731</b>   |
| <b>Benefits</b>   |        |             |                    |             |                    |
| Payroll Accrual   |        |             | 5,227              |             | 5,342              |
| FICA  |        |             | 70,036             |             | 71,442             |
| Retiree Health  |        |             | 62,117             |             | 56,324             |
| Health Benefits   |        |             | 187,586            |             | 180,462            |
| Retirement  |        |             | 223,899            |             | 231,305            |
| <b>Subtotal</b>   |        |             | <b>\$548,865</b>   |             | <b>\$544,875</b>   |
| <b>Total Salaries and Benefits</b>                              |        | <b>19.0</b> | <b>\$1,469,121</b> | <b>19.0</b> | <b>\$1,483,606</b> |
| <b>Cost Per FTE Position (Excluding Temporary and Seasonal)</b> |        |             | <b>\$77,322</b>    |             | <b>\$78,085</b>    |
| <b>Statewide Benefit Assessment</b>                             |        |             | <b>\$39,571</b>    |             | <b>\$40,365</b>    |
| <b>Payroll Costs</b>  |        | <b>19.0</b> | <b>\$1,508,692</b> | <b>19.0</b> | <b>\$1,523,971</b> |
| <b>Purchased Services</b>                                       |        |             |                    |             |                    |
| Other Contracts   |        |             | 81                 |             | 81                 |
| Buildings and Ground Maintenance                                |        |             | 2,814              |             | 2,814              |
| <b>Subtotal</b>   |        |             | <b>\$2,895</b>     |             | <b>\$2,895</b>     |
| <b>Total Personnel</b>  |        | <b>19.0</b> | <b>\$1,511,587</b> | <b>19.0</b> | <b>\$1,526,866</b> |
| <b>Distribution By Source Of Funds</b>                          |        |             |                    |             |                    |
| General Revenue   |        | 19.0        | \$1,511,587        | 19.0        | \$1,526,866        |
| <b>Total All Funds</b>  |        | <b>19.0</b> | <b>\$1,511,587</b> | <b>19.0</b> | <b>\$1,526,866</b> |



# The Program

---

## Department Of Attorney General General

---

### **Program Mission**

To provide the infrastructure necessary for the efficient operation of the Office of the Attorney General.

### **Program Description**

The General program provides administrative support to ensure that the department operates efficiently and consists of six units:

The Executive Unit consists of the Attorney General, the Deputy Attorney General, and support staff. The function of this unit is to coordinate the efforts of all parts of the department.

The Fiscal Unit is responsible for all financial operations of the department including the preparation of the budget, monitoring and controlling expenditures, and processing all financial paperwork.

The Personnel Unit processes all paperwork regarding hiring, transfers, promotions, and terminations and monitors payroll records submitted to Accounts and Control. This unit must ensure that all state and federal laws and regulations are upheld, including equal employment opportunities and affirmative action requirements.

The Operations Unit is responsible for purchasing, maintenance, and repair of the department's buildings and automobiles and monitoring the department's telephone and mail systems.

The Management Information System Unit administers and operates the department's computer systems. The system consists of five central processing units, multiple application servers, over 220 desktop computers, and 30 printers. The Attorney General's computer system is linked to the court's computer system and the Rhode Island Law Enforcement Telecommunications System.

The Public Information/Legislation Unit handles all communication with the media, submits legislation on the Attorney General's behalf, and coordinates the Attorney General's education and community outreach efforts.

### **Statutory History**

Article IV, Section 1 of the Rhode Island Constitution and R.I.G.L. 42-9 establish the Office of the Attorney General. R.I.G.L. 12-9 relates to extraditions; R.I.G.L. 9-31 relates to governmental tort liability; R.I.G.L. 12-12 relates to indictments; R.I.G.L. 12-1 relates to criminal identification; and R.I.G.L. 11-57 relates to weapons.

# The Budget

---

## Department Of Attorney General General

---

|   | <b>2013<br/>Audited</b> | <b>2014<br/>Audited</b> | <b>2015<br/>Enacted</b> | <b>2015<br/>Revised</b> | <b>2016<br/>Recommend</b> |
|---|-------------------------|-------------------------|-------------------------|-------------------------|---------------------------|
| <b>Expenditures By Subprogram</b>       |                         |                         |                         |                         |                           |
| Operations                              | 3,014,791               | 2,857,513               | 3,073,613               | 3,043,735               | 3,155,011                 |
| <b>Total Expenditures</b>               | <b>\$3,014,791</b>      | <b>\$2,857,513</b>      | <b>\$3,073,613</b>      | <b>\$3,043,735</b>      | <b>\$3,155,011</b>        |
| <b>Expenditures By Object</b>           |                         |                         |                         |                         |                           |
| Personnel                               | 2,402,628               | 2,470,866               | 2,559,173               | 2,629,096               | 2,690,372                 |
| Operating Supplies and Expenses         | 203,845                 | 162,076                 | 205,048                 | 155,247                 | 155,247                   |
| <b>Subtotal: Operating Expenditures</b> | <b>2,606,473</b>        | <b>2,632,942</b>        | <b>2,764,221</b>        | <b>2,784,343</b>        | <b>2,845,619</b>          |
| Capital Purchases and Equipment         | 408,318                 | 224,571                 | 309,392                 | 259,392                 | 309,392                   |
| <b>Total Expenditures</b>               | <b>\$3,014,791</b>      | <b>\$2,857,513</b>      | <b>\$3,073,613</b>      | <b>\$3,043,735</b>      | <b>\$3,155,011</b>        |
| <b>Expenditures By Funds</b>            |                         |                         |                         |                         |                           |
| General Revenue                         | 2,606,596               | 2,632,942               | 2,773,613               | 2,793,735               | 2,855,011                 |
| Operating Transfers from Other Funds    | 408,195                 | 224,571                 | 300,000                 | 250,000                 | 300,000                   |
| <b>Total Expenditures</b>               | <b>\$3,014,791</b>      | <b>\$2,857,513</b>      | <b>\$3,073,613</b>      | <b>\$3,043,735</b>      | <b>\$3,155,011</b>        |

# Personnel

## Department Of Attorney General General

|   | Grade  | FY 2015     |                    | FY 2016     |                    |
|---|--------|-------------|--------------------|-------------|--------------------|
|   |        | FTE         | Cost               | FTE         | Cost               |
| <b>Unclassified</b>   |        |             |                    |             |                    |
| DEPUTY ATTORNEY GENERAL (ATTORNEY                               | 08750A | 1.0         | 178,259            | 1.0         | 181,823            |
| CHIEF OF STAFF (ATTORNEY GENERAL)                               | 08747A | 1.0         | 137,759            | 1.0         | 140,514            |
| DIRECTOR OF ADMINISTRATION (ATTORNEY                            | 08741A | 1.0         | 129,076            | 1.0         | 131,656            |
| PUBLIC INFORMATION OFFICER (ATTORNEY                            | 08745A | 1.0         | 128,451            | 1.0         | 131,019            |
| ATTORNEY GENERAL  | 00535F | 1.0         | 120,301            | 1.0         | 120,301            |
| DIRECTOR OF POLICY AND PUBLIC AFFAIRS                           | 08738A | 1.0         | 114,012            | 1.0         | 116,266            |
| PUBLIC INFORMATION OFFICER                                      | 08735A | 1.0         | 98,072             | 1.0         | 100,033            |
| EXECUTIVE ASSISTANT FOR ADMINISTRATION                          | 08738A | 1.0         | 95,903             | 1.0         | 97,887             |
| PROJECT MANAGER   | 08730A | 1.0         | 81,476             | 1.0         | 83,106             |
| ASSOCIATE EXECUTIVE ASSISTANT                                   | 08726A | 1.0         | 66,705             | 1.0         | 67,977             |
| SENIOR INVESTIGATOR (ATTORNEY GENERAL)                          | 08726A | 1.0         | 66,662             | 1.0         | 67,998             |
| SENIOR LEGAL ASSISTANT  | 08724A | 1.0         | 64,242             | 1.0         | 65,526             |
| AFIS OPERATOR/FINGERPRINT EXPERT                                | 08724A | 1.0         | 63,764             | 1.0         | 65,526             |
| EXECUTIVE ASSISTANT   | 08725A | 1.0         | 57,783             | 1.0         | 59,393             |
| PRINCIPAL ADMINISTRATIVE CLERK                                  | 08725A | 1.0         | 53,400             | 1.0         | 56,394             |
| INVESTIGATOR  | 08722A | 1.0         | 50,482             | 1.0         | 52,723             |
| EXECUTIVE ASSISTANT (ATTORNEY GENERAL)                          | 08721A | 1.0         | 48,660             | 1.0         | 50,794             |
| SYSTEMS ANALYST   | 08718A | 1.0         | 42,290             | 1.0         | 44,465             |
| LEGAL SECRETARY   | 08712A | 3.0         | 112,368            | 3.0         | 115,617            |
| <b>Subtotal</b>   |        | <b>21.0</b> | <b>\$1,709,665</b> | <b>21.0</b> | <b>\$1,749,018</b> |
| Turnover  |        | -           | (21,857)           | -           | (27,326)           |
| <b>Subtotal</b>   |        | -           | <b>(\$21,857)</b>  | -           | <b>(\$27,326)</b>  |
| <b>Total Salaries</b>   |        | <b>21.0</b> | <b>\$1,687,808</b> | <b>21.0</b> | <b>\$1,721,692</b> |
| <b>Benefits</b>   |        |             |                    |             |                    |
| Payroll Accrual   |        |             | 9,562              |             | 9,706              |
| FICA  |        |             | 122,420            |             | 124,878            |
| Retiree Health  |        |             | 116,459            |             | 105,834            |
| Health Benefits   |        |             | 201,283            |             | 221,661            |
| Retirement  |        |             | 410,644            |             | 424,225            |
| <b>Subtotal</b>   |        |             | <b>\$860,368</b>   |             | <b>\$886,304</b>   |
| <b>Total Salaries and Benefits</b>                              |        | <b>21.0</b> | <b>\$2,548,176</b> | <b>21.0</b> | <b>\$2,607,996</b> |
| <b>Cost Per FTE Position (Excluding Temporary and Seasonal)</b> |        |             | <b>\$121,342</b>   |             | <b>\$124,190</b>   |
| <b>Statewide Benefit Assessment</b>                             |        |             | <b>\$72,576</b>    |             | <b>\$74,032</b>    |
| <b>Payroll Costs</b>  |        | <b>21.0</b> | <b>\$2,620,752</b> | <b>21.0</b> | <b>\$2,682,028</b> |

# Personnel

---

## Department Of Attorney General General

---

|  | Grade | FY 2015     |                    | FY 2016     |                    |
|--|-------|-------------|--------------------|-------------|--------------------|
|  |       | FTE         | Cost               | FTE         | Cost               |
| <b>Purchased Services</b>              |       |             |                    |             |                    |
| Information Technology                 |       |             | 3,000              |             | 3,000              |
| Other Contracts                        |       |             | 85                 |             | 85                 |
| Buildings and Ground Maintenance       |       |             | 4,831              |             | 4,831              |
| Design and Engineering Services        |       |             | 428                |             | 428                |
| <b>Subtotal</b>                        |       |             | <b>\$8,344</b>     |             | <b>\$8,344</b>     |
| <b>Total Personnel</b>                 |       | <b>21.0</b> | <b>\$2,629,096</b> | <b>21.0</b> | <b>\$2,690,372</b> |
| <b>Distribution By Source Of Funds</b> |       |             |                    |             |                    |
| General Revenue                        |       | 21.0        | \$2,629,096        | 21.0        | \$2,690,372        |
| <b>Total All Funds</b>                 |       | <b>21.0</b> | <b>\$2,629,096</b> | <b>21.0</b> | <b>\$2,690,372</b> |