

State of Rhode Island and Providence Plantations

Budget



Fiscal Year 2016

Volume IV – Public Safety, Natural Resources and Transportation

Gina M. Raimondo, Governor

Agency

Department Of Environmental Management

Agency Mission

The mission of the Department of Environmental Management is to protect, restore, and manage the State's natural resources while maintaining its citizens' health and safety and to motivate citizens to practice an environmental ethic based upon an understanding of their environment, their own dependence on it, and the ways in which their actions affect it.

Agency Description

To ensure residents have equal access to environmental benefits and to prevent any segment of the State's population from bearing a disproportionate share of environmental risks and pollution.

To ensure all residents and visitors will have the opportunity to enjoy a diverse mix of well-maintained, scenic, and accessible facilities and outdoor recreation opportunities.

To ensure natural habitats are managed to maintain species biodiversity.

To ensure air, water, and land resources are restored and maintained to protect public health and ecological integrity.

To educate residents and corporate entities to practice an environmental ethic based upon an understanding of their environment, and how their interactions affect it, including prevent pollution and minimize waste at the source.

To practice careful stewardship of Rhode Island's finite water, air, land, agriculture, forest resources, and to ensure that Rhode Island's rich aquatic resources are maintained for the future.

To take necessary actions to preserve and enhance resources of the Narragansett Bay and coastal environments.

To revitalize, protect, and restore urban areas for reuse while conserving ecologically sensitive urban areas.

To promote economic opportunity that preserves the State's resources and maintains Rhode Island's high quality of life for a sound economy.

One of the top cross-cutting priorities is improving customer service. This includes training for all staff in 2012 and development of improved systems and feedback. A critical component of this effort is the Department's LEAN government initiative which is aimed at reducing waste, standardizing processes, and producing clear, predictable, and reliable regulations.

Statutory History

R.I.G.L. 42-17.1 establishes the Department of Environmental Management.

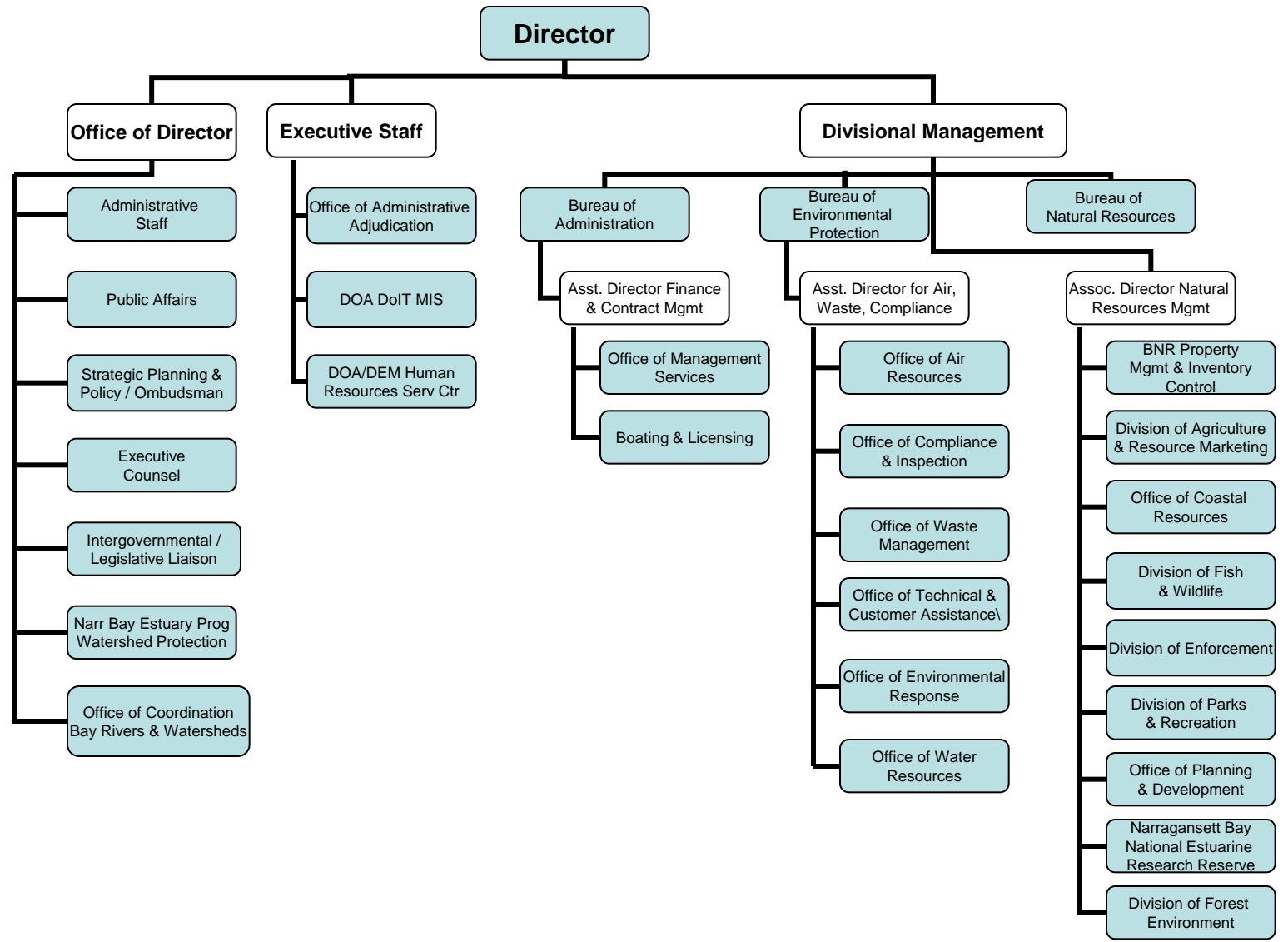
Budget

Department Of Environmental Management

	FY 2013 Audited	FY 2014 Audited	FY 2015 Enacted	FY 2015 Revised	FY 2016 Recommend
Expenditures By Program					
Office of Director	7,429,276	7,400,561	8,087,939	8,737,953	7,963,281
Bureau of Natural Resources	33,640,820	44,381,299	65,042,601	67,522,802	54,683,994
Bureau of Environmental Protection	26,502,690	27,687,854	30,680,987	31,052,679	30,835,528
Total Expenditures	\$67,572,786	\$79,469,714	\$103,811,527	\$107,313,434	\$93,482,803
Expenditures By Object					
Personnel	50,454,924	50,809,946	54,736,891	56,410,703	55,472,760
Operating Supplies and Expenses	8,876,671	11,001,191	11,592,660	12,373,745	12,379,692
Assistance and Grants	4,244,972	4,817,930	6,555,017	10,428,041	6,501,661
Aid to Local Units of Government	-	1,106	-	-	-
Subtotal: Operating Expenditures	63,576,567	66,630,173	72,884,568	79,212,489	74,354,113
Capital Purchases and Equipment	3,996,219	12,839,541	30,876,959	28,050,945	19,078,690
Operating Transfers	-	-	50,000	50,000	50,000
Total Expenditures	\$67,572,786	\$79,469,714	\$103,811,527	\$107,313,434	\$93,482,803
Expenditures By Funds					
General Revenue	34,140,929	34,534,163	35,540,105	36,105,322	36,505,567
Federal Funds	18,300,658	22,231,819	31,859,611	34,034,773	29,307,477
Restricted Receipts	12,009,000	13,377,916	15,934,989	16,478,862	18,454,537
Operating Transfers from Other Funds	3,122,199	9,325,816	20,476,822	20,694,477	9,215,222
Total Expenditures	\$67,572,786	\$79,469,714	\$103,811,527	\$107,313,434	\$93,482,803
FTE Authorization	399.0	399.0	399.0	399.0	399.0

The Agency

Department of Environmental Management



Personnel

Department Of Environmental Management Agency Summary

	Grade	FY 2015		FY 2016	
		FTE	Cost	FTE	Cost
Classified		397.0	26,984,444	396.0	27,486,479
Unclassified		6.0	683,588	5.0	582,213
Subtotal		403.0	\$27,668,032	401.0	\$28,068,692
Cost Allocation from Other Programs		8.5	638,438	10.5	835,109
Cost Allocation to Other Programs		(8.5)	(\$638,438)	(10.5)	(\$835,109)
Interdepartmental Transfer		-	-	-	(\$364,127)
Overtime		-	745,477	-	744,603
Reconcile to FTE Authorization		(4.0)	-	(2.0)	-
Temporary and Seasonal		-	2,674,096	-	3,025,863
Turnover		-	(\$557,943)	-	(\$339,278)
Subtotal		(4.0)	\$2,861,630	(2.0)	\$3,067,061
Total Salaries		399.0	\$30,529,662	399.0	\$31,135,753
Benefits					
Payroll Accrual			152,153		152,208
Holiday			360,801		354,093
Other			-		28,278
FICA			2,275,889		2,305,489
Retiree Health			1,865,819		1,694,863
Health Benefits			4,842,275		5,163,995
Retirement			6,604,237		6,686,858
Subtotal			\$16,101,174		\$16,385,784
Total Salaries and Benefits		399.0	\$46,630,836	399.0	\$47,521,537
Cost Per FTE Position (Excluding Temporary and Seasonal)			\$110,167		\$111,518
Statewide Benefit Assessment			\$1,275,383		\$1,330,265
Payroll Costs		399.0	\$47,906,219	399.0	\$48,851,802

Personnel

Department Of Environmental Management Agency Summary

	Grade	FY 2015		FY 2016	
		FTE	Cost	FTE	Cost
Purchased Services					
Information Technology			369,262		486,522
University and College Services			1,024,121		959,456
Clerical and Temporary Services			122,995		122,995
Management & Consultant Services			900,000		-
Legal Services			50,000		50,000
Other Contracts			49,969		50,469
Buildings and Ground Maintenance			45,200		45,200
Training and Educational Services			123,374		113,374
Design and Engineering Services			5,786,463		4,759,842
Medical Services			33,100		33,100
Subtotal			\$8,504,484		\$6,620,958
Total Personnel		399.0	\$56,410,703	399.0	\$55,472,760
Distribution By Source Of Funds					
General Revenue		314.5	\$28,556,156	314.5	\$29,192,443
Federal Funds		58.0	\$17,743,037	58.0	\$16,186,834
Restricted Receipts		26.5	\$9,764,775	26.5	\$9,746,748
Operating Transfers from Other Funds		-	\$346,735	-	\$346,735
Total All Funds		399.0	\$56,410,703	399.0	\$55,472,760

The Program

Department Of Environmental Management Office of Director

Program Mission

The Office of the Director develops and implements the agency's wide range of programs to protect Rhode Island's environment; protect the citizens of the state from public health threats resulting from pollution; and provide facilities that support a diversity of outdoor recreational activities.

Program Description

The Office of the Director consists of Management Services, Legal Services, Administrative Adjudication, Human Resources, and Information Technology. The Office also coordinates the Department's Planning & Policy Initiatives, Legislative & Intergovernmental Affairs, and Communications and Outreach and houses the Office of the Chair, RI Bays, Rivers, and Watersheds Coordination Team.

The Office of Management Services is responsible for managing the financial, budget, licensing and business support services for the department. This involves maintaining approximately 200 separate accounts for the department's programs, as well as the issuance of 22,339 boat registrations and all hunting and fishing licenses.

The Office of Legal Services counsels and represents the department and its divisions and provides legal guidance on the development and administration of regulatory programs. It also provides legal assistance to a number of municipalities, particularly in the area of land use relating to the preservation of open space.

The Office of Administrative Adjudication is the administrative tribunal for environmental matters originating from the Department. It adjudicates appeals of enforcement actions taken by the Department's regulatory programs and hears enforcement appeals for alleged violations of statutes and/or regulations. The Office is responsible for ensuring that the regulated community has an opportunity to contest actions taken by the Department and have such actions reviewed at the agency level.

The Human Resource Service Center staff provides direct administrative support to the Department Director, Senior Management, and the agency's workforce, which currently comprises of approximately 410 full time employees and 510 seasonal positions. Functions include payroll, personnel administration, labor relations, equal employment opportunity, minority recruitment/internship program, and training.

The Information Technology Service Center staff provides oversight, coordination, and development of standardize investments in software, hardware, networks and services. Staff provide the Department with effective and efficient application of information technology and delivers secure, innovative, and reliable technology solutions in the most responsive and effective manner.

The Office of the Chair of the Bays, Rivers, and Watersheds Coordination Team conducts and oversees interagency planning and targeted investments for the protection, restoration, and sustainable development of Rhode Island's fresh and marine waters and watersheds. The Chair reports to the Governor.

Statutory History

R.I.G.L. 42-17.1 establishes the Department of Environmental Management.

The Budget

Department Of Environmental Management Office of Director

	2013 Audited	2014 Audited	2015 Enacted	2015 Revised	2016 Recommend
Expenditures By Subprogram					
Administration	3,148,321	3,340,459	3,634,675	3,820,265	3,346,937
Environmental Coordination	797,020	435,748	626,108	1,052,081	606,703
Management Services	2,432,984	2,571,625	2,726,616	2,776,697	2,855,487
Legal Services	524,807	548,886	552,883	557,555	611,395
Administrative Adjudication	523,354	503,488	514,243	531,355	542,759
Permit Streamlining	2,790	355	33,414	-	-
Total Expenditures	\$7,429,276	\$7,400,561	\$8,087,939	\$8,737,953	\$7,963,281
Expenditures By Object					
Personnel	4,036,215	4,282,677	4,522,577	4,853,908	4,874,563
Operating Supplies and Expenses	2,713,367	2,634,921	2,748,241	2,770,167	2,771,840
Assistance and Grants	662,100	137,094	805,071	1,098,628	301,628
Subtotal: Operating Expenditures	7,411,682	7,054,692	8,075,889	8,722,703	7,948,031
Capital Purchases and Equipment	17,594	345,869	12,050	15,250	15,250
Total Expenditures	\$7,429,276	\$7,400,561	\$8,087,939	\$8,737,953	\$7,963,281
Expenditures By Funds					
General Revenue	4,652,829	4,463,163	5,053,567	5,079,070	4,712,770
Federal Funds	355,997	355,011	150,000	150,000	150,000
Restricted Receipts	2,420,450	2,582,387	2,884,372	3,508,883	3,100,511
Total Expenditures	\$7,429,276	\$7,400,561	\$8,087,939	\$8,737,953	\$7,963,281

Personnel

Department Of Environmental Management Office of Director

	Grade	FY 2015		FY 2016	
		FTE	Cost	FTE	Cost
Classified					
ASSISTANT DIRECTOR FINANCIAL AND CONTRACT	00141A	1.0	124,191	1.0	126,599
DEPUTY CHIEF OF LEGAL SERVICES	00137A	1.0	103,472	1.0	105,472
ADMINISTRATOR, FINANCIAL MANAGEMENT	00137A	1.0	101,049	1.0	103,049
ASSISTANT TO THE DIRECTOR (DEM)	00136A	3.0	272,147	3.0	280,246
SENIOR LEGAL COUNSEL	00134A	4.0	321,172	4.0	327,432
PROGRAMMING SERVICES OFFICER	00031A	1.0	80,119	1.0	81,721
PROGRAMMER/ANALYST I (UNIX/SQL)	00328A	1.0	72,283	1.0	73,722
FISCAL MANAGEMENT OFFICER	00B26A	1.0	64,821	1.0	66,117
SENIOR MANAGEMENT AND METHODS ANALYST	00325A	1.0	62,532	1.0	65,350
ADMINISTRATIVE OFFICER	00324A	1.0	62,126	1.0	63,336
PRINCIPAL ACCOUNTANT	00326A	1.0	60,999	1.0	62,219
RESEARCH TECHNICIAN	00319A	1.0	50,810	1.0	51,826
ASSISTANT ADMINISTRATIVE OFFICER	00121A	1.0	46,871	1.0	48,594
CHIEF CLERK	00B16A	1.0	46,211	1.0	47,135
SENIOR ACCOUNTANT	00323A	1.0	45,638	1.0	47,951
ADMINISTRATIVE OFFICER	00124A	1.0	45,532	1.0	46,443
LICENSING AIDE	00315A	3.0	136,398	3.0	139,126
CLERK SECRETARY	00116A ²	1.0	39,519	-	-
FISCAL CLERK	00314A	3.0	111,214	3.0	113,262
Subtotal		28.0	\$1,847,104	27.0	\$1,849,600
Unclassified					
HEARING OFFICER	00914F	1.0	131,528	1.0	134,159
CHIEF HEARING OFFICER	00711F	1.0	130,166	1.0	132,769
EXECUTIVE COUNSEL	00839A	1.0	121,002	1.0	123,365
CHAIR COORD TEAM BAYS, RIVERS &	00839A ¹	1.0	110,609	-	-
DIRECTOR DEPARTMENT OF ENVIRONMENTAL	00948KF	1.0	108,460	1.0	108,460
ADMINISTRATIVE ASSISTANT	00829A	1.0	81,823	1.0	83,460
Subtotal		6.0	\$683,588	5.0	\$582,213
Cost Allocation from Other Programs		5.5	448,790	7.5	643,713
Cost Allocation to Other Programs		(2.0)	(140,000)	(2.0)	(140,000)
Temporary and Seasonal		-	25,000	-	25,000
Turnover		-	(20,773)	-	(21,463)
Subtotal		3.5	\$313,017	5.5	\$507,250
Total Salaries		37.5	\$2,843,709	37.5	\$2,939,063
Benefits					
Payroll Accrual			15,287		15,710
FICA			209,757		219,789
Retiree Health			186,893		173,534
Health Benefits			396,644		442,146
Retirement			693,030		724,079
Subtotal			\$1,501,611		\$1,575,258

Personnel

Department Of Environmental Management Office of Director

	Grade	FY 2015		FY 2016	
		FTE	Cost	FTE	Cost
Total Salaries and Benefits		37.5	\$4,345,320	37.5	\$4,514,321
Cost Per FTE Position (Excluding Temporary and Seasonal)			\$115,209		\$119,715
Statewide Benefit Assessment			\$117,888		\$123,042
Payroll Costs		37.5	\$4,463,208	37.5	\$4,637,363
Purchased Services					
Information Technology			150,000		150,000
Clerical and Temporary Services			1,400		1,400
Other Contracts			8,300		8,800
Design and Engineering Services			231,000		77,000
Subtotal			\$390,700		\$237,200
Total Personnel		37.5	\$4,853,908	37.5	\$4,874,563
Distribution By Source Of Funds					
General Revenue		26.0	\$1,845,465	26.0	\$1,977,492
Federal Funds		-	\$150,000	-	\$150,000
Restricted Receipts		11.5	\$2,858,443	11.5	\$2,747,071
Total All Funds		37.5	\$4,853,908	37.5	\$4,874,563

1 Coordination Team is eliminated in FY 2016.

2 Coordination Team is eliminated in FY 2016.

The Program

Department Of Environmental Management Bureau of Natural Resources

Program Mission

The objectives of this bureau are to provide stewardship of the State's finite water, air, land, agricultural, forest resources, and the conservation of the State's aquatic resources and to provide people with well-maintained, scenic, and accessible outdoor recreational opportunities. The Bureau's work to increase enjoyment and use of public lands is augmented by the Department's successful Great Outdoors Pursuit. This program attracts thousands of Rhode Islanders who participate in activities that introduce them to our outstanding natural resources.

Program Description

The Bureau of Natural Resources is organized into six divisions:

The Division of Fish and Wildlife manages the State's marine and freshwater, and upland resources to achieve a sustained yield for commercial fishermen, recreational fishermen and hunters; to enhance non-consumptive uses of wildlife; and to protect the State's rare and endangered species. The division maintains state-owned management areas, fishing areas, and boat ramps.

The Division of Agriculture and Resource Marketing manages the State's agriculture programs, including farm viability and protection; licensing and permitting; farm-best management practices; animal health, mosquito and rabies disease control; and pesticide management and regulation.

The Division of Enforcement enforces state laws and regulations governing hunting and fishing, public safety in state parks, and recreational boating. The division maintains a 24-hour hotline and dispatch center, conducts search and rescue activities on both land and the bay, and responds to animal complaints, particularly those associated with rabies. The division oversees the Criminal Investigation Unit, which investigates solid, medical, and hazardous waste violations.

The Division of Parks and Recreation manages eight major state parks, seven state beaches, a golf course, the East Bay and Blackstone Bike Paths, and other secondary parks, historic sites and monuments totaling approximately 14,000 acres. The division administers, maintains and operates these facilities as well as coordinating recreational opportunities and activities at the Narragansett Bay Estuarine Research Reserve and all port facilities and commercial fishing piers in Narragansett and Newport.

The Division of Forest Environment manages 40,000 acres of state-owned forests. It coordinates forest fire protection plans, the Urban Forestry Grant Program, and it assists rural volunteer fire departments.

The Division of Planning and Development is responsible for state land acquisitions, engineering/design work for improvements to state parks and facilities, and local matching grant programs for outdoor recreation, open space preservation and greenways/trails grants.

Statutory History

R.I.G.L. 42-17.1 establishes the Department of Environmental Management.

The Budget

Department Of Environmental Management Bureau of Natural Resources

	2013 Audited	2014 Audited	2015 Enacted	2015 Revised	2016 Recommend
Expenditures By Subprogram					
Fish,Wildlife & Estuarine Res	9,096,281	10,838,057	18,939,009	17,155,330	16,923,364
Agriculture	2,335,377	2,670,650	2,779,508	2,774,553	5,011,117
Enforcement	5,619,829	6,091,283	6,207,767	6,449,065	6,471,502
Natural Resources Admin	3,205,139	5,989,236	9,450,944	12,106,309	7,290,990
Parks and Recreation	11,366,140	13,724,574	23,218,248	22,845,434	16,198,453
Forest Environment	1,638,277	1,748,588	2,125,525	2,192,111	2,251,068
Coastal Resources	379,777	3,318,911	2,321,600	4,000,000	537,500
Total Expenditures	\$33,640,820	\$44,381,299	\$65,042,601	\$67,522,802	\$54,683,994
Expenditures By Object					
Personnel	22,898,185	23,690,687	25,461,100	26,935,782	26,135,958
Operating Supplies and Expenses	5,463,930	6,543,439	7,316,776	7,575,022	7,618,713
Assistance and Grants	1,330,586	2,536,270	2,284,496	5,675,753	2,545,333
Aid to Local Units of Government	-	1,106	-	-	-
Subtotal: Operating Expenditures	29,692,701	32,771,502	35,062,372	40,186,557	36,300,004
Capital Purchases and Equipment	3,948,119	11,609,797	29,930,229	27,286,245	18,333,990
Operating Transfers	-	-	50,000	50,000	50,000
Total Expenditures	\$33,640,820	\$44,381,299	\$65,042,601	\$67,522,802	\$54,683,994
Expenditures By Funds					
General Revenue	18,783,609	18,960,675	19,244,615	19,498,632	20,040,905
Federal Funds	9,609,862	13,357,324	21,348,128	23,363,711	19,131,833
Restricted Receipts	2,893,751	2,946,252	4,138,036	4,130,716	6,460,768
Operating Transfers from Other Funds	2,353,598	9,117,048	20,311,822	20,529,743	9,050,488
Total Expenditures	\$33,640,820	\$44,381,299	\$65,042,601	\$67,522,802	\$54,683,994

Personnel

Department Of Environmental Management Bureau of Natural Resources

	Grade	FY 2015		FY 2016	
		FTE	Cost	FTE	Cost
Classified					
ASSOCIATE DIRECTOR FOR NATURAL RESOURCES	00143A	1.0	131,784	1.0	134,414
ASSISTANT DIRECTOR FOR NATURAL RESOURCES	00140A	1.0	115,486	1.0	117,782
CHIEF DIVISION OF PARKS AND RECREATION	00138A	1.0	110,975	1.0	113,087
CHIEF DIVISION OF AGRICULTURE & RESOURCE	00138A	1.0	107,636	1.0	109,748
ADMINISTRATOR OF SUSTAINABLE WATERSHED	00138A	1.0	107,052	1.0	109,163
CHIEF DIVISION OF ENFORCEMENT (DEM)	00138A	1.0	105,937	1.0	107,961
ASSISTANT TO THE DIRECTOR (DEM)	00136A	1.0	96,411	1.0	98,300
SUPERVISING CIVIL ENGINEER (NATURAL	00035A	1.0	93,766	1.0	95,592
DEPUTY CHIEF DIVISION OF PARKS AND	00134A	1.0	92,730	1.0	94,563
DEPUTY CHIEF FOR MARINE FISHERIES	00134A	1.0	91,638	1.0	93,471
SUPERINTENDENT OF STATE PARKS (DEM)	00134A	1.0	91,638	1.0	93,471
DEPUTY CHIEF DIVISION OF PLANNING AND	00134A	1.0	90,497	1.0	92,254
ENVIRONMENTAL POLICE OFFICER IV (DEM)	00133A	2.0	180,868	2.0	184,360
SUPERVISING ENVIRONMENTAL SCIENTIST	00034A	3.0	267,231	3.0	272,475
DEPUTY CHIEF FOR FRESHWATER FISHERIES	00132A	1.0	88,345	1.0	90,041
PRINCIPAL CIVIL ENGINEER (DESIGN)	00333A	2.0	176,628	2.0	180,065
CHIEF DIVISION OF PLANNING AND	00138A	1.0	86,735	1.0	88,470
PUBLIC HEALTH VETERINARIAN	00336A	2.0	173,181	2.0	176,644
DEPUTY CHIEF DIVISION OF FOREST	00132A	1.0	85,703	1.0	87,399
CHIEF DIVISION OF FISH AND WILDLIFE (DEM)	00138A	1.0	85,034	1.0	85,034
DEPUTY CHIEF DIVISION OF AGRICULTURE & RES	00132A	1.0	82,557	1.0	84,183
PROGRAMMING SERVICES OFFICER	00031A	1.0	82,437	1.0	84,073
SUPERVISING GEOGRAPHIC INFORMATION	00032A	1.0	81,002	1.0	82,561
DEPUTY CHIEF FOR WILDLIFE	00132A	1.0	80,308	1.0	81,863
ENVIRONMENTAL POLICE OFFICER III (DEM)	00330A	3.0	238,879	3.0	243,467
FEDERAL AID PROGRAM COORDINATOR (DEM)	00132A	1.0	79,565	1.0	82,019
CHIEF DISTRIBUTION OFFICER	00331A	1.0	78,468	1.0	80,013
SUPERVISING BIOLOGIST (MARINE FISHERIES)	00030A	2.0	152,723	1.0	78,919
SENIOR ENVIRONMENTAL SCIENTIST	00330A	2.0	152,697	2.0	155,670
PRINCIPAL PLANNER	00329A	1.0	75,278	1.0	76,742
ENVIRONMENTAL CRIMINAL INVESTIGATOR II	00329A	1.0	74,936	1.0	76,502
SUPERVISING FORESTER	00029A	2.0	149,860	2.0	155,026
RESEARCH VESSEL CAPTAIN (DEM)	00329A	1.0	74,742	1.0	76,237
ENVIRONMENTAL CRIMINAL INVESTIGATOR III	00132A	1.0	74,211	1.0	75,695
REGIONAL PARK MANAGER (DIVISION OF PARKS &	00329A	5.0	364,382	5.0	372,141
ENVIRONMENTAL POLICE OFFICER II (DEM)	00328A	3.0	218,242	3.0	222,468
ADMINISTRATIVE COURT OFFICER (DEM)	00328A	2.0	144,618	2.0	147,436
STATE PORTS MANAGER	00132A	1.0	70,677	1.0	72,091
SUPERVISING BIOLOGIST (FRESHWATER	00030A	1.0	69,912	1.0	74,330
CHIEF OF CONSTRUCTION OPERATIONS	00327A	1.0	69,640	1.0	70,996
PRINCIPAL BIOLOGIST (WILDLIFE)	00327A	4.0	278,453	4.0	283,964
ENGINEERING TECHNICIAN IV (NATURAL	00327A	1.0	69,235	1.0	70,620
SENIOR ENVIRONMENTAL PLANNER	00327A	2.0	138,102	2.0	140,843
PRINCIPAL BIOLOGIST (FRESH WATER FISHERIES)	00327A	3.0	203,281	3.0	207,291
STATE HUNTER SAFETY EDUCATION	00326A	1.0	67,118	1.0	68,449

Personnel

Department Of Environmental Management Bureau of Natural Resources

	Grade	FY 2015		FY 2016	
		FTE	Cost	FTE	Cost
FISCAL MANAGEMENT OFFICER	00B26A	2.0	133,791	2.0	138,890
PRINCIPAL BIOLOGIST (MARINE FISHERIES)	00327A	9.0	567,760	9.0	580,865
ENVIRONMENTAL POLICE OFFICER I (DEM)	00326A	20.0	1,260,421	20.0	1,285,449
ASSISTANT REGIONAL PARK MANAGER (DIV. OF	00325A	8.0	484,792	8.0	504,132
AGRICULTURAL MARKETING SPECIALIST (DEM)	00324A	1.0	60,518	1.0	61,702
SENIOR PLANT PATHOLOGIST	00323A	3.0	172,989	3.0	176,421
ENVIRONMENTAL SCIENTIST	00326A	1.0	57,090	1.0	59,390
VETERINARY PARAMEDIC	00322A	1.0	56,732	1.0	57,857
SUPERVISING BIOLOGIST (WILDLIFE)	00330A	1.0	56,605	1.0	57,737
SUPERINTENDENT OF STATE PIERS	00324A	1.0	53,256	1.0	54,321
DISTRICT RESOURCES MANAGER	00021A	1.0	52,966	1.0	54,025
PARK RANGER PROGRAM COORDINATOR	00320A	1.0	52,421	1.0	53,469
DISTRICT RESOURCES MANAGER	00321A	2.0	104,766	2.0	108,481
ACCOUNTANT	00320A	2.0	101,527	2.0	102,250
SENIOR COMPUTER OPERATOR	00318A	1.0	50,240	1.0	51,214
TECHNICAL STAFF ASSISTANT (DEM)	00320A	1.0	49,910	1.0	50,891
PRINCIPAL FORESTER	00326A	2.0	99,189	2.0	104,336
CLERK SECRETARY	00B16A	1.0	49,362	1.0	50,349
SUPERINTENDENT OF PROPERTY CONTROL AND	00323A	1.0	49,067	1.0	51,982
RESEARCH VESSEL FIRST MATE (ASSOCIATE	00324A	1.0	48,547	1.0	51,467
ELECTRICIAN SUPERVISOR	00320G	1.0	48,539	1.0	49,510
PARK MANAGER (DIVISION OF PARKS AND	00320A	8.0	387,021	8.0	397,331
IMPLEMENTATION AIDE	00122A	2.0	95,915	2.0	98,997
MARINE MAINTENANCE SUPERVISOR	00317G	1.0	47,661	1.0	48,614
ADMINISTRATIVE OFFICER	00124A	1.0	46,925	1.0	49,366
HEAVY MOTOR EQUIPMENT MECHANIC/OPERATOR	00318A	1.0	46,211	1.0	47,135
SENIOR BIOLOGIST (WILDLIFE)	00325A	1.0	45,642	1.0	46,555
CARPENTER	00314G	2.0	89,979	2.0	91,764
GOLF COURSE MAINTENANCE SUPERVISOR (DEM)	00320A	1.0	44,614	1.0	45,506
ASSISTANT DISTRICT RESOURCES MANAGER	00316A	3.0	133,695	3.0	136,370
ASSISTANT ADMINISTRATIVE OFFICER	00321A	1.0	44,471	1.0	46,473
SENIOR FOREST RANGER	00318A	3.0	132,893	3.0	135,551
PROPERTY CONTROL AND SUPPLY OFFICER	00317A	1.0	42,711	1.0	43,565
SENIOR WORD PROCESSING TYPIST	00312A	2.0	84,999	2.0	86,682
INFORMATION AIDE	00315A	1.0	41,549	1.0	42,380
HEAVY MOTOR EQUIPMENT OPERATOR	00314G	3.0	121,309	3.0	123,736
PRINCIPAL FOREST RANGER	00321A	1.0	40,365	1.0	41,172
COMMUNICATION SYSTEM OPERATOR (DEM)	00316A	6.0	241,018	6.0	248,017
PARK CARETAKER-SUPERVISOR	00314G	1.0	39,887	1.0	40,684
CLERK	00307A	1.0	39,508	1.0	40,298
LABORER	00308G	2.0	78,856	2.0	80,432
SENIOR MAINTENANCE TECHNICIAN	00314G	6.0	235,922	6.0	241,913
FISH HATCHERY SUPERVISOR	00313G	3.0	115,926	3.0	118,245
SENIOR RECONCILIATION CLERK	00314A	2.0	76,368	2.0	78,708
SEMI-SKILLED LABORER	00310G	5.0	187,353	5.0	191,509
PIER SUPERVISOR (MAINTENANCE)	00313G	1.0	36,730	1.0	37,929

Personnel

Department Of Environmental Management Bureau of Natural Resources

	Grade	FY 2015		FY 2016	
		FTE	Cost	FTE	Cost
CHIEF OF MARINE RESOURCES MANAGEMENT	00138A	-	-	1.0	78,002
Subtotal		188.0	\$11,658,614	188.0	\$11,929,565
Cost Allocation to Other Programs		(2.0)	(149,649)	(2.0)	(151,397)
Interdepartmental Transfer		-	-	-	(364,127)
Overtime		-	695,477	-	694,603
Temporary and Seasonal		-	2,649,096	-	3,000,863
Turnover		-	(199,930)	-	(135,515)
Subtotal		(2.0)	\$2,994,994	(2.0)	\$3,044,427
Total Salaries		186.0	\$14,653,608	186.0	\$14,973,992
Benefits					
Payroll Accrual			62,915		61,845
Holiday			358,301		351,593
Other			-		28,278
FICA			1,068,392		1,079,607
Retiree Health			788,352		683,909
Health Benefits			2,380,287		2,465,838
Retirement			2,740,686		2,745,445
Subtotal			\$7,398,933		\$7,416,515
Total Salaries and Benefits		186.0	\$22,052,541	186.0	\$22,390,507
Cost Per FTE Position (Excluding Temporary and Seasonal)			\$104,320		\$104,245
Statewide Benefit Assessment			\$597,644		\$637,853
Payroll Costs		186.0	\$22,650,185	186.0	\$23,028,360

Personnel

Department Of Environmental Management Bureau of Natural Resources

	Grade	FY 2015		FY 2016	
		FTE	Cost	FTE	Cost
Purchased Services					
Information Technology			31,762		31,762
University and College Services			994,121		929,456
Clerical and Temporary Services			114,545		114,545
Management & Consultant Services			900,000		-
Other Contracts			39,319		39,319
Buildings and Ground Maintenance			45,200		45,200
Training and Educational Services			109,374		109,374
Design and Engineering Services			2,018,176		1,804,842
Medical Services			33,100		33,100
Subtotal			\$4,285,597		\$3,107,598
Total Personnel		186.0	\$26,935,782	186.0	\$26,135,958
Distribution By Source Of Funds					
General Revenue		179.0	\$15,339,042	179.0	\$15,624,315
Federal Funds		7.0	\$9,754,207	7.0	\$8,624,058
Restricted Receipts		-	\$1,654,964	-	\$1,700,016
Operating Transfers from Other Funds		-	\$187,569	-	\$187,569
Total All Funds		186.0	\$26,935,782	186.0	\$26,135,958

The Program

Department Of Environmental Management Bureau of Environmental Protection

Program Mission

To ensure the quality of Rhode Island's air, water, and land resources through regulating activities that compromise public health and impact the environment; prevent further degradation of environmental resources; restore existing features and a bureau-wide ethic of customer assistance.

Program Description

The Bureau of Environmental Protection is composed of regulatory and assistance programs.

The Office of Water Resources operates the following regulatory programs: Pollutant Discharge Elimination System; Pretreatment; Underground Injection Control; Groundwater Protection; Water Quality Certification; Onsite Wastewater Treatment Systems; Freshwater Wetlands; Water Quality Restoration Studies (TMDLS); Shellfish Area Monitoring; Wastewater Treatment Facility and Sludge Programs, Nonpoint Source; Water Quality Monitoring and Standards; Financial Assistance (SRF/Bond Funds).

The Office of Compliance and Inspection centralizes response to citizen complaints and regulatory enforcement activities in Air Resources, Waste Management, and Water Resources, to ensure that the department has consistent enforcement policies to address the most serious issues and investigates suspected violations and takes enforcement actions.

The Office for Customer and Technical Assistance serves the public by coordinating the review of projects requiring multiple applications and permits and tracking the status of permitting activities throughout the bureau. OCTA directly reviews projects funded by federal economic stimulus programs. The office assists businesses to prevent pollution by adhering to regulations made more effective by the Environmental Results Program in priority sectors.

The Office of Air Resources is responsible for the protection and improvement of Rhode Island's air resources through monitoring and regulating the emission of air pollutants from stationary and mobile sources.

The Office of Waste Management regulates the transportation and disposal of solid, medical and hazardous wastes and the investigation and remediation of unpermitted releases of those materials. It includes the Site Remediation Program; Brownfield initiatives; Superfund and Department of Defense site programs; Waste Facility Management Program; and Underground Storage Tank Program, including administration of the RI Underground Storage Tank Financial Responsibility Fund.

The Emergency Response Program responds to emergency spills of oil and chemicals that present an immediate threat to public health and the environment, including events related to terrorism and natural disasters.

Statutory History

R.I.G.L. 42-17.1 establishes the Department of Environmental Management.

The Budget

Department Of Environmental Management Bureau of Environmental Protection

	2013 Audited	2014 Audited	2015 Enacted	2015 Revised	2016 Recommend
Expenditures By Subprogram					
Water Resources	7,712,480	7,911,149	9,424,386	9,705,193	9,330,806
Environmental Protection Admin	214,644	360,187	442,134	453,948	460,579
Compliance & Inspection	3,683,592	4,610,319	5,071,291	4,986,255	5,100,966
Technical & Customer Assist	1,552,990	1,310,420	1,299,134	1,368,081	1,414,517
RIPDES	1,115,932	1,203,956	1,210,750	1,357,962	1,325,472
Air Resources	4,479,637	4,340,656	4,312,486	4,263,472	4,458,624
Waste Management	4,186,814	4,160,873	4,417,566	4,528,646	4,363,140
Environmental Response	3,556,601	3,790,294	4,503,240	4,389,122	4,381,424
Total Expenditures	\$26,502,690	\$27,687,854	\$30,680,987	\$31,052,679	\$30,835,528
Expenditures By Object					
Personnel	23,520,524	22,836,582	24,753,214	24,621,013	24,462,239
Operating Supplies and Expenses	699,374	1,822,831	1,527,643	2,028,556	1,989,139
Assistance and Grants	2,252,286	2,144,566	3,465,450	3,653,660	3,654,700
Subtotal: Operating Expenditures	26,472,184	26,803,979	29,746,307	30,303,229	30,106,078
Capital Purchases and Equipment	30,506	883,875	934,680	749,450	729,450
Total Expenditures	\$26,502,690	\$27,687,854	\$30,680,987	\$31,052,679	\$30,835,528
Expenditures By Funds					
General Revenue	10,704,491	11,110,325	11,241,923	11,527,620	11,751,892
Federal Funds	8,334,799	8,519,484	10,361,483	10,521,062	10,025,644
Restricted Receipts	6,694,799	7,849,277	8,912,581	8,839,263	8,893,258
Operating Transfers from Other Funds	768,601	208,768	165,000	164,734	164,734
Total Expenditures	\$26,502,690	\$27,687,854	\$30,680,987	\$31,052,679	\$30,835,528

Personnel

Department Of Environmental Management Bureau of Environmental Protection

	Grade	FY 2015		FY 2016	
		FTE	Cost	FTE	Cost
Classified					
ASSOCIATE DIRECTOR FOR ENVIRONMENTAL	00143A	1.0	129,678	1.0	132,253
ASSISTANT DIRECTOR OF WATER RESOURCES	00140A	1.0	115,527	1.0	117,823
CHIEF OF COMPLIANCE & INSPECTION (DEM)	00138A	1.0	108,130	1.0	110,242
CHIEF OF TECHNICAL & CUSTOMER ASSISTANCE	00138A	1.0	107,446	1.0	109,514
CHIEF DIVISION OF AIR RESOURCES (DEM)	00138A	1.0	106,904	1.0	109,016
CHIEF OF SURFACE WATER PROTECTION (DEM)	00138A	1.0	106,179	1.0	108,247
CHIEF OF GROUNDWATER AND WETLAND	00138A	1.0	105,646	1.0	108,127
CHIEF OF WASTE MANAGEMENT (DEM)	00138A	1.0	103,059	1.0	105,083
ENVIRONMENTAL RESPONSE COORDINATOR	00138A	1.0	102,865	1.0	104,859
DEPUTY CHIEF OF WATER QUALITY AND	00136A	2.0	198,683	2.0	202,585
DEPUTY CHIEF OF WASTE MANAGEMENT (DEM)	00136A	1.0	96,411	1.0	98,300
SUPERVISING SANITARY ENGINEER (DEM)	00135A	1.0	91,985	1.0	93,825
ASSOCIATE SUPERVISING SANITARY ENGR	00034A	3.0	274,672	3.0	280,069
SUPERVISING AIR QUALITY SPECIALIST	00034A	4.0	362,097	4.0	369,254
SUPERVISING ENVIRONMENTAL SCIENTIST	00034A	8.0	718,035	8.0	662,919
PRINCIPAL ENVIRONMENTAL SCIENTIST	00032A	2.0	173,396	2.0	176,761
PRINCIPAL SANITARY ENGINEER	00333A	12.0	1,028,897	12.0	1,049,050
PRINCIPAL ENVIRONMENTAL SCIENTIST	00332A	9.0	756,197	9.0	770,964
PRINCIPAL AIR QUALITY SPECIALIST	00332A	3.0	251,287	3.0	256,233
PRINCIPAL CIVIL ENGINEER (NATURAL	00333A	4.0	333,355	4.0	339,904
SUPERVISING SANITARY ENGINEER (DEM)	00035A	2.0	166,192	2.0	169,465
STATE METEOROLOGIST/ATMOSPHERIC SCIENTIST	00332A	1.0	81,952	1.0	83,554
PROGRAMMING SERVICES OFFICER	00031A	1.0	78,414	1.0	79,983
SENIOR SANITARY ENGINEER	00331A	13.0	983,563	13.0	1,005,340
SENIOR ENVIRONMENTAL SCIENTIST	00330A	33.0	2,468,710	33.0	2,526,293
SENIOR AIR QUALITY SPECIALIST	00330A	9.0	669,329	9.0	682,286
SUPERVISING ENVIRONMENTAL PLANNER	00031A	2.0	148,585	2.0	151,517
PROGRAMMING SERVICES OFFICER	00131A	2.0	146,393	2.0	149,253
OIL AND HAZARDOUS MATERIALS SPECIALIST 2	00329A	4.0	291,678	4.0	297,378
CHIEF IMPLEMENTATION AIDE	00028A	1.0	71,765	1.0	73,189
SENIOR ENVIRONMENTAL PLANNER	00327A	2.0	134,663	2.0	137,260
PRINCIPAL INFORMATION AND PUBLIC RELATIONS	00326A	1.0	66,888	1.0	68,219
OFFICE MANAGER	00K23A	1.0	64,931	1.0	66,192
ENVIRONMENTAL SCIENTIST	00326A	8.0	508,488	8.0	521,399
CIVIL ENGINEER	00327A	1.0	63,466	1.0	64,735
ADMINISTRATIVE OFFICER	00324A	2.0	123,522	2.0	125,943
JUNIOR SANITARY ENGINEER	00326A	3.0	182,669	3.0	186,273
ENGINEERING TECHNICIAN III (NATURAL	00323A	2.0	121,552	2.0	123,939
OFFICE MANAGER	00123A	1.0	60,288	1.0	61,481
SANITARY ENGINEER	00327A	12.0	715,569	12.0	738,357
SUPERVISING ENVIRONMENTAL QUALITY	00323A	1.0	54,697	1.0	55,791
AIR QUALITY SPECIALIST	00326A	6.0	325,996	6.0	338,888
TECHNICAL STAFF ASSISTANT (DEM)	00320A	3.0	156,109	3.0	159,208
ENVIRONMENTAL QUALITY TECHNICIAN	00319A	1.0	51,891	1.0	52,929
TECHNICAL STAFF ASSISTANT	00320A	1.0	46,041	1.0	46,962

Personnel

Department Of Environmental Management Bureau of Environmental Protection

	Grade	FY 2015		FY 2016	
		FTE	Cost	FTE	Cost
ELECTRONIC COMPUTER OPERATOR	00315A	1.0	45,466	1.0	46,375
SENIOR NATURAL RESOURCE SPECIALIST	00323A	1.0	44,927	1.0	47,093
DATA CONTROL CLERK	00315A	3.0	131,609	3.0	134,202
CLERK SECRETARY	00K16A	2.0	84,819	2.0	86,515
INFORMATION SERVICES TECHNICIAN I	00316A	1.0	40,203	1.0	42,066
SENIOR CLERK-TYPIST	00309A	1.0	39,955	1.0	40,754
INFORMATION AIDE	00315A	1.0	37,947	1.0	39,447
Subtotal		181.0	\$13,478,726	181.0	\$13,707,314
Cost Allocation from Other Programs		3.0	189,648	3.0	191,396
Cost Allocation to Other Programs		(4.5)	(348,789)	(6.5)	(543,712)
Overtime		-	50,000	-	50,000
Turnover		-	(337,240)	-	(182,300)
Subtotal		(1.5)	(\$446,381)	(3.5)	(\$484,616)
Total Salaries		179.5	\$13,032,345	177.5	\$13,222,698
Benefits					
Payroll Accrual			73,951		74,653
Holiday			2,500		2,500
FICA			997,740		1,006,093
Retiree Health			890,574		837,420
Health Benefits			2,065,344		2,256,011
Retirement			3,170,521		3,217,334
Subtotal			\$7,200,630		\$7,394,011
Total Salaries and Benefits		179.5	\$20,232,975	177.5	\$20,616,709
Cost Per FTE Position (Excluding Temporary and Seasonal)			\$112,719		\$116,150
Statewide Benefit Assessment			\$559,851		\$569,370
Payroll Costs		179.5	\$20,792,826	177.5	\$21,186,079

Personnel

Department Of Environmental Management Bureau of Environmental Protection

	Grade	FY 2015		FY 2016	
		FTE	Cost	FTE	Cost
Purchased Services					
Information Technology			187,500		304,760
University and College Services			30,000		30,000
Clerical and Temporary Services			7,050		7,050
Legal Services			50,000		50,000
Other Contracts			2,350		2,350
Training and Educational Services			14,000		4,000
Design and Engineering Services			3,537,287		2,878,000
Subtotal			\$3,828,187		\$3,276,160
Total Personnel		179.5	\$24,621,013	177.5	\$24,462,239
Distribution By Source Of Funds					
General Revenue		113.5	\$11,371,649	111.5	\$11,590,636
Federal Funds		51.0	\$7,838,830	51.0	\$7,412,776
Restricted Receipts		15.0	\$5,251,368	15.0	\$5,299,661
Operating Transfers from Other Funds		-	\$159,166	-	\$159,166
Total All Funds		179.5	\$24,621,013	177.5	\$24,462,239