

State of Rhode Island and Providence Plantations

Budget



Fiscal Year 2017

Volume I – General Government and Quasi-Public Agencies

Gina M. Raimondo, Governor

Agency

General Assembly - Constitution

Agency Mission

The General Assembly meets annually and is responsible for enactment of laws, formation of state policy and evaluation of programs through the appropriation process.

Agency Description

The Rhode Island Legislature, the General Assembly, consists of two chambers. The Senate is composed of 38 members. The House of Representatives is composed of 75 members. The Office of the Speaker of the House, President of the Senate Staff, the Joint Committee on Legislative Affairs, the Legislative Council, the Fiscal Advisory Staff, the Office of the Auditor General, the Legislative Press Bureau, State Government Internship Office, the Law Revision Office, the Research and Proofing Offices, and the Special Legislative Commissions assist the General Assembly in executing its constitutional role.

Statutory History

The Legislature is one of the three branches of government authorized in the Rhode Island Constitution. Article VI establishes the powers of the Legislature, and Articles VII and VIII define the composition of the House of Representatives and the Senate.

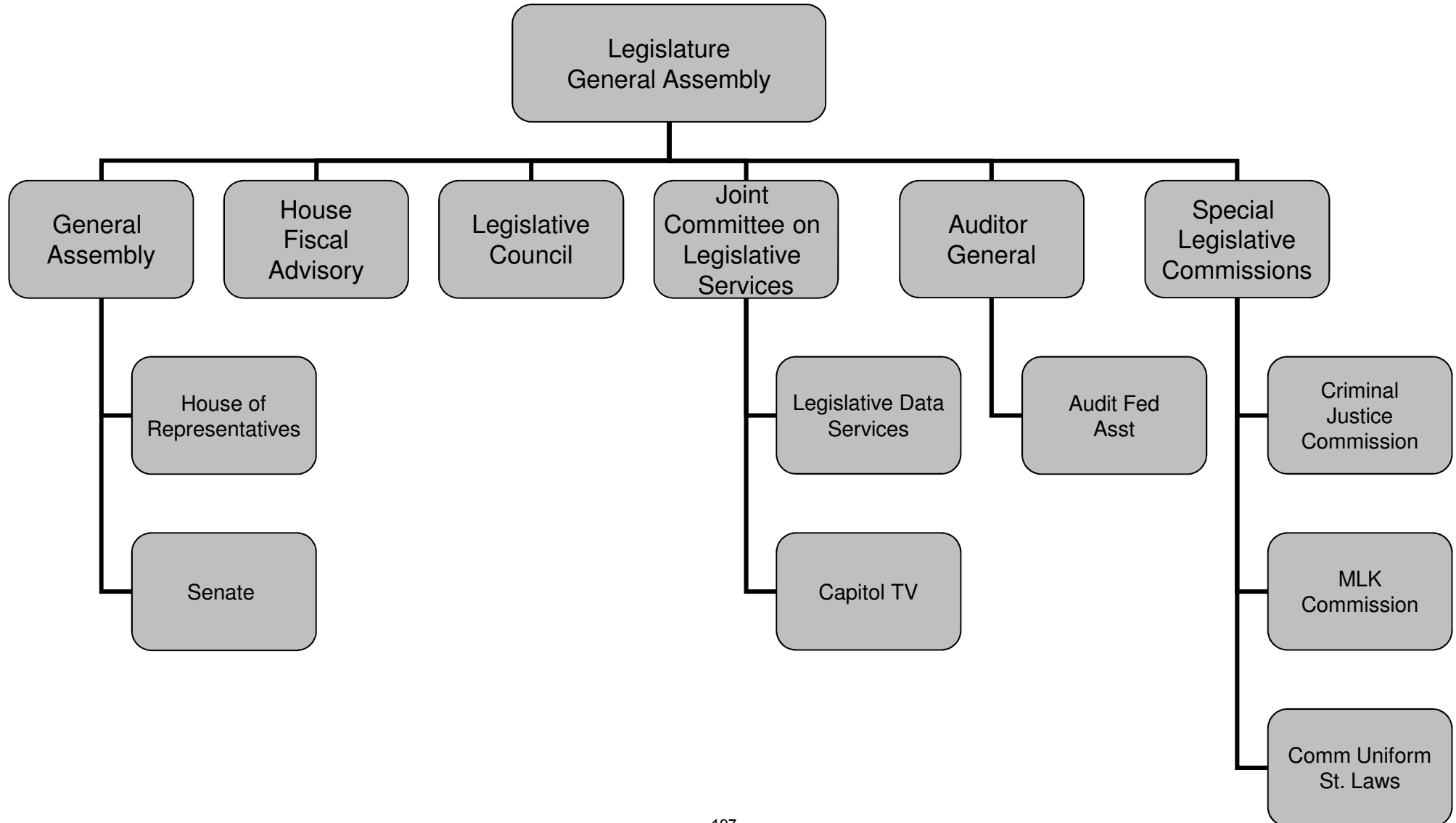
Budget

General Assembly - Constitution

	FY 2014 Audited	FY 2015 Audited	FY 2016 Enacted	FY 2016 Revised	FY 2017 Recommend
Expenditures By Program					
General Assembly	4,830,111	5,100,489	5,526,121	6,727,584	5,725,048
Fiscal Advisory Staff	1,573,288	1,464,798	1,846,092	1,899,935	1,893,563
Legislative Council	3,789,825	3,692,521	5,018,501	4,916,064	5,357,247
Joint Comm. on Legislative Services	20,824,899	21,485,556	23,170,750	25,171,175	24,414,329
Auditor General	4,656,039	4,439,628	5,579,580	5,377,177	5,645,215
Special Legislative Commissions	7,536	7,430	13,900	13,900	13,900
Total Expenditures	\$35,681,698	\$36,190,422	\$41,154,944	\$44,105,835	\$43,049,302
Expenditures By Object					
Personnel	31,213,965	31,199,869	35,714,847	34,630,838	36,919,042
Operating Supplies and Expenses	2,151,997	2,589,008	2,876,597	5,813,497	3,092,760
Assistance and Grants	2,158,670	2,165,230	2,300,000	2,300,000	2,300,000
Subtotal: Operating Expenditures	35,524,632	35,954,107	40,891,444	42,744,335	42,311,802
Capital Purchases and Equipment	157,066	236,315	263,500	1,361,500	737,500
Total Expenditures	\$35,681,698	\$36,190,422	\$41,154,944	\$44,105,835	\$43,049,302
Expenditures By Funds					
General Revenue	34,498,448	34,865,422	39,474,071	42,490,012	41,352,730
Restricted Receipts	1,183,250	1,325,000	1,680,873	1,615,823	1,696,572
Total Expenditures	\$35,681,698	\$36,190,422	\$41,154,944	\$44,105,835	\$43,049,302
FTE Authorization	298.5	298.5	298.5	298.5	298.5

The Agency

Legislature General Assembly



Personnel

General Assembly - Constitution Agency Summary

	Grade	FY 2016		FY 2017	
		FTE	Cost	FTE	Cost
Unclassified		298.5	21,476,844	298.5	21,713,977
Subtotal		298.5	\$21,476,844	298.5	\$21,713,977
Merit Increases - Auditor General		-	20,000	-	30,000
Temporary and Seasonal		-	321,627	-	289,550
Turnover		-	(\$1,047,375)	-	-
Subtotal		-	(\$705,748)	-	\$319,550
Total Salaries		298.5	\$20,771,096	298.5	\$22,033,527
Benefits					
Payroll Accrual			116,082		124,694
FICA			1,566,419		1,658,705
Retiree Health			1,143,675		1,216,805
Health Benefits			4,866,947		5,087,674
Retirement			4,600,648		5,236,958
Subtotal			\$12,293,771		\$13,324,836
Total Salaries and Benefits		298.5	\$33,064,867	298.5	\$35,358,363
Cost Per FTE Position (Excluding Temporary and Seasonal)			\$109,693		\$117,483
Statewide Benefit Assessment			\$940,621		\$1,031,179
Payroll Costs		298.5	\$34,005,488	298.5	\$36,389,542
Purchased Services					
Information Technology			130,000		210,000
Clerical and Temporary Services			67,000		55,000
Management & Consultant Services			134,500		48,500
Legal Services			280,000		210,000
Other Contracts			2,850		2,500
Buildings and Ground Maintenance			11,000		3,500
Subtotal			\$625,350		\$529,500
Total Personnel		298.5	\$34,630,838	298.5	\$36,919,042
Distribution By Source Of Funds					
General Revenue		298.5	\$33,181,388	298.5	\$35,353,465
Restricted Receipts		-	\$1,449,450	-	\$1,565,577
Total All Funds		298.5	\$34,630,838	298.5	\$36,919,042

The Program

General Assembly - Constitution General Assembly

Program Mission

The General Assembly meets annually and is responsible for the enactment of laws, the formation of basic state policy, and the evaluation of existing programs through the appropriation process.

Program Description

The General Assembly consists of two chambers. The Senate is composed of 38 members. The House of Representatives is composed of 75 members.

Statutory History

The legislative power of the State is vested in the Legislature as set forth in Article VI of the State Constitution, and the composition of the General Assembly is established in Articles VII and VIII of the State Constitution.

The Budget

General Assembly - Constitution General Assembly

	2014 Audited	2015 Audited	2016 Enacted	2016 Revised	2017 Recommend
Expenditures By Subprogram					
Operations	4,830,111	5,100,489	5,526,121	6,727,584	5,725,048
Total Expenditures	\$4,830,111	\$5,100,489	\$5,526,121	\$6,727,584	\$5,725,048
Expenditures By Object					
Personnel	3,642,000	3,558,652	4,030,571	3,863,034	3,901,198
Operating Supplies and Expenses	1,101,024	1,462,901	1,435,050	2,560,550	1,658,350
Subtotal: Operating Expenditures	4,743,024	5,021,553	5,465,621	6,423,584	5,559,548
Capital Purchases and Equipment	87,087	78,936	60,500	304,000	165,500
Total Expenditures	\$4,830,111	\$5,100,489	\$5,526,121	\$6,727,584	\$5,725,048
Expenditures By Funds					
General Revenue	4,830,111	5,100,489	5,526,121	6,727,584	5,725,048
Total Expenditures	\$4,830,111	\$5,100,489	\$5,526,121	\$6,727,584	\$5,725,048

Personnel

General Assembly - Constitution

General Assembly

	Grade	FY 2016		FY 2017	
		FTE	Cost	FTE	Cost
Unclassified					
REPRESENTATIVE	00509F	-	-	-	-
REPRESENTATIVE	00509F	-	1,126,232	-	1,174,824
REPRESENTATIVE	80509F	-	-	-	-
REPRESENTATIVE	10509F	-	-	-	-
REPRESENTATIVE-SPEAKER OF THE HOUSE	00511F	-	30,829	-	31,754
SENATOR	50509F	-	-	-	-
SENATOR	10509F	-	-	-	-
SENATOR	00509F	-	553,938	-	587,412
SENATOR	00509F	-	-	-	-
SENATOR-PRESIDENT OF THE SENATE	00511F	-	30,829	-	31,754
Subtotal		-	\$1,741,828	-	\$1,825,744
Temporary and Seasonal		-	321,627	-	289,550
Subtotal		-	\$321,627	-	\$289,550
Total Salaries		-	\$2,063,455	-	\$2,115,294
Benefits					
Payroll Accrual			9,304		9,510
FICA			157,155		154,760
Retiree Health			26,670		27,450
Health Benefits			1,171,630		1,216,993
Subtotal			\$1,364,759		\$1,408,713
Total Salaries and Benefits		-	\$3,428,214	-	\$3,524,007
Cost Per FTE Position (Excluding Temporary and Seasonal)			-		-
Statewide Benefit Assessment			\$80,120		\$85,191
Payroll Costs		-	\$3,508,334	-	\$3,609,198
Purchased Services					
Clerical and Temporary Services			66,500		54,500
Management & Consultant Services			61,000		30,000
Legal Services			225,000		205,000
Other Contracts			2,200		2,500
Subtotal			\$354,700		\$292,000
Total Personnel		-	\$3,863,034	-	\$3,901,198
Distribution By Source Of Funds					
General Revenue		-	\$3,863,034	-	\$3,901,198
Total All Funds		-	\$3,863,034	-	\$3,901,198

The Program

General Assembly - Constitution Fiscal Advisory Staff

Program Mission

Perform fiscal research and analysis for the Legislature, its committees, and individual legislators.

Program Description

The Fiscal Advisory Staff to the House Finance Committee and to the Legislature operates under the supervision of the House Finance Committee. Duties include examination of revenues, review of appropriations and expenditures, and analysis of the State's indebtedness and Capital Improvement Program. The House Fiscal Advisor serves as one of three principals on the Revenue Consensus Forecasting and the Medical and Public Assistance Caseload Estimating Conferences.

Statutory History

The Fiscal Advisory Staff to the House Finance Committee was established as a separate agency in 1959. Statutory provisions for the Fiscal Advisory Staff to the House Finance Committee are contained in R.I.G.L. 22-6.

The Budget

General Assembly - Constitution Fiscal Advisory Staff

	2014 Audited	2015 Audited	2016 Enacted	2016 Revised	2017 Recommend
Expenditures By Subprogram					
Operations	1,573,288	1,464,798	1,846,092	1,899,935	1,893,563
Total Expenditures	\$1,573,288	\$1,464,798	\$1,846,092	\$1,899,935	\$1,893,563
Expenditures By Object					
Personnel	1,516,654	1,402,401	1,742,212	1,595,855	1,763,163
Operating Supplies and Expenses	56,634	62,397	91,880	226,080	105,400
Subtotal: Operating Expenditures	1,573,288	1,464,798	1,834,092	1,821,935	1,868,563
Capital Purchases and Equipment	-	-	12,000	78,000	25,000
Total Expenditures	\$1,573,288	\$1,464,798	\$1,846,092	\$1,899,935	\$1,893,563
Expenditures By Funds					
General Revenue	1,573,288	1,464,798	1,846,092	1,899,935	1,893,563
Total Expenditures	\$1,573,288	\$1,464,798	\$1,846,092	\$1,899,935	\$1,893,563

Personnel

General Assembly - Constitution Fiscal Advisory Staff

	Grade	FY 2016		FY 2017	
		FTE	Cost	FTE	Cost
Unclassified					
HOUSE FISCAL ADVISOR	07759F	1.0	174,195	1.0	175,120
DEPUTY FISCAL ADVISOR	07943F	1.0	116,113	1.0	116,729
PRINCIPAL ANALYST II	07749F	1.0	112,346	1.0	112,944
PRINCIPAL ANALYST I	07963F	1.0	105,546	1.0	106,106
ANALYST IV	07833F	1.0	77,550	1.0	77,962
SENIOR ANALYST I	07894F	1.0	77,550	1.0	77,962
ANALYST II	07992F	1.0	64,252	1.0	64,593
ANALYST II	07792F	2.0	128,496	2.0	128,496
ANALYST I	07722F	3.0	174,840	3.0	175,770
ADMINISTRATIVE ASSISTANT	07821F	1.0	58,138	1.0	58,446
Subtotal		13.0	\$1,089,026	13.0	\$1,094,128
Turnover		-	(93,388)	-	-
Subtotal		-	(\$93,388)	-	-
Total Salaries		13.0	\$995,638	13.0	\$1,094,128
Benefits					
Payroll Accrual			5,677		6,320
FICA			72,900		80,567
Retiree Health			59,440		65,321
Health Benefits			171,076		176,664
Retirement			245,325		288,192
Subtotal			\$554,418		\$617,064
Total Salaries and Benefits		13.0	\$1,550,056	13.0	\$1,711,192
Cost Per FTE Position (Excluding Temporary and Seasonal)			\$119,235		\$131,630
Statewide Benefit Assessment			\$45,799		\$51,971
Payroll Costs		13.0	\$1,595,855	13.0	\$1,763,163
Total Personnel		13.0	\$1,595,855	13.0	\$1,763,163
Distribution By Source Of Funds					
General Revenue		13.0	\$1,595,855	13.0	\$1,763,163
Total All Funds		13.0	\$1,595,855	13.0	\$1,763,163

The Program

General Assembly - Constitution Legislative Council

Program Mission

Legislative Council is the principal research and legal arm of the General Assembly. The Council's staff of attorneys, researchers, secretaries and clerical aides provides legislators with information on matters pending or to come before the Legislature. Legislative Council's principal activity is drafting of legislation for individual members.

Program Description

The Legislative Council has two main functions: bill drafting and research, with separate offices to handle each. The bill-drafting section is ordinarily referred to as Legislative Council. Staffed by a number of attorneys, the Council takes bill-drafting requests and prepares the legislation. Other staff members handle the typing, proofing and duplicating of the bill and its delivery to legislators in the House and Senate chambers.

Statutory History

The Legislative Council was established as a separate agency in 1939. Statutory provisions for the Legislative Council are contained in R.I.G.L. 22-8.

The Budget

General Assembly - Constitution Legislative Council

	2014 Audited	2015 Audited	2016 Enacted	2016 Revised	2017 Recommend
Expenditures By Subprogram					
Operations	3,789,825	3,692,521	5,018,501	4,916,064	5,357,247
Total Expenditures	\$3,789,825	\$3,692,521	\$5,018,501	\$4,916,064	\$5,357,247
Expenditures By Object					
Personnel	3,755,646	3,639,314	4,926,951	4,493,514	5,200,297
Operating Supplies and Expenses	34,179	53,207	80,050	352,550	111,950
Subtotal: Operating Expenditures	3,789,825	3,692,521	5,007,001	4,846,064	5,312,247
Capital Purchases and Equipment	-	-	11,500	70,000	45,000
Total Expenditures	\$3,789,825	\$3,692,521	\$5,018,501	\$4,916,064	\$5,357,247
Expenditures By Funds					
General Revenue	3,789,825	3,692,521	5,018,501	4,916,064	5,357,247
Total Expenditures	\$3,789,825	\$3,692,521	\$5,018,501	\$4,916,064	\$5,357,247

Personnel

General Assembly - Constitution Legislative Council

	Grade	FY 2016		FY 2017	
		FTE	Cost	FTE	Cost
Unclassified					
LEGAL COUNSEL (LEGISLATIVE COU	07823F	1.0	123,198	1.0	123,852
CHIEF ASST TO DIRECTOR	07991F	1.0	122,124	1.0	122,774
LEGAL COUNSEL - PT	07792F	0.6	65,692	0.6	66,041
LEGAL COUNSEL	07818H	0.6	64,768	0.6	65,112
LEGAL COUNSEL	07967F	0.6	61,541	0.6	61,868
LEGAL COUNSEL	07866F	0.6	58,164	0.6	58,473
SENIOR LEGAL COUNSEL	07906F	3.0	283,318	3.0	283,837
LEGAL COUNSEL	07743F	2.0	188,625	2.0	189,171
LEGAL COUNSEL--PT	07788F	1.0	93,624	1.0	94,121
LAW CLERK	00822F	0.6	54,565	0.6	54,565
LEGAL COUNSEL	07765F	0.6	51,308	0.6	51,581
LEGAL COUNSEL	07726F	0.6	48,065	0.6	48,320
ANALYST I	07765F	1.2	89,231	1.2	89,468
LEGAL COUNSEL	07734F	0.6	41,451	0.6	41,671
LEGISLATIVE ANALYST	07724F	1.0	62,476	1.0	62,808
RESEARCHER II	07978F	1.0	62,103	1.0	62,432
LEGAL COUNSEL	07756F	1.2	74,299	1.2	74,443
LEGAL COUNSEL--PT	07757F	0.6	34,864	0.6	35,049
CLERICAL (LEGISLATIVE COUNCIL)	07824F	1.0	57,917	1.0	58,224
LEGAL COUNSEL	07962F	0.6	34,335	0.6	34,518
CLERICAL	07811F	1.0	52,941	1.0	53,222
CONSTITUENT LIAISON	07976F	1.0	52,139	1.0	52,416
LEGAL COUNSEL	07795F	1.0	51,465	1.0	51,465
LEGISLATIVE AIDE	07709F	1.0	51,173	1.0	51,444
LEGAL COUNSEL	07781F	3.2	163,414	3.2	163,585
LEGAL COUNSEL--PT	07903F	0.6	30,124	0.6	30,284
LEGAL COUNSEL	07706F	0.6	30,035	0.6	30,195
LEGAL COUNSEL PT	07976F	0.6	29,794	0.6	29,952
SECRETARY	07928F	1.0	49,101	1.0	49,101
SECRETARY I	07922F	1.0	49,101	1.0	49,362
SECRETARY I	07974F	1.0	48,479	1.0	48,736
CLERICAL	07816F	1.0	44,753	1.0	44,991
LEGAL COUNSEL	07719F	0.6	26,536	0.6	26,677
SECRETARY	07984F	1.0	44,071	1.0	44,071
CLERICAL	07917F	1.0	43,435	1.0	43,435
LEGISLATIVE AIDE	07895F	1.0	43,338	1.0	43,568
LEGAL COUNSEL	07719F	0.6	25,525	0.6	25,661
LEGAL COUNSEL	07719F	0.6	25,521	0.6	25,657
SECRETARY	07925F	2.0	82,426	2.0	82,426
LEGAL COUNSEL	07961F	0.6	24,203	0.6	24,332
SECRETARY	07928F	1.0	40,304	1.0	40,518
LEGIS AIDE	07877H	1.0	40,213	1.0	40,427
PROOFREADER	07938F	1.0	40,114	1.0	40,327
LEGAL COUNSEL	07819F	0.6	23,898	0.6	24,026
LEGISLATIVE RESEARCHER	07907F	1.0	38,726	1.0	38,932

Personnel

General Assembly - Constitution Legislative Council

	Grade	FY 2016		FY 2017	
		FTE	Cost	FTE	Cost
LEGAL COUNSEL	07777F	1.2	46,333	1.2	46,457
LEGAL COUNSEL	07983F	0.6	21,733	0.6	21,848
SENIOR PROOFREADER	07923F	1.0	32,047	1.0	32,218
CLERICAL	07920F	2.0	61,014	2.0	61,014
PROOFER	07717F	1.0	30,426	1.0	30,588
Subtotal		50.2	\$3,014,050	50.2	\$3,025,263
Turnover		-	(451,987)	-	-
Subtotal		-	(\$451,987)	-	-
Total Salaries		50.2	\$2,562,063	50.2	\$3,025,263
Benefits					
Payroll Accrual			14,638		17,513
FICA			195,857		231,434
Retiree Health			152,957		180,612
Health Benefits			763,353		799,423
Retirement			631,288		796,851
Subtotal			\$1,758,093		\$2,025,833
Total Salaries and Benefits		50.2	\$4,320,156	50.2	\$5,051,096
Cost Per FTE Position (Excluding Temporary and Seasonal)			\$86,059		\$100,619
Statewide Benefit Assessment			\$117,858		\$143,701
Payroll Costs		50.2	\$4,438,014	50.2	\$5,194,797
Purchased Services					
Clerical and Temporary Services			500		500
Legal Services			55,000		5,000
Subtotal			\$55,500		\$5,500
Total Personnel		50.2	\$4,493,514	50.2	\$5,200,297
Distribution By Source Of Funds					
General Revenue		50.2	\$4,493,514	50.2	\$5,200,297
Total All Funds		50.2	\$4,493,514	50.2	\$5,200,297

The Program

General Assembly - Constitution Joint Comm. on Legislative Services

Program Mission

The Joint Committee on Legislative Services (JCLS) is responsible for all administrative matters affecting the operations of the General Assembly. The Office also coordinates the Legislative Data Services and Telecommunications - Cable TV activities.

Program Description

Under the direction of the Joint Committee on Legislative Services, the JCLS Administrative Office is responsible for the overall day-to-day operations of the General Assembly. Matters pertaining to personnel, payroll and benefits, operations, purchasing and accounts payable are handled through this office. The JCLS Office prepares and submits the annual budget and oversees the finances of the Legislature. The operations staff is responsible for the purchasing function, the upkeep and maintenance of the legislative offices in the State House, the disbursement of supplies to the various offices of the JCLS, and is responsible for repairs to equipment and furnishings of the Legislature. All payables of the Legislature are processed by utilizing the State's RIFANS financial system.

Statutory History

The Joint Committee on Legislative Affairs was established as a separate agency in 1960. Statutory provisions for the Joint Committee on Legislative Affairs are contained in R.I.G.L. 22-11.

The Budget

General Assembly - Constitution Joint Comm. on Legislative Services

	2014 Audited	2015 Audited	2016 Enacted	2016 Revised	2017 Recommend
Expenditures By Subprogram					
Operations	20,824,899	21,485,556	23,170,750	25,171,175	24,414,329
Total Expenditures	\$20,824,899	\$21,485,556	\$23,170,750	\$25,171,175	\$24,414,329
Expenditures By Object					
Personnel	18,028,661	18,621,715	19,970,610	19,855,835	20,845,819
Operating Supplies and Expenses	575,607	548,488	750,640	2,155,840	786,510
Assistance and Grants	2,158,670	2,165,230	2,300,000	2,300,000	2,300,000
Subtotal: Operating Expenditures	20,762,938	21,335,433	23,021,250	24,311,675	23,932,329
Capital Purchases and Equipment	61,961	150,123	149,500	859,500	482,000
Total Expenditures	\$20,824,899	\$21,485,556	\$23,170,750	\$25,171,175	\$24,414,329
Expenditures By Funds					
General Revenue	20,824,899	21,485,556	23,170,750	25,171,175	24,414,329
Total Expenditures	\$20,824,899	\$21,485,556	\$23,170,750	\$25,171,175	\$24,414,329

Personnel

General Assembly - Constitution Joint Comm. on Legislative Services

	Grade	FY 2016		FY 2017	
		FTE	Cost	FTE	Cost
Unclassified					
CHIEF OF STAFF	07834F	1.0	177,212	1.0	178,152
EXECUTIVE DIRECTOR TO JCLS	07703F	1.0	155,108	1.0	155,931
LEGAL COUNSEL TO THE SEN PRES.	07855F	1.0	153,664	1.0	154,480
DEP CHF OF STAFF/DIR OF POLICY	07823F	1.0	147,837	1.0	148,622
CHIEF OF STAFF	07834F	1.0	147,676	1.0	148,460
SENATE FISCAL ADVISOR	07960F	1.0	144,090	1.0	144,855
DIRECTOR OF HOUSE POLICY	07878F	1.0	140,513	1.0	141,259
CHIEF LEGAL COUNSEL	07855F	1.0	134,456	1.0	135,170
DIRECTOR OF LAW REVISION	07855F	1.0	134,456	1.0	135,170
LEGAL COUNSEL	07711F	1.0	132,770	1.0	133,474
HOUSE DIR OF COMMUNICATIONS	07711F	1.0	126,735	1.0	127,407
SENIOR POLICY ANALYST	07979F	1.0	124,330	1.0	125,143
LEGAL COUNSEL -PT	07736F	0.6	73,753	0.6	74,146
DEP CHIEF OF STAFF/LEGISLATION	07943F	1.0	121,642	1.0	122,288
DIRECTOR OF IT	07898F	1.0	121,269	1.0	121,912
LEGAL COUNSEL - PT	07731F	0.6	70,580	0.6	70,955
LEGAL COUNSEL/HOUSE MAJ LEADER	07866F	1.0	116,329	1.0	116,946
SENIOR DEPUTY CHIEF OF STAFF	07943F	1.0	110,584	1.0	111,171
DIR OF LEGAL SVS FOR HSE COMM	07736F	0.6	64,134	0.6	64,475
LEGISLATIVE PERSONNEL ADMIN	07822F	1.0	105,545	1.0	106,106
DEPUTY FISCAL ADVISOR	07793F	1.0	101,579	1.0	102,118
SECRETARY OF THE SENATE	07743F	1.0	100,743	1.0	101,278
DEPUTY LEGAL COUNSEL	07963F	1.0	100,520	1.0	101,053
LEGAL COUNSEL	07963F	1.0	100,520	1.0	101,053
SENATE PARLIAMENTARIAN	07993F	0.6	59,370	0.6	59,686
EXECUTIVE DIRECTOR	07940F	1.0	98,889	1.0	99,415
EXECUTIVE ASSISTANT	07783F	1.0	97,511	1.0	98,033
LEGAL COUNSEL	07822F	1.0	95,489	1.0	95,996
ASST DIRECTOR OF LAW REVISION	07959F	0.7	64,649	0.7	63,941
SPEC ASST TO MAJORITY LEADER	07714F	1.0	92,201	1.0	92,691
HOUSE READING CLERK	07820F	0.9	79,261	0.9	79,682
SENIOR FINANCIAL OFFICER	07894F	1.0	91,121	1.0	91,605
HOUSE PARLIAMENTARIAN-LEG COUN	07702F	0.6	54,480	0.6	54,770
EXECUTIVE ASSISTANT	07721F	1.0	89,542	1.0	90,017
DIRECTOR OF CAPITOL TV	07797F	1.0	89,250	1.0	89,723
ADMINISTRATIVE ASSISTANT	07721F	1.0	87,676	1.0	88,141
SR LEGISLATIVE FISCAL ANLAYST	07784F	1.0	86,557	1.0	87,017
DEPUTY DIRECTOR IT	07854F	1.0	86,317	1.0	85,110
DIRECTOR OF CONSTITUENT SERVICES	07915F	1.0	84,035	1.0	84,481
SR DATA/ SYSTEM SPECIALIST	07997F	1.0	83,953	1.0	84,398
ADMINISTRATIVE ASSISTANT	07716F	1.0	82,935	1.0	83,375
DIRECTOR OF COMMUNICATIONS	07765F	1.0	81,983	1.0	82,418
SUPERVISING SVS ADMINISTRATOR	07896F	1.0	80,328	1.0	80,755
LEGAL COUNSEL	07916F	0.6	48,179	0.6	48,436
DIR OF CONSTITUENT SERVICES	07915F	1.0	80,215	1.0	80,641

Personnel

General Assembly - Constitution Joint Comm. on Legislative Services

	Grade	FY 2016		FY 2017	
		FTE	Cost	FTE	Cost
TELEVISION MAINTENANCE ENGINEER	07771F	1.0	79,526	1.0	79,948
DEPUTY POLICY DIRECTOR	007771	1.0	79,524	1.0	81,115
HOUSE RECORDING CLERK	07857H	0.6	47,253	0.6	47,504
ADMINISTRATIVE ASSISTANT	07721F	1.0	78,349	1.0	78,765
LEGAL COUNSEL	07916F	0.6	46,190	0.6	46,436
CHIEF OF STAFF	07725F	1.0	74,669	1.0	75,065
PROGRAM COORDINATOR	07721F	1.0	74,618	1.0	76,110
LEGISLATIVE GRANTS COORDINATOR	07865F	1.0	74,329	1.0	74,724
LEGAL COUNSEL/SPECIAL PROJECTS	07911F	1.0	74,109	1.0	75,591
SR. PRODUCER/DIRECTOR	07729F	1.0	74,046	1.0	74,439
CHIEF OF STAFF	07871F	1.0	73,984	1.0	74,376
DPTY DIR OF CONSTITUENT SERVIC	07916F	1.0	73,318	1.0	73,707
LEGIS. COORDINATOR	07728F	1.0	73,169	1.0	73,557
IT TECHNICAL SPECIALIST II	07710F	1.0	72,443	1.0	72,828
SUPERVISOR LEGISLATIVE PRESS	007797	2.0	143,949	1.0	83,118
ASSISTANT TO ADMINISTRATOR	07747F	1.0	71,572	1.0	71,953
LEGISLATIVE FISCAL ANALYST II	07725F	1.0	71,275	1.0	71,653
POLICY ANALYST II	07893F	1.0	70,247	1.0	70,620
FISCAL ANALYST II	07893F	0.6	41,905	0.6	42,372
LEGISLATIVE AIDE	07710F	1.0	69,151	1.0	69,518
PRINCIPAL POLICY ANALYST	07734F	1.0	69,085	1.0	69,452
FISCAL ANALYST II	07725F	1.0	67,881	1.0	68,241
FISCAL ANALYST II	07725F	1.0	67,881	1.0	68,241
DIRECTOR OF SENATE SERVICES	07826F	1.0	67,865	1.0	68,225
IT TECHNICAL SPECIALIST II	07871F	1.0	67,819	1.0	68,179
SECRETARY	07925F	1.0	67,291	1.0	67,648
SENIOR POLICY ANALYST	07996F	1.0	65,593	1.0	65,941
SENIOR PROGRAMMER	07771F	1.0	65,477	1.0	65,477
ADMIN OF HOUSE OVERSIGHT	07936F	1.0	65,218	1.0	65,564
OPERATIONS SUPERVISOR	07864F	1.0	65,199	1.0	65,545
LEGISLATIVE FINANCIAL OFFICER	07992F	1.0	64,252	1.0	64,593
POLICY ANALYST II	07715F	1.0	64,138	1.0	64,478
DIRECTOR OF COMMUNICATIONS	07863F	1.0	63,811	1.0	64,150
SECRETARY	07856F	1.0	63,440	1.0	63,777
POLICY ANALYST	07729F	1.0	63,018	1.0	63,352
LEGAL COUNSEL	07735F	0.6	37,184	0.6	37,382
SECRETARY	07955F	1.0	61,596	1.0	61,923
SUPERVISOR CLERICAL SERVICES	07727F	1.0	61,485	1.0	61,811
SUPERVISOR VET'S AFFAIRS OFFI	07908F	1.0	60,810	1.0	61,132
EXECUTIVE ASSISTANT	07776F	1.0	60,624	1.0	60,946
POLICY ANALYST I	07868H	0.6	36,214	0.6	36,406
ANALYST	07922F	1.0	58,922	1.0	60,100
SENIOR POLICY ANALYST	07708F	1.0	57,956	1.0	58,263
DATA ANALYST	07786F	1.0	57,915	1.0	58,224
POLICY ANALYST	07818F	1.0	57,781	1.0	58,088
LEGISLATIVE COORDINATOR	07776F	1.0	57,738	1.0	58,044

Personnel

General Assembly - Constitution Joint Comm. on Legislative Services

	Grade	FY 2016		FY 2017	
		FTE	Cost	FTE	Cost
SECRETARY	07955F	1.0	57,664	1.0	57,970
CONSTITUENT LIAISON	07812F	1.0	57,642	1.0	57,950
LEGISLATIVE ASST --PT	07755F	0.6	34,576	0.6	34,760
LEGAL COUNSEL	07886F	0.6	34,572	0.6	34,756
LEGAL COORDINATOR	07709F	1.0	57,265	1.0	57,569
SECRETARY	07989F	1.0	56,765	1.0	57,066
COMPUTER OPERATOR	07824F	1.0	56,711	1.0	57,012
POLICY ANALYST	07723F	1.0	56,704	1.0	57,005
SR. PRESS OPERATOR	07891F	1.0	56,456	1.0	56,755
CLERICAL	07881F	1.0	56,388	1.0	56,688
OPERATIONS PROJECT COORD.	07779F	1.0	55,848	1.0	56,145
LEGISLATIVE COORDINATOR	07937F	1.0	55,320	1.0	55,614
ADMINISTRATIVE ASSISTANT - PT	07949F	1.0	55,213	1.0	55,506
SECRETARY	07955F	1.0	55,043	1.0	55,335
SECRETARY I	07802F	1.0	54,946	1.0	55,238
ASSISTANT COMPUTER OPERATOR	07951F	1.0	54,630	1.0	54,920
LEGISLATIVE AIDE	07756F	1.0	54,375	1.0	54,663
LEGISLATIVE AIDE	07790F	1.0	54,369	1.0	54,658
LEGISLATIVE ASSISTANT	07790F	1.0	54,369	1.0	54,658
ASSISTANT ENGINEER	07859F	1.0	54,353	1.0	54,642
POLICY ANALYST	07757F	0.6	30,110	0.6	30,270
TV TECHNICIAN II	07730F	1.0	53,753	1.0	54,038
ADMINISTRATIVE ASSIST.	07973F	1.0	53,718	1.0	54,003
PUBLICIST	07994F	1.0	53,456	1.0	53,739
ADMINISTRATIVE ASSISTANT	07742F	1.0	53,255	1.0	53,537
ADMINISTRATIVE ASSISTANT	07897F	1.0	53,189	1.0	53,472
ADMINISTRATIVE ASSISTANT	07955F	1.0	52,422	1.0	52,700
CONST. SERVICES CASEWORKER	07946F	1.0	52,235	1.0	52,512
TV TECHNICIAN II	07944F	1.0	52,004	1.0	52,280
POLICY ANALYST/COMM ASSISTANT	07887F	1.0	51,868	1.0	52,143
SECRETARY	07887F	1.0	51,868	1.0	52,143
CONSTITUENT SERVICES LIAISON	07887F	0.6	30,942	0.6	29,796
TV DIRECTOR	07802F	1.0	51,439	1.0	51,712
CONSTITUENT LIAISON	00973F	1.0	51,276	1.0	51,548
T. V. TECHNICIAN	07973F	1.0	51,276	1.0	51,548
ANALYST	07857F	1.0	51,092	1.0	51,363
CLERICAL	07920F	1.0	51,001	1.0	51,272
LEGISLATIVE AIDE	07994F	1.0	50,910	1.0	51,180
SECRETARY I	07773F	1.0	50,612	1.0	50,880
ADMINISTRATIVE ASSISTANT	07779F	1.0	50,196	1.0	50,462
DATA ANALYST	07824F	2.0	98,941	1.0	50,946
SECRETARY/CLERK	07802F	1.0	49,101	1.0	49,361
PRESS OPERATOR	07782F	3.0	145,414	3.0	146,186
LEGISLATIVE ASSISTANT	07994F	2.0	96,744	2.0	105,204
LEGAL COUNSEL	07843F	0.6	28,982	0.6	29,136
LEGISLATIVE PROJECT COORDINATO	07869F	1.0	48,264	1.0	48,520

Personnel

General Assembly - Constitution Joint Comm. on Legislative Services

	Grade	FY 2016		FY 2017	
		FTE	Cost	FTE	Cost
T.V. TECHNICIAN	07819F	1.0	48,095	1.0	48,351
LEGISLATIVE ASSISTANT	07848H	0.6	28,774	0.6	28,927
ASSISTANT PROGRAM DIRECTOR	07779F	1.0	47,806	1.0	48,059
LEGISLATIVE AIDE	07857F	1.6	76,463	1.6	77,584
CLERK CORPORATIONS COMMITTEE	07892F	1.0	47,508	1.0	47,760
LEGISLATIVE AIDE	07892F	1.0	47,508	1.0	47,760
SECRETARY	07928F	1.0	46,349	1.0	46,595
CLERK- LABOR COMMITTEE	07974F	0.6	27,765	0.6	27,912
POLICY ANALYST	07764F	0.6	27,734	0.6	27,882
ASSISTANT CLERK - FINANCE	07773F	1.0	46,011	1.0	46,255
LEGISLATIVE AIDE	07773F	1.0	46,011	1.0	46,255
LEGISLATIVE ASSISTANT	07773F	1.0	46,011	1.0	46,255
LEGISLATIVE ASSISTANT	07773F	1.0	46,011	1.0	46,255
NETWORK & SYSTEMS TECHNICIAN I	07773F	1.0	46,011	1.0	46,255
TV TECHNICIAN	07773F	1.0	46,011	1.0	46,255
SECRETARY	07819F	1.0	46,005	1.0	46,249
LEGISLATIVE ASSISTANT	07764F	0.6	27,575	0.6	27,882
SPECIAL PROJECT COORDINATOR	07819F	0.6	27,483	0.6	27,629
PUBLICIST	07859F	1.0	45,294	1.0	45,535
LEGISLATIVE PROJECT COORDINATO	07766F	1.0	45,224	1.0	45,464
LEGISLATIVE PROJECT COORDINATO	07853F	1.0	44,971	1.0	45,210
RESEARCH ASSISTANT	07719F	1.0	44,662	1.0	44,899
LEGIS AIDE	07839H	1.0	44,255	1.0	44,490
SECRETARY	07819F	1.0	43,913	1.0	44,146
SECRETARY	07895F	1.0	43,338	1.0	43,568
ASSISTANT PUBLICIST	07947F	1.0	43,202	1.0	43,431
LEGISLATIVE AIDE	07872F	1.0	42,831	1.0	43,058
CLERICAL	07817F	1.0	42,656	1.0	42,883
LEGAL COUNSEL	07719F	0.6	25,525	0.6	25,661
LEGAL COUNSEL	07719F	0.6	25,525	0.6	25,661
LEGISLATIVE ASSISTANT	07713F	1.0	42,541	1.0	42,767
SECRETARY	07713F	1.0	42,541	1.0	42,767
LEGAL COUNSEL	07719F	0.6	25,521	0.6	25,657
LEGISLATIVE AIDE	07777F	1.0	42,472	1.0	42,698
LEGAL COUNSEL	07907F	0.6	25,448	0.6	25,584
LEGAL COUNSEL	07941F	0.6	25,275	0.6	25,410
ADMINISTRATIVE ASSISTANT	07819F	1.0	41,822	1.0	42,044
LEGISLATIVE AIDE	07958F	1.0	41,564	1.0	41,784
LEGAL COUNSEL	07760F	0.6	24,894	0.6	25,026
LEGISLATIVE ASSISTANT	07758F	1.0	41,355	1.0	41,574
LEGAL COUNSEL	07895F	1.0	41,275	1.0	41,494
LEGISLATIVE ASSISTANT	07858F	1.0	39,807	1.0	40,019
TV TECHNICIAN II	07924F	1.0	39,759	1.0	39,759
SENATE SERVICES ASSISTANT	07808H	0.6	21,472	0.6	21,586
COMPUTER TECHNICIAN	07820H	0.4	16,572	0.4	16,572
SECRETARY	07984F	1.0	38,197	1.0	38,400

Personnel

General Assembly - Constitution Joint Comm. on Legislative Services

	Grade	FY 2016		FY 2017	
		FTE	Cost	FTE	Cost
SECRETARY	07984F	1.0	38,197	1.0	40,320
LEGIS. AIDE	07988F	1.0	38,072	1.0	38,274
SECRETARY	07739F	1.0	37,433	1.0	37,632
LEGISLATIVE ASSISTANT	07907F	1.0	36,882	1.0	36,882
COPY ROOM COORDINATOR	07846F	1.0	36,221	1.0	36,413
CLERK	07827F	0.6	21,452	0.6	21,690
LEGISLATIVE AIDE	07872F	1.0	35,692	1.0	35,882
LEGISLATIVE AIDE	07926F	1.6	56,437	1.6	56,549
LEGISLATIVE AIDE-PT	07874F	1.0	34,921	1.0	35,106
ADMINISTRATIVE AIDE	07809F	1.0	33,756	2.0	82,276
CLERICAL--PT	07869F	0.6	19,559	0.6	19,663
SENATE SERVICES ASSISTANT	07971F	1.0	32,044	1.0	32,215
LEGISLATIVE AIDE	07923F	1.0	30,522	1.0	30,684
CAMERA OPERATOR	07810F	1.0	24,761	1.0	24,761
PUBLICICIST	07948F	-	-	1.0	59,745
Subtotal		190.1	\$12,510,073	190.1	\$12,584,756
Turnover		-	(384,711)	-	-
Subtotal		-	(\$384,711)	-	-
Total Salaries		190.1	\$12,125,362	190.1	\$12,584,756
Benefits					
Payroll Accrual			69,224		72,793
FICA			911,415		948,221
Retiree Health			723,885		751,306
Health Benefits			2,280,482		2,354,133
Retirement			2,987,694		3,314,828
Subtotal			\$6,972,700		\$7,441,281
Total Salaries and Benefits		190.1	\$19,098,062	190.1	\$20,026,037
Cost Per FTE Position (Excluding Temporary and Seasonal)			\$100,463		\$105,345
Statewide Benefit Assessment			\$557,773		\$597,782
Payroll Costs		190.1	\$19,655,835	190.1	\$20,623,819
Purchased Services					
Information Technology			130,000		210,000
Management & Consultant Services			66,500		8,500
Buildings and Ground Maintenance			3,500		3,500
Subtotal			\$200,000		\$222,000
Total Personnel		190.1	\$19,855,835	190.1	\$20,845,819
Distribution By Source Of Funds					
General Revenue		190.1	\$19,855,835	190.1	\$20,845,819
Total All Funds		190.1	\$19,855,835	190.1	\$20,845,819

The Program

General Assembly - Constitution Auditor General

Program Mission

Provides independent audits, accounting, and evaluation of State Government programs to the General Assembly for its legislative oversight and capability.

Program Description

The Office of the Auditor General assists the General Assembly in reviewing compliance, efficiency, economy, and effectiveness of state programs. The Office of the Auditor General conducts financial and program audits, which encompass the investigation of all matters relating to a review of program costs and the evaluation of program performance; completes the annual post-audit of the receipts and expenditures of the State; and, in accordance with the Single Audit Act of 1984, circular number A-128, issued by the United States Office of Management and Budget, and Chapter 41 of the Rhode Island General Laws, conducts annual audits of federally-funded programs administered by the State.

Statutory History

The Office of the Auditor General was established as a separate agency in 1974. Statutory provisions for the Office of the Auditor General are contained in R.I.G.L. 22-13-1.

The Budget

General Assembly - Constitution Auditor General

	2014 Audited	2015 Audited	2016 Enacted	2016 Revised	2017 Recommend
Expenditures By Subprogram					
Operations	4,656,039	4,439,628	5,579,580	5,377,177	5,645,215
Total Expenditures	\$4,656,039	\$4,439,628	\$5,579,580	\$5,377,177	\$5,645,215
Expenditures By Object					
Personnel	4,271,004	3,977,787	5,044,503	4,822,600	5,208,565
Operating Supplies and Expenses	377,017	454,585	505,077	504,577	416,650
Subtotal: Operating Expenditures	4,648,021	4,432,372	5,549,580	5,327,177	5,625,215
Capital Purchases and Equipment	8,018	7,256	30,000	50,000	20,000
Total Expenditures	\$4,656,039	\$4,439,628	\$5,579,580	\$5,377,177	\$5,645,215
Expenditures By Funds					
General Revenue	3,472,789	3,114,628	3,898,707	3,761,354	3,948,643
Restricted Receipts	1,183,250	1,325,000	1,680,873	1,615,823	1,696,572
Total Expenditures	\$4,656,039	\$4,439,628	\$5,579,580	\$5,377,177	\$5,645,215

Personnel

General Assembly - Constitution

Auditor General

	Grade	FY 2016		FY 2017	
		FTE	Cost	FTE	Cost
Unclassified					
AUDITOR GENERAL	07703F	1.0	156,126	1.0	159,248
SENIOR AUDIT MANAGER	07752F	1.0	116,546	1.0	118,877
SENIOR AUDIT MANAGER	07792F	1.0	113,305	1.0	115,571
SENIOR AUDIT MANAGER	07906F	1.0	109,865	1.0	112,062
AUDIT MANAGER	07985F	1.0	102,667	1.0	104,720
AUDIT MANAGER	07743F	1.0	97,180	1.0	99,123
AUDIT MANAGER	07788F	1.0	94,282	1.0	96,168
LEGAL COUNSEL	07850F	0.6	56,096	0.6	57,218
INFORMATION SYSTEMS AUDIT MGR	07972F	1.0	88,774	1.0	90,549
ASSISTANT AUDIT MANAGER	07726F	1.0	86,671	1.0	88,404
SUPERVISING AUDITOR	07716F	1.0	85,294	1.0	87,000
SUPERVISING AUDITOR	07940F	1.0	85,283	1.0	86,989
SUPERVISING IT AUDITOR	07997F	1.0	84,504	1.0	86,194
SUPERVISING AUDITOR	07716F	1.0	83,704	1.0	85,313
SUPERVISING AUDITOR	07771F	1.0	82,299	1.0	83,945
PRINCIPAL IT AUDITOR	07997F	1.0	77,462	1.0	79,011
PRINCIPAL AUDITOR	07915F	1.0	75,295	1.0	76,801
PRINCIPAL AUDITOR	07982F	1.0	72,244	1.0	73,689
ADMINISTRATIVE OFFICER	07750F	1.0	70,368	1.0	71,775
PRINCIPAL AUDITOR	07929F	1.0	70,048	1.0	71,449
PRINCIPAL AUDITOR	07835F	1.0	68,633	1.0	70,006
DATA SYSTEMS COORDINATOR	07957F	1.0	66,306	1.0	67,632
PRINCIPAL AUDITOR	07747F	2.0	128,258	2.0	130,824
COMMISION LIAISON OFFICER	07975F	1.0	63,352	1.0	64,619
PRINCIPAL AUDITOR	07804F	1.0	63,289	1.0	64,505
PRINCIPAL AUDITOR	07804F	1.0	62,682	1.0	63,936
SENIOR AUDITOR	07724F	1.0	58,644	1.0	59,817
SENIOR I.T. AUDITOR	07901F	1.0	58,418	1.0	59,587
ASSISTANT DATA SYSTEMS COORD	07976F	1.0	56,283	1.0	57,409
ADMINISTRATIVE ASSISTANT	07773F	1.0	52,150	1.0	53,193
ADMINISTRATIVE AIDE	07995F	1.0	47,229	1.0	48,174
SENIOR AUDITOR	07769F	1.0	47,143	1.0	48,086
SENIOR AUDITOR	07769F	1.0	47,143	1.0	48,086
SENIOR AUDITOR	07824F	2.0	93,912	2.0	95,716
AUDITOR	07766F	6.0	254,700	6.0	259,794
TRNG DIR/MUNICIPAL TRNG LIAISO	00784F	1.0	42,450	1.0	43,299
AUDITOR	07918F	1.0	42,142	1.0	42,985
ADMINISTRATIVE AIDE	07917F	0.6	23,351	0.6	23,817
SECRETARY (AUDITOR GEN.)	00756F	1.0	37,769	1.0	38,495
Subtotal		45.2	\$3,121,867	45.2	\$3,184,086

Personnel

General Assembly - Constitution

Auditor General

	Grade	FY 2016		FY 2017	
		FTE	Cost	FTE	Cost
Merit Increases - Auditor General		-	20,000	-	30,000
Turnover		-	(117,289)	-	-
Subtotal		-	(\$97,289)	-	\$30,000
Total Salaries		45.2	\$3,024,578	45.2	\$3,214,086
Benefits					
Payroll Accrual			17,239		18,558
FICA			229,092		243,723
Retiree Health			180,723		192,116
Health Benefits			480,406		540,461
Retirement			736,341		837,087
Subtotal			\$1,643,801		\$1,831,945
Total Salaries and Benefits		45.2	\$4,668,379	45.2	\$5,046,031
Cost Per FTE Position (Excluding Temporary and Seasonal)			\$103,283		\$111,638
Statewide Benefit Assessment			\$139,071		\$152,534
Payroll Costs		45.2	\$4,807,450	45.2	\$5,198,565
Purchased Services					
Management & Consultant Services			7,000		10,000
Other Contracts			650		-
Buildings and Ground Maintenance			7,500		-
Subtotal			\$15,150		\$10,000
Total Personnel		45.2	\$4,822,600	45.2	\$5,208,565
Distribution By Source Of Funds					
General Revenue		45.2	\$3,373,150	45.2	\$3,642,988
Restricted Receipts		-	\$1,449,450	-	\$1,565,577
Total All Funds		45.2	\$4,822,600	45.2	\$5,208,565

The Program

General Assembly - Constitution

Special Legislative Commissions

Program Mission

Special Legislative Commissions include boards and commissions established for the promotion of certain goals and objectives, and to address items of local, regional and national concern.

Program Description

Included in this program are: the Commission on Uniform State Laws, the Criminal Justice Commission, and the Martin Luther King Commission.

Statutory History

Special Legislative Commissions are generally established under the authority granted to the General Assembly in the Rhode Island State Constitution. Specific provisions for various commissions are also established within the Rhode Island General Laws.

The Budget

General Assembly - Constitution Special Legislative Commissions

	2014 Audited	2015 Audited	2016 Enacted	2016 Revised	2017 Recommend
Expenditures By Subprogram					
Operations	7,536	7,430	13,900	13,900	13,900
Total Expenditures	\$7,536	\$7,430	\$13,900	\$13,900	\$13,900
Expenditures By Object					
Operating Supplies and Expenses	7,536	7,430	13,900	13,900	13,900
Subtotal: Operating Expenditures	7,536	7,430	13,900	13,900	13,900
Total Expenditures	\$7,536	\$7,430	\$13,900	\$13,900	\$13,900
Expenditures By Funds					
General Revenue	7,536	7,430	13,900	13,900	13,900
Total Expenditures	\$7,536	\$7,430	\$13,900	\$13,900	\$13,900