

State of Rhode Island and Providence Plantations

Budget



Fiscal Year 2014

Volume I – General Government, Quasi-Public
Agencies and Component Units

Lincoln D. Chafee, Governor

Agency

Board Of Elections

Agency Mission

To protect the integrity of the electoral process and to effectively and efficiently administer the provisions of United States and Rhode Island election laws.

Agency Description

The Board of Elections supervises all elections and state and local referenda. The Board supervises the maintenance, preparation and delivery of electronic optical-scan voting equipment, election return forms and other supplies used at each polling place. The Board instructs and certifies all election officials assigned to polls and prepares and distributes poll worker guides and related materials. The Board also appoints, trains and assigns bi-partisan pairs of supervisors for the mail ballot program for institutionally confined persons. The Board certifies the results of all elections under its jurisdiction, including tabulating machine and mail ballot votes cast; conducts recounts; certifies results to the Secretary of State; issues certificates of election to candidates; and provides an official tabulation of returns.

The Board oversees voter registration and public education activities and provides all registration materials used in the State. The Board trains and supervises all individuals who serve as statewide voter registration agents. The agency conducts voter registration drives throughout the State and at each institution of higher education in Rhode Island. It oversees and coordinates the registration of voters at other state agencies and departments as part of the National Voter Registration Act. The Board carries out the mandates of the Rhode Island Campaign Contributions and Expenditures Reporting Act (the "Act"). The agency oversees and monitors the campaign finance activities of candidates, political action committees and state vendors. The Board's responsibilities also include the development, printing and distribution of forms required for candidate, committee and vendor reports as well as the publication of manuals describing and explaining the requirements set forth in the statutes. The Board reviews and makes available for inspection all reports filed, prepares summaries and an annual report, and is authorized to investigate suspected violations of the Act. The agency oversees and administers the public financing of campaigns program for each of the State's five general offices.

Statutory History

Chapter 825 of the Public Laws of 1901 created the "State Returning Board," which was replaced by Chapter 1040 of the Public Laws of 1941 which created the "Board of Elections" as a partisan board. Chapter 312 of the Public Laws of 1979 amended the law to establish the Board of Elections as a non-partisan board. R.I.G.L. 17-7 sets forth its duties and powers. R.I.G.L. 17-25 sets out the mandates of the Rhode Island Campaign Contributions and Expenditure Reporting Act (public financing of campaigns). R.I.G.L. 42-6 provides for the registration of voters at other state agencies. R.I.G.L. 17-27 provides for reporting requirements and monitoring of political contributions by state vendors. R.I.G.L. 17-19 provides for the use of an optical scan precinct count voting system in state elections.

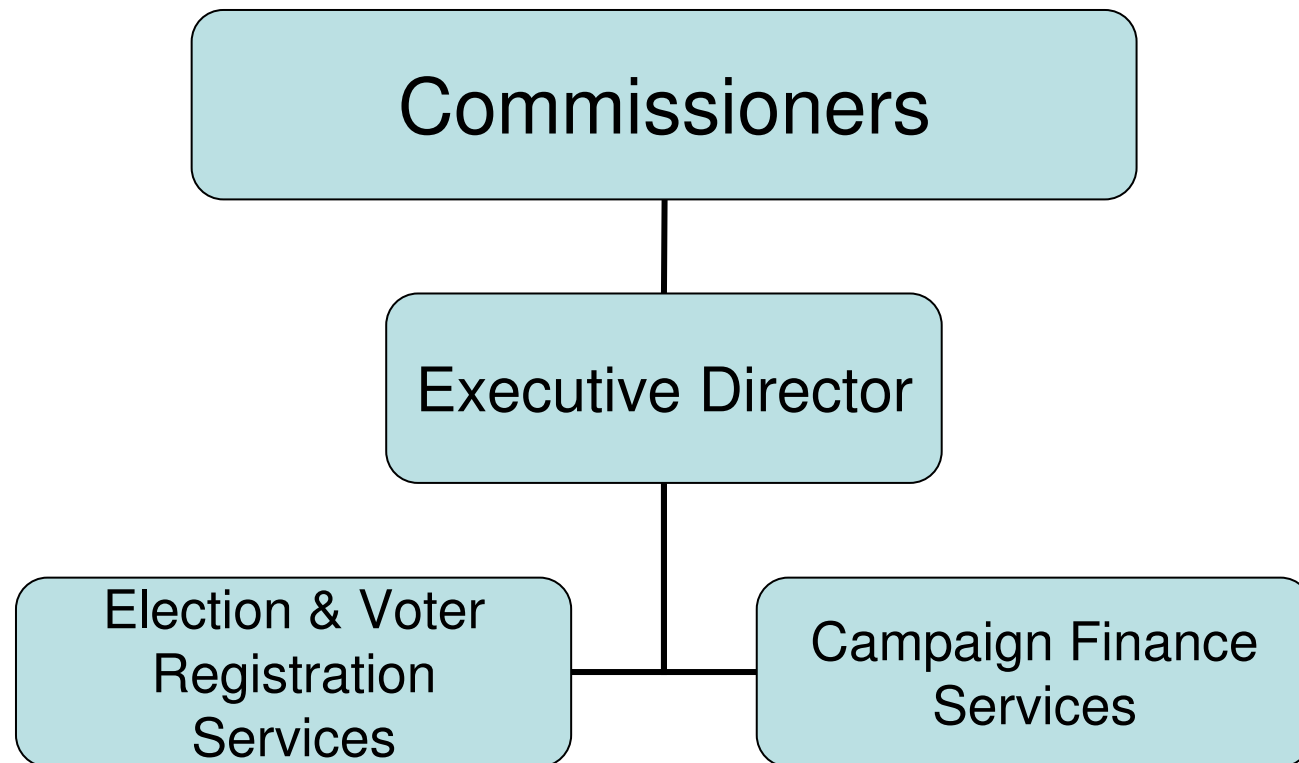
The Budget

Board Of Elections Central Management

	2011 Audited	2012 Audited	2013 Enacted	2013 Revised	2014 Recommend
Expenditures By Subprogram					
Operations	3,400,118	1,660,728	1,952,116	1,921,823	1,739,361
Total Expenditures	\$3,400,118	\$1,660,728	\$1,952,116	\$1,921,823	\$1,739,361
Expenditures By Object					
Personnel	1,528,996	1,439,954	1,602,442	1,313,345	1,309,203
Operating Supplies and Expenses	184,298	178,084	349,674	608,478	430,158
Assistance and Grants	1,656,210	4,130	-	-	-
Subtotal: Operating Expenditures	3,369,504	1,622,168	1,952,116	1,921,823	1,739,361
Capital Purchases and Equipment	30,614	38,560	-	-	-
Total Expenditures	\$3,400,118	\$1,660,728	\$1,952,116	\$1,921,823	\$1,739,361
Expenditures By Funds					
General Revenue	3,290,424	1,610,728	1,952,116	1,921,823	1,739,361
Federal Funds	109,694	50,000	-	-	-
Total Expenditures	\$3,400,118	\$1,660,728	\$1,952,116	\$1,921,823	\$1,739,361

The Agency

Board of Elections



Personnel

Board Of Elections Central Management

	Grade	FY 2013		FY 2014	
		FTE	Cost	FTE	Cost
Unclassified					
ADMINISTRATIVE ASSISTANT	00312A	1.0	36,509	1.0	36,509
COMMISSION CHAIRMAN (BD OF EL)	00510F	-	7,000	-	7,000
COMMISSIONER BOARD OF ELEC	00510F	-	28,000	-	28,000
CONFIDENTIAL SECRETARY	00817A	1.0	43,873	1.0	43,873
EXECUTIVE DIRECTOR	00844A	1.0	137,574	1.0	137,574
PLANNING AND PROGRAM DEVELOPMENT	00320A	4.0	198,413	4.0	198,413
PRINCIPAL PROJECTS MANAGER	00831A	1.0	82,130	1.0	82,130
SENIOR ADMINISTRATIVE AIDE/TRAINING	00319A	1.0	52,292	1.0	52,292
SENIOR RECEPTIONIST	00312A	1.0	38,334	1.0	38,334
SUPERVISING ACCOUNTANT	00831A	1.0	74,770	1.0	74,770
Subtotal		11.0	\$698,895	11.0	\$698,895
Temporary and Seasonal		-	100,000	-	-
Subtotal		-	\$100,000	-	-
Total Salaries		11.0	\$798,895	11.0	\$698,895
Benefits					
Payroll Accrual			3,879		3,953
Holiday			5,360		-
FICA			60,030		52,180
Retiree Health			45,544		50,702
Health Benefits			135,300		145,811
Retirement			147,251		159,664
Subtotal			\$397,364		\$412,310
Total Salaries and Benefits		11.0	\$1,196,259	11.0	\$1,111,205
Cost Per FTE Position (excluding Statewide Benefit Assessment)			\$108,751		\$101,019
Statewide Benefit Assessment			\$26,210		\$26,210
Payroll Costs		11.0	\$1,222,469	11.0	\$1,137,415
Purchased Services					
Information Technology			-		150,000
Clerical and Temporary Services			9,000		1,000
Legal Services			80,000		20,000
Other Contracts			1,576		788
Buildings and Ground Maintenance			300		-
Subtotal			\$90,876		\$171,788
Total Personnel		11.0	\$1,313,345	11.0	\$1,309,203
Distribution By Source Of Funds					
General Revenue		11.0	\$1,313,345	11.0	\$1,309,203
Total All Funds		11.0	\$1,313,345	11.0	\$1,309,203