

State of Rhode Island and Providence Plantations

# Budget



## Fiscal Year 2014

Volume I – General Government, Quasi-Public  
Agencies and Component Units

Lincoln D. Chafee, Governor

# Agency

---

## Executive Department

---

### Agency Mission

To fulfill all responsibilities and duties in accordance with the Constitution and Laws of the State of Rhode Island.

To monitor all federal legislation and the federal budget for impact upon Rhode Island.

To process legislative and regulatory opportunities for the State of Rhode Island.

To obtain maximum federal funding for the State of Rhode Island.

To initiate reform and change in both government and the economy for the betterment of all Rhode Island Citizens.

### Agency Description

The Office of the Governor is established under the Rhode Island Constitution as one of the general offices and is subject to election by the voters of the State. The Office of the Governor is responsible for the enactment of reform and change in state government for the betterment of the citizens of the State of Rhode Island. In accomplishing this task, the Office of the Governor coordinates the services of a staff of professionals to include the Executive Counsel Office, Business Administrative Services, Policy Office, Legislative Affairs Office, Media Office, Constituent Affairs Office, and Community Relations Office. The functions of the Office of the Health Benefits Exchange, formerly in the Governor's office, have now been moved to the Department of Administration.

### Statutory History

The Governor is the head of the Executive Branch of State government. Among the powers and duties of the Governor under the State Constitution are: faithfully executing the laws (Art IX, Section 2); commanding the state's military and naval forces (Article IX, Section 3); granting reprieves (Articles IX, Section 2); and pardons (Article IX, Section 13); convening special sessions of the general assembly (Article IX, Section 7); and; preparing and presenting to the general assembly an annual state budget (Article IX, Section 15). Each Administration creates its own Office of the Governor for the purpose of governing the State of Rhode Island. The Governor signed Executive Order 11-09 in September, 2011 establishing the Health Benefits Exchange within the Office of the Governor in response to the federal Affordable Care Act 1311 (d)(6). The functions of the exchange has been transferred to the Department of Administration.

The administration of Governor Lincoln D. Chafee began on January 4, 2011.

# Budget

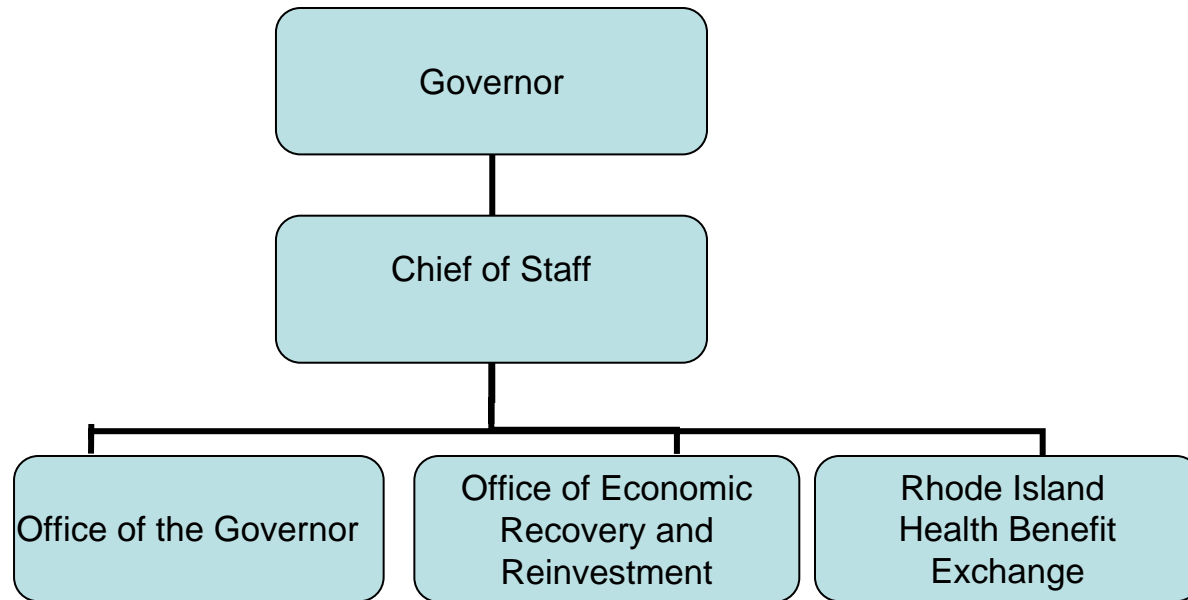
## Executive Department

	FY 2011 Audited	FY 2012 Audited	FY 2013 Enacted	FY 2013 Revised	FY 2014 Recommend
<b>Expenditures By Program</b>					
Central Management	4,102,488	4,081,232	4,418,290	4,400,907	4,493,513
Office of Economic Recovery and Reinvestment	599,379	567,123	-	-	-
Rhode Island Health Benefits Exchange	-	-	22,163,245	-	-
<b>Total Expenditures</b>	<b>\$4,701,867</b>	<b>\$4,648,355</b>	<b>\$26,581,535</b>	<b>\$4,400,907</b>	<b>\$4,493,513</b>
<b>Expenditures By Object</b>					
Personnel	4,393,205	4,210,583	25,611,586	3,876,057	3,985,298
Operating Supplies and Expenses	275,803	274,564	629,828	260,850	234,215
Assistance and Grants	1,370	-	250,000	250,000	250,000
<b>Subtotal: Operating Expenditures</b>	<b>4,670,378</b>	<b>4,485,147</b>	<b>26,491,414</b>	<b>4,386,907</b>	<b>4,469,513</b>
Capital Purchases and Equipment	31,489	32,564	90,121	14,000	24,000
Operating Transfers	-	130,644	-	-	-
<b>Total Expenditures</b>	<b>\$4,701,867</b>	<b>\$4,648,355</b>	<b>\$26,581,535</b>	<b>\$4,400,907</b>	<b>\$4,493,513</b>
<b>Expenditures By Funds</b>					
General Revenue	4,102,488	4,081,232	4,418,290	4,400,907	4,493,513
Federal Funds	40,411	(1)	22,163,245	-	-
Restricted Receipts	558,968	567,124	-	-	-
<b>Total Expenditures</b>	<b>\$4,701,867</b>	<b>\$4,648,355</b>	<b>\$26,581,535</b>	<b>\$4,400,907</b>	<b>\$4,493,513</b>
<b>FTE Authorization</b>	<b>45.0</b>	<b>45.0</b>	<b>45.0</b>	<b>45.0</b>	<b>45.0</b>

# The Agency

Executive Department

---



# Personnel

## Executive Department Central Management

	Grade	FY 2013		FY 2014	
		FTE	Cost	FTE	Cost
<b>Unclassified</b>					
CHIEF OF STAFF (GOVERNOR'S OFFICE)	08355A	1.0	188,044	1.0	194,129
DEPUTY CHIEF OF STAFF (GOVERNOR'S OFFICE)	08353A	1.0	162,595	1.0	165,607
SENIOR ADVISER TO THE GOVERNOR	08353A	1.0	159,797	1.0	165,392
EXECUTIVE COUNSEL	00039A	1.0	140,747	1.0	145,673
GOVERNOR	00527F	1.0	128,715	1.0	128,715
DIRECTOR OF POLICY (GOV OFF)	08344A	1.0	113,377	1.0	118,079
EXECUTIVE ASSISTANT TO THE GOVERNOR	08340A	1.0	96,618	1.0	101,091
DIRECTOR OF COMMUNICATIONS (GOV'S OFFICE)	08340A	1.0	94,380	1.0	100,231
ADMINISTRATIVE ASSISTANT	07760F	0.4	36,547	0.4	36,547
FISCAL ANALYST I	07772F	1.0	87,667	1.0	89,044
DEPUTY DIRECTOR OF POLICY & LEGISLATIVE	08336A	1.0	79,935	1.0	82,858
SCHEDULER (GOVERNOR'S OFFICE)	08335A	1.0	79,772	1.0	82,087
PRINCIPAL PROJECTS MANAGER	00831A	2.0	143,191	1.0	89,787
ASSISTANT TO THE GOVERNOR FOR SPECIAL	08341A	2.0	152,758	2.0	157,234
ADMINISTRATIVE SECRETARY	00825A	1.0	68,031	1.0	69,810
ASSISTANT TO GOVERNOR II (GOV'S OFFICE)	08329A	1.0	65,634	-	-
SENIOR POLICY ANALYST	07804F	1.0	62,627	1.0	62,627
COMMUNICATION ANALYST (GOVERNOR'S OFFICE)	08324A	1.0	61,261	1.0	63,500
STAFF ASSISTANT (GOV'S OFFICE)	08323A	0.6	33,418	0.6	48,819
POLICY AND LEGISLATIVE ANALYST (GOVERNOR'S	08324A	6.0	309,118	6.0	309,118
CONSTITUENT SERVICES ASSOCIATE II (GOV'S	08324A	3.0	122,167	3.0	122,167
DIRECTOR OF CONSTITUENT AFFAIRS	08324A	1.0	49,435	1.0	51,074
RECEPTIONIST/GREETER (GOVERNOR'S OFFICE)	08324A	1.0	49,435	1.0	51,074
POLICY RESEARCHER	00820A	2.0	76,464	3.0	117,174
CONSTITUENT SERVICES ASSOCIATE II	08315A	2.0	73,470	1.0	36,735
COMMUNICATIONS ASSOC II(GOV OF	08315A	4.0	145,754	4.0	146,888
LEGISLATIVE COORDINATOR	00937F	1.0	34,236	2.0	96,710
CONSTITUENT SERVICES ASSOCIATE	08301A	2.0	62,406	3.0	89,808
PROJECT COORDINATOR	00822A	3.0	86,637	3.0	86,637
<b>Subtotal</b>		<b>45.0</b>	<b>\$2,964,236</b>	<b>45.0</b>	<b>\$3,008,615</b>
Temporary and Seasonal		-	36,400	-	36,400
Turnover		-	(512,515)	-	(521,979)
<b>Subtotal</b>		<b>-</b>	<b>(\$476,115)</b>	<b>-</b>	<b>(\$485,579)</b>
<b>Total Salaries</b>		<b>45.0</b>	<b>\$2,488,121</b>	<b>45.0</b>	<b>\$2,523,036</b>
<b>Benefits</b>					
Payroll Accrual			9,540		9,627
FICA			191,158		193,749
Retiree Health			168,721		167,669
Health Benefits			379,316		396,555
Retirement			546,161		600,352
<b>Subtotal</b>			<b>\$1,294,896</b>		<b>\$1,367,952</b>

# Personnel

## Executive Department Central Management

	Grade	FY 2013		FY 2014	
		FTE	Cost	FTE	Cost
<b>Total Salaries and Benefits</b>		45.0	\$3,783,017	45.0	\$3,890,988
<b>Cost Per FTE Position (excluding Statewide Benefit Assessment)</b>			\$84,067		\$86,466
<b>Statewide Benefit Assessment</b>			\$92,340		\$93,610
<b>Payroll Costs</b>		45.0	\$3,875,357	45.0	\$3,984,598
<b>Purchased Services</b>					
Other Contracts			400		400
Buildings and Ground Maintenance			300		300
<b>Subtotal</b>			\$700		\$700
<b>Total Personnel</b>		45.0	\$3,876,057	45.0	\$3,985,298
<b>Distribution By Source Of Funds</b>					
General Revenue		45.0	\$3,876,057	45.0	\$3,985,298
<b>Total All Funds</b>		45.0	\$3,876,057	45.0	\$3,985,298

# The Program

---

Executive Department

Office of Economic Recovery and Reinvestment

---

## **Program Mission**

The OERR is charged with the following tasks: To collect and review of all OERR project data for the entire state. To establish processes for identifying, evaluating, tracking, and auditing of infrastructure improvement projects and other initiatives required by the ARRA or other economic stimulus legislation.

To present recommendations to the Governor for certification and approval of all infrastructure improvement projects and other related projects connected to ARRA. To be responsible for transparency, tracking and accounting for funds associated with ARRA and other federal or state economic stimulus legislation, as well as filing necessary reports and information to the federal government and the General Assembly.

## **Program Description**

On February 10, 2009, the Governor issued Executive Order 09-04, which established the Rhode Island Office of Economic Recovery and Reinvestment (OERR) within the Office of the Governor. The OERR is responsible for administering and complying with the American Recovery and Reinvestment Act of 2009 (ARRA), and other state and federal economic stimulus legislation. As most of the ARRA projects are now complete this office will no longer be needed in its current capacity. Instead the remaining functions of this office will be administered by the Department of Administration within the Office of Management and Budget.

## **Statutory History**

Executive Order 09-04

# The Budget

---

## Executive Department Office of Economic Recovery and Reinvestment

---

	2011 Audited	2012 Audited	2013 Enacted	2013 Revised	2014 Recommend
<b>Expenditures By Subprogram</b>					
Economic Recovery and Reinvest	599,379	567,123	-	-	-
<b>Total Expenditures</b>	<b>\$599,379</b>	<b>\$567,123</b>	-	-	-
<b>Expenditures By Object</b>					
Personnel	592,276	430,049	-	-	-
Operating Supplies and Expenses	4,089	6,430	-	-	-
<b>Subtotal: Operating Expenditures</b>	<b>596,365</b>	<b>436,479</b>	-	-	-
Capital Purchases and Equipment	3,014	-	-	-	-
Operating Transfers	-	130,644	-	-	-
<b>Total Expenditures</b>	<b>\$599,379</b>	<b>\$567,123</b>	-	-	-
<b>Expenditures By Funds</b>					
Federal Funds	40,411	(1)	-	-	-
Restricted Receipts	558,968	567,124	-	-	-
<b>Total Expenditures</b>	<b>\$599,379</b>	<b>\$567,123</b>	-	-	-



# The Program

---

Executive Department

Rhode Island Health Benefits Exchange

---

## Program Mission

To serve as a resource for Rhode Islanders and Rhode Island businesses, to educate them about and easily compare the quality and affordability of their health insurance options, enroll in coverage and, if eligible, access subsidies for coverage.

## Program Description

The Rhode Island Health Benefits Exchange seeks to improve the health of Rhode Islanders by assisting those eligible to receive federal subsidies to purchase insurance and assist small businesses to qualify for available tax credits. The Exchange will also negotiate pricing and benefits of insurance plans and monitor quality and outcomes on behalf of small employers and individuals. The Exchange will establish a web-based hub for insurance information and services where all Rhode Islanders can find information about health care providers and the quality of their services, as well as other state services and other health programs, such as health insurance for young families or help for senior citizens. This program has been moved to the Department of Administration as of Fiscal 2013.

## Statutory History

The Patient Protection and Affordable Care Act (Pub. Law 111-148) (the "ACA") provides for the establishment of a Health Benefits Exchange by each State. Executive Order 11-09, signed by Governor Chafee on September 19, 2011, designates the Executive Department to administer the Fund and creates a division within the Executive Department known as the Rhode Island Health Benefits Exchange ("RIHBE") to administer the Fund. Executive Order 11-09 requires the RIHBE, at a minimum, to carry out the functions and responsibilities to create a Health Benefits Exchange pursuant section 1311 of the ACA. Executive Order 11-09 stipulates that the Fund, consistent with R.I.G.L. 42-62-17, shall receive funds from insurers or other entities, including the federal department of Health and Human Services ("HHS"). Executive Order 11-09 further stipulates that no state general revenues shall be used for the purposes of the RIHBE and no liability incurred by the RIHBE or any of its employees may be satisfied using state general revenues. R.I.G.L. 42-62-16 creates the health resources development fund (the "Fund") to be administered by the Director of the Department of Health for the purposes of, inter alia, benefits for persons lacking adequate insured coverage, and the development and implementation of experiments in lower costs or to improve the quality, availability, and accessibility of health services. R.I.G.L. 42-62-17 authorizes the Director of Health to expend moneys from the Fund appropriated by the general assembly or received from insurers or other entities. R.I.G.L. 42-62-18 authorizes the Governor to designate a different department as having responsibility for the implementation of specific duties under 62 of Title 42.

# The Budget

---

## Executive Department Rhode Island Health Benefits Exchange

---

	2011 Audited	2012 Audited	2013 Enacted	2013 Revised	2014 Recommend
<b>Expenditures By Subprogram</b>					
Health Benefits Exchange	-	-	22,163,245	-	-
<b>Total Expenditures</b>	-	-	<b>\$22,163,245</b>	-	-
<b>Expenditures By Object</b>					
Personnel	-	-	21,722,665	-	-
Operating Supplies and Expenses	-	-	370,527	-	-
<b>Subtotal: Operating Expenditures</b>	-	-	<b>22,093,192</b>	-	-
Capital Purchases and Equipment	-	-	70,053	-	-
<b>Total Expenditures</b>	-	-	<b>\$22,163,245</b>	-	-
<b>Expenditures By Funds</b>					
Federal Funds	-	-	22,163,245	-	-
<b>Total Expenditures</b>	-	-	<b>\$22,163,245</b>	-	-

# Personnel

## Executive Department

### Rhode Island Health Benefits Exchange

	Grade	FY 2013		FY 2014	
		FTE	Cost	FTE	Cost
<b>Unclassified</b>					
HEALTH EXCHANGE DIR (GOV OFF)	00901F	1.0	182,619	1.0	182,619
DEPUTY DIRECTOR	00832A	1.0	151,525	1.0	151,525
EXECUTIVE COUNSEL	00039A	1.0	88,177	-	-
SENIOR POLICY ANALYST	07804F	1.0	62,688	-	-
ADMINISTRATIVE ASSISTANT	00813A	1.0	46,394	-	-
ASSISTANT DIRECTOR		1.0	97,162	-	-
CHIEF STRATEGIC PLANNING		3.0	340,922	3.0	345,414
<b>Subtotal</b>		<b>9.0</b>	<b>\$969,487</b>	<b>5.0</b>	<b>\$679,558</b>
Interdepartmental Transfer		(9.0)	(969,487)	(5.0)	(679,558)
<b>Subtotal</b>		<b>(9.0)</b>	<b>(\$969,487)</b>	<b>(5.0)</b>	<b>(\$679,558)</b>
<b>Total Salaries</b>		-	-	-	-
<b>Total Salaries and Benefits</b>		-	-	-	-
<b>Cost Per FTE Position (excluding Statewide Benefit Assessment)</b>					
<b>Statewide Benefit Assessment</b>			-		-
<b>Payroll Costs</b>		-	-	-	-
<b>Total Personnel</b>		-	-	-	-
<b>Distribution By Source Of Funds</b>					
Federal Funds		-	-	-	-
<b>Total All Funds</b>		-	-	-	-