

State of Rhode Island and Providence Plantations

Budget



Fiscal Year 2014

Volume II – Human Services

Lincoln D. Chafee, Governor

Agency

Office Of The Child Advocate

Agency Mission

To monitor the Department of Children, Youth and Families to ensure that it offers children in its care adequate protection and quality services, while affording these children respect for their individual rights and dignity. These activities include, but are not limited to, public education, legislative advocacy, investigation, and litigation.

To review and make recommendations regarding the Department of Children, Youth and Families procedures; to investigate institutional abuse allegations and child fatalities; to provide information and referral on matters relating to children; participate in voluntary admissions procedures; to monitor child placements; to conduct annual site visits at residential/group care programs; and to review the Department of Children, Youth and Families' compliance with day-care licensing laws.

Agency Description

The Office of the Child Advocate is charged with fulfilling a statutory mandate to protect the legal, civil and special rights of all children and youth involved in the care of the Department of Children, Youth, and Families (DCYF). In so doing, the Office strives to improve conditions and circumstances through monitoring, compliance, and advocacy.

The office is staffed with 5.8 authorized full-time equivalent (FTE) positions. The office is responsible for oversight of children under DCYF care and yearly monitoring site visits to monitor their care at group homes and residential programs in the state. The office also provides direct legal representation for a portion of children voluntarily placed in state care.

The office reviews and monitors systematic and individual issues related to residents at the Rhode Island Training School. It provides direct oversight and on-site visits on a weekly basis. The Office of the Child Advocate also files Victim Compensation claims for children who have been physically and/or sexually assaulted and are in the care of the State.

Statutory History

In 1980, the General Assembly created the Office of the Child Advocate. Its powers and duties are codified in R.I.G.L. 42-73. The office of the Child Advocate possesses a statutory right of access, including subpoena power, to all providers, the Family Court, Department of Children, Youth and Families, and law enforcement records. There is also a right of physical access to all child-care programs and children in care.

In 1992, the office of the Child Advocate's responsibilities with respect to children in state care were statutorily expanded to include review of child fatality cases and representation of child victims of crime pursuant to the Criminal Injuries Compensation Act.

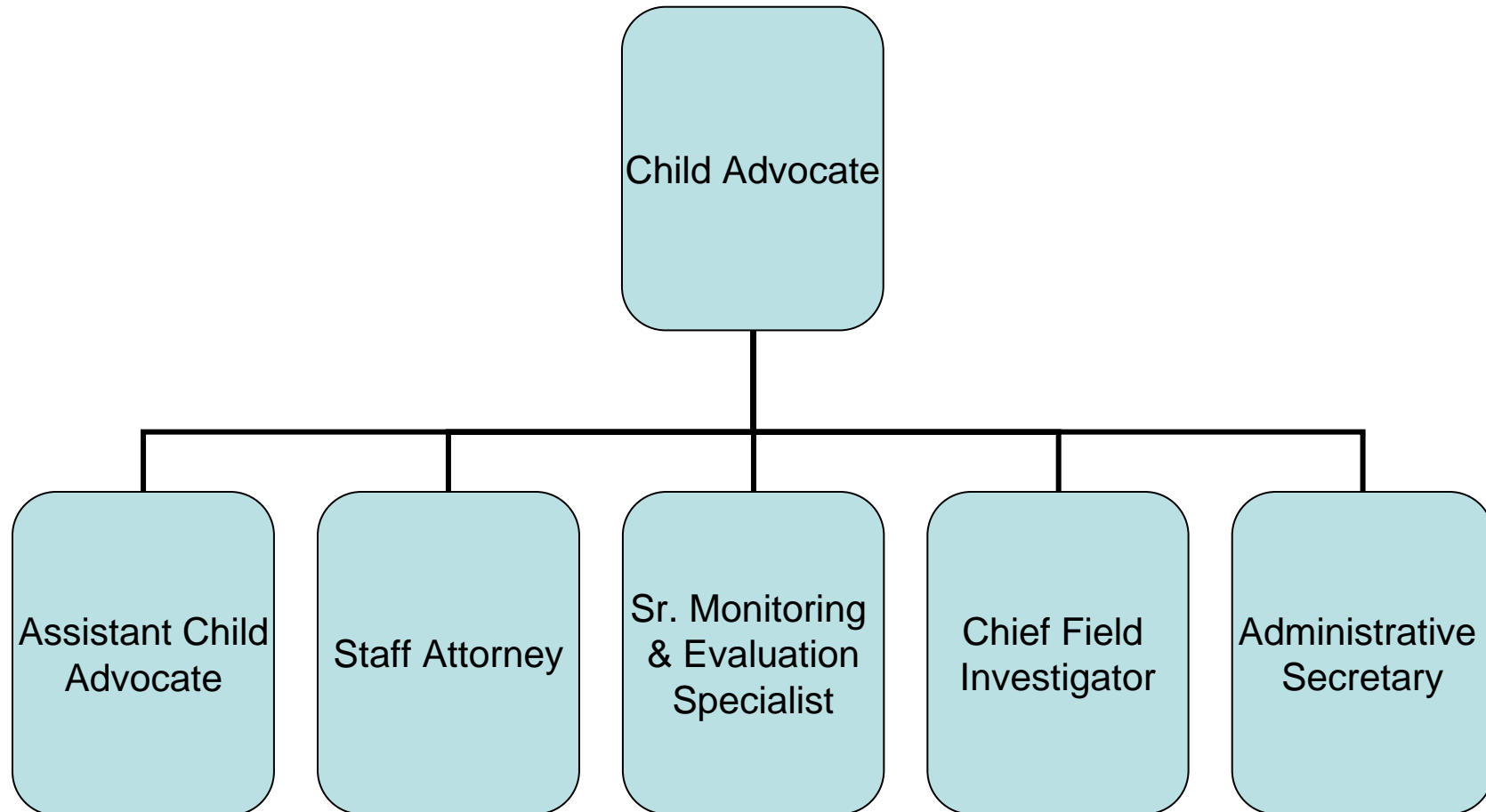
The Budget

Office Of The Child Advocate Central Management

	2011 Audited	2012 Audited	2013 Enacted	2013 Revised	2014 Recommend
Expenditures By Subprogram					
Operations	597,596	558,884	657,572	636,732	655,148
Total Expenditures	\$597,596	\$558,884	\$657,572	\$636,732	\$655,148
Expenditures By Object					
Personnel	585,520	543,401	641,545	618,809	637,096
Operating Supplies and Expenses	12,076	10,198	15,027	15,923	17,052
Subtotal: Operating Expenditures	597,596	553,599	656,572	634,732	654,148
Capital Purchases and Equipment	-	5,285	1,000	2,000	1,000
Total Expenditures	\$597,596	\$558,884	\$657,572	\$636,732	\$655,148
Expenditures By Funds					
General Revenue	550,911	512,165	611,469	590,664	615,151
Federal Funds	46,685	46,719	46,103	46,068	39,997
Total Expenditures	\$597,596	\$558,884	\$657,572	\$636,732	\$655,148

The Agency

Office of the Child Advocate



Personnel

Office Of The Child Advocate Central Management

	Grade	FY 2013		FY 2014	
		FTE	Cost	FTE	Cost
Unclassified					
CHILD ADVOCATE	00862F	1.0	106,935	1.0	106,935
STAFF ATTORNEY III	00832A	0.8	69,089	0.8	69,612
ASSISTANT CHILD ADVOCATE	00834A	1.0	76,408	1.0	79,199
SR. MONITORING & EVAL. SPECIALIST	00325A	1.0	54,819	1.0	55,750
CHIEF FIELD INVESTIGATOR (CHILD ADVOCATE)	00320A	1.0	48,544	1.0	48,544
ADMINISTRATIVE SECRETARY	00318A	1.0	45,264	1.0	45,264
Subtotal		5.8	\$401,059	5.8	\$405,304
Turnover		-	(11,556)	-	(16,019)
Subtotal		-	(\$11,556)	-	(\$16,019)
Total Salaries		5.8	\$389,503	5.8	\$389,285
Benefits					
Payroll Accrual			2,188		2,230
FICA			29,802		29,783
Retiree Health			26,724		29,734
Health Benefits			69,083		77,333
Retirement			86,401		93,632
Subtotal			\$214,198		\$232,712
Total Salaries and Benefits		5.8	\$603,701	5.8	\$621,997
Cost Per FTE Position (excluding Statewide Benefit Assessment)			\$104,086		\$107,241
Statewide Benefit Assessment			\$14,608		\$14,599
Payroll Costs		5.8	\$618,309	5.8	\$636,596
Purchased Services					
Clerical and Temporary Services			500		500
Subtotal			\$500		\$500
Total Personnel		5.8	\$618,809	5.8	\$637,096
Distribution By Source Of Funds					
General Revenue		5.8	\$573,028	5.8	\$597,483
Federal Funds		-	\$45,781	-	\$39,613
Total All Funds		5.8	\$618,809	5.8	\$637,096

Performance Measures

Office Of The Child Advocate Central Management

Residential Care Facilities Site Reviews

Facilities site reviews ensure the appropriateness of the physical living conditions and appropriateness of clinical treatment programs being provided to the population of children in a particular placement licensed by the Department for Children, Youth and Families. Site reviews include, but are not limited to, compliance with residential care regulations. Rhode Island currently has 76 residential care sites to review. The figures below represent the percentage of residential care facilities that received a review. [Performance data and targets are provided by State fiscal year. The 2013 Actual figure represents performance data from the first four months of FY 2013 (7/1/12 through 10/31/12).]

	2011	2012	2013	2014
Target	N/A	N/A	85.0%	90.0%
Actual	N/A	N/A	13.2%	--