

State of Rhode Island and Providence Plantations

# Budget



## Fiscal Year 2014

Volume II – Human Services

Lincoln D. Chafee, Governor

# Agency

---

## Office Of The Mental Health Advocate

---

### Agency Mission

To ensure the legal, civil, and special rights of people with mental illness in Rhode Island.

To protect the liberty interests and treatment rights of individuals subjected to involuntary commitment and to the involuntary administration of medication in psychiatric facilities, including penal inmates.

To protect the legal rights of clients of the mental health system by means of direct legal representation and/or referral to appropriate resources.

To monitor and evaluate the quality of services available to clients of the mental health system, and to investigate incidents. To address shortcomings and gaps in the services and programs administered by the mental health providers.

To address stigmatizing legal inequities and social barriers that impact upon the lives of individuals with mental illness by means of legislative advocacy, litigation, education, support for the mental health consumer movement, and by outreach to the public at large.

### Agency Description

The Office of the Mental Health Advocate accomplishes its mission by providing legal representation at involuntary commitment proceedings, monitoring procedures and policies at in-patient treatment facilities and community-based mental health programs, proposing and evaluating legislation, and litigating civil rights and treatment rights disputes. The Office also provides counsel to clients of the mental health system who bring complaints involving mental health issues and other issues vital to maintaining quality of life, such as housing and protection from creditors. The Office is also charged to protect the treatment rights of criminally insane persons and prison inmates in the forensic hospital (patients who are under criminal process) and to provide legal representation for indigent persons receiving in-patient substance abuse treatment.

### Statutory History

The Office of the Mental Health Advocate was created in 1975 when the legislature re-wrote and reformed the Mental Health Law of Rhode Island. This reform was part of a national movement toward deinstitutionalization of mentally ill individuals, a movement which began in the 1950's and became a centerpiece of public policy in the 1970's after the United States Supreme Court declared that all states must provide Constitutional Due Process and legal counsel to individuals subjected to involuntary hospitalization. The original statute authorizing the Mental Health Advocate is codified at RI General Laws, Sections 40.1-5-13, 40.1-5-22 and 24 (Public Laws 1974, Ch. 119).

# The Budget

---

## Office Of The Mental Health Advocate Central Management

---

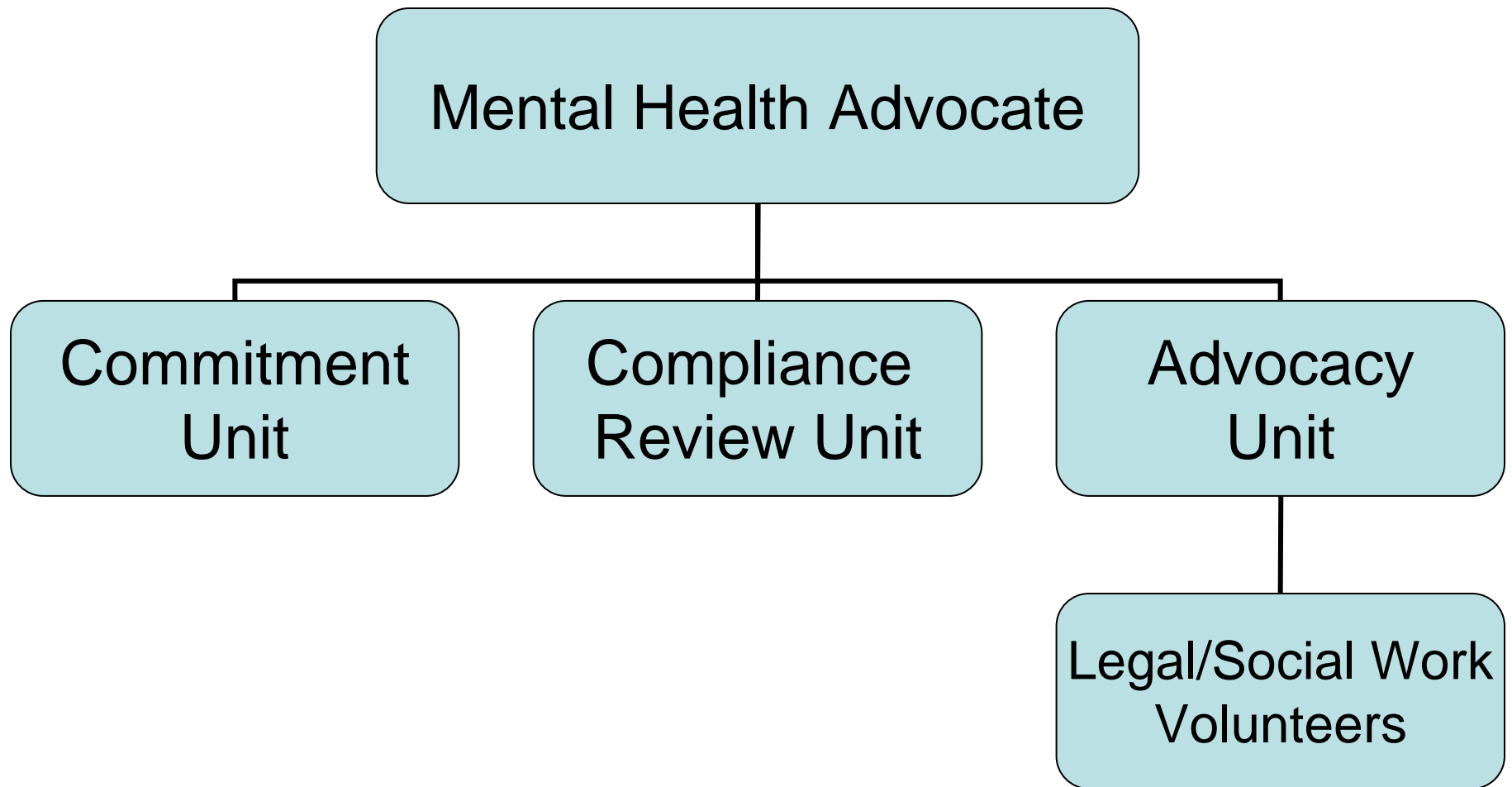
	2011 Audited	2012 Audited	2013 Enacted	2013 Revised	2014 Recommend
<b>Expenditures By Subprogram</b>					
Operations	399,837	387,894	447,119	360,207	486,144
<b>Total Expenditures</b>	<b>\$399,837</b>	<b>\$387,894</b>	<b>\$447,119</b>	<b>\$360,207</b>	<b>\$486,144</b>
<b>Expenditures By Object</b>					
Personnel	388,169	369,047	436,039	349,711	475,648
Operating Supplies and Expenses	11,668	13,562	11,080	10,496	10,496
<b>Subtotal: Operating Expenditures</b>	<b>399,837</b>	<b>382,609</b>	<b>447,119</b>	<b>360,207</b>	<b>486,144</b>
Capital Purchases and Equipment	-	5,285	-	-	-
<b>Total Expenditures</b>	<b>\$399,837</b>	<b>\$387,894</b>	<b>\$447,119</b>	<b>\$360,207</b>	<b>\$486,144</b>
<b>Expenditures By Funds</b>					
General Revenue	399,837	387,894	447,119	360,207	486,144
<b>Total Expenditures</b>	<b>\$399,837</b>	<b>\$387,894</b>	<b>\$447,119</b>	<b>\$360,207</b>	<b>\$486,144</b>

# The Agency

---

Office of the Mental Health Advocate

---



# Personnel

## Office Of The Mental Health Advocate Central Management

	Grade	FY 2013		FY 2014	
		FTE	Cost	FTE	Cost
<b>Unclassified</b>					
MENTAL HEALTH ADVOCATE	00862F	1.0	100,641	1.0	100,641
STAFF ATTORNEY III	00832A	1.7	125,120	1.7	126,856
ADMINISTRATIVE ASSISTANT	00823A	1.0	56,749	1.0	56,749
<b>Subtotal</b>		<b>3.7</b>	<b>\$282,510</b>	<b>3.7</b>	<b>\$284,246</b>
Turnover		-	(76,907)	-	-
<b>Subtotal</b>		<b>-</b>	<b>(\$76,907)</b>	<b>-</b>	<b>-</b>
<b>Total Salaries</b>		<b>3.7</b>	<b>\$205,603</b>	<b>3.7</b>	<b>\$284,246</b>
<b>Benefits</b>					
Payroll Accrual			1,141		1,629
FICA			15,728		21,744
Retiree Health			14,104		21,708
Health Benefits			45,935		65,500
Retirement			45,690		68,362
<b>Subtotal</b>			<b>\$122,598</b>		<b>\$178,943</b>
<b>Total Salaries and Benefits</b>		<b>3.7</b>	<b>\$328,201</b>	<b>3.7</b>	<b>\$463,189</b>
<b>Cost Per FTE Position (excluding Statewide Benefit Assessment)</b>			<b>\$88,703</b>		<b>\$125,186</b>
<b>Statewide Benefit Assessment</b>			<b>\$7,710</b>		<b>\$10,659</b>
<b>Payroll Costs</b>		<b>3.7</b>	<b>\$335,911</b>	<b>3.7</b>	<b>\$473,848</b>
<b>Purchased Services</b>					
Clerical and Temporary Services			200		200
Legal Services			12,000		-
Other Contracts			100		100
Medical Services			1,500		1,500
<b>Subtotal</b>			<b>\$13,800</b>		<b>\$1,800</b>
<b>Total Personnel</b>		<b>3.7</b>	<b>\$349,711</b>	<b>3.7</b>	<b>\$475,648</b>
<b>Distribution By Source Of Funds</b>					
General Revenue		3.7	\$349,711	3.7	\$475,648
<b>Total All Funds</b>		<b>3.7</b>	<b>\$349,711</b>	<b>3.7</b>	<b>\$475,648</b>