

State of Rhode Island and Providence Plantations

Budget



Fiscal Year 2015

Volume I – General Government, Quasi-Public Agencies and
Component Units

Lincoln D. Chafee, Governor

Dedication

*This year's budget documents are dedicated to the
Memory of William V. Golas, Jr.
Sr. Budget Analyst 1987 - 2013*

The image on the cover of this year's budget document is a Winter Scene of the State House from Artist John Pitocco of Providence and is reproduced by permission of the artist in collaboration with the Rhode Island State Council on the Arts.

Agency

Board Of Elections

Agency Mission

To protect the integrity of the electoral process and to effectively and efficiently administer the provisions of United States and Rhode Island election laws.

Agency Description

The Board of Elections supervises all elections and state and local referenda. The Board supervises the maintenance, preparation and delivery of electronic optical-scan voting equipment, election return forms and other supplies used at each polling place. The Board instructs and certifies all election officials assigned to polls and prepares and distributes poll worker guides and related materials. The Board also appoints, trains and assigns bi-partisan pairs of supervisors for the mail ballot program for institutionally confined persons. The Board certifies the results of all elections under its jurisdiction, including tabulating machine and mail ballot votes cast; conducts recounts; certifies results to the Secretary of State; issues certificates of election to candidates; and provides an official tabulation of returns.

The Board oversees voter registration and public education activities and provides all registration materials used in the State. The Board trains and supervises all individuals who serve as statewide voter registration agents. The agency conducts voter registration drives throughout the State and at each institution of higher education in Rhode Island. It oversees and coordinates the registration of voters at other state agencies and departments as part of the National Voter Registration Act. The Board carries out the mandates of the Rhode Island Campaign Contributions and Expenditures Reporting Act (the "Act"). The agency oversees and monitors the campaign finance activities of candidates, political action committees and state vendors. The Board's responsibilities also include the development, printing and distribution of forms required for candidate, committee and vendor reports as well as the publication of manuals describing and explaining the requirements set forth in the statutes. The Board reviews and makes available for inspection all reports filed, prepares summaries and an annual report, and is authorized to investigate suspected violations of the Act. The agency oversees and administers the public financing of campaigns program for each of the State's five general offices.

Statutory History

Chapter 825 of the Public Laws of 1901 created the "State Returning Board," which was replaced by Chapter 1040 of the Public Laws of 1941 which created the "Board of Elections" as a partisan board. Chapter 312 of the Public Laws of 1979 amended the law to establish the Board of Elections as a non-partisan board. R.I.G.L. 17-7 sets forth its duties and powers. R.I.G.L. 17-25 sets out the mandates of the Rhode Island Campaign Contributions and Expenditure Reporting Act (public financing of campaigns). R.I.G.L. 42-6 provides for the registration of voters at other state agencies. R.I.G.L. 17-27 provides for reporting requirements and monitoring of political contributions by state vendors. R.I.G.L. 17-19 provides for the use of an optical scan precinct count voting system in state elections.

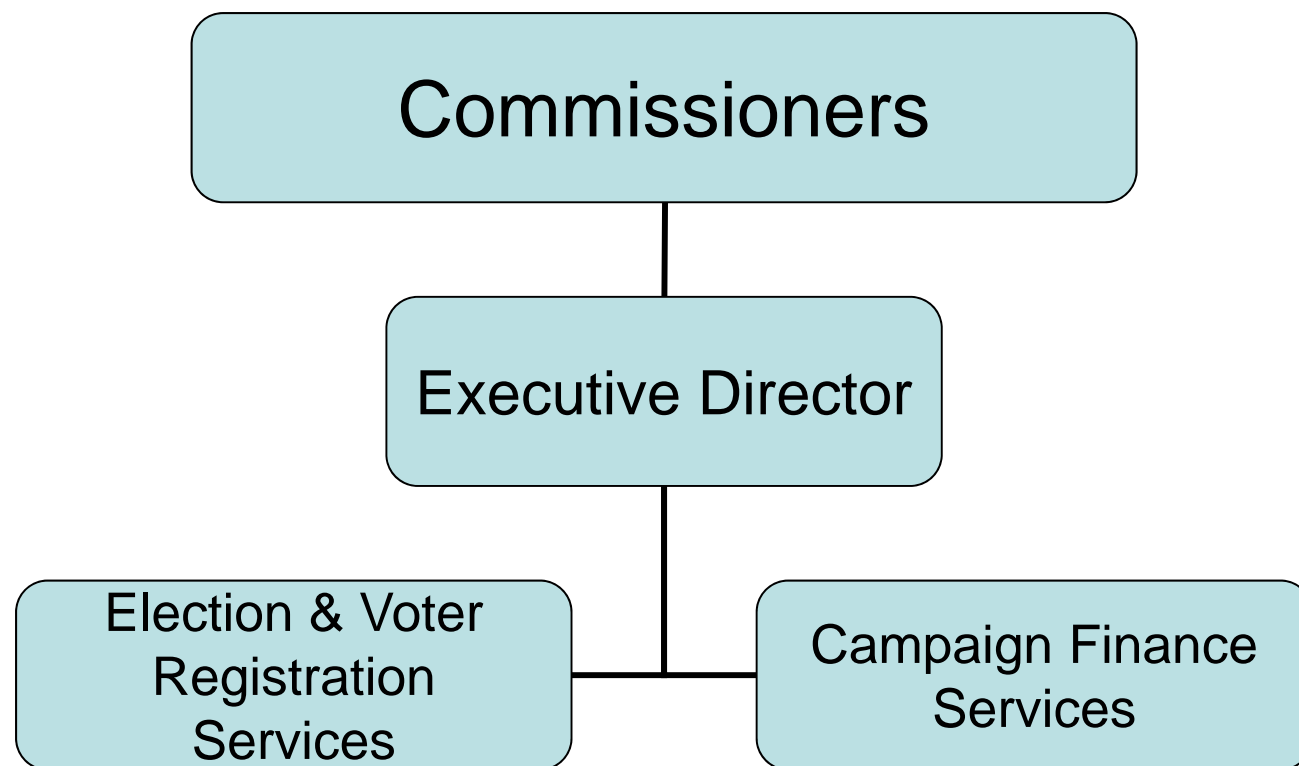
The Budget

Board Of Elections Central Management

	2012 Audited	2013 Audited	2014 Enacted	2014 Revised	2015 Recommend
Expenditures By Subprogram					
Operations	1,660,728	1,846,513	1,739,361	1,760,405	4,145,127
Total Expenditures	\$1,660,728	\$1,846,513	\$1,739,361	\$1,760,405	\$4,145,127
Expenditures By Object					
Personnel	1,439,954	1,565,625	1,309,203	1,319,246	1,380,078
Operating Supplies and Expenses	178,084	280,888	430,158	441,159	657,109
Assistance and Grants	4,130	-	-	-	2,000,000
Subtotal: Operating Expenditures	1,622,168	1,846,513	1,739,361	1,760,405	4,037,187
Capital Purchases and Equipment	38,560	-	-	-	107,940
Total Expenditures	\$1,660,728	\$1,846,513	\$1,739,361	\$1,760,405	\$4,145,127
Expenditures By Funds					
General Revenue	1,610,728	1,846,488	1,739,361	1,760,405	4,145,127
Federal Funds	50,000	25	-	-	-
Total Expenditures	\$1,660,728	\$1,846,513	\$1,739,361	\$1,760,405	\$4,145,127

The Agency

Board of Elections



Personnel

Board Of Elections Central Management

	Grade	FY 2014		FY 2015	
		FTE	Cost	FTE	Cost
Unclassified					
EXECUTIVE DIRECTOR	00844A	1.0	137,574	1.0	137,574
PRINCIPAL PROJECTS MANAGER	00831A	1.0	82,130	1.0	82,130
SUPERVISING ACCOUNTANT	00831A	1.0	74,770	1.0	74,770
SENIOR ADMINISTRATIVE AIDE/TRAINING	00319A	1.0	52,292	1.0	52,292
PLANNING AND PROGRAM DEVELOPMENT	00320A	4.0	198,413	4.0	198,413
CONFIDENTIAL SECRETARY	00817A	1.0	43,873	1.0	43,873
SENIOR RECEPTIONIST	00312A	1.0	38,334	1.0	38,334
ADMINISTRATIVE ASSISTANT	00312A	1.0	36,509	1.0	36,509
COMMISSIONER-BOARD OF ELECTIONS	00510F	-	35,000	-	42,000
Subtotal		11.0	\$698,895	11.0	\$705,895
Temporary and Seasonal		-	-	-	160,000
Subtotal		-	-	-	\$160,000
Total Salaries		11.0	\$698,895	11.0	\$865,895
Benefits					
Payroll Accrual			3,948		3,980
FICA			51,970		52,716
Retiree Health			46,937		44,814
Health Benefits			136,638		147,656
Retirement			159,664		161,525
Subtotal			\$399,157		\$410,691
Total Salaries and Benefits		11.0	\$1,098,052	11.0	\$1,276,586
Cost Per FTE Position (Excluding Temporary and Seasonal)			\$99,823		\$101,508
Statewide Benefit Assessment			\$29,706		\$30,004
Payroll Costs		11.0	\$1,127,758	11.0	\$1,306,590
Purchased Services					
Information Technology			150,000		12,000
Clerical and Temporary Services			700		700
Legal Services			40,000		60,000
Other Contracts			788		788
Subtotal			\$191,488		\$73,488
Total Personnel		11.0	\$1,319,246	11.0	\$1,380,078
Distribution By Source Of Funds					
General Revenue		11.0	\$1,319,246	11.0	\$1,380,078
Total All Funds		11.0	\$1,319,246	11.0	\$1,380,078