

State of Rhode Island and Providence Plantations

Budget



Fiscal Year 2015

Volume II – Health and Human Services

Lincoln D. Chafee, Governor

Dedication

*This year's budget documents are dedicated to the
Memory of William V. Golas, Jr.
Sr. Budget Analyst 1987 - 2013*

The image on the cover of this year's budget document is a Winter Scene of the State House from Artist John Pitocco of Providence and is reproduced by permission of the artist in collaboration with the Rhode Island State Council on the Arts.

Agency

Office Of The Child Advocate

Agency Mission

To monitor the Department of Children, Youth and Families to ensure that it offers children in its care adequate protection and quality services, while affording these children respect for their individual rights and dignity. These activities include, but are not limited to, public education, legislative advocacy, investigation, and litigation.

To review and make recommendations regarding the Department of Children, Youth and Families procedures; to investigate institutional abuse allegations and child fatalities; to provide information and referral on matters relating to children; participate in voluntary admissions procedures; to monitor child placements; to conduct annual site visits at residential/group care programs; and to review the Department of Children, Youth and Families' compliance with day-care licensing laws.

Agency Description

The Office of the Child Advocate is charged with fulfilling a statutory mandate to protect the legal, civil and special rights of all children and youth involved in the care of the Department of Children, Youth, and Families (DCYF). In so doing, the Office strives to improve conditions and circumstances through monitoring, compliance, and advocacy.

The office is staffed with 6.0 authorized full-time equivalent (FTE) positions. The office is responsible for oversight of children under DCYF care and yearly monitoring site visits to monitor their care at group homes and residential programs in the state. The office also provides direct legal representation for a portion of children voluntarily placed in state care.

The office reviews and monitors systematic and individual issues related to residents at the Rhode Island Training School. It provides direct oversight and on-site visits on a weekly basis. The Office of the Child Advocate also files Victim Compensation claims for children who have been physically and/or sexually assaulted and are in the care of the State.

Statutory History

In 1980, the General Assembly created the Office of the Child Advocate. Its powers and duties are codified in R.I.G.L. 42-73. The Office of the Child Advocate possesses a statutory right of access, including subpoena power, to all providers, the Family Court, Department of Children, Youth and Families, and law enforcement records. There is also a right of physical access to all child-care programs and children in care.

In 1992, the Office of the Child Advocate's responsibilities with respect to children in state care were statutorily expanded to include review of child fatality cases and representation of child victims of crime pursuant to the Criminal Injuries Compensation Act.

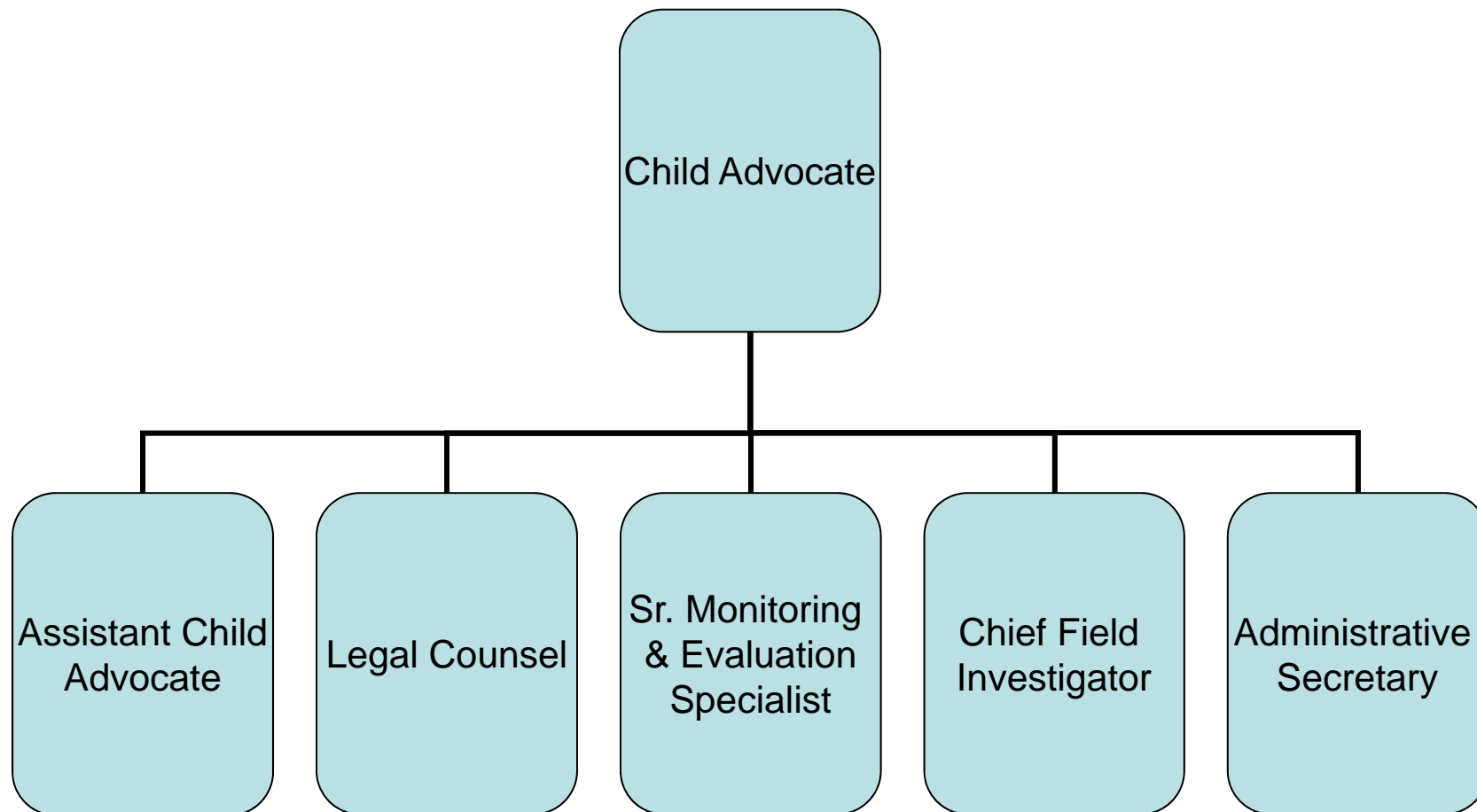
The Budget

Office Of The Child Advocate Central Management

	2012 Audited	2013 Audited	2014 Enacted	2014 Revised	2015 Recommend
Expenditures By Subprogram					
Operations	558,884	610,133	648,648	625,477	661,817
Total Expenditures	\$558,884	\$610,133	\$648,648	\$625,477	\$661,817
Expenditures By Object					
Personnel	543,401	592,547	630,596	606,046	642,386
Operating Supplies and Expenses	10,198	15,969	17,052	18,431	18,431
Subtotal: Operating Expenditures	553,599	608,516	647,648	624,477	660,817
Capital Purchases and Equipment	5,285	1,617	1,000	1,000	1,000
Total Expenditures	\$558,884	\$610,133	\$648,648	\$625,477	\$661,817
Expenditures By Funds					
General Revenue	512,165	578,085	608,651	575,477	611,817
Federal Funds	46,719	32,048	39,997	50,000	50,000
Total Expenditures	\$558,884	\$610,133	\$648,648	\$625,477	\$661,817

The Agency

Office of the Child Advocate



Personnel

Office Of The Child Advocate Central Management

	Grade	FY 2014		FY 2015	
		FTE	Cost	FTE	Cost
Unclassified					
CHILD ADVOCATE	00862F	1.0	106,935	1.0	106,935
ASSISTANT CHILD ADVOCATE	00834A	1.0	79,199	1.0	83,541
SENIOR MONITORING AND EVALUATION	00325A	1.0	54,517	1.0	56,431
LEGAL COUNSEL	00826A	1.0	58,557	1.0	58,557
ADMINISTRATIVE SECRETARY	00318A	1.0	46,954	1.0	46,954
CHIEF FIELD INVESTIGATOR (CHILD ADVOCATE)	00320A	1.0	41,040	1.0	42,179
Subtotal		6.0	\$387,202	6.0	\$394,597
Turnover		-	(11,151)	-	-
Subtotal		-	(\$11,151)	-	-
Total Salaries		6.0	\$376,051	6.0	\$394,597
Benefits					
Payroll Accrual			2,152		2,258
FICA			28,767		30,188
Retiree Health			26,586		26,635
Health Benefits			65,566		75,433
Retirement			90,440		96,004
Subtotal			\$213,511		\$230,518
Total Salaries and Benefits		6.0	\$589,562	6.0	\$625,115
Cost Per FTE Position (Excluding Temporary and Seasonal)			\$98,260		\$104,186
Statewide Benefit Assessment			\$15,984		\$16,771
Payroll Costs		6.0	\$605,546	6.0	\$641,886
Purchased Services					
Clerical and Temporary Services			500		500
Subtotal			\$500		\$500
Total Personnel		6.0	\$606,046	6.0	\$642,386
Distribution By Source Of Funds					
General Revenue		5.4	\$556,087	5.4	\$592,427
Federal Funds		0.6	\$49,959	0.6	\$49,959
Total All Funds		6.0	\$606,046	6.0	\$642,386

Performance Measures

Office Of The Child Advocate Central Management

Residential Care Facilities - Site Reviews

Facility reviews ensure the appropriateness of the physical living conditions and suitability of clinical treatment programs provided to the children in a particular placement licensed by the Department for Children, Youth and Families. Site reviews include, but are not limited to, compliance with residential care regulations. Rhode Island currently has 76 residential care sites to review. The figures below represent the percentage of residential care facilities that received a review in a given year.

	2011	2012	2013	2014	2015
Target	--	--	85%	90%	95%
Actual	--	--	100%	0%	--

Performance for this measure is reported by state fiscal year and is current as of 9/30/2013.
