

State of Rhode Island and Providence Plantations

Budget



Fiscal Year 2015

Volume IV – Public Safety, Natural Resources
and Transportation

Lincoln D. Chafee, Governor

Dedication

*This year's budget documents are dedicated to the
Memory of William V. Golas, Jr.
Sr. Budget Analyst 1987 - 2013*

The image on the cover of this year's budget document is a Winter Scene of the State House from Artist John Pitocco of Providence and is reproduced by permission of the artist in collaboration with the Rhode Island State Council on the Arts.

Agency

Rhode Island Emergency Management Agency

Agency Mission

The mission of the Rhode Island Emergency Management Agency (RIEMA) is to reduce the loss of life and property for both natural and man-made incidents by utilizing an all hazards approach to prevention, protection, mitigation, response, and recovery while providing leadership, assistance, and support to regional, state, and local entities.

Agency Description

RIEMA is responsible for establishing, sustaining and coordinating the resources of the Federal, State, local governments, non-governmental organizations and the private sector to effectively meet the challenges faced during a natural and/or man-made incident. This will be accomplished through the Governor's authority under R.I.G.L 30-15, who will work with a management team for overseeing the four functional (program) areas within the agency which are Finance/Grants, Preparedness, Planning, and Technical Services Sections. The organization's primary goal is to create and oversee a statewide system with an all hazards approach to emergency management. RIEMA is also responsible to strengthen the thirty-one (31) core capabilities outlined by the National Preparedness Goal as established by Presidential Policy Directive 8 to reduce loss of life and property within the State of Rhode Island during natural and/or man-made incidents.

The Rhode Island Emergency Management Agency and the State Emergency Operation Center (SEOC) will provide a central location from which all state government at any level can provide interagency coordination and executive decision-making in support of any regional incident or local response. This will be done by: Information Collection and Evaluation, Executive Decision-Making, Priority Setting, Management, Coordination & Tracking of Resources, and Interoperable Communication Facilitation to support any overall response efforts.

The Rhode Island Emergency Management Agency's State Emergency Operation Center (SEOC) will operate under the guidance of the National Response Framework (NRF) & National Incident Management System (NIMS). This will be done by using the Incident Command System (ICS) & predetermined Emergency Support Functions (ESF). The SEOC can assist the Local Emergency Operation Center or Local Incident Commander by: Creating a Common Operating Picture from Information Collection; Evaluation of Information for Executive Policy Decision-Making; Create Static Planning & Priority Setting; Manage, Coordinate, & Track Resources; Provide Interoperable Communications Support, and Manage Public Information, Administrative & Financial Support.

Statutory History

R.I.G.L 30-15 created the Emergency Management function. In 1973, the Rhode Island Defense Civil Preparedness Agency was created by R.I.G.L. 30-15, to replace the former Civil Defense Agency. Executive Order No. 83-5 changed the official name to the Rhode Island Emergency Management Agency. The Governor's FY 2015 Budget Recommendation includes legislation to establish the RIEMA as a stand-alone agency.

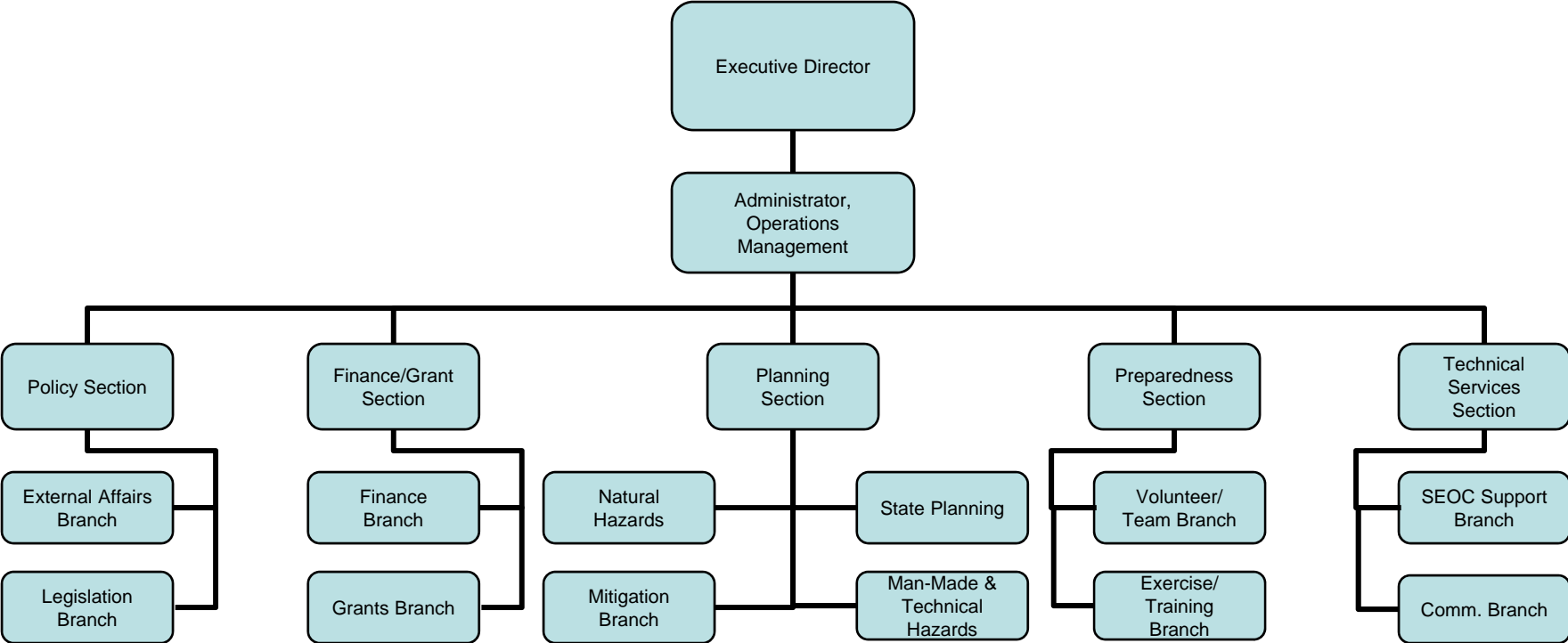
The Budget

Rhode Island Emergency Management Agency Central Management

	2012 Audited	2013 Audited	2014 Enacted	2014 Revised	2015 Recommend
Expenditures By Subprogram					
Operations	-	-	-	-	20,622,227
Total Expenditures	-	-	-	-	\$20,622,227
Expenditures By Object					
Personnel	-	-	-	-	4,427,376
Operating Supplies and Expenses	-	-	-	-	1,796,093
Assistance and Grants	-	-	-	-	13,950,446
Subtotal: Operating Expenditures	-	-	-	-	20,173,915
Capital Purchases and Equipment	-	-	-	-	448,312
Total Expenditures	-	-	-	-	\$20,622,227
Expenditures By Funds					
General Revenue	-	-	-	-	1,959,858
Federal Funds	-	-	-	-	18,273,640
Restricted Receipts	-	-	-	-	221,729
Operating Transfers from Other Funds	-	-	-	-	167,000
Total Expenditures	-	-	-	-	\$20,622,227

The Agency

State of Rhode Island Emergency Management Agency



Personnel

Rhode Island Emergency Management Agency Central Management

	Grade	FY 2014		FY 2015	
		FTE	Cost	FTE	Cost
Classified					
ADMINISTRATOR, FINANCIAL MANAGEMENT	00137A	-	-	1.0	75,577
ADMINISTRATOR, OPERATIONS MANAGEMENT	00141A	-	-	1.0	97,187
ASSISTANT ADMINISTRATOR, FINANCIAL	00134A	-	-	1.0	88,546
ASSISTANT CHIEF OF PLANNING	00137A	-	-	4.0	313,277
ASSISTANT COORDINATOR CIVIL PROTECTION	03224A	-	-	2.0	87,537
COORDINATOR CIVIL PROTECTION RELOCATION	03226A	-	-	11.0	565,153
EMERGENCY MANAGEMENT SURVIVABLE CRISIS	03225A	-	-	1.0	50,261
MANAGEMENT ASSISTANCE SUPERVISOR	03231A	-	-	2.0	134,812
PROGRAMMING SERVICES OFFICER	03231A	-	-	2.0	142,733
SENIOR PLANNER	03226A	-	-	1.0	50,627
SENIOR TELECOMMUNICATIONS AND WARNING	03226A	-	-	1.0	52,254
SUPERVISOR OF ADMINISTRATIVE & TECHNICAL	03229A	-	-	1.0	54,429
TECHNICAL SUPPORT SPECIALIST III	03235A	-	-	1.0	83,760
Subtotal		-	-	29.0	\$1,796,153
Unclassified					
ADMINISTRATIVE ASSISTANT	04715A	-	-	1.0	35,521
EXECUTIVE DIRECTOR	00847A	-	-	1.0	137,950
SPECIAL PROJECTS COORDINATOR	05127A	-	-	1.0	84,399
Subtotal		-	-	3.0	\$257,870
Overtime		-	-	-	50,000
Turnover		-	-	-	(25,000)
Subtotal		-	-	-	\$25,000
Total Salaries		-	-	32.0	\$2,079,023
Benefits					
Payroll Accrual		-	-	-	13,324
FICA		-	-	-	159,190
Retiree Health		-	-	-	135,554
Health Benefits		-	-	-	415,881
Retirement		-	-	-	497,887
Subtotal		-	-	-	\$1,221,836
Total Salaries and Benefits		-	-	32.0	\$3,300,859
Cost Per FTE Position (Excluding Temporary and Seasonal)		-	-	-	\$103,098
Statewide Benefit Assessment		-	-	-	\$87,298
Payroll Costs		-	-	32.0	\$3,388,157

Personnel

Rhode Island Emergency Management Agency Central Management

	Grade	FY 2014		FY 2015	
		FTE	Cost	FTE	Cost
Purchased Services					
Clerical and Temporary Services			-		1,030,639
Other Contracts			-		750
Training and Educational Services			-		7,830
Subtotal			-		\$1,039,219
Total Personnel		-	-	32.0	\$4,427,376
Distribution By Source Of Funds					
General Revenue		-	-	6.7	\$788,592
Federal Funds		-	-	24.2	\$3,445,953
Restricted Receipts		-	-	1.1	\$192,831
Total All Funds		-	-	32.0	\$4,427,376

Performance Measures

Rhode Island Emergency Management Agency Central Management

Rhode Island Statewide Communication Network (RISCoN)

RIEMA is responsible for the operation and maintenance of RISCoN, the state's 800 MHz interoperable radio network. The figures below represent the number of RISCoN sites receiving a maintenance assessment. [Note: RIEMA developed new performance measures for FY 2015; historical data are not available.]

	2011	2012	2013	2014	2015
Target	--	--	--	--	29
Actual	--	--	--	--	--

Performance for this measure is reported by state fiscal year and is current as of 9/30/2013.

National Incident Management System (NIMS) - Intermediate Training

The Incident Command System (ICS) is a standardized incident management approach that establishes a common organizational structure, enables coordinated response among jurisdictions and agencies, and establishes common processes for managing resources. RIEMA is responsible for providing training for the first responder community and other key stakeholders to be NIMS-compliant. The figures below represent class attendance at intermediary ICS-300 training, designed for first-line supervisors.

	2011	2012	2013	2014	2015
Target	--	--	--	--	300
Actual	--	--	--	--	--

Performance for this measure is reported by state fiscal year and is current as of 9/30/2013.

State Emergency Operations Drills

RIEMA is responsible for the State Emergency Operations Center (SEOC), which is the central location from which state government can provide interagency coordination. SEOC is also the location from which the Governor's State Emergency Operations Plan is executed during a man-made and/or natural incident. The figures below represent the number of non-notice incident activation and/or notification drills conducted.

	2011	2012	2013	2014	2015
Target	--	--	--	--	5
Actual	--	--	--	--	--

Performance for this measure is reported by state fiscal year and is current as of 9/30/2013.

Federal Grants Compliance

RIEMA is responsible for federal grants to state and municipal government agencies and departments. The figures below represent the number of onsite compliance visits conducted with grant recipients.

	2011	2012	2013	2014	2015
Target	--	--	--	--	24
Actual	--	--	--	--	--

Performance for this measure is reported by state fiscal year and is current as of 9/30/2013.